

T

E C H

I

P

S

1969-
1970



THE ASSOCIATION OF WOMEN STUDENTS,
WOMEN'S RESIDENCE ASSOCIATION,
AND COLLEGE PANHELLENIC ASSOCIATION

of

TEXAS TECHNOLOGICAL COLLEGE

present

TECH TIPS

A Handbook for Women Students

1969 - 1970



Editor Nena Huffaker
Cover Design Rosemary Seale

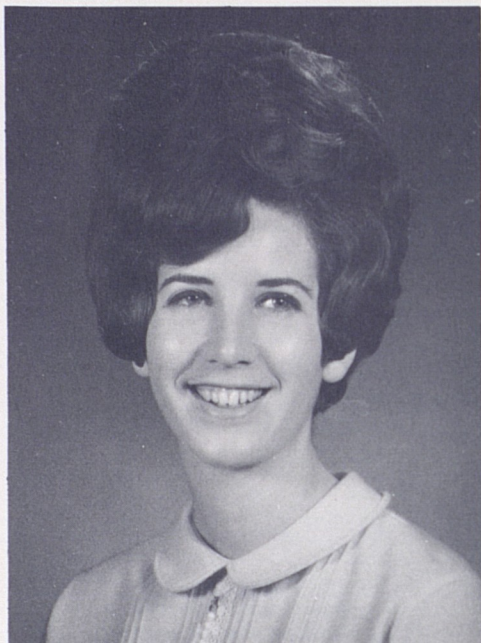
CHAIRMEN

Residence Halls Judith Jenkins
Panhellenic Patricia Neal

Printed By
THE TEXAS TECH PRESS
Texas Technological College
Lubbock

Contents

DIRECTOR OF STUDENT ACTIVITIES	4
STUDENT LIFE ADVISOR FOR WOMEN	5
ASSOCIATION OF WOMEN STUDENTS	6
Women's Creed	7
AWS Executive Council	8
AWS and You	9
President's Hostesses	12
American Home Economics Association	13
Angel Flight	14
CorpDettes	15
Campus Girl Scouts of Texas Tech	16
Major-Minor Club	17
Town Girls Club	18
Women's Service Organization	19
STUDENT ASSOCIATION	20
WOMEN'S RESIDENCE HALLS	22
Women's Residence Council	23
A Guide to Residence Hall Living	25
Chitwood Hall	33
Clement Hall	34
Coleman Hall	35
Doak Hall	36
Gates Hall	37
Horn Hall	38
Hulen Hall	39
Knapp Hall	40
Stangel Hall	41
Wall Hall	42
Weeks Hall	43
HONORARIES	44
Alpha Lambda Delta	45
Junior Council	45
Mortar Board	46
Delta Psi Kappa	46
Mu Phi Epsilon	47
Phi Gamma Nu	47
Phi Upsilon Omicron	48
Tau Beta Sigma	48
Theta Sigma Phi	49
COLLEGE PANHELLENIC	50
The Panhellenic Creed	51
An Introduction to College Panhellenic	52
What is Panhellenic?	53
Rush Registration Instruction	60
Alpha Chi Omega	62
Alpha Delta Pi	63
Alpha Phi	64
Chi Omega	65
Delta Delta Delta	66
Delta Gamma	67
Gamma Phi Beta	68
Kappa Alpha Theta	69
Kappa Kappa Gamma	70
Phi Mu	71
Pi Beta Phi	72
Sigma Kappa	73
Zeta Tau Alpha	74
APPENDIX	75
Constitution of AWS	75
Constitution of the Residence Hall Association and the Women's Residence Council ..	76
Landmarks and Traditions of Texas Tech	79
School Songs	80



Hello! and Welcome to Texas Tech! You are about to begin what can be the most wonderful years of your life, and we are proud that you have chosen Texas Tech in which to do so. A college education is one of the most valuable assets you will possess. Texas Tech offers a variety of activities and organizations, including thirteen fine national sororities, in which one may fully develop her leadership abilities and interests. The friendships you make during the next four years will continue long after graduation.

"If a thing is not worth working for, chances are it isn't worth having. If a thing isn't worth asking for, it isn't worth taking. And if it is given to you, it isn't worth keeping." Start now—make the most of your college experience.

Sincerely,
Carola Joan Mobberley
Director of Student Activities
Panhellenic Advisor
AWS Sponsor



I am delighted on the part of Texas Tech and AWS to have this opportunity to welcome freshman, transfer, and returning Texas Techs to our College. It is my sincere hope that this year, 1969-1970, will be successful and happy.

Your residence hall counselor and the Student Life staff are here to help you in any phase of your college career. Remember what you put into your college career determines what you will profit from it.

Sincerely,
Mrs. Ruth Causey
Student Life Advisor for Women
AWS Sponsor

AWS



Women's Creed

I believe in the women of this college, in their ideals and sincerity of purpose.

I believe in my ability to use wisely the privileges of self government and will strive to accept its responsibilities.

I believe that my purpose in college is to learn to think. I will present my best efforts in seeking what is true and will regard the classroom as a place for unquestionable honesty.

I believe in myself. Recognizing both my strengths and weaknesses, I will strive to follow the Rule of Life — that of charity toward others and service to all.

AWS Executive Council



Top row, left to right: Betsy Bond, treasurer; Elizabeth Cavin, secretary; Marian Schmidt, 2nd vice president; Bottom row, left to right: Bobbie Specht, IAWS contact; Beverly Johnson, president; Anita Bell, 3rd vice president.

Dear Miss Techsan,

I want to welcome you personally to Texas Tech on behalf of the Association of Women Students. You are most fortunate in that you have the privilege of attending one of the outstanding colleges in the United States. You will find dedicated teachers, trained counselors, cooperative administration, and friendly students who are ready and anxious at all times to guide and assist you in every way possible.

As a member of the 1969-70 student body, you will be a part of Tech's dynamic growth, share its spirit and enthusiasm, and take part in its many activities.

Each year of your college experience will provide you with countless wonderful experiences and create many lasting friendships. You will increase your knowledge and your desire for knowledge. AWS was formed to serve you as you advance in these experiences. We hope that we may truly be of service to you and that this year will be one of your happiest.

Beverly Johnson
President, AWS

AWS and You . . .

College means a number of things to you. It means work and recreation plus new friendships and new ideas. You are in for an enriching experience. And you'll want to take advantage of all sides of college—intellectual, social, and spiritual.

Many individuals and organizations are eager to help you, especially AWS (Association of Women Students), WRA (Women's Residence Association), and Panhellenic Council.

STUDY HINTS

The college campus offers so many avenues of activity that it is easy to lose sight of our primary objectives and become completely "wrapped up" in extra-curricular activities. So, remember, study comes first.

The student has few regulations outside of class hours and must learn to budget her own time. A daily schedule allotting time for study and relaxation will be of valuable service, and you will gain real satisfaction knowing that you have given the necessary time and effort to your studies.

A person with the ability to concentrate is well on the road to good study habits. Tips in developing this ability are to divide your study hours into short concentrated periods, to keep your mind on your work, to read rapidly, to allot each piece of work a certain time, and to work in surroundings conducive to concentration.

If you and your roommate study together in your room, it is wise to slip a "Do Not Disturb" sign over the door knob. As a first semester freshman, 9:00 P.M. hours will help you to give the proper time to studies.

By practicing good study habits and reviewing thoroughly before exams, you

send home the grade reports that will make both you and your parents proud. So study hard, then relax.

College is filled with things to do and people to meet. Dating, campus organizations, departmental clubs, dorm life, cokes in the Tech Union—all these are avenues of relaxation.

A KEY TO CLOTHES

Now, what to wear—and when? Remember that simplicity is the key word to the Techsan's taste in clothing. For your convenience and easy access, note the Techsan Clothing Chart.

Other incidentals are brunch coat or short house coat, slacks, bedroom slippers, cottons for fall and spring, and a heavy coat for winter. The weather in West Texas is windy and there is usually snow and rain, so bring overshoes and headscarves.

THE GENTLE ART

Equally important to the Tech coed as being well-groomed and well-dressed are manners.

We have learned that one of the best ways to receive a lot of introductions is to give a lot of them. In order to introduce and to meet people with poise, you will need to practice the techniques. If you want to brush up on "how and when," here are some tips that may prove beneficial.

Always mention the woman's name first if a man and a woman are being introduced. Men always rise for introductions. Women rise only when being introduced to an older woman, or when they wish to show special respect to a

A TECHSAN'S CLOTHING CHART

Event	Dress	Shoes
Classes	Skirts & sweaters, blouses; wool or cotton dresses	Loafers, flats
Town	Dress, suit, or sweater & skirt	Flats or low heels
Dinner Date	Date dress	Heels
Informal Dances	Dress or sweater & skirt	Type optional
Formal Dances	Long or short length formal, or after-five dress	Heels appropriate for dress
Banquets	Formal or dressy dress; depends on invitation	Heels
Picnics	Shorts; slacks, jeans, skirts & sweaters	Casual shoes or loafers
Spectator Sports	Tailored clothes or school clothes	Heels or loafers depending on dress
Cultural Events	Suit or date dress	Heels
Teas & Receptions	Dressy dress or suit	Heels
Church Services	Best <u>daytime</u> dress or suit	Heels

distinguished person. A woman may shake hands with a man, but must remember to extend her hand first.

When introducing a large group, mention names of men and women in the order they are seated or standing. In acknowledging an introduction, it is courteous to repeat the name and simply to say "Hello" or "How do you do." A smile can express your friendliness better than words.

Friendliness on our campus extends to the faculty and older people. You cannot underestimate the value of showing courtesy and kindness to other people.

Remember, as you're packing for Texas Tech, put in a smile and a friendly spirit, and take them out first when you arrive.

THE COMMON GROUND

One more phase of college deserves special mention — spiritual growth. Many religious groups, affiliated with

Lubbock churches and located off-campus, offer worship, study, and fellowship. These are listed in the General Catalog under mutual interest organizations. You are invited to attend the group of your choice.

This phase of your growth is best expressed in the AWS Women's Creed—"that of charity toward others and service to all."

AWS IS FOR YOU

When you enroll at Texas Tech, there is one organization of which you as a woman student automatically become a member. This is the Association of Women Students — known more simply as AWS.

The purpose of AWS is to help you and other Tech coeds get the greatest benefits from college life by promoting unity and fellowship among women students and by providing opportunities for leadership in worthwhile activities on campus. AWS acts as a coordinating

body of all women's organizations in setting the standards for living and working together on campus.

IAWS

Tech's AWS is a member of a large national association — the Intercollegiate Association of Women Students. Its membership is composed of women's governing units in over 100 colleges and universities from coast to coast. IAWS was the first to establish a national association of student governments. The foundation for this organization was laid in 1913, and Tech was the first college in Texas to become a member of IAWS.

The purposes of IAWS are to foster the exchange of ideas and information on subjects of mutual interest to the member schools; to encourage a growing awareness of the responsibilities of women students in local, national, and international affairs; and to work for the improvement of women's governing groups.

AWS COUNCIL

Tech's AWS is governed by the AWS General Council. This Council is composed of the AWS officers, one representative from each women's organization, and a representative from the freshman class. The Executive Council, elected by the women students, is comprised of seven officers: president, first vice president, second vice president, third vice president, secretary, treasurer, and IAWS contact. To understand exactly how AWS works, you are encouraged to attend any regularly scheduled Council meeting.

PLANNED ESPECIALLY FOR YOU

"Never a dull moment . . ." and so it is with AWS. Its ever-expanding activity program includes:

BIG SISTER-LITTLE SISTER PROGRAM — You will be adopted as a little sister long before you arrive on campus. Your big sister should write to you during the summer and be here in the fall to help you get acquainted with campus life and to give you the benefits of her college experience.

HOWDY PARTY — This event is scheduled as a "get-acquainted" period during the first week of classes. All the women leaders on campus will be at this party to welcome you and to tell you about extracurricular activities and women's organizations at Tech.

DAD'S DAY — During the fall Dads are honored by a full day of activities including the football game and a welcoming coffee. AWS Dad's Day Committee plans the program.

PENNY - A - MINUTE NIGHT — Here's your chance to stay out one hour past closing hours—at the rate of a penny a minute. AWS usually sponsors two such nights each year.

WOMEN'S DAY—This is a special day set aside each spring to recognize women on our campus. Activities include a reception for all women students and faculty members in the Office of the Director of Student Activities that afternoon, and the Women's Day Banquet that night. An outstanding woman is invited to be the speaker at the banquet.

Recognitions at the banquet include presentation of Tech's Outstanding Woman of the Year and Faculty Woman of the Year, installation of AWS officers for the coming year, and scholarship recognition.



Left to right: Kathy Griffis, chairman; Loretta Albright, secretary.

President's Hostesses

Serving as Texas Tech's official hostesses, the 40 members of President's Hostesses perform many varied duties. Among their responsibilities are welcoming visitors to campus, hostessing in the Press Box during home football games, and assisting with various administrative functions. Hostesses also assist with the Red Raider Club Banquet and the Century Club Banquet.

These upperclasswomen are chosen each year by the AWS Executive Council and the chairman of President's Hostesses.

Following their selection, the new members attend an orientation tea followed by a comprehensive tour of the Tech campus.

American Home Economics Association

All students of Home Economics are invited to become members in the American Home Economics Association. Each member is required to pay \$3.00 dues each year to the Tech chapter and has the option of paying an additional \$4.00 dues for national affiliation. Meetings are held on the third Thursday night of each month.

The goal of our programs is to assist and to encourage all members of the home economics profession to develop and to utilize their full potential in serving all segments of our society. Regardless of your major area of study in home economics, AHEA will help you develop into an individual who relates to campus and community. Through interest group projects, you may sponsor a fashion fair, present programs in Lubbock high schools, or work with FHA'ers. Affiliation on the state and national level will foster your development of professional attitudes.

Officers are Marilyn O'Dowd, president; Mary Staudt, vice president; Gail Carter, secretary; Diane Marshall, treasurer; and Freda Walker, AWS representative.



Left to right: Marilyn O'Dowd, president; Freda Walker, AWS representative; Mary Staudt, vice president.



Left to right: Marilyn Davies, commander; Laura Murray, AWS representative; Karen Johnson, executive officer; Shay Slack, pledge trainer.

Angel Flight

The Texas Tech Angel Flight is a girls' drill team and social organization sponsored by the Air Force ROTC Arnold Air Society.

Angel Flight is a national organization designed to create and to promote interest in the Air Force program, on and off campus. The Tech Angels participate in many campus activities such as the annual Homecoming Parade, Air Force ROTC Field Day, registration, Air Force commissioning services, basketball half-times, and various other athletic and social events. Off-campus activities include hostessing for several functions such as pilot graduation at Reese Air Force Base, the Miss Lubbock pageant, and various speakers. As a drill team, the flight marches in competition and in various parades. Other special activities have included trips to the Air Force Academy and to area and national conclaves.

Meetings are held on Tuesday and Thursday afternoons. Membership is limited to 46 girls. Vacancies are filled at the fall and spring tryouts. The girls are selected according to ability, poise, character, and appearance. Angels are required to have a 2.0 grade average each semester.

CorpsDettes

The Army CorpsDettes of Texas Tech is a girls' drill team and social organization sponsored by Scabbard and Blade and the Army ROTC.

CorpsDettes is designed to promote activities and interest in the Army ROTC program at Tech and to increase the educational experience of the members through off-campus events. The girls participate in many campus activities such as marching in the Homecoming Parade and the Rodeo Parade, preparing for the Military Ball, and hostessing various social and athletic events. Off-campus activities include participation in the St. Patrick's Day Parade in Shamrock, Texas; marching in the Fiesta Parade in San Antonio; tours of Reese Air Force Base; and various drill competitions.

The traditional Army green uniform worn by the members consists of a straight skirt and semi-fitted jacket complemented by a gold ascot and braid. Uniforms are worn every Thursday and for special events.

Members, not to exceed 45, are selected at the beginning of each semester on the basis of marching ability, poise, character, and appearance. A 2.5 grade-point average is required each semester. Meetings are held on Tuesday and Thursday afternoons.



Left to right: Kathy Griffis, commander; Buffy Moser, executive officer; Dinah Doty, drill commander; Julie Cates, AWS representative.



Left to right: Vicki Allen, president; Anita Bell, vice president; Marcia Mounts, secretary-treasurer; Janet Wossum, AWS representative.

Campus Girl Scouts of Texas Tech

Campus Girl Scouts of Texas Tech is a service organization sponsored by the Caprock Girl Scout Council. It was organized for young women with a Scouting background, although not required, who wish to continue their interest in Scouting by giving service to the local Girl Scout Council and to Texas Tech.

Projects in which the group has participated include acting as leaders or special consultants to Girl Scout troops; conducting special activities of the Council such as Playdays and Fairs; giving service to the Council Office; enjoying cookout and overnites, a trip to Palo Duro Canyon, and the companionship of those who share your interests. Our main campus project is helping at the West Texas Museum.

The only requirement in being a member of Campus Girl Scouts of Texas Tech is to be a registered member of the Girl Scouts of the U.S.A. There will be one regular meeting each month.

Major-Minor Club

Welcome to Texas Tech and to the Women's Physical Education Department.

The Major-Minor Club is a professional and social organization for women students majoring, minoring, and specializing in physical education.

The purposes of the club are to develop a professional attitude toward health, physical education, recreation, and related fields; to develop character traits of its members that will promote professional growth; to develop a better and closer relationship among its members; to promote the development of the profession by providing leadership and service in the club, College, and community.

Officers are Carolyn Childers, president; Kay Shelton, vice president; Sue Crow, secretary; Judy Foreman, AWS representative; and Sandra Foster, treasurer.



Left to right: Kay Shelton, vice president; Carolyn Childers, president; Judy Foreman, AWS representative.



Left to right: Linda Usry, vice president; Nedree Riggs, AWS representative; Claudia Hale, president.

Town Girls Club

Town Girls Club was organized in 1953 and designed for a very special group of girls. These are the girls who live off campus and whose contact with its activities is often limited.

The club offers friendships, various projects and parties, information on current campus events, and participation in campus activities. Town Girls holds a get-acquainted party for new members at the beginning of each year, participates in the Big Sister-Little Sister program, plans parties for the club members, gives annually an Easter egg hunt for different groups of Lubbock children, and has a Christmas project. Town Girls annually sings in the Carol of Lights and enters a float in the Homecoming Parade. This past year we closed the semester with a hay ride and weenie roast at Buffalo Lakes.

Town Girls Club is an important part of Texas Tech; if you plan to live off campus, it can be an important part of your college life. Our club is a growing participant of Texas Tech. Won't you join us and enjoy all the activities and friendships which are a part of Town Girls?

Women's Service Organization

Since its origin as a committee of the Association of Women Students in 1959, Women's Service Organization has increased in size from the original seventeen members to almost a hundred at the present time. The women of the organization contribute over 1500 service hours to the campus and community each semester.

Women's Service Organization gives the woman student an opportunity to be of service to the College while identifying herself with a respected group. The maroon and white uniforms of WSO are a familiar sight on campus as the members proudly work on numerous projects including homecoming activities, campus elections, annual bike race, Mile of Pennies for the World University Service, ushering, United Fund, Girlstown, reading for blind students, and work with the annual Carol of Lights.

The principles of friendship, service, and equality are stressed during the period of pledgship as well as among the active members of WSO. During the ten-week pledgship, pledges become acquainted with activities through working on joint projects and signature appointments. The requirements for initiation are few: a 2.0 grade average; ten service hours; and, most important, a desire to serve.



Left to right: Janet Wossum, treasurer; Di Doshier, pledge trainer; Linda Morrison, vice president; Ruth Rucker, president.

Student Association



Karen Johnson, secretary of Student Association

Student Association

The leadership of student government of our College is vested in the executive officers of the Student Association: president, vice president, secretary, and business manager. The president serves in an executive role, while the vice president and the secretary are involved with the procedures of the Senate. The business manager is concerned with the finances of student government.

Our Senate is modeled after the national Senate. The students elect senators from the academic schools, the number of which is apportioned according to the enrollment of each school. Senators may introduce legislation in the form of bills or resolutions. After passing the Senate, the bill is sent to the president, who approves or disapproves the legislation. The vice president presides over the Senate. As secretary, I take the minutes of meetings, prepare all legislation that is introduced, and check attendance of the senators. The secretary serves as the only woman representative on the executive board of the Student Association.

After a bill or resolution has been passed by the Senate and the president, the legislation still has to be presented to the College administration. It is our responsibility to work closely with the administrators so that they might know the opinions of the students. As secretary, I am looking forward to the opportunity of working with Dr. Murray and his administration for a greater College.

Women's Residence Halls



Left to right: Kathy Coleman, judiciary chairman; Lucy Casbeer, vice president; Amy Trail, secretary-treasurer; Judy Jenkins, president.

Women's Residence Council

The Women's Residence Council, composed of the presidents and vice presidents of each hall, is the policy-making organization for the women's residence halls and the Women's Residence Hall Association. This association consists of all residents of the Texas Tech women's residence halls. Upon moving into a residence hall, the woman resident automatically becomes a member of this organization. The officers of the Women's Residence Council (WRC) are then elected by all women living in residence halls. WRC members, acting as official representatives of their halls, discuss questions of student government and regulations which arise in the residence halls.

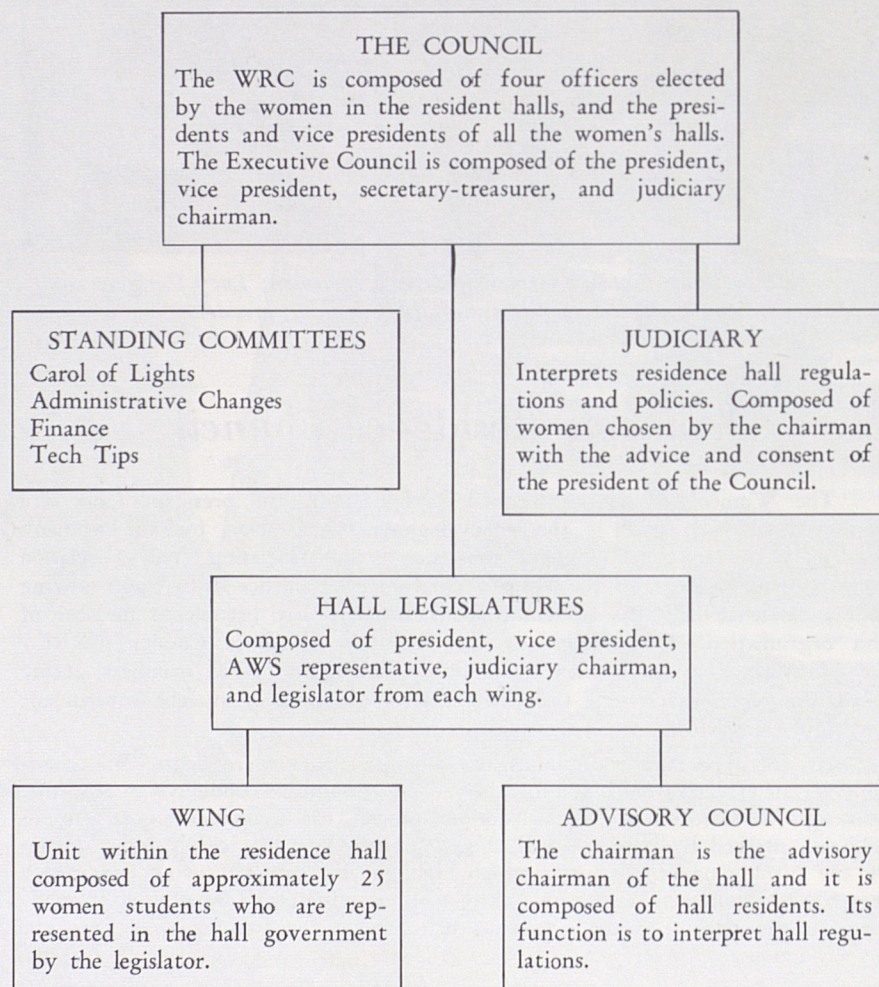
As an important communications link for women residents, WRC encourages an effective cultural program and an atmosphere conducive to academic learning. The Carol of Lights, a major fall project, has become an annual campus tradition marked by residence hall choirs singing Christmas carols and climaxed by the turning on of the lights which highlight the campus during the holiday season. Other projects include a Penny-a-Minute night and scholarship trophies given in the spring to the upperclass hall and to the freshman hall with the highest grade-point average.

One of the more recent Women's Residence Council's projects was the creation of the MARSHALL L. PENNINGTON LOAN FUND established

in 1967. This loan fund, which establishes a short-term loan for second-semester freshmen and upperclass women in the residence halls, was increased by the 1968 WRC.

This coming year, WRC is excitedly anticipating the National Association of College and University Residence Halls Convention to be held in March on the Tech campus. This project of hosting the convention, a cooperative one between Men's Residence Council and WRC, is the first of its kind to be undertaken by the two Councils at Tech.

WOMEN'S RESIDENCE COUNCIL ORGANIZATIONAL CHART



A Guide to Residence Hall Living . . .

BE IN THE KNOW

In planning to move into a Tech residence hall, the student should find the following information to be quite helpful. We know that she will enjoy the many opportunities of residence hall life.

First of all, the resident will be concerned about furnishing her room. If she is to be a resident of Doak Hall, Horn Hall, or Knapp Hall, she will find that each room has one desk (with two study places), two chairs, one chest of drawers, two beds, and two closets. If she is to be a resident of Weeks Hall, Wall Hall, Gates Hall, Hulen Hall, Clement Hall, Knapp Hall, Stangel Hall, Chitwood Hall, or Coleman Hall, she will find that each room has two desks, two study lamps, two chairs, two chests of drawers, two beds, and two closets. (The difference in the number of desks and chests of drawers is that, in these last halls mentioned, all the furniture is built in.)

Most residents wait until their arrival at Tech to choose curtains and bedspreads, for then they know the color, usually light pastels, and location of their rooms. However, if the student plans to bring curtains from home, she will need to know the dimensions of the windows.

In Doak Hall, Horn Hall, Knapp Hall, and Weeks Hall:

- (1) Each room has two windows.
- (2) Each window will require a separate set of curtains.
- (3) The measurements of each window are as follows:

Hall	Width	Length
Doak	43 ³ / ₄ x	69 inches
Horn	40 x	66 inches
Knapp	40 x	66 inches
Weeks	34 ¹ / ₂ x	68 ¹ / ₂ inches

In Gates Hall, Wall Hall, Hulen Hall, Clement Hall, and Stangel Hall:

- (1) Each room has two windows.
- (2) These windows are not separated by a partition and therefore will require only one set of curtains. (These curtains will need to be wide enough to cover both windows.)
- (3) The total measurements of the two windows are as follows:

Width	Length
72 ³ / ₈ x	54 ³ / ₈ inches

In Chitwood Hall and Coleman Hall:

- (1) Rules No. 1 and No. 2 for Gates Hall, etc., apply.
- (2) Total measurements of the typical two windows are as follows: (Exceptions include end and corner rooms on all floors.)

Width	Length
120 x	56 inches

Walls are made of plaster material, thus necessitating the use of curtain rods which do not require nails. Suction-cup rods may be purchased at Lubbock department stores.

Some suggested objects to bring from home include desk light, pillow, broom, mop, bulletin board, radio, record player, throw rugs, alarm clock, iron, and ironing board. If the student is living in Weeks, Wall, Gates, Hulen, Clement, Stangel, Chitwood, or Coleman Hall, she will not need the desk light, bulletin board, or ironing board, as they are built in. TV's, pets, and firearms are NOT allowed in the residence halls.

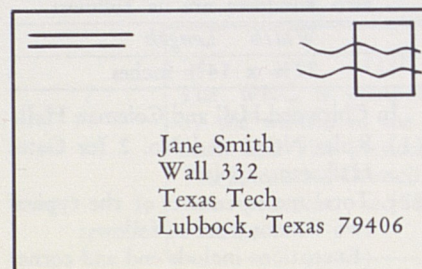
HERE'S HOW IT'S DONE

A resident's MAIL is put in a mailbox assigned to her when she registers in the residence hall. Mail boxes for the Wiggins Complex are found in the Wiggins Commons. Office assistants

sort the mail which is delivered once a day. Outgoing mail is collected at this time.

Women students will be notified by the Campus Post Office in the Administration Building if they have an insured package, registered letter, etc. Packages which are not registered are delivered to the hall.

Mail addressed to the student should include her residence hall, her box number, and zip code—79406.



The DINING HALL is open for meal service as follows:

	Mon.-Sat.	Sun.
Breakfast	6:45-7:45	8:00-8:45
Continental Breakfast	8:00-8:15	X
Lunch	11:30-1:00	12:00-1:00
Dinner	5:15-6:30	No Meal

There are LAUNDRY and drying rooms in each women's residence hall with automatic washers (25¢ per load) and dryers (10¢ per load).

All needed REPAIRS should be reported to the office. Each hall has its own "Mr. Fixit" to make repairs and fill such requests as replacement of electric light bulbs, etc.

A large STORAGE room is provided in each hall where trunks and luggage are stored. Check with the hall office for the key.

PHONE SERVICE is provided for every room. The number is on the

room contract. The charge is included in the room and board account. All prepaid long distance telephone calls and telegrams must be made from pay stations in the buildings. Only long distance calls which are collect can be made from room phones. Incoming collect calls may not be accepted by students.

RESIDENCE HALL ASSOCIATION

Every women's hall resident is automatically a member of the Residence Hall Association, which has as its purpose, as stated in the constitution, "to prepare each student for active and cooperative citizenship through participation in democratic self-government."

Texas Tech's administration believes in student government and is glad to extend the privileges of self-discipline as far as the students themselves are capable of accepting the responsibilities which this implies.

Social dues, which may range from \$1.50 to \$5.00, are paid to the Residence Hall Association as the woman resident checks into the resident hall. The social dues help pay for dorm parties and dorm projects.

RESIDENCE HALL COUNSELORS

Each residence hall has one adult supervisor, the hall counselor, who is professionally trained for her job. The counselor is responsible for administering a smoothly run hall with an atmosphere conducive to study and for counseling with the girls in the hall whenever the occasion arises. The counselor may be reached at any hour by calling the college number and asking for the desired residence hall counselor or by calling her phone number directly.

RESIDENCE HALL LEGISLATURE

The official governing body of each hall is the legislature, composed of women selected each spring from the membership of the Residence Hall Association. Officers in all halls and prospective legislators in upperclassmen halls are elected in the spring. All candidates must be approved by a screening committee of the hall before their names may be placed on the ballot. Campaigning is conducted only by word of mouth.

Legislators live in specified rooms on each wing of the hall. They represent the viewpoint of the students on that wing in legislature meetings and are responsible for the welfare of their particular wing in the hall. Legislators are the key link in communicating information to and from AWS, WRC, the administration, and the hall legislature.

Legislature and wing meetings are held every two weeks. All residents must attend wing and hall meetings. Except in emergencies, students may not sign out for overnight on wing meeting nights.

THE ADVISORY COUNCIL

Advisory Council is the agency through which the rules of the hall are interpreted. This group advises the residents on hall regulations and policies. In each hall the Advisory Council is set up under the hall's student government. The purpose is to consider cases of young women who have broken hall policies or regulation. The council has the responsibility to decide on the restrictions of a student's social privileges. Appeals and referrals from individual Advisory Councils may be made to the Judiciary Council. The advisory

chairman of the hall will act as chairman of the Advisory Council.

RESIDENCE HALL REGULATIONS

Regulations for the residence halls are made through an important communications chain. WRC, the women's elected governing body, prepares rules and regulations presented to them by the women residents themselves through wing meetings and legislature meetings. Because each woman resident has a voice in this vital communication link, it is her responsibility to abide by the rules and regulations that are in effect.

For safety and service, students are required to sign out whenever they are to be out of the hall after 7:00 P.M. Each young woman must sign in and out for herself. If an instance arises, however, in which the student has failed to sign out, she may call her counselor or her hall office to sign her out. No hall doors are to be opened before 6:30 A.M. and side doors are to remain locked after 7:00 P.M.

A. REGULAR CLOSING HOURS

Mon.-Thurs.	Friday	Saturday	Sunday
ENTERING FRESHMEN (first semester)			
9 P.M.	1 A.M.	1 A.M.	12 P.M.
10:30 P.M. (second semester)			
UPPERCLASSWOMEN			
11:30 P.M.	1 A.M.	1 A.M.	12 P.M.
SENIORS			
12 P.M.	1 A.M.	1 A.M.	12 P.M.

In order to allow more privacy for the women residents, the residence halls are closed to all visitors at 11:30 P.M., Monday-Thursday.

In order to be classified for these hours, a sophomore must have 32 hours with 64 grade points; a junior must have 64 hours with 128 grade points;

and a senior must have 96 hours with 192 grade points.

B. WEEKEND AND OVER-NIGHT SIGN OUTS

A general permission card signed by the student's parents must be on file in the residence hall office before she is permitted to sign out overnight. It is each student's responsibility to know the permissions granted her by her parents. Requests for changing the permission card should be made by the student's parents through the counselor.

Special permission is required if the specific instance is not stated on the permission card. All permissions must be addressed and sent directly to the counselor from the parents. All sign-outs must be approved through the hall office, and each girl is responsible for making certain that her sign-out process is complete. Sign-outs become the official records of the residence halls. Students must visit away from the hall in accordance with the sign-out as approved by the counselor or her representative. Each student is to go to the place to which she has signed out. Misinformation on any of these records could constitute a falsification of records.

The out-of-town sign-out sheet (white one) is to be used when women are leaving town for the day and returning to the hall before closing the same day. The sign-out sheet must be approved by the counselor or her official representative. The sign-out is checked with the student's permission card before approval is granted. When the sign-out is approved, it becomes an official record. Reese Air Force Base and Buffalo Lake are not considered out of town.

(1) WEEKEND OUTSIDE LUBBOCK

It is suggested that weekend sign-outs for outside Lubbock be completed on or by Thursday. Sign-outs must be filed by the student in the box provided for this record.

A university woman may sign out for home at any time. However, if it is necessary for her to leave her residence hall before or after hours, she must obtain, in person, prior permission from the resident counselor. If a woman student is granted overnight permission, she is permitted to spend overnights at the following places:

- (a) Approved housing in another university or college
 - (b) Family homes of friends in or out of the city, or homes of single women friends in or out of the city
 - (c) Relatives in or out of the city
 - (d) Motels or hotels outside Lubbock
- (2) WEEKEND OR OVER-NIGHT IN LUBBOCK

Fill out the form in the hall office for Lubbock overnight and weekend sign outs before 4 P.M. of the day of departure. The sign-out must be approved by the residence hall counselor or her representative and filed by the student before she leaves. Again, *women must go to their designated destination.*

(3) A student is always permitted to stay in a hotel or motel with her parents, provided one of them signs for her at the residence hall office. She may also stay with any married relatives and/or friend's parents if she has her parents' written or telephoned permission directly to the hall counselor and if the relatives or friend's parents also sign for her at the residence hall office. Any exception to the above must be discussed with the Coordinator of the Women's Residence Halls.

(4) When granted permission by the parent or guardian, the student may stay in hotels while on out-of-town trips. Any exception to the above must be discussed with the Coordinator of the Women's Residence Halls.

C. RETURN FROM VACATION

All students return to the hall from an official college holiday by 12:00 P.M. of the day preceding the day

classes are to begin. If an emergency arises and the student is delayed or the time of return is somehow changed, she should notify her counselor of her whereabouts immediately. It is suggested that a student allow two extra hours of traveling time to take care of any unforeseen difficulties.

D. SPECIAL PERMISSION

Organizations and/or individual students may request from the Women's Residence Council campus-wide permission for special events. The written request, stating the nature of the activity, must be received at least one week prior to the event by the chairman of the Women's Residence Council, Housing Office.

Women residents may attend without written request all-college programs, plays, concerts, lectures, and athletic events.

Women residents may also attend, without written request, any program sponsored by the following civic organizations:

Civic Lubbock
Lubbock Symphony Concert Association
Lubbock Theatre Centre
Lubbock Community Concerts Association

When the event lasts past the regular closing hours, the student is expected to remain until it is over. For events held on campus, she must return to the residence hall within 30 minutes after the event is over; for events held off-campus, she must return within 40 minutes. The student should sign out on the board designated Special Permission.

Late permission for any other reason should be requested from the Coordinator of Women's Residence Halls not later than 4:00 P.M. on the day of the event.

E. EMERGENCY PERMISSIONS

In an emergency or an unusual situation, the counselor may grant special permission.

F. QUIET HOURS

Quiet hours must be maintained from 7:00 P.M. until 7:00 A.M. "Reasonable"

quiet must prevail at all times. Freshman women have enforced quiet hours from 9:00 to 10:30 P.M., Monday through Thursday, during the fall semester.

G. MEN CALLERS

Men callers are not permitted to visit in women's residence halls until 10:00 A.M. However, men may come into the lobby to call for a young woman after 8:00 A.M., Monday through Saturday. On Sunday, men may visit in the lounge after 8:30 A.M.

H. SOCIAL CONDUCT

Tech women believe that good taste is consideration for others. Overt public display of affection is considered in bad taste and is not permitted in the lounge, lobby, or entrances of the residence hall. Therefore, WRC wishes to offer this definition of obvious display of affection:

While we are not trying to discourage courtship and romance, we believe that there are certain standards of acceptable behavior which should be observed. In view of this, we offer these guidelines for community living in order to promote consideration for others.

It is the responsibility of the woman student to refrain from engaging in an overt public display of mutual affection and to discourage such advances from her date.

Before such a call down may be given to a woman, it is the responsibility of the person in authority to determine whether the incident is truly an overt display of mutual affection, or the result of an unusual circumstance over which the woman has no control.

It is not considered in good taste for a Tech woman to visit an apartment of a male student.

I. DRESS

Tech women do not wear blue-jeans or bermuda shorts in the residence hall formal lounge. Casual clothes may be

worn in the informal lounges in the halls which have them. Students should dress appropriately in the dining hall.

Neat casual clothes (slacks, blue jeans, bermuda shorts, and jamaica shorts) may be worn to all meals Monday through Saturday. Cut-offs may be worn if they are hemmed and not split or laced-up the sides. Neat casual clothes may also be worn to all meals on Saturday, with the exceptions of lunch and dinner on the days when there is a home football game. On Sundays, school dresses may be worn to breakfast, but church clothes must be worn to the noon meal. Short shorts, brunch coats, and house shoes are never worn in the dining halls, and curlers must be completely covered with a headscarf or roller bonnet. Curlers are never worn in the dining halls on Sundays. The exception to the casual dress rules would be special meals announced by individual residence halls.

Failure to comply with these rules shall result in a call-down. The dress standards are to be enforced by the office personnel and the members of the residence hall legislature.

J. GUEST REGULATIONS

Students may have guests in the residence halls only on Friday and Saturday nights except by special permission given by the counselor of the residence hall; however, mothers are welcome at any time. All overnight guests must register in the hall office. There is no charge for an overnight guest of a hall resident. The penalty for not registering a weekend guest is a \$5.00 fine for each unregistered guest. This fine will be recorded as an infraction on the student's citizenship record. The penalty for not registering a week-night guest is the \$5.00 plus an advisory call-down. All fines are to be paid by the hostess of the unregistered guest. Guests maintain the hours of their student hostess. The hostess is responsible for the conduct

of her guests and is also assigned any late minutes and infractions her non-resident guests might accrue. Guests sign in and out of the residence hall on the regular sign-out sheet.

When girls are guests in another hall on campus, the same procedure for signing out is to be observed as for any overnight in Lubbock. Resident students, while guests in other halls, are responsible for their own late minutes and the above guest regulations.

COLLEGE REGULATIONS

(1) In a college, as in any community, it is necessary to have regulations by which its members abide and procedures by which its organizations function. The standards must be stringent and conducive to intellectual and personal development. (Code of Student Affairs and Rules and Regulations, 1968-69, page 4.)

(2) Other than noted in the exceptions below, no solicitation of students, faculty, or staff members by personal contact, by random distribution of advertising leaflets or handbills, by the use of sound trucks and equipment, or by any other means, is permitted on the campus or in the College buildings or residence halls. (Code of Student Affairs and Rules and Regulations, 1968-69, page 14.) Selling, peddling, or making an offer to sell any type of tangible or intangible item is also strictly prohibited on the campus and in College buildings and residence halls will be granted only with the approval of the Director of Residence Halls.

(3) The unauthorized possession or use on College-owned or College-controlled property of firearms and ammunition, fireworks, explosive materials, or inherently dangerous substances is prohibited. (Code of Students Affairs and Rules and Regulations, 1968-69, page 14.)

(4) The College cannot be responsible for thefts in the residence halls. For

the student's protection, rooms should be locked at all times. The student should be aware of her personal insurance coverage in regard to theft and fire.

AWS REGULATIONS

A. DRESS ON CAMPUS

Tech women do not wear blue jeans or bermuda shorts in the Tech Union, or academic buildings including the library. The exception to this rule is that casual clothes may be worn to labs with the permission of the instructor.

B. MEN'S RUSH PARTIES

(1) Young women may act only as hostesses at these events and are not to be involved in any sort of entertainment program.

(2) There is no designated number of women that may attend the party as hostess, although sorority women should be aware of the Panhellenic policy which governs their members' participation.

(3) Only groups recognized as organized and professional may attend for the purpose of entertaining in any way.

(4) No late permission will be granted for residence hall women who serve as hostesses at men's rush parties.

C. SERENADES

The fraternity desiring to serenade should contact the residence hall counselor by 12:00 noon of the day preceding the serenade in order to avoid conflicts with other serenading groups. The same procedure holds for Phi Mu Alpha. Any other organization desiring to serenade should contact the president of WRC by 12:00 noon of the day preceding the serenade to obtain approval from WRC. Fraternities have priority to serenade on Monday nights. Phi Mu Alpha has priority to serenade on Wednesday nights. The WRC shall notify the residence halls and organizations requesting permission of those permissions granted in order to avoid

possible conflicts. Serenades shall begin at 10:30 P.M. and 11:00 P.M. This schedule permits two per evening at each hall, Monday through Thursday, and allows ample time for women to return to their respective halls by 11:30 P.M., closing time. Exceptions to this rule are wing meeting nights, at which time no serenades will be held.

Lubbock women may be serenaded at one of the women's halls not already reserved by a hall resident.

After a request for a serenade of a sorority woman has been scheduled by the hall counselor, the sorority being serenaded must take an alphabetical list of the freshman students in the sorority to attend the serenade from each freshman hall to that hall office. This list should be in the residence hall office by 8:00 P.M. of the night of the serenade. Only residents whose names are on these lists may go to the serenade.

D. SORORITY SLUMBER PARTIES

Slumber parties may be held on Friday or Saturday evening. It shall be to the discretion of each sorority as to the number of slumber parties they have each semester. The following procedure should be consulted in scheduling the slumber party:

(1) Schedule the slumber party on the social calendar with the proper social activities card, to be obtained in the Office of the Director of Student Activities, Rm. 171, Administration Building.

(2) Turn in to the Office of the Director of Student Activities the following:

- (a) Social calendar activities card, signed by the faculty sponsor.
- (b) Enough master lists, containing the names alphabetically of those attending the slumber party. Each residence hall in which a member resides will have a copy, with additional

copies for the Office of Student Activities, the Housing Office, and the sorority records. (i.e., if members live in eight dorms, then eleven copies must be submitted for approval.)

(3) These lists will be stamped for approval by the Panhellenic Advisor; it is then the responsibility of the sorority to take the copies to the Housing Office by 5:00 P.M. on the Wednesday preceding the slumber party on Friday or Saturday evening. The Housing Office will distribute the lists to the respective residence halls.

(4) Information which MUST be included on EACH list:

Organization: Gamma Zeta Pi

Date: Friday, January 39, 2001

Time: 8:00 P.M. Friday-10:00 A.M.

Saturday

Place: Gamma Zeta Pi Lodge, 1002
Lodge Road

Sponsor: Mrs. Jane Jinx

Residence Halls:

Chitwood: Mary Ann Nay

Cindy Sun

Wall: Sara Grim

Hazel Happy

Susie Que

Near the bottom of each copy, include a space for the signature of the Panhellenic Advisor.

Sororities will probably find that typing this information on a ditto and making enough copies on a duplicator will expedite the procedure.

(5) If the information is not in the resident halls, the residents will not be able to sign out for the slumber party.

Other details of AWS, WRC, and resident hall procedures are printed in the residence hall manual *Here's How*, the AWS Constitution (found in the Appendix of this handbook), the WRA Constitution (found in the Appendix of this handbook), and the upperclassmen and freshmen hall constitutions.

Chitwood Hall

Chitwood is tops! Come be a Chitwood girl, and you will enjoy all the conveniences of living in the newest women's residence hall.

Located on Flint Avenue, Chitwood will begin its third year on Tech campus as a co-educational residence hall for upperclasswomen. Chitwood is connected with Weymouth, the newest men's hall. On the first floor, Chitwood and Weymouth share a snack bar with adjacent concession room and a recreation room with a check-out room for game equipment.

This beautiful, modern hall has many extra facilities for the upperclasswoman. For your leisure and relaxation, there is an informal lounge with its unique color scheme on each floor. Along with each of these informal

lounges, you will enjoy the use of a typing room and a storage room for luggage. In the basement there is a private room for TV watching and a study room. Other modern conveniences include postal service, kitchenette, year-around air conditioning, telephones in each room, elevators, and a private sundeck on the roof.

Chitwood is already off to a great start. This past year Chitwood shared with Weymouth an award for Homecoming decoration and served as hostess for the Carol of Lights Dinner. Won't you join us and make this second year just as great?

Chitwood is still new and is open to ideas and suggestions from its residents. Come join us and let's make this year the best one yet!



Left to right: Kathryn Ann Baker, president; Judy Allred, AWS representative; Evelyn Nesrsta, vice president.



Left to right: Mary Jane Long, AWS representative; Melinda Burnstedt, vice president; Shirley Flesher, advisory chairman; Charlie Redding, president.

Clement Hall

Come live in Clement Hall! We are located on the corner of 19th and Flint. A friendly atmosphere greets each girl who enters Clement.

We have a spacious contemporary formal lounge complete with baby grand piano. For less formal entertainment, the informal lounge may be used for playing bridge or watching color television. Other conveniences include year-round air conditioning, an enclosed sun-bathing patio, a centralized concession room, private telephones in each room, a basement TV and study room, laundry facilities, and elevators.

To provide opportunities for partici-

pation, we have all-hall parties, intramural sports, exchange dinners, a weekly devotional, serenades by fraternities, and open house for special occasions. Clement also has a scholarship banquet each semester honoring those who have excelled in their particular studies and an appreciation banquet for legislators and officers. Clement Hall girls are always quite active in all aspects of campus activities, a tradition which has contributed to Clement's honor list and trophies.

This year promises to be as successful as the last. Come join us and make our fifth year as exciting as the others.

Coleman Hall

Do you want the convenience of on-campus housing with the advantages of apartment living? Then Coleman Hall is the place for you. This year, for the first time, Tech will have a special residence hall for graduate students, seniors, and women who are twenty-one years old or over. These women may live in the new high-rise hall which offers a lounge, typing room, luggage room, and ironing room on each floor. As part of the Wiggins Complex, Coleman shares with the Chitwood-Weymouth coed buildings the dining hall snack bar, and game room facilities.

Of particular interest are the special regulations for the eligible women in

Coleman. They sign a regular room and board contract but may cancel the contract at the end of the semester without forfeiture penalty. In the hall itself, daily sign-out boards will be provided for optional use only. In addition, these students have selective hours and so may enter and leave the hall at their own discretion. For the safety of the residents within the hall, a security guard will be on duty at the specified selective hours entrance. Further, overnight sign-outs will not necessitate the permission cards used by the underclasswomen.



Coleman Hall



Left to right: Rosalyn Davis, advisory chairman; Cathy Wilkie, AWS representative; Mary Pittman, vice president; Dianne Boyd, president.

Doak Hall

In a typical, old time collegiate setting at the end of a long walk and under an alcove of trees, is ivy-covered Doak Hall.

Doak is the most centrally located of all women's halls. It is just southeast of the Home Economics Building, and within walking distance of the Bookstore, Tech Union, Ad Building, Circle, and surrounding buildings. It is connected to another upperclasswomen's hall, Weeks, and shares a joint cafeteria.

The hall, one of the first buildings on campus, was named for Mary Doak, first Dean of Women at Texas Tech. Doak houses approximately 300 women

in light green rooms with wood furnishings.

Hootenannies, "happenings," stuffed animal pet shows, and holiday parties add to the friendly atmosphere of Doak. The color television and piano in the air-conditioned second floor lounge offer welcome diversion for residents and their dates.

Scholarship in Doak is encouraged through the newly redecorated, air conditioned study hall and the scholarship banquet each semester for residents with a 3.0 grade average.

We hope you'll enjoy living in Doak as much as we do.

Gates Hall

Want to be a Gates Girl? Gates will celebrate its sixth year as a freshman hall with all the excitement and tradition that Gates Girls originated. All of this tradition is just waiting for you.

In its short history, Gates has already gathered an impressive list of honors. Gates has won an award for Homecoming decoration and has served as hostess for both the Carol of Lights Banquet and the AWS Women's Day Luncheon.

Some of the Gates' traditions include a Halloween Hootenanny in which each wing enters a costume competition, an annual entry in the Homecoming decoration contest, a scholarship banquet for those with a 3.0 or over, a special freshman representative program, a Gates' door decoration contest at Christmas, and an Easter hat parade consisting of outlandish hats designed

and entered by each wing. We also have mixers with men's halls, fraternity serenades, and a choir for the Carol of Lights.

Gates is designed with a freshman in mind. For your midnight snack there is a concession room. For the sunbathing season, Gates is equipped with enclosed patios. There are also telephones in each room, laundry facilities, elevators, and a study hall at night for those who do not wish to study in their rooms. A color television adorns the informal lounge, and stereo music is piped through both the informal and formal lounges. Gates furnishes a private room in the basement for small parties and it is also equipped with a television for viewing programs required in various classes.

Gates is tops! Wouldn't you like to be a Gates Girl?



Left to right: Janice Stone, president; Sharon Michie, advisory chairman; Judy Clark, AWS representative; Shelly Shelton, vice president.



Left to right: Deborah Campbell, AWS representative; Luann Plunk, advisory chairman; Liz Ludwig, vice president; Mary McKeever, president.

Horn Hall

Friendliness, enthusiasm, and activities are always found in Horn. Fraternity serenades, followed by a succession of mixers with men's residence halls, start the year off right. Then there are homecoming decorations, all-dorm parties, intramural sports, and exchange dinners with boys' dorms.

Horn girls greet Christmas with enthusiasm. The girls decorate their doors and there is an all-dorm party where everyone sings carols and helps decorate the tree that stands in the lobby. The girls also form a choir for the Carol of Lights.

Scholarship is important to each student; there are private study rooms on two floors which are open all the time. With spring comes our scholar-

ship banquet and a picnic with the girls from Knapp. The Freshmen Representatives of Horn annually sponsor a Street Dance.

Horn offers many advantages. The informal lounge is perfect for relaxing, watching color TV, and playing cards. The formal lounge is a wonderful place for visiting and entertaining dates and friends. You may play the piano or the new stereo. It is also the place for our short weekly devotionals. Besides all this Horn offers telephones in every room, laundry facilities, a TV room, a concession room, a grassy sunbathing area, a beautiful view, and a perfect location! What more could you ask for? We can't think of a thing. Join us, won't you!

Hulen Hall

Hello! Welcome to Hulen Hall, one of the friendliest residence halls on campus. Hulen is connected with her sister dorm, Clement Hall, which offers twice the opportunity to make lasting friends.

This beautiful hall was designed for leisure as well as study. A glassed-in cafeteria on the mezzanine, above the refreshingly modern lounge, provides a place to study from seven until twelve o'clock each week night. A kitchenette provides a place for preparation of refreshments for hall parties and other social events. Other conveniences include year-round air conditioning, a sunbathing patio, a centralized concession room, telephones in each room, an informal lounge with colored television, a basement TV and study

room, laundry facilities, and elevators.

Hulen Hall greets alumnae and ex-students with a homecoming coffee and Dad's Day Open House. An all-hall Christmas party, appreciation banquet for legislators and officers, the Hulen Hall honor roll, "three pointers" banquet, and spring picnic with a band have also become traditions.

Projects in the past included piped-in music to the lounges, cafeteria, and office; subscription to a wide assortment of popular magazines that may be easily checked out; free movies shown in the cafeteria; all night study halls in the cafeteria during finals; and a scholarship plaque.

Enrich your college experience. Join in the fun, activity, and friendliness—come live in Hulen Hall.



Left to right: Ann Neely, vice president; Carolyn Riech, president; Patsy Hathaway, advisory chairman; Beth Kothmann, AWS representative.



Left to right: Cathy Crossland, advisory chairman; Diane Labus, AWS representative; Judy Wilkinson, vice president; Susan Cooper, president.

Knapp Hall

Knapp Hall extends a hearty welcome to all entering freshmen this fall. Because Knapp is one of the older dorms, its traditions and warm friendships have been well-established.

At the beginning of the year, we have an all-dorm party at which the legislators and dorm officers are introduced to the new freshmen. Soon after that, we begin having serenades, mixers with men's dorms, homecoming festivities, all-dorm parties, intramural sports, and exchange dinners. Special Christmas traditions include a candlelight service and the "Knapp Doll House" to which we contribute dolls for the "Toys for Tots" campaign.

Knapp has an informal lounge for playing cards and table tennis, or for watching television with our dates. Our formal lounge has a grand piano and

stereo for entertaining our friends. We are also proud of our study room, project room, and television rooms which are for the private use of our girls.

To promote high scholastic achievement, the cafeteria is used on week nights from 7:00 until 12:00 for studying. There is also a banquet held in the spring which honors those girls who have made a 3.0 or better!

One of the more centrally located dorms on campus, Knapp is within one block of the Tech Union, Library, Bookstore, Infirmary, Women's Gym and main academic buildings.

All of these factors add up to make Knapp a very exciting place to live. Our girls have a reputation for going on to become leaders on the Tech campus—join us this fall and see why!

Stangel Hall

The 521 upperclasswomen who live in Stangel Hall are offered the opportunity to live in the first co-educational residence hall on the campus. It is connected to Murdough Hall, men's hall, by a lounge and cafeteria on the first floor and mezzanine, a recreation room, and snack bar in the basement.

The activities of the hall will cater to the needs of upperclasswomen with the emphasis on scholarship, friendliness, and participation in campus activities. Study rooms are provided on the upper floors as well as in the basement after closing hours. Those attaining high levels of scholarship are honored throughout the year. Friendliness is encouraged by the atmosphere of the

hall and through the participation in hall and campus activities, such as the celebration of holidays, birthdays, and special days on the campus.

The facilities of the hall are of a unique quality and certainly add to the pleasure of living in this dorm. A beautifully decorated and very comfortable snack bar will be available to Stangel Hall residents. The landscaping includes a garden area adjacent to the snack bar. A glassed-in cafeteria is on the mezzanine, which overlooks the lounge and office area. Facilities are provided on the mezzanine for card playing, visiting, and television viewing.

We hope you will join us in Stangel Hall.



Left to right: Linda Schwab, AWS representative; Sally Swatzell, president; Sandy Korona, vice president; Linda Logan, advisory chairman.



Left to right: Susan Clayton, AWS representative; Ann Weaver, vice president; Ann Hearn, advisory chairman; Gayle Snure, president.

Wall Hall

Fun begins at Wall, one of the newest freshman dorms on the Tech campus. The exciting anticipation of a first year away from home is fulfilled by the spirit and activity in Wall Hall. Come join us and begin your college days where the action is.

This home of 404 coeds is easily accessible to the Library, Student Union, and academic buildings. A sun deck, concession room for quick snacks, color television, informal lounge where bridge foursomes often gather, and a private study room are added benefits for comfortable dorm living. For your convenience, Wall has laundry facilities, elevators, and a phone in each room.

Special traditions maintained by Wall are serenades by fraternities and men's

dorms, the scholarship banquet, mixers, and seasonal parties, often with skits presented by each wing. Exchange dinners and open houses give Wall girls the chance to show off their dorm to friends, family, and dates. Each year, the girls eagerly await the tapping of legislators.

Wall coeds really go places, in the dorm as well as on campus. Scholarship is not slighted, however, for Wall has held the trophy for being the freshman dorm with the highest grade average for the past four years. All of these many activities and honors add up to fun . . . and a girl from Wall is fun!

Weeks Hall

You will find that living in Weeks Hall will add a special charm to your college days, for Weeks Hall offers you beautiful, tasteful surroundings, and modern living conveniences.

Just off the main lobby is the formal lounge for entertaining your friends and parents. An informal lounge is perfect for watching favorite television programs and playing bridge games with friends and dates.

Traditions begun by Weeks' upper-classwomen in the past are an important part of the hall life. Each Christmas we collect toys and donate them to a

children's nursery in Lubbock. Another Christmas tradition is the candlelight caroling service given by our seniors.

You will also enjoy the all-dorm parties, serenades by fraternities, intramural sports, and other group activities taking place all through the year.

We are especially proud of our scholarship trophy after winning it nine years in succession. We will be working hard to continue this record. We know that you will find your stay in Weeks a memorable living experience.



Left to right: Jan Crudgington, advisory chairman; Ginger Cone, president; Sandy Sibilsky, AWS representative; Chickie Morgan, vice president.

Honoraries



Jean Hargrave

Alpha Lambda Delta

Alpha Lambda Delta, national honor society, extends membership to any freshman woman who has a 3.5 grade average and 15 semester hours credit. If she does not qualify at the end of her first semester, a freshman may become eligible by attaining a 3.5 over-all grade average with 30 semester hours.

Activities are many and varied for the Alpha Lambda Delta member. At the beginning of the fall semester, all freshman women are invited to a party to acquaint them with the ideals and requirements of Alpha Lambda Delta. After mid-semester, Alpha Lambda Delta hosts a "Smarty Party" honoring freshman women who have attained a 3.0 grade average to encourage them to fulfill Alpha Lambda Delta requirements. In the spring, new members are honored at a banquet with Phi Eta Sigma, freshman men's honorary.

Alpha Lambda Delta strives to promote intelligent living and a high standard of learning, and to encourage superior scholastic attainment.

OFFICERS

President Jean Hargrave
Vice President Roberta Albracht
Secretary Terrie Stewart
Treasurer Susan Blinderman
Initiation Chairman Amy Hammer
Reporter Susan Cooper



Junior Council

A red blazer with the distinctive Junior Council red and black insignia indicates a Tech woman who has received the highest honor which can be conferred upon a junior woman.

Junior Council, one of the oldest women's organizations on the campus, chooses for membership each year twenty-five outstanding sophomore women who have excelled in scholarship (at least an over-all of 3.0), leadership, and dependability while at Tech.

Each year the Junior Council women decide upon their projects. In recent years, the Junior Council has held fundraising shoe shines to be used for service projects. Children from area children's homes are treated to a Tech football game and party on Junior Techsan Day. A future project is assistance in making tape recordings to be used by blind students at Tech. Junior Council is always ready to serve as hostesses for Texas Tech.

OFFICERS

President Nancy Roebuck
Vice President Cindy Willoughby
Secretary Jeanette Snelgrove
Treasurer Bonnie Craddick
Historian Janet Heineman
Public Relations Janie Beddingfield
AWS Representative Gay Shamblin
Senior Advisor Lynn Cox



Nancy Roebuck

Mortar Board

"We Mortar Boards receive you with welcome hearts and hands . . ." echoes over our campus one special day each spring as Forum Chapter of Mortar Board taps its new members. Five to twenty-five junior women are admitted to this select group each year. It is the highest honor they may receive, based upon scholarship, leadership, and service.

Mortar Board was founded in 1918 and has over 117 college and university chapters in all parts of the United States. After many years of petitioning the national organization, Forum became Mortar Board in 1957.

Mortar Board strives to serve both its individual members and the campus. Activities include the Homecoming coffee for alums, hostessing Operation Seniorita, the Smarty Party for freshman women having a 3.0 grade average, and attending various cultural events together.

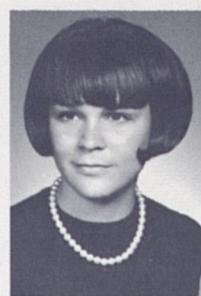
Mortar Board introduced this year Faculty Appreciation Week, whereby outstanding faculty members were recognized with a book placed in their honor in the Tech Library.

OFFICERS

President Diane Hatchett
Vice President Lynn Cox
Secretary Kate Gully
Treasurer Eren Johnson
Projects Marilynn Crawley
AWS Representative ... Jan Crudgington



Diane Hatchett



Kay Shelton

Delta Psi Kappa

Delta Psi Kappa, the honorary fraternity for women majoring or minor-ing in physical education, has as its objectives the promotion of fellowship and the advancement of the ideals, in-terests, and welfare of women in the field of physical education.

Beta Iota chapter was organized on the Tech campus in March, 1967.

Prospective members must have com-pleted 15 hours in physical education and must have a 2.7 overall average and a 3.0 average in physical education. They must also be active in professional service to, and promotion of activities in, the Physical Education Department.

OFFICERS

President Kay Shelton
1st Vice President Buffy Moser
2nd Vice President Betty Witcher
Secretary Marilynn Crawley
Treasurer Dene McDonald
Chaplin Betty Bonner
AWS Representative Ann Barton
Reporter Melynn Trimmier



Sara Peek



Mu Phi Epsilon

"Music is the noblest of the arts, a source of much that is good, just, and beautiful." This symbolizes the unity felt among Tech women music majors and minors of Mu Phi Epsilon.

This international professional music sorority for women was founded at the Metropolitan College of Music in Cin-cinnati, Ohio, on November 13, 1903. The Tech chapter, Epsilon Pi, was in-stalled in 1952.

Epsilon Pi requires its members to have a 2.5 overall grade average with a 3.0 grade average in music courses. Qualities of musicianship, leadership, and friendliness are essential.

Tech's chapter supports recitals on and off campus and performances of individuals in the musical productions at Tech. An award is presented annually by the chapter to a deserving and tal-ented member.

OFFICERS

President Sara Peek
Vice President Jolena Schloer
Secretary Patricia Burke
Treasurer Julie Richards
AWS Representative Judy Storm

Phi Gamma Nu

Tech women majoring in business administration express their views and goals through Phi Gamma Nu, a na-tional women's professional sorority established at Tech in 1949. Lambda Chapter encourages scholarship and ac-tive participation in college activities.

Through Phi Gamma Nu, future businesswomen learn about the world of business they will soon enter. Tours of Lubbock business firms and dinner banquets featuring professional speakers are enjoyed by the members.

Members are women students work-ing toward a degree in some phase of business administration. Pledges must have completed at least 6 hours of com-merce and have a 2.5 grade average. The senior coed majoring in business ad-ministration with the highest scholastic average receives a scholarship key each year.

OFFICERS

President Karen Swann
Vice President Di Doshier
Secretary Sherrill Martin
Treasurer Janelda Hays
AWS Representative Jo Ann Ratliff
Rush Chairman Sharon Wimmer
Pledge Trainer Jeanette Bednarz
Reporter Jeanette Snelgrove
Efficiency Gail White



Karen Swann

Phi Upsilon Omicron

Members of Phi Upsilon Omicron are chosen from women majoring in home economics who have completed their sophomore year and have an over-all grade average of 3.0 or better.

The honorary fraternity bases selection on character, scholarship, and campus activities, as well as on interest in home economics as a profession.

The activities of the organization give meaning to the stated purposes of strengthening the bonds of friendship, promoting the moral and intellectual development of its members, and advancing and promoting home economics.

Each year the group contributes to the Phi Upsilon Omicron scholarship and supports local welfare and alumni projects. Two teas are given annually, one for freshmen in home economics and one on Founder's Day.

OFFICERS

President	Gail Carter
Vice President	Peggy Dennis
Recording Secretary	Carolia Bass
Corresponding Secretary ..	Bretza Clark
Treasurer	Cynthia Beene
Chaplain	Ruth Rucker
Historian	Cindy Gruner
AWS Representative	Alice Anderson



Gail Carter



Kanda Kinney

Tau Beta Sigma

Tau Beta Sigma, the honorary fraternity for bandswomen, was granted its national charter on March 26, 1949; on May 4 of that year, Beta Chapter was installed on the Tech Campus. Tau Beta Sigma was actually founded on the Tech campus; Alpha chapter, however, is located at Stillwater, Oklahoma, in order to share headquarters with Kappa Kappa Psi, the honorary fraternity for bandmen.

The purpose of the sorority is to promote and cultivate a wholesome respect for band activities, to honor outstanding bandswomen, to stimulate campus leadership, to foster a closer relationship among college bands, and to provide a pleasant social experience.

To become a member, a coed must be a member of one of the Tech bands and have a 2.25 grade average for the semester prior to her initiation.

Throughout the year, the chapter's greatest contribution and responsibility is the completion of the numerous essential tasks which maintain "That Goin' Band from Raiderland" in its rightful position of repute and respect throughout the nation.

OFFICERS

President	Kanda Kinney
1st Vice President	Diane Lovelace
2nd Vice President	Jan Landers
Secretary	Marilyn Biehler
AWS Representative	Judy Johnson



Christie Chapman



Theta Sigma Phi

Theta Sigma Phi, professional fraternity for women in journalism, unites women in the field of communications in the work of fostering and maintaining a free and responsible press.

Tech's student chapter sponsors three major projects a year. In the fall, the Best Dressed Coed is chosen in a Theta Sig contest. In the spring, Theta Sigs sponsor the Most Handsome Man contest. Candidates entered by campus organizations are voted on by means of students' pennies and the winner is announced at a dance which climaxes the week of voting. The Theta Sig Red Balloon Sale is on the traditional "All I See Is Red Day."

These three projects help to raise money for a scholarship, which each year is awarded to a deserving woman journalism major. The scholarship is named for Mrs. Louise Allen, professor emeritus of the journalism department.

Tech's student chapter also cooperates with the local professional chapter in a number of projects, including the annual Matrix Table banquet at which the student chapter recognizes a senior woman as Tech's Outstanding Woman Journalist.

OFFICERS

President	Christie Chapman
Vice President	Rebecca Young
Secretary	Kathy Rhoads

Treasurer	Sara Raney
Publicity	Denis Welch
Pledge Trainer	Stormy Newsome

College Panhellenic



THE PANHELLENIC CREED

We, THE UNDERGRADUATE MEMBERS of women's fraternities, stand for good scholarship, for guarding of good health, for maintenance of fine standards, and for serving, to the best of our ability, our college community. Cooperation for furthering fraternity life, in harmony with its best possibilities, is the ideal that shall guide our fraternity activities.

We, THE FRATERNITY WOMEN OF AMERICA, stand for service through the development of character inspired by the close contact and deep friendship of individual fraternity and Panhellenic life. The opportunity for wide and wise human service, through mutual respect and helpfulness, is the tenet by which we strive to live.

An Introduction to College Panhellenic...

Dear Rushee,

You will soon arrive at Texas Tech to begin your college career. Many of you will participate in MEMBERSHIP SELECTION WEEK, a program that can result in many friendships for you, regardless of whether or not you pledge a sorority. A rushee has the opportunity of meeting hundreds of other new students and an equal number of sororities taking part. You will meet your future sorority sisters and other girls with whom you will form close friendships.

Before you arrive, you will want to give careful thought to what sorority membership should mean in terms of your obligation as a future member and in terms of what you expect to gain personally through this association.

The thirteen National Panhellenic Conference sororities on the Tech campus maintain high standards in matters of personal conduct, scholarship, and campus citizenship. The all-sorority grade average is consistently higher than the all-college or all-women's grade average. Your scholarship is an important consideration for the sorority, for its members are expected to maintain above average academic ranking. In addition, each sorority supports a national philanthropy; each member, collegiate and alumna, participates in the local projects. Those of you who understand the relationship between a member and her sorority and who wish to share in this relationship will find the group best suited to you personally. An open mind and natural, friendly manner will assure a meaningful and enjoyable MEMBERSHIP SELECTION WEEK for you. We look forward to meeting you soon.

Dorel Payne, President
College Panhellenic Association



Top row, left to right: Marilyn Foster, scholarship chairman; Jill Tooley, junior panhellenic; June Mayo, AWS representative and social chairman; Carol Snodgrass, rush chairman; Front row, left to right: Dorel Payne, president; Pat Neal, vice president; Loretta Albright, secretary.

What Is Panhellenic?

The word *Panhellenic* is derived from Greek roots: "Pan" meaning all and "hellenic" meaning Greek. Panhellenic is thus an organization in which all Greek letter social sororities are represented nationally as well as on this campus.

To promote inter-sorority cooperation and to strengthen sorority-community relations as a whole, the thirteen social sororities at Texas Tech are member groups of the College Panhellenic Association.

COLLEGE PANHELLENIC COUNCIL

The governing body of the organization is the Panhellenic Council, composed of two representatives from each sorority. This council meets regularly to discuss questions of mutual concern and interest and to plan the various activities and special events sponsored by Panhellenic throughout the year. Before action is taken on certain matters, the representatives have an opportunity to discuss questions with their chapter so that all sorority members have a voice in Panhellenic decisions.

The officers of College Panhellenic Council are ex-officio members of the council. The executive board meets bi-monthly to discuss plans and, in some cases, to make recommendations to the council for action, to coordinate the various activities of the association, and to conduct routine business matters. The officers serve as rush advisors and coordinate rush week.

Panhellenic officers are as follows:

President	Dorel Payne
Vice-president	Pat Neal
Secretary	Loretta Albright
Treasurer	Linda Schragg
Social Activities	June Mayo
AWS Representative	Rosita Bloom

Scholarship Chairman	Marilyn Foster
Junior Panhellenic	

Executive	Jill Tooley
Rush Chairman	Carol Snodgrass

The following are the Panhellenic delegates: Lynn Kirkpatrick, Linda Rice, Page Calhoun, Beverly Johnson, Marsha McCurry, Gail Minch, Patty McKinney, Marsha Shaver, Jackie Jones, Anne Stout, Susan Searls, Janis Lynn Jones, Margie Cope.

GREEK GUIDE

BID — an invitation to join a sorority.

FRATERNITY — although the name is applied to all Greek-letter organizations, it is more commonly used in referring to all men's Greek groups.

GREEK — the name applied to sorority and fraternity members.

INITIATION — the ceremony by which the pledge becomes a member.

LEGACY — a rushee whose grandmother, mother, or sister is an alumna or member of a certain sorority.

MEMBER — a woman who has met the pledge requirements of a sorority and has been initiated into the sorority.

PLEDGE — a student who has accepted the bid of a sorority and has participated in the pledge ceremony.

RIBBON-PLEDGING — a ceremony which precedes formal pledging. The pledge receives a ribbon of the sorority colors.

RUSH — the period set aside for the sororities to entertain rushees in an effort to get acquainted and to secure new members.

RUSH ADVISOR — a Panhellenic representative who is responsible for advising and aiding rushees.

RUSHEE — a woman who is indicating her interest in membership in a sorority by participating in rush.

SORORITY — a group of university women who have chosen to establish a close affiliation with one another.

SORORITY RECOMMENDATION — a personal reference from an alumna of a particular sorority. (Each sorority is responsible for obtaining these recommendations.)

SPIKING — a persistent persuasion on the part of a sorority or sorority member to secure from a rushee some commitment of preference for that group.

WHAT ARE SORORITIES?

ACTIVE CHAPTERS

A sorority is an organization whose members have elected to establish a close affiliation and friendship with one another. Each sorority has a similar purpose—to offer an opportunity for close friendship and to teach its members leadership through the experience of working with others on common goals and projects. Mutual interest in education, college activities, and in each other binds the group together. Every sorority encourages and expects above average scholarship. Each encourages participation in varied activities which in turn offer unlimited and valuable experience.

Sororities promote lifetime friendships that are maintained after college in alumnae groups and chapters. The affiliation with a national organization gives chapter members a meaningful concept of their responsibility as individuals in a group.

ALUMNAE GROUPS

Upon leaving college, initiated members of the sorority become alumnae and are eligible for membership in alumnae organizations. Each of these groups participates in a wide range of philanthropic and educational projects sponsored by its national organization and in addition gives support to local community programs.

HOW DO SORORITIES CHOOSE THEIR MEMBERS?

Before a sorority asks you to pledge, the members want to be sure that you will be happy in their group and that they, in turn, will enjoy working with you. It is important for the sorority members to meet you and to see you as you really are. Formal rushing has been planned with this idea in mind. At the parties, sorority members will decide whether they think you will be a congenial member of their group.

Naturally, you want to make a "good impression" and you will dress carefully, as will the girls whom you are going to meet. But do not think your appearance is all that counts. *Your high school record of activities and scholarship is carefully considered by a sorority in determining your potential as a member.* These are, after all, fairly dependable indications of your future achievements at Texas Tech.

Each sorority is limited in its total membership and its total number of pledges each year. The number of pledges allowed each chapter is determined each year by the number of young women interested in sorority membership. Each sorority was able to pledge a maximum of thirty-five women during the last formal rush period.

HOW DO YOU CHOOSE A SORORITY?

You should choose a sorority in exactly the same way you would choose any group of friends. It should be a decision based upon mutual interests and friendship.

During rush you will have many opportunities to talk with sorority women. They will be looking at you as a potential friend and you will be looking at them in the same manner. Act, then, as if you were with a group of your

friends and talk about things which really interest you. Do not be afraid to ask questions about their sorority activities and finances. Sorority members will be happy to talk with you about them.

Do not set your heart on one group alone. It is best to know several groups. Remember to look for the heart of the sorority—its members. The ones you choose as sorority sisters will be your close friends for four years of college and for years afterwards. Every group is worthwhile and has much to offer.

Make up your own mind about joining a sorority. Do not be influenced by the opinion of your associates and relatives. You alone are affected by this decision. The essential thing is to choose a group of women with whom you will be congenial.

FINANCES

One of the important considerations in deciding to pledge a sorority must be whether or not you would be able to meet your financial responsibilities. The financial requirements for the pledges and members of all sororities at Texas Tech are similar. Check your pocketbook and consider carefully the expenses of being a sorority pledge and member.

If you can afford to pledge a sorority, the extra expense is repaid a thousandfold in companionship and sisterhood. Be sure you want to assume this obligation before choosing a group and pledging it.

RANGE OF SORORITY EXPENSES — 1969-1970

<i>Pledge's Financial Obligation</i>	\$200.00-235.00
which consists of:	
Pledge Fee (paid at time of pledging)	\$10.00-28.00
Monthly Pledge Dues (paid	

during pledgeship)	\$15.00-20.00
Initiation Fee (paid at time of initiation)	\$40.00-105.00
Badge (some included in initiation costs)	\$4.50 and up
Members' Yearly Financial Obligation	\$126.00-166.00
Monthly members' dues (paid after initiation)	\$14.00-18.50

Most groups have a building fund fee ranging from \$50.00 to \$100.00. This total amount may be in addition to the above standard fees or included in monthly dues. Other items which may or may not be included in dues are the following:

- 1) personal insignia jewelry
- 2) composite pictures
- 3) favors for dinner dances
- 4) retreats
- 5) life membership fees
- 6) additional national fees

The preceding figures represent the amount which must be met by each pledge and each member. Aside from these, any additional cost is up to the individual. Some of the extra things that should be considered are sweat-shirts, blazers, windbreakers, Big and Little Sister presents, and costumes for rush.

All sororities receive financial supervision from experienced alumnae and employed accountants. The financial advisors of the chapter welcome consultation with parents at any time.

FORMAL RUSH LIVING ACCOMMODATIONS FOR RUSH WEEK

Rushees will be housed in the rooms to which they have been assigned for the fall semester. The Housing Office will notify you of your room assignment by mail. Lubbock rushees who

will not be living on campus during the fall semester will be housed at no extra cost in Robby's Dorm for Rush Week. Assignments to rooms in Robby's will be made at rush registration.

The Tech Union will open at 10 a.m. Sunday, August 24, for registration. *You are to go first to the Union in order to begin rush registration with Panhellenic.* After you have completed registration at the Union, you will move into your residence hall. You must register and move into the dorms between 10 A.M. and 2 P.M. Sunday, August 24, 1969.

Meals will be served by the regular dorm cafeterias. Meal tickets will be issued at rush registration.

Closing hours for the residence halls will be announced during Membership Selection Week. Each rushee is responsible for signing in and out of the hall. Rule infractions will be transferred to your fall semester record.

Panhellenic expects all rushees to be neat, orderly, and quiet in their rooms, and to be courteous and cooperative with those in charge of the residence halls and with the people administering the program.

TRANSPORTATION

Each rushee is responsible for her own transportation to and from the parties. Neither sorority members nor alumnae are allowed to transport rushees. If an emergency arises, call the Panhellenic Office, and a Panhellenic person will be sent.

IMPORTANT TIPS FOR RUSHEES

1. Fill out the Rush Registration Form, 13 information blanks, and grade information slips and return them to the Director of Student Activities, 171 Ad Building, Texas Tech, by JULY 20, 1969.

2. A rush registration fee of \$7.85 and a room fee of \$12.15, for the first two nights of rush on August 24 and

25, must be paid in one check (\$20.00) made payable to Texas Tech Panhellenic Association. Your registration for rush will not be complete until all fees are paid, and information blanks, registration and grade forms, and pictures are received. Only registrations that are complete and postmarked before midnight, July 20, 1969, will be accepted. *(No exceptions will be made to this policy.)*

3. If you find you must cancel your rush registration, you must notify the Office of Student Activities. Your room fee of \$12.15 will be refunded if you cancel by July 20. No exceptions to this policy will be made. *Academic ineligibility after July 20 forfeits both the registration and room fees.*

4. The College Panhellenic Advisor's office is permanently located in the Office of Student Activities; however, during rush, all activity and business will take place in a temporary Panhellenic Office.

5. You may send checks or money orders, but please do not send cash through the mail.

6. It is recommended that registration be completed as soon as you receive the material from the Panhellenic Office.

You may register by mail or in person. Only registrations that are complete and postmarked before midnight July 20, 1969, will be accepted.

If you do not get a card from Panhellenic confirming receipt of rush registration, notify the Office of Student Activities.

MEMBERSHIP SELECTION WEEK SCHEDULE

(A complete schedule with exact times and places will be given rushees at registration.)

Parties for Period I are held in various locations on the campus. Parties II, III, and IV will be held in private homes in Lubbock or in sorority lodges.

Sunday, August 24

10:00 A.M.-2 P.M. — Registration in the Student Union and move into rooms.

3:00 P.M. — Rushee Convocation and silence begins. Rush tests will be given at this time.

PERIOD I

Party duration — 30 minutes. You must attend each party. There are five parties beginning at 6:00 P.M.

Monday, August 25

PERIOD I CONTINUED

Eight parties beginning at 9:30 A.M. There will be a break for lunch.

Tuesday, August 26

PERIOD II

Party duration — 45 minutes. You must accept all invitations to a maximum of eight. 9:30-10:30 P.M. — Pick up invitations. Eight parties beginning at 1:00 P.M.

Wednesday, August 27

PERIOD III

Party duration — 1 hour. You must accept all invitations to a maximum of four.

2:00-3:00 P.M. — Pick up invitations. Four parties beginning at 6:00 P.M.

Friday, August 29

PERIOD IV

Party duration — 1½ hours. You must accept all invitations to a maximum of two. 2:00-3:00 P.M.—Pick up invitations. Two parties beginning at 6:30 P.M.

10:30 P.M. — rushees sign preference cards.

Saturday, August 30

Free time. — Rushees are still on silence. Activities are planned for those who want to participate.

Sunday, August 31

2:00 P.M. — Rushees pick up their bids and meet their sorority at a designated place.

WHAT TO WEAR—WHEN

One of the most important things to remember when planning what to

wear is the warm climate of Lubbock. Simplicity and practicality are the key rules in campus wear. You need not bring special clothes to rush, for those you choose from your college wardrobe will be suitable. Be comfortable and well groomed.

Tech coeds do not wear shorts or pants of any kind in the Tech Union nor in academic buildings. This applies to rush as well, including registration. Curlers will not be allowed in the Tech Union.

Period I — Wear lightweight casual clothes, low shoes, and hose. (Shoes should be comfortable for walking.)

Period II — Wear lightweight casual clothes, low shoes, and hose.

Period III — Wear church clothes, heels, and hose.

Period IV — Wear an after-five dress, hose, and heels.

Be natural and be yourself at rush parties! Good manners are important equipment for making favorable impressions, and they help express your personality. Talk about any subject that interests you, and don't be afraid to ask questions. Be a good listener, also. Don't be "snowed" by the parties: just remember the girls that you meet.

SUMMER RUSH

The College Panhellenic Association of Texas Technological College has adopted the policy of not participating in any form of summer rush. This prohibits any Tech sorority girl and any potential rushee from participating in or attending any function given by only one fraternity prior to Formal Rush Week.

Violations of this rule should be reported in writing to the Panhellenic Sponsor within two weeks of the incident. Mark "personal" on the envelope. These matters will be taken up at the first meeting of the Judiciary Committee of Panhellenic.

OPEN RUSH

The period of Open Rush begins immediately after formal rush if any sorority is eligible to participate. A girl may indicate her interest in participating in Open Rush in the Office of the Panhellenic Advisor, Rm. 171, Ad Building.

RUSH TEST

During Convocation on Sunday, August 24, 1969, a multiple-choice test will be given each rushee. The test will cover all the material concerning rush as presented in Tech Tips. A passing grade of "90" or better is required. The purpose of this test is to insure each rushee's knowledge of the procedures of rush. A sample test will be included in the rush registration packet. There will be no excuse, therefore, for not knowing the regulations for rush.

RULES GOVERNING FORMAL RUSH WEEK

Rules have an important purpose in rushing. When the College Panhellenic Council makes the rules for rushing, it tries to give all rushees and sororities equal consideration. Rushing is really not mysterious when you understand its regulations and purpose. Much careful organization goes into creating a rushing schedule that gives all concerned a fair opportunity to reach necessary decisions. Follow the rules, stay relaxed, and make the most of rushing experiences.

I. Eligibility of Rushees

Rushees must be regularly enrolled or in the process of enrolling in Texas Technological College for 12 or more hours in order to be eligible to participate in any rushing program. Rushees entering from high school must have at least a "C" high school average to be eligible. (It is recommended this be at least a high "C" average.) Any rushee previously enrolled in any college, including summer school, must have at

least a "C" overall average and a "C" average the previous semester prior to pledging in which she was enrolled in order to be eligible for rushing. Semester prior to pledging shall be interpreted as the fall or spring semester or the complete schedule of summer school work. All rushees are responsible to see that their transcripts have been received by the Registrar's Office of Texas Tech before the day rush begins. Complete the Grade Information Form enclosed with other material.

II. Membership Selection Rules

1. Rush Week is defined as beginning at 10 A.M., Sunday, August 24, 1969, and ending with receiving of bids Sunday, August 31. Silence begins at 3 P.M., August 24, 1969, when convocation is held.

2. Upon arrival in Lubbock, a rushee is not to go to the home of sorority members or be with anyone connected with a sorority other than members of her immediate family.

3. Rushees shall not grant interviews to the press nor pose for photographers during Membership Selection Week unless arrangements have been made with College Panhellenic and the Office of Director of Student Activities.

4. Emergency telephone calls will be taken care of through the dorm counselor.

5. A rushee must arrive and leave all rush parties at the hour specified in the invitation.

6. If a rushee gets lost trying to find a party, she should notify the Panhellenic Office so that they may notify the sorority that she will be late. Do not cut a party just because you'll be late. The sorority will understand and will want you to come.

7. Under no circumstances should a rushee call a sorority house for any reason during Rush Week. Should the rushee confuse the times, or the places, or her parties, or becomes ill, she should notify the Panhellenic Office, which will notify the sorority.

8. Should a rushee be forced or wish to discontinue rush at any time, she must contact the Panhellenic Office.

9. If a rushee cannot attend a party due to illness, she must not notify the chapter herself. *A rushee must attend every party whose invitation she has accepted.* Cutting a party without the permission of the Panhellenic Office may result in the forfeiture of the remainder of rush.

10. Panhellenic name tags will be issued to the rushee at Rush Convocation to be worn on all occasions. A rushee is responsible for her name tag throughout Rush Week.

11. Rushees are required to bring rush rules booklet, pencil, and a schedule of all accepted parties to all convocations.

12. There is to be no smoking at any of the rush parties.

13. Rushees are subject to the penalty of deferred pledging for one semester for violation of rush rules.

14. A rushee must pick up her own invitations; she may *not* send someone to pick them up for her. If a rushee doesn't pick up her invitations, Panhellenic will assume that she has withdrawn from rush.

III. Counseling During Rush

Counseling is one of Panhellenic's major functions during Rush Week. Panhellenic offers rushees counseling on personal as well as technical aspects of rushing. There will be a rush advisor living in the dorm during Rush Week. She will be available for counseling at all times. Each rushee will also be assigned a rush advisor who will be available in the dorm at the designated times to be set at registration.

If a rushee desires to discontinue rush by regretting all of her invitations, she is urged to take advantage of Panhellenic Counseling available at the post office before making a final decision.

Counseling will be provided in the following places:

1. Counseling headquarters, SUB
2. Rush Office, Ad Building
3. In dormitories, at designated times and places

IV. Silence During Forhal Rush

Silence is a time when all rushees are asked not to converse with people other than the rush advisors except at the parties. The reason for this is that Panhellenic does not want a rushee's choice of a sorority to be the result of outside influence. Women are much happier in a sorority which they themselves have chosen rather than a group which parents, men, and other friends encourage them to join. A rushee must not discuss sorority membership with another rushee since this must be an individual decision. A rushee is allowed, however, to associate with rushees during Rush Week.

1. The period of silence begins with Convocation (*which every rushee must attend*) on Sunday, August 24, 1969, at 3:00 P.M., and ends with the acceptance of a formal bid on Sunday, August 31. *Rushees may not receive guests in the hall during the period of silence.*

2. There shall be no contact or conversation between a rushee and sorority member, pledge, or alumna except at the specified rush parties. You may say hello.

3. Sororities are bound by silence and may not deliver letters, telephone calls, or telegrams to rushees at any time, nor may they enter a rushee's room during the period of silence.

4. No sorority woman (active or pledge) may be present in a room where any rushee resides (and vice versa) during formal rush week, unless she is a resident of that room during Rush Week.

5. A rushee who is the roommate of a sorority member will naturally be in contact with her, but they *must not discuss sororities or rush.*

6. You may not receive *any* mail, phone calls, or visitors. Emergency

packages and messages may be checked through the Panhellenic Office and then be given to rushees.

7. Emergency telephone calls will be taken care of through residence rush advisors and hall counselors. Request that your family and friends not insist upon talking with you during rush for you are the one who is penalized.

8. There is no contact whatsoever with men, family, or friends during Membership Selection Week. The rushee may not leave the city of Lubbock to go home or for any other reason.

9. All dorm doors will be marked with tags indicating "Rushee" and "Greek".

10. Breaking of Silence before Membership Selection Week is over will result in appearance before the Pan-

hellenic Judiciary Committee and possible removal from rush.

V. Illegal Rushing

1. Oral invitations to parties or to join a sorority are absolutely forbidden and are not valid during formal rushing.

2. By mutual agreement there shall be no "spiking" at any time. (See definitions.)

3. Sorority members shall make no statements to rushees or to others giving their idea of sorority ratings, for there is no such thing.

4. No gifts, flowers, or favors can be given to rushees with the exception of Period IV parties. The rushee is to take nothing from any of the parties with the exception of Period IV.

VI. Penalties for Violations of Membership Selection Rules by Sororities

1. It is your responsibility to report any infractions of any rush rules within 48 hours of the occurrence. All penalties for violations of rush rules will be decided by the Judiciary Committee of College Panhellenic.

2. Rushees should remember that if a sorority member(s) issues oral invita-

tions to attend rush parties during Rush Week or to join her group, or the sorority members violate any other rush rules, it is a breach of the sorority's honor, and *must* be reported by the rushee to Panhellenic.

Rush Registration Instruction

Have you followed these steps in preparing your rush registration materials? DEADLINE—JULY 20, 1969.

1. One check for \$20 payable to Texas Tech College Panhellenic for your registration and room and fee.

2. Thirteen white Information Blanks, legibly filled in.

3. Fourteen billfold pictures of yourself.

4. White Master Rush Registration Form completed.

5. Grade Information Form filled in.

6. Place check, Registration Form, thirteen Information Blanks and fourteen pictures, and Grade Information Form in one envelope and mail to Office of the Director of Student Activities, 171 Ad Building, Texas Technological College, postmarked no later than July 20, 1969.

7. Do you know your eligibility? If you have attended college any place at any time, this affects your rushing eligibility. You must have a "C" average for any previous college work. You must also have a "C" average for the preceding regular semester of college if you were enrolled during a regular academic year or the complete schedule of summer school work. If you are entering directly from high school, you must have a minimum "C" average for all high school course work. You cannot have been a member of an NPC sorority at Texas Tech or elsewhere prior to this time. If you have pledged but were not initiated, a year must have lapsed since depledging or your pledgeship must have expired by the date you sign a preference card.



Left to right: Kathy Krug, rush chairman; Susan Elrod, president; Sandy Korona, AWS representative; Cathy Jones, pledge chairman.

Alpha Chi Omega

GAMMA RHO



Founded at DePauw University, October 15, 1885

Number of collegiate chapters — 111

Colors — Scarlet and olive green

Insignia — Lyre with black enamel scroll across strings bearing Greek letters

Flower — Scarlet carnation with smilax

Publication — "The Lyre"

Philanthropy — Aid to cerebral palsy patients

Nickname — Alpha Chi

Outstanding events — Founder's Day Dinner, Formal Pledge Presentation, Hawaiian Luau Dinner Dance, Chapter Retreat and Workshop, Pledge Retreat, Senior Farewell Banquet, Paddle Party, Alpha Chi Week in honor of new initiates, Homecoming Coffee, Dad's Day Tea, Faculty Tea, and Kidnap Breakfast

President — Susan Elrod

Rush Chairman — Kathy Krug

Alpha Delta Pi

EPSILON EPSILON



Founded at Macon, Georgia, May 15, 1851

Number of collegiate chapters — 128

Colors — Azure-blue and white

Insignia — Twenty jewels outlining a black diamond-shaped pin on which are the clasped hands, stars, and Greek letters Alpha Delta Pi

Flower — Violet

Publication — "The Adelphean"

Philanthropy — National Aid to crippled children and adults, 1851 Memorial Fellowship Fund, Wesleyan College Scholarship, Abigail Davis Student Loan Fund

Nickname — A D Pi

Outstanding events — Chapter and Pledge Retreats, Fall Presentation of the pledges, Faculty Tea, Pledge Project, Chapter Christmas Party, Homecoming Coffee, Dad's Day Open House, Scholarship Banquets, Founder's Day Banquet, Kidnap Breakfast, Initiation Banquet, Senior Dinner, Dinner Dance, Party in honor of Big Sisters, Alpha Delta Pi Week in honor of the initiates, Pledge Dinner Party, Alpha Delta Pi State and National Convention, and Culver Conference

President — Betty Garvin

Rush Chairman — Linda Rice



Left to right: Carolyn Rieck, pledge trainer; Betty Garvin, president; Linda Rice, rush chairman; Joyce Kettle, AWS representative.



Left to right: Susan Morris, president; Gaye Finney, rush chairman; Jeanette Snelgrove, AWS representative; Toni Cooke, pledge trainer.

Alpha Phi

GAMMA IOTA



Founded at Syracuse University, October 10, 1872

Number of collegiate chapters — 100

Colors — Silver and bordeaux

Insignia — Plain gold monogram of the two Greek letters with the letters "AEO" in black

Flowers — Lily-of-the-valley and forget-me-nots

Publication — "The Alpha Phi Quarterly"

Philanthropy — Cardiac Aid Foundation

Nickname — A Phi

Outstanding events — Fall Retreat, Presentation Dance, Formal Dinner Dance, Paddle Party, Scholarship Banquet, Alumnae Christmas Party, Kidnap Breakfast, Inspiration Week for initiates, Founders' Day Banquet, Work with Cardiac Aid during Heart Week

President — Susan Morris

Rush Chairman — Gaye Finney

Chi Omega

KAPPA ZETA



Founded at the University of Arkansas, April 5, 1895

Number of collegiate chapters — 152

Colors — Cardinal and straw

Insignia — Fourteen white stones, either pearls or diamonds, arranged in the X (Chi) which is placed on the Greek letter Omega, raised slightly. Greek letters are written across the top. On the sides are the owl and the skull and cross-bones.

Flower — White carnation

Publication — "Eleusis"

Philanthropy — Muscular dystrophy

Nickname — Chi O

Outstanding events — Spring and Fall Eleusinian Festivals, Presentation, Paddle Party, Dinner Dance, Chapter Retreat, Pledge Retreat, Scholarship Banquets, Kidnap Breakfast, Homecoming Coffee, Faculty Banquet, Christmas Party for Orphans, Big-Little Sister Dinner, State Day, biennial State and National Conventions

President — Gracie Sigler

Rush Chairman — Helene Loran



Left to right: Dixie Howell, AWS representative; Helene Loran, rush chairman; Emily Morrill, pledge trainer; Gracie Sigler, president.



Left to right: Susan Morrissey, president; Ginger Blon, rush chairman; Julia Jones, AWS representative; Susan Stephens, pledge trainer.

Delta Delta Delta

PHI ETA



Founded Thanksgiving Eve, 1888, at Boston University

Number of collegiate chapters — 112

Colors — Silver, gold, and blue

Insignia — Three jeweled stars with a crescent of gold bearing three deltas

Flower — Pansy

Publication — "The Trident"

Philanthropy — Awards scholarships to American and Canadian women students

Nickname — Tri Delta

Outstanding events — Founders' Day Dinner, Delta Week in honor of new initiates, Annual Presentation Dance, Scholarship Banquet, Chapter Retreat, Pansy Breakfast

President — Susan Morrissey

Rush Chairman — Ginger Blon

Delta Gamma

GAMMA XI



Founded at Lewis School, Oxford, Mississippi, December, 1873

Number of collegiate chapters — 94

Colors — Bronze, pink, and blue

Insignia — Anchor with white shield bearing Greek letters

Flower — Cream rose

Publication — "The Anchora"

Philanthropy — Sight Conservation and Aid to the Blind

Nickname — DG

Outstanding events — Pinafore Dinner Dance, Fall Presentation, Paddle Party, Fall Retreat, Anchor Week in honor of new initiates, Big Sister-Little Sister Breakfast, Pillow Party, Boat Sailing Party, Founders' Day Banquet, Alumnae Christmas Party for the Blind, Scholarship Dinner, Fraternity Mixers

President — Ann Hybskman

Rush Chairman — Susan Hancock



Left to right: Beverly Peters, pledge trainer; Carroll Todd, AWS representative; Debbie Worde, assistant rush chairman; Cathy Hunley, 1st vice president.



Top row, left to right: Carol Usry, AWS representative; Jackie Williams, pledge trainer; Bottom row, left to right: Rebecca Young, president; Christie Chapman, rush chairman.

Gamma Phi Beta

BETA TAU



Founded at Syracuse University, New York, November 11, 1874
 Number of collegiate chapters — 90
 Colors — Mode and brown
 Insignia — The Greek letters enclosed in a black enameled crescent
 Flower — Pink carnation
 Publication — "The Crescent"
 Philanthropy — Own and operate two summer camps for underprivileged girls at Vancouver, B.C., and Indian Hills, Colorado
 Nickname — Gamma Phi
 Outstanding events — Founders' Day Banquet, Pledge Retreat, Fall Presentation, Spring Dinner Dance, Retreat, Paddle Party, Beta Tau Birthday Party, Senior Breakfast
 President — Rebecca Young
 Rush Chairman — Christie Chapman

Kappa Alpha Theta

GAMMA PHI



Founded at DePauw University, January 27, 1870
 Number of collegiate chapters — 94
 Colors — Black and gold
 Insignia — Kite-shaped, gold border, black enamel shield and a white chevron on which are inscribed the Greek letters
 Flower — Black and gold pansy
 Philanthropy — Through Kappa Alpha Theta Foundation: aid to Institute of Logopedics (speech correction), scholarships, DePauw Memorial Library; also Foster Parents Plan, Inc.
 Publication — "Kappa Alpha Theta"
 Nickname — Theta
 Outstanding events — Pledge Retreat, Chapter Retreat, Pledge Presentation, Christmas Party, Homecoming Reception, Surprise Breakfast, Kite Flight, Big Sister-Little Sister Party, Founder's Day Banquet, Spring Dinner Dance, Scholarship Banquet, Fraternity Mixers
 President — Barbara Durham
 Rush Chairman — Kate Gully



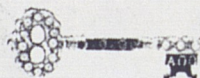
Top row, left to right: Elizabeth Cavin, AWS representative; Sally Swatzell, pledge education; Bottom row, left to right: Kate Gully, rush chairman; Barbara Durham, president.



Left to right: Carla Dunn, president; Althea Allison, AWS representative; Nancy Knorpp, pledge trainer; Pam Jarvis, membership chairman.

Kappa Kappa Gamma

DELTA PSI



Founded at Monmouth College, October 13, 1870

Number of collegiate chapters — 94

Colors — Dark and light blue

Insignia — Golden Key

Flower — Fleur-de-lis

Publication — "The Key"

Philanthropy — Rehabilitation services for crippled children and adults

Nickname — Kappa

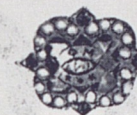
Outstanding events — Chapter Retreat, Pledge-Active Picnic, Fall Presentation, Pledge Peppermint Party, Biennial Spring Dinner Dance, Scholarship Banquet, Inspiration Week, Founders' Day Banquet, Monmouth-Duo, Biennial Santa Fe Retreat

President — Carla Dunn

Membership Chairman — Pam Jarvis

Phi Mu

ALPHA CHI



Founded at Wesleyan College, Macon, Georgia, March 4, 1852

Number of collegiate chapters — 112

Colors — Rose and White

Insignia — Shield of black overlayed on a shield of gold; black shield bears Greek letters and three stars

Flower — Rose enchantrees carnation

Publication — "The Aglaia"

Philanthropy — Project Ship HOPE

Outstanding events — Pledge Presentation, Little Sis-Kidnap Breakfast, Retreat, Dinner Dance, Founders' Day Banquet, Paddle Party, Date Nights, Scholarship Dinner, Spring Picnic, Inspiration Week, Hope Week, Christmas Caroling and Party, Phi Mu State Day, Phi Mu National Convention, Homecoming and Dad's Day Tea, Pledge Castle Party, Philomathian Hours, Phi Mulympic, Mock Election, Fraternity Mixers

President — Barbara Reynolds

Membership Chairman — Anita Powell



Left to right: Ann Strawborn, AWS representative; Linda Crumpton, pledge director; Barbara Reynolds, president; Anita Powell, membership chairman.



Left to right: Nancy Kupp, pledge trainer; Melanie Montgomery, AWS representative; June Waggoner, rush chairman; Betty Waller, president.

Pi Beta Phi

TEXAS GAMMA



Founded at Monmouth College, April 28, 1867

Number of collegiate chapters — 113

Colors — Wine and silver blue

Insignia — Golden Arrow with Greek letters inscribed on feathers

Publication — "The Arrow"

Philanthropy — Founding and Maintenance of the Pi Beta Phi Settlement School in Gatlinburg, Tennessee.

Nickname — Pi Phi

Outstanding events — Fall Chapter Retreat, Pledge Retreat, Presentation, Dinner Dance, Biennial Santa Fe Retreat, Founders' Day Banquet, Arrow Art Mart, Monmouth Duel (Fraternity Game Competition), Senior Farewell

President — Betty Waller

Rush Chairman — June Waggoner

Sigma Kappa

GAMMA IOTA



Founded at Colby College, November 9, 1874

Number of collegiate chapters — 115

Colors — Maroon and lavender

Insignia — Gold triangle supporting a maroon triangle of enamel bearing the Greek letters in gold

Flower — Violet

Publication — "The Sigma Kappa Triangle"

Philanthropy — The Maine Sea Coast Mission; National Gerontology Program; American Girls' Greek School, Salonika

Nickname — Sigma

Outstanding events — Founders' Day Banquet, Big-Little Sister Party, Fall and Spring Retreats, Pledge Levi Party, Paddle Party, Presentation Dance, Inspiration Week, Sigma Dad of the Year, Dinner Dance, Philanthropy Party, Fall and Spring Scholarship Banquets

President Carol Scarboro

Rush Chairman — Susan Berry



Left to right: Carol Scarboro, president; Rosalyn Davis, pledge trainer; Ellen Clower, AWS representative; Susan Berry, rush chairman.



Left to right: Betty Witcher, membership chairman; Kandie Morcom, president; Margie Cope, Panhellenic representative; Cameo Jones, assistant pledge trainer.

Zeta Tau Alpha

GAMMA TAU



Founded at Longwood College, Farmville, Virginia, October 15, 1898

Number of collegiate chapters — 110

Colors — Steel gray and turquoise blue

Insignia — Shield of black enamel superimposed on a shield of gold; black shield bears five-pointed crown and Greek letters

Flower — White violet

Publication — "Themis"

Philanthropy — National Society of Crippled Children

Nickname — Zeta

Outstanding events — Presentation of Pledges, Homecoming Reception, Founders' Day Banquet, Retreat, Scholarship Recognition Service, Easter Party for Underprivileged Children, ZTA-Sigma Chi Soap Fight, Zeta Week in honor of new initiates, Paddle Party, White Violet Breakfast, Dinner Dance, Senior Farewell Banquet

President — Kandie Morcom

Membership Chairman — Betty Witcher

Appendix

Constitution of the Association of Women Students

ARTICLE I Name

SECTION 1. The name of this organization shall be the Association of Women Students of Texas Technological College.

ARTICLE II Objectives

SECTION 1. The objectives of the Association of Women Students shall be:

1. To promote and maintain the highest cultural, educational, and social standards of collegiate life in all women's activities on campus by providing, for the purpose of mutual help and benefit, open discussion of matters affecting college women; by devising, administering, and by acting as a coordinating body of all the women's organizations on campus in setting the standards of living and working together on the campus.
2. To develop leadership, school spirit, and the sense of individual responsibility among the women students by encouraging participation in student government and college activities, and in so doing develop a strong student government and a mutual understanding between the administration and the students.
3. To promote high scholarship among the women students at Texas Tech.
4. To strengthen the spirit of unity and fellowship among the women students and to encourage closer relationships between town girls and the girls on campus.

SECTION 2. The Association of Women Students shall operate under the powers set forth in this Constitution.

SECTION 3. Additional powers will be granted the council each year according to the progression and capability exhibited by the previous General Council and the Association.

ARTICLE III Members

SECTION 1. Every woman student enrolled at Texas Tech shall be a member of the Association and shall pay dues when she registers for classes.

SECTION 2. A sponsor(s) shall be an ex-officio member of the organization. The sponsor(s) or her representative(s) shall act as an adviser to the Association.

ARTICLE IV Officers

SECTION 1. The following officers shall serve as the executive body of the Association and General Council.

SECTION 2. Officers shall be:

1. President
2. First Vice President
3. Second Vice President
4. Third Vice President
5. Secretary
6. Treasurer
7. Intercollegiate Association of Women Students Contact

SECTION 3. Qualifications for officers:

1. They shall maintain a 2.5 overall grade point average for all the time they have

been in school and a 2.5 grade point average for the previous semester at Tech.

2. The president shall have been a member of the AWS General Council or Executive Council for at least a year previous to the term she serves as president.
3. The first, second, and third vice-presidents and the IAWC contact shall have been a member of the AWS General Council for at least one semester previous to the term they serve as an officer. The third vice president must be in summer school or from the surrounding area the summer following her election.
4. The president, vice presidents, secretary, treasurer, and IAWS contact shall be at least a junior at the beginning of their term of office.

SECTION 4. Elections

1. The officers shall be elected during the spring semester by the women students of the college.
2. The term of office for officers and representatives to the AWS General Council shall be one school year.
3. In case the office of president is left vacant, the first vice president shall become president and a new vice president shall be nominated and elected by the General Council. If for any reason a vacancy occurs in any of the other elected offices, the General Council shall nominate and elect someone to fill the vacancy.
4. The second vice president shall serve as chairman of the nominating committee whose members shall be chosen from names submitted to the chairman of the committee with the approval of the Executive Council.
5. The nominating committee shall prepare a slate of officers to be presented at a nominating assembly where other nominations of qualified girls (those who have applied) may be made from the floor.

ARTICLE V Duties of Officers

SECTION 1. President

1. It shall be the duty of the president to preside at the meetings of the Association.
2. She shall exercise supervision over the activities of the Association and be alert to the needs of the campus.
3. She is also president of the AWS Council and presides over this governing body.
4. It shall be the duty of the president to see that the provisions of the Constitution are carried out.
5. She shall have the power to appoint the chairman of all AWS committees with the approval of the executive committee.
6. She shall act as ex-officio member of all committees.
7. She may call a meeting of the council or of the Association whenever necessary.

SECTION 2. First Vice President

1. She shall preside in the absence of the president.
2. She shall assist the president in the direction of the Association and the General Council and shall assume the duties of the president in case the office of the president is left open.

3. She shall serve as program chairman for the General Council.

SECTION 3. Second Vice President

1. She shall plan and supervise the AWS Orientation Program for new women students.

2. She shall supervise the AWS elections and be chairman of the nominating committee.

SECTION 4. Third Vice President

1. She shall be in charge of and supervise AWS activities during the summer.

2. She shall compile, address, and mail TECH TIPS to all entering freshmen women and transfer women students.

SECTION 5. Secretary

1. She shall keep the records of the actions and meetings of the Association and the General Council.

2. She shall take care of all General Council correspondence.

3. She shall file and preserve all reports and papers of the Association and General Council.

4. She shall publicize all activities of AWS.

SECTION 6. Treasurer

1. She shall collect all funds and fines for lack of attendance and care for all bills authorized by the sponsor.

2. She shall have charge of the Association funds.

3. She shall keep a strict and permanent record of all expenses.

4. She shall make a financial report annually and present a proposed budget for the following year. She shall act as ex-officio member of all committees involving finance.

SECTION 7. IAWS Contact

1. She shall be in charge of the clearing house at Tech and she shall take care of all correspondence with member schools of IAWS.

SECTION 8. AWS Representative

1. The AWS representative from an organization shall serve as a liaison between her organization and the General Council.

ARTICLE VI

General Council

SECTION 1. The purpose of the General Council shall be to serve as a legislative body for the Association and to act as a coordinator of all campus organizations engaged in by women students.

SECTION 2. The General Council shall consist of seven elected officers, one representa-

tive from the Freshman Class, and one from each of the recognized women's organizations on the Texas Tech campus; one vote shall be accorded each organization and officer.

SECTION 3. The General Council shall meet twice a month unless otherwise stated.

SECTION 4. Scholastic eligibility for the members of the General Council shall be a 2.0 over-all grade-point average, as well as a 2.0 grade-point average for the preceding semester.

SECTION 5. If it is impossible for a General Council member to attend a meeting, it is required that she send an alternate from her organization with a written excuse to the secretary, the validity of which will be determined by the Executive Council.

SECTION 6. If any organization is not represented by either the regular representative or an alternate, the organization will be notified and a fine of \$1.00 shall be assessed and paid by the organization.

SECTION 7. Organizations which are not represented a total of three meetings during any one semester will be notified by the secretary of the Association that their representative is inactive, and they must send a new regular representative.

ARTICLE VII

Committees

SECTION 1. There shall be a nominating committee, an Executive Council, standing committees, and other committees which the General Council may require. Each committee shall have a chairman who is appointed by the Executive Council, and the members of the committees shall be selected by the chairman with the approval of the Executive Council.

SECTION 2. Standing Committees:

1. Dad's Day Committee
2. Women's Day Committee
3. President's Hostess
4. Howdy Party

ARTICLE VIII

Amendments

SECTION 1. The constitution may be amended at a regular meeting of the General Council of the Association of Women Students provided that the amendments are approved and passed by a two-thirds majority of the total membership of the General Council and approved by the sponsor(s). The amendments shall have been read at the General Council meeting preceding the one at which the vote is taken.

1. To promote and maintain high standards in the residence halls with regard to scholarship, moral integrity and group living, and
2. To promote and develop responsible leadership and citizenship in the residence halls, on the campus at large and in the community.

ARTICLE III

Powers

The Women's Residence Association shall operate under the powers and limitations set forth in this constitution.

ARTICLE IV

Membership

The membership of the Women's Residence Association shall consist of all the residents of Texas Tech women's residence halls.

ARTICLE V

Officers

SECTION 1. The officers of the Residence Hall Association shall be:

- a. President
- b. Vice President
- c. Secretary-treasurer
- d. Judiciary Chairman

SECTION 2. Duties of Officers

a. President:

1. Shall preside at all meetings of the Women's Residence Council and the Women's Residence Association.
2. Shall present periodic messages to W.R.C. concerning residence hall life, activities, standards, policy and government.
3. Shall appoint committees as provided in the W.R.C. constitution.
4. Shall execute all legislation passed by the W.R.C. for which she shall be responsible to W.R.C.
5. Shall act as liaison between the W.R.A., W.R.C. and campus organizations, the administration, the Housing Office and the community at large.
6. Shall be an ex officio member to all committees.

b. Vice President:

1. Shall preside in the absence of the president.
2. Shall serve as the W.R.C. parliamentarian.
3. Shall be responsible for the Women's Residence Association elections.
4. Shall be a member of the W.R.C. Executive Council.
5. Shall succeed to the presidency in case that office is vacated.

c. Secretary-treasurer

1. Shall take and keep the minutes of the W.R.A. and W.R.C. meetings.
2. Shall provide and distribute copies of minutes of all meetings to the members of W.R.C. and other residence hall personnel as directed by the president.
3. Shall serve on and attend all Financial Committee meetings.
4. Shall maintain a current record of all monies and make reports to W.R.C. as directed by the president.
5. Shall be a member of the W.R.C. Executive Council.
6. Shall be responsible for all correspondence of the W.R.A. and W.R.C.

d. Judiciary Chairman

1. Shall chair meetings of the hall Advisory Chairmen for the purpose of orientation and coordination between the hall Advisory Councils, the W.R.A., Judiciary Council and the W.R.C.
2. Shall attend all W.R.C. meetings.
3. Shall serve as the chairman of the Judiciary Council.
4. Shall serve as the W.R.C. representative to the Association of Women Students.

SECTION 3. Qualifications for Officers:

a. The President and Vice President of the

Women's Residence Council shall be elected President and Vice President of the Women's Residence Association. They shall be of junior or senior standing during their term of office, and shall have served on W.R.C. for at least one year. They have a 2.5 overall gradepoint average and a 2.5 average for the semester preceding their election. They must maintain at least a 2.0 average during their term of office. They shall be hall residents at the time of their election and during their term of office.

b. The Secretary-treasurer and the Judiciary Chairman shall have served one year as a member of W.R.C. or on a hall legislature or of a residence hall advisory council previous to their term of office. The gradepoint average shall be the same as for the president and vice president.

c. Other officers elected by W.R.C. will be from the Council membership and will have the same gradepoint average as required of other officers.

SECTION 4. Removal of Officers:

The President, Vice President, Secretary-treasurer and Judiciary Chairman may be removed from office by a 3/4 vote of the Women's Residence Council on the grounds of neglect, misconduct or excessive absence.

SECTION 5. Term of Office:

All officers shall serve a term of one year.

ARTICLE VI

The Women's Residence Council

SECTION 1. The purpose of the Women's Residence Council shall be to serve as the primary channel for discussion among living groups, to initiate and/or approve all regulations and policies which are applicable to all women residents and to provide for the general welfare of the resident hall student.

SECTION 2. The Women's Residence Council shall be composed of the elected officers of the Women's Residence Association and the presidents and vice presidents of all the Texas Tech women's residence halls. Each member and officer with the exception of the president shall have one vote. Each member shall maintain the same gradepoint as required for officers.

ARTICLE VII

The Judiciary Council

SECTION 1. The purpose of the Judiciary Council shall be:

- a. To interpret the regulations and policies of the Women's Residence Association, Women's Residence Council and the individual halls.
- b. To hear and rule on appeals referred to it by the hall's advisory councils or an individual student.
- c. To render advisory opinions when requested through regular established channels of the residence halls or University.

SECTION 2. The Judiciary Council shall be composed of the Chairman and one representative of each undergraduate class to be appointed by the Chairman with the advice and consent of the Women's Residence Council. The Judiciary Chairman of the Women's Residence Association shall serve as the chairman of the Judiciary Council.

SECTION 3. The procedures of the Judiciary Council shall be determined by the Council, put in written form and a copy prepared and delivered to each hall advisory council and to the Women's Residence Council.

a. A secretary shall be chosen by the

Constitution of the Residence Hall Association, The Women's Residence Council

ARTICLE I

Name

The name of this organization shall be the Women's Residence Association of Texas Technological College.

ARTICLE II

Purposes

The purpose of the Women's Residence Association shall be:

Judiciary Council who shall keep the records of the council.
b. Any decisions or interpretations by the Council shall be delivered to the residence hall advisory council chairman, the residence hall counselor and any person involved directly in the case within ten days.

ARTICLE VIII Advisor

The advisor of the Women's Residence Association and Women's Residence Council shall be a member of the Residence Hall Supervisory Staff for Women. She shall be elected in the spring by the retiring Women's Residence Council for the following year. The advisor shall be an exofficio member of the

Women's Residence Council and shall serve in an advisory capacity.

ARTICLE IX Amendments

Amendments to this constitution shall be ratified by a two-thirds vote of the Women's Residence Council and two-thirds of the women's hall legislatures. (Each hall having one vote on final ratification.)

ARTICLE X Ratification

This constitution shall be in force and effective immediately upon approval of nine of the Women's residence halls legislatures and a two-thirds vote of the Women's Residence Council.

Landmarks and Traditions of Texas Tech

The Double "T" Bench

The Double "T" Bench, located on the Administration Building Green, was donated by the Senior Class of 1931. Only upperclassmen are allowed to sit on this bench.

Memorial Circle

Memorial Circle, located in the center of the campus, was dedicated in 1948 by the Texas Tech War Veterans' Association to all whose service has brought honor to the College and the Country.

Will Rogers

"Riding into the Sunset" is the name of the statue of Will Rogers mounted on his horse, Soapsuds. The memorial, located on Soapsuds Pavilion, was presented to Texas Tech by the Amon G. Carter Foundation in 1948.

Jones Stadium

Clifford B. and Audrey Jones Stadium was dedicated on November 29, 1947, in honor of the past president of Texas Tech. The stadium has since been enlarged and now seats over 42,000 fans.

Southwest Conference Circle

The site of all Tech pep rallies and bonfires, the Southwest Conference Circle was furnished by the Saddle Tramps, Circle K, and Alpha Phi Omega. All conference schools are represented by mosaic tiles of each school's mascot.

The Red Raider, Our Mascot

The idea of the Red Raider galloping around the football field prior to Texas Tech games was conceived in 1954, and he made his first appearance at the Texas Tech-Auburn game in the Gator Bowl. The Red Raider traditionally rides a black horse.

The Victory Bells

The Victory Bells, located in the east tower of the Administration Building, were donated by the Class of 1936. The large bell weighs 900 pounds; the smaller, 300. They are rung for thirty minutes after every football or basketball victory.

"Banging Bertha" is the bell carried by Saddle Tramps to all football and basketball games. It was donated to the Tramps by the Santa Fe Railroad.

School Songs

Fight Song

Fight, Raiders, Fight! Fight, Raiders, Fight!
Fight for the school we love so dearly!
You'll hit 'em high, you'll hit 'em low,
You'll push the ball across the goal.
Tech, fight! Fight!
We'll praise your name, boost you to fame,
Fight for the Scarlet and the Black.
You will hit 'em, you will wreck 'em!
Hit 'em! Wreck 'em!
Texas Tech,
And the Victory Bells will ring out—

Matador Song

Fight, Matadors, for Tech!
Songs of love we'll sing to thee.
Bear our banners far and wide.
Ever to be our pride.
Fearless champions ever be.
Stand on heights of victory.
Strive for honor evermore.
Long live the Matadors.

