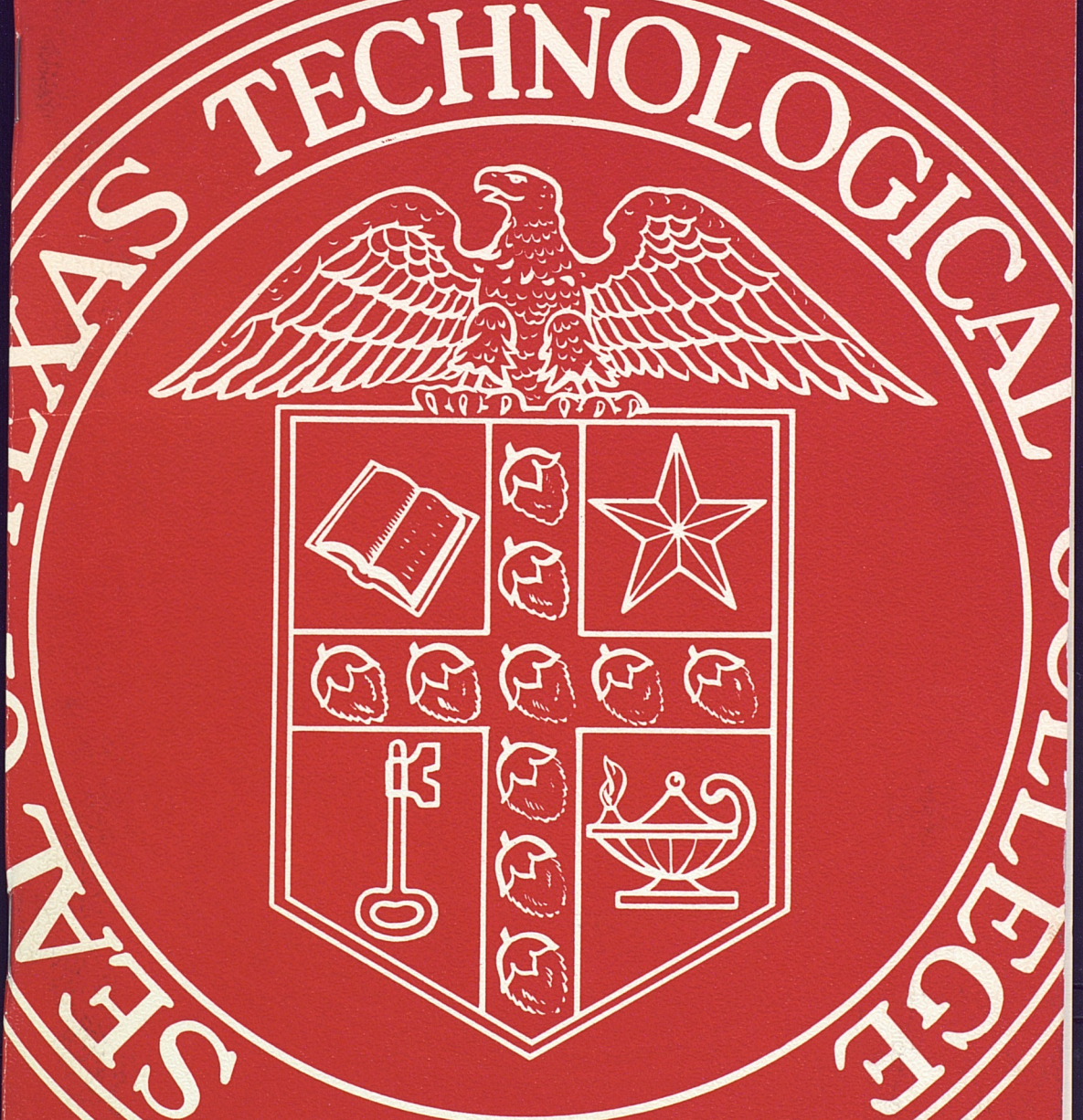


# TECH TIPS



*A Handbook for Women Students*

1965 - 1966



THE ASSOCIATION OF WOMEN STUDENTS  
and  
COLLEGE PANHELLENIC ASSOCIATION  
of  
TEXAS TECHNOLOGICAL COLLEGE

present

*TECH TIPS*

*A Handbook for Women Students*  
1965 - 1966



AWS Editor ..... Nelda Laney

Chairmen

Residence Halls ..... Genelyn Cannon  
Panhellenic ..... Rebecca Wilson



## Contents

DEAN'S LETTER .....	3
AWS EXECUTIVE COUNCIL .....	4
ASSOCIATION OF WOMEN STUDENTS .....	5
AWS AND YOU .....	6
President's Hostesses .....	10
Angel Flight .....	11
CorpsDettes .....	12
Major-Minor Club .....	13
Home Economics Association .....	14
Town Girls Club .....	15
Women's Service Organization .....	16
WOMEN'S RESIDENCE HALLS .....	17
Women's Residence Council .....	18
A Guide to Residence Hall Living .....	19
Clement Hall .....	25
Doak Hall .....	26
Drane Hall .....	27
Gates Hall .....	28
Horn Hall .....	29
Hulen Hall .....	30
Knapp Hall .....	31
Wall Hall .....	32
Weeks Hall .....	33
West Hall .....	34
HONORARIES .....	35
Alpha Lambda Delta .....	37
Junior Council .....	37
Mortar Board .....	38
Phi Gamma Nu .....	38
Phi Upsilon Omicron .....	39
Tau Beta Sigma .....	39
COLLEGE PANHELLENIC .....	41
National Panhellenic Creed .....	42
An Introduction to College Panhellenic .....	43
What Is Panhellenic? .....	44
Rush Registration Instruction .....	50
Alpha Chi Omega .....	51
Alpha Phi .....	52
Chi Omega .....	53
Delta Delta Delta .....	54
Delta Gamma .....	55
Gamma Phi Beta .....	56
Kappa Alpha Theta .....	57
Kappa Kappa Gamma .....	58
Phi Mu .....	59
Pi Beta Phi .....	60
Sigma Kappa .....	61
Zeta Tau Alpha .....	62
APPENDIX .....	63
Constitution and By-Laws of AWS .....	63
AWS Activities Point System .....	65

## Introducing . . .



Hello there,

I am so happy that you are going to be with us this year. My office is in the Administration Building. I hope that you will drop by to see me and the members of my staff.

We are looking forward with a great deal of pleasure to knowing each one of you personally.

Sincerely,

Florence Phillips  
Dean of Women



## AWS Executive Council



*Top row, left to right: Suzanne Hightower, AWS representative; Jenny Matthews, president; Marcia Winkelman, third vice president; Carolyn Hines, judiciary chairman. Bottom row, left to right: Sue Scovell, treasurer; Joy Cox, first vice president; Sandra Harris, secretary; Rita Reynolds, second vice president.*

Dear Miss Techsan,

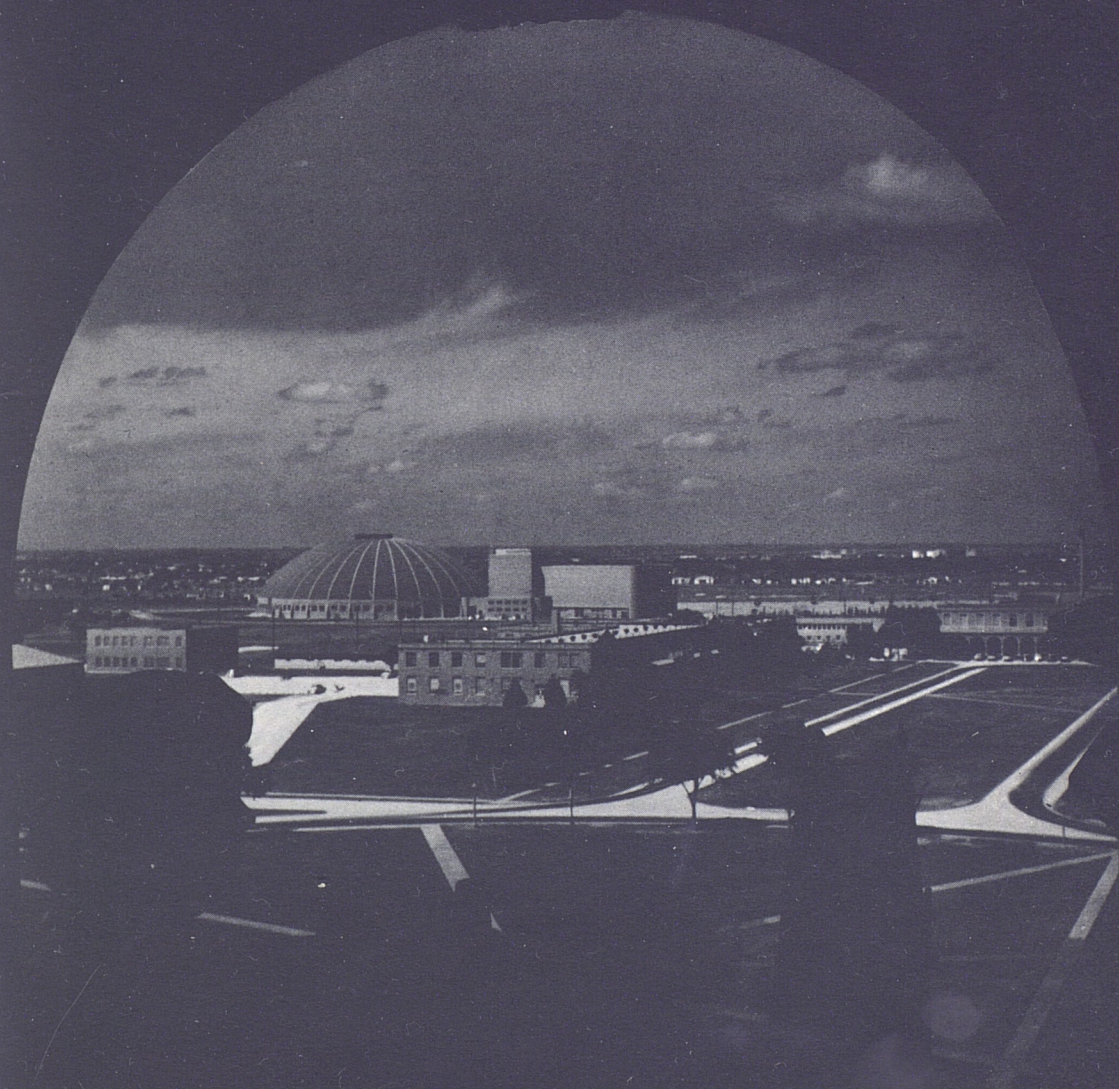
I want to personally welcome you to Texas Tech on behalf of the Association of Women Students. You are most fortunate in that you have the privilege of attending one of the outstanding colleges in America. You will find dedicated teachers, trained counselors, cooperative administrators, and friendly students who are ready and anxious at all times to guide and assist you in every way possible.

As a member of the 1965-66 student body, you will be a part of Tech's dynamic growth, share its spirit and enthusiasm, and take part in its many activities.

Each year of your college experience will provide you with countless wonderful experiences, and create many lasting friendships. AWS was formed to serve you, and we invite you to attend all of its meetings. We hope that we may be of service to you in the coming year, and we hope that this year may be one of your happiest.

Jenny Matthews  
President, AWS

# AWS





## AWS And You . . .

### A TECHSAN'S LIFE

College means a number of things to you. It means fun-times, work and recreation, plus new friendships and new ideas. You are in for an enriching experience. And you'll want to take advantage of all sides of college — mental, social and spiritual.

Many individuals and organizations are eager to help you, especially AWS (Association of Women Students), WRC (Women's Residence Council), and Panhellenic Council.

The college campus offers so many avenues of activity that it is easy to lose sight of our primary objectives and become completely "wrapped up" in extra-curricular activities. So, remember, study comes first.

The student has few regulations outside of class hours, and must learn to budget her own time. A daily schedule allotting time for study and relaxation will be of valuable service and you will gain real satisfaction, knowing that you have given the necessary time and effort to your studies.

A person with the ability to concentrate is well on the road to good study habits. Tips in developing this ability are: divide your study hours into short concentrated periods; keep your mind on your work; read rapidly; allot each piece of work a certain time and try to complete it in that time; work in surroundings conducive to concentration.

If you and your roommate study together in your room, it is wise to slip a "Do Not Disturb" sign over the door knob. As a freshman, 9:00 p.m. hours will help you to give the proper time to studies.

By practicing good study habits and reviewing thoroughly before exams, you send home the grade reports that will make you and your parents proud. So study hard, then relax.

College is filled with things to do and people to meet. Dating, campus organizations, departmental clubs, dorm chatter, cokes in the Union (Student Union Building) — all these are avenues of relaxation.

### A KEY TO CLOTHES

Now, what to wear—and when? Remember that simplicity is the key word to the Techsan's taste in clothing. For your convenience and easy access, note the Techsan Clothes Chart (Page 7).

Other incidentals are brunch coat or short house coat; slacks; bedroom slippers; cottons for fall and spring; and a heavy coat for winter. The West Texas wind doth blow — and we usually have snow and rain, so bring overshoes. Incidentally, headscarves are a must at Tech to protect curls from Old Man Weather.

Be sure to bring a white dress, too. Each spring AWS sponsors Women's Day and all coeds wear white.

The Techsan wears just enough make-up to give her a "wide-awake" look at the 8 A.M. class, and always dresses to suit the occasion. To complete the picture, she conducts herself properly, remembering that she represents her college.

### THE GENTLE ART

Equally important to the Tech coed as being well-groomed and well-dressed are manners.

We have learned that one of the best ways to get a lot of introductions is to give a lot of them. In order to introduce and meet people with poise, you will need to practice the techniques. If you want to brush up on "how and when," here are some tips that may prove beneficial.

## A TECHSAN'S CLOTHING CHART

Event	Dress	Hat	Shoes	Handbag & Gloves
Classes	Skirts & sweaters, blouses; wool or cotton tailored dresses	Scarf, if needed	Loafers, flats	Handbag, gloves if needed for warmth
Town	Tailored dress suit or sweater & skirt	No	Low heels	Both
Dinner Date	Date dress	No	Heels	Both
Informal Dances	Tailored dress or sweater & skirt	No	Type optional	Small bag & gloves
Formal Dances	Long or short length formal, or after-five dress	No	Evening; heels, always with short formals	Evening bag & gloves
Banquets	Formal or dressy dress; depends on invitation	Optional; depends on type of dress	Heels	Both
Picnics	Knee length shorts; slacks, jeans, pedal-pushers, skirts & sweaters, culottes	Scarf if needed	Loafers	No, unless gloves are needed for warmth
Spectator Sports	Tailored clothes or school clothes	No	Heels or loafers, depending on dress	Optional
Cultural Events	Tailored suit or date dress	Optional	Heels	Both
Teas & Receptions	Dressy dress or suit	Yes	Heels	Both, remove gloves for refreshments
Church Services	Best <u>daytime</u> dress or suit	Yes	Heels	Both
Hall Cafeteria	Dress; skirt & sweater	No	Loafers, flats	No

Always mention the woman's name first if a man and a woman are being introduced. Men always rise for introductions. Women rise only when being introduced to an older woman, or when they wish to show special respect to a distinguished person. A woman may shake hands with a man, but must remember to extend her hand first.

When introducing a large group, mention names of men and women in the order they are seated or standing. In acknowledging an introduction, it is courteous to repeat the name (helps you remember it, too) and simply to say "Hello" or "How do you do." A smile can express your friendliness better than words.

Friendliness on our campus extends to the faculty and older people. You can't underestimate what your courtesy and kindness to all older people will do for you.

Remember, as you're packing for Texas Tech, to put in a smile and a friendly spirit, and take them out first when you arrive.

## THE COMMON GROUND

One more phase of college deserves special mention — spiritual growth. Many religious groups, affiliated with Lubbock churches and located off-campus, offer worship, study, and fellowship. These are listed in the General Catalog under mutual interest organizations. You are invited to attend the group of your choice.

This last phase of your growth is best expressed in the AWS Women's Creed — "that of charity toward others and service to all."

## AWS IS FOR YOU

When you enroll at Texas Tech, there is one organization of which you as a woman student automatically become a member. This is the Association of Women Students — known more simply as AWS.

The purpose of AWS is to help you and other Tech coeds to get the greatest benefits from college life by promoting



unity and fellowship among women students and by providing opportunities for leadership in worthwhile activities on campus. AWS acts as a coordinating body of all women's organizations in setting the standards for living and working together on campus.

## IAWS

Tech's AWS is a member of a large national association — the Intercollegiate Association of Women Students. Its membership is composed of women's governing units in over 100 colleges and universities from coast to coast. IAWS was the first to establish a national association of student governments. The foundation for this organization was laid in 1913, and Tech was the first college in Texas to become a member of IAWS.

The purposes of IAWS are to foster the exchange of ideas and information on subjects of mutual interest to the member schools; to encourage a growing awareness of the responsibilities of women students in local, national and international affairs; and to work for the improvement of women's governing groups.

## AWS COUNCIL

Tech's AWS is governed by the AWS Council. This Council is composed of eight officers elected by the women on campus, one representative from each women's organization, and a representative from each class. The Executive Council, elected by the women students, is comprised of eight officers: president, first vice president, second vice president, third vice president, secretary, judiciary chairman, and IAWS representative. To understand exactly how AWS works, you are invited to attend any regularly scheduled Council meeting.

## THE JUDICIARY COUNCIL

The agency for interpreting AWS regulations and the activity point system is the AWS Judiciary Council. Cases referred by Advisory Council and those involving infraction of general college regulations are handled by the AWS Judiciary Council. The Council is composed of three students of junior or senior classification and one student from a residence hall Advisory Council. The Chairman of AWS Judiciary is an elected AWS officer.

## PLANNED ESPECIALLY FOR YOU

"Never a dull moment . . ." and so it is with AWS. Its ever-expanding activity program includes:

**BIG SISTER-LITTLE SISTER PROGRAM** — You will be adopted as a little sister long before you arrive on campus. Your big sister should write you during the summer and be here in the fall to help you get acquainted with campus life and to give you the benefits of her college experience.

**HOWDY PARTY** — This event is scheduled as a "get-acquainted" period during orientation week. All the women leaders on campus will be at this party to welcome you and tell you about extracurricular activities and women's organizations at Tech.

**DAD'S DAY** — During the fall Dads are honored by a full day of activities including the football game and a welcoming coffee. AWS Dad's Day Committee plans the program.

**PENNY - A - MINUTE NIGHT** — Here's your chance to stay out one hour past closing hours—at the rate of a penny a minute. AWS usually sponsors two such nights each year.

**WOMEN'S DAY** — As a recognition day for women on our campus during the spring, you are urged to wear white to commemorate this special day. Tech's Outstanding Woman of the Year and Faculty Woman of the Year are elected and presented at the Women's Day Banquet that night.

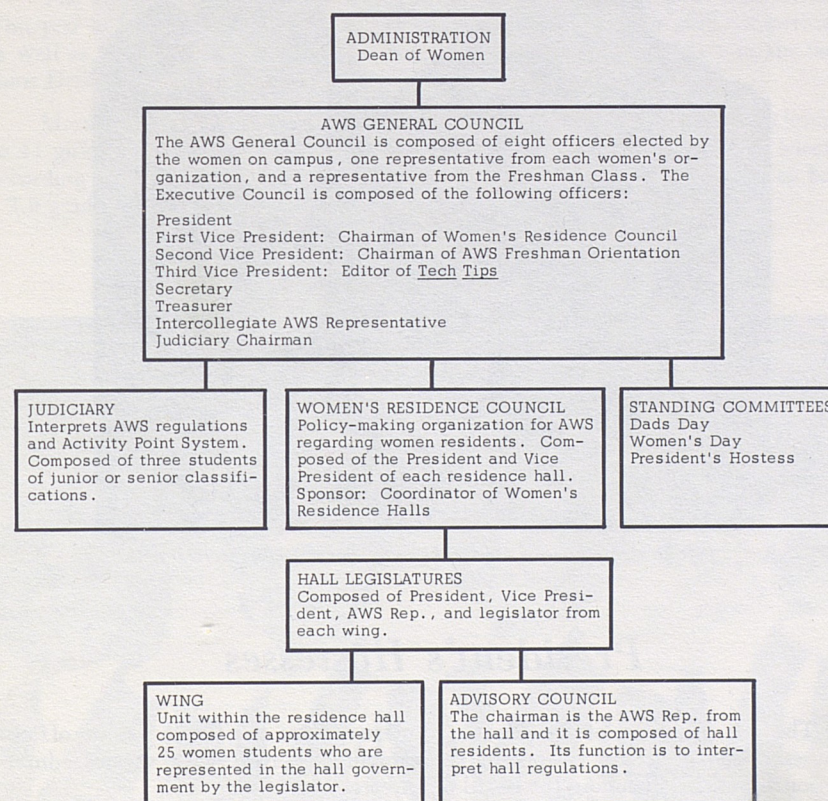
Other recognitions include installation of AWS officers for the coming year, introduction of the new officers and

legislators in the residence halls and scholarship recognitions.

## AWS ACTIVITY SYSTEM

In order to distribute the major offices and responsibilities of individual students more evenly, AWS has an activity point system. (See Appendix) The system is based on time consumption rather than prestige.

## AWS ORGANIZATIONAL CHART







*Left to right: Eugenia Odell, chairman; Jane Deaver, secretary.*

## *President's Hostesses*

The 32 members of President's Hostesses serve as Texas Tech's official hostesses. They welcome visitors to the campus and assist with various administration functions, including the Board of Director's luncheon.

These upperclasswomen are chosen each year by the AWS executive council and sponsors, President Goodwin and Vice President Pennington.

Members are well informed about the campus and answer questions put to them by visitors and official guests.

One of the group's projects is publishing a Tech directory and general reference booklet.

## *Angel Flight*

The Texas Tech Angel Flight is a girls' drill team and social organization sponsored by the Air Force ROTC Arnold Air Society.

Angel Flight is a national organization designed to create and promote interest in the Air Force program, on and off campus. The Tech Angels participate in many campus activities such as the annual Homecoming Parade, Air Force ROTC Field Day, registration, Air Force commissioning service, and various athletic and social events. In regard to off-campus activities, the Angels participated in Founder's Day at Reese Air Force Base and helped sponsor a Christmas party for the Lubbock Orphans' Home. Eager to make money for special trips and events, the Angels held two car washes and served as card caddies for a regional bridge tournament.

The Angels have always come out as winners in the Area Drill Competition. This year in Fort Worth, they made a clean sweep, placing first in drill competition, as well as best drill commander. The Angels also received fourth place in the Sunshine Drill Meet held in Tucson, Arizona.

Meetings are held on Tuesday and Thursday afternoons. Membership is limited to 41 girls. Vacancies are filled in the fall and spring try-outs. The girls are selected according to ability, poise, character, and appearance. Angels are required to have a 2.0 grade average each semester.



*Left to right: Jane Sosnowy, commander; Barbara Birmingham, drill master; Mary Carolyn Hall, AWS executive officer; Sherrian Tarlton, national angelette officer.*





*Left to right: Patricia Hayes, comptroller; Joy Cox, commanding officer; Rebecca Wilson, executive officer; Ann Boyd, drill commander.*

## CorpsDettes

Army CorpsDettes of Texas Tech is the newly-organized girls' drill team sponsored by Scabbard and Blade and the Army ROTC. Charter members were selected during the fall semester of 1964.

CorpsDettes was founded to promote activities and interest in the Army ROTC program. The members of the group serve as official hostesses for ROTC social functions, conduct various service projects, and participate in competitive drills.

The uniform worn, which is of the traditional Army green, is a straight skirt and semi-fitted jacket complemented by gold ascot and braid and a green beret worn at a slight angle.

Members, not to exceed 45, are selected at the beginning of each semester on the basis of marching ability, poise, character, and general appearance. A 2.0 grade average must be maintained each semester. Meetings are held on Tuesday and Thursday afternoons. Uniforms are worn each Thursday and for special events.

## Major-Minor Club

Welcome to Texas Tech and to the Women's Physical Education Department.

The Major-Minor Club is a professional and social organization for women students majoring, minoring and specializing in physical education.

The purposes of the club are to develop a professional attitude toward Health, Physical Education, Recreation and related fields, to develop character traits of its members that will promote professional growth and develop a better and closer relationship among its members, and to promote the development of the profession by providing leadership and service in the Club, College, and community.

Officers are: Barbara Lain, president; Paulette Fischer, vice president; Connee Brown, secretary; Carol Hunter, treasurer; Carra McNamara, reporter-historian; Kay Richmond, social chairman; Gwen Botik, AWS representative; and Janice Fauske, BSO representative.



*Left to right: Paulette Fischer, vice president; Gwen Botik, AWS representative; Barbara Lain, president.*





Left to right: Rebecca Pena, AWS representative; Marge Eubank, president; Ross Lynn Spradling, vice president.

## Home Economics Association

The doors are open for all Home Economics majors to Texas Tech's College Chapter Section of the American Home Economics Association. This professional club provides opportunities to learn about the world of Home Economics, the world of deeper knowledge, and the world of exciting fun.

We're off to a good start in September with our "Howdy Party" where we begin new friendships with entering freshmen and renew old ones. Other spotlights of the year include our money-making project, Awards Banquet, and Open House.

For the past three years our money-making project has been to serve at various banquets. Such hostessing has proved to be an excellent means of making money for the chapter section, as well as providing fun.

Recipients of scholarships and the Outstanding Sophomore are announced at our annual Awards Banquet.

In times past, the climax of the year's program has been the Open House. However, last year we entertained one thousand high school FHA girls by giving them a guided tour of the campus, including our own School of Home Economics.

Much awaits you beyond those doors. Why not turn the knob and become an active participator and contributor to making an even better Texas Tech through an even better School of Home Economics?



Left to right: Katherine Cartwright, vice president; Sharon Mangum, president; Glynda Meadows, AWS representative.

## Town Girls Club

Girls who live off-campus sometimes worry about keeping in touch with campus affairs. Outside the classroom they may have little opportunity to take part in the many activities that are a part of college life. Town Girls Club was organized in 1953 to remedy this problem. Meeting at weekly luncheons in Tech Union, these girls find many common interests and catch up on campus news.

Members of the faculty and administration are frequent luncheon guests, and their informal talks help the girls build closer ties with the college. Programs are scheduled that make use of talent within as well as outside of the club.

Any girl who lives off-campus may become a member of Town Girls Club by attending any of the meetings. A get-acquainted coke party and other first-of-the-year events are planned so that girls who live in Lubbock and other cities may meet and establish friendships.



## Women's Service Organization

Women's Service Organization began in 1959 as a committee of the Association of Women Students and gained campus recognition as an independent group in 1962. To emphasize the steady growth of WSO, recent statistics show that 50 members supply more than 1000 woman-hours of work each semester.

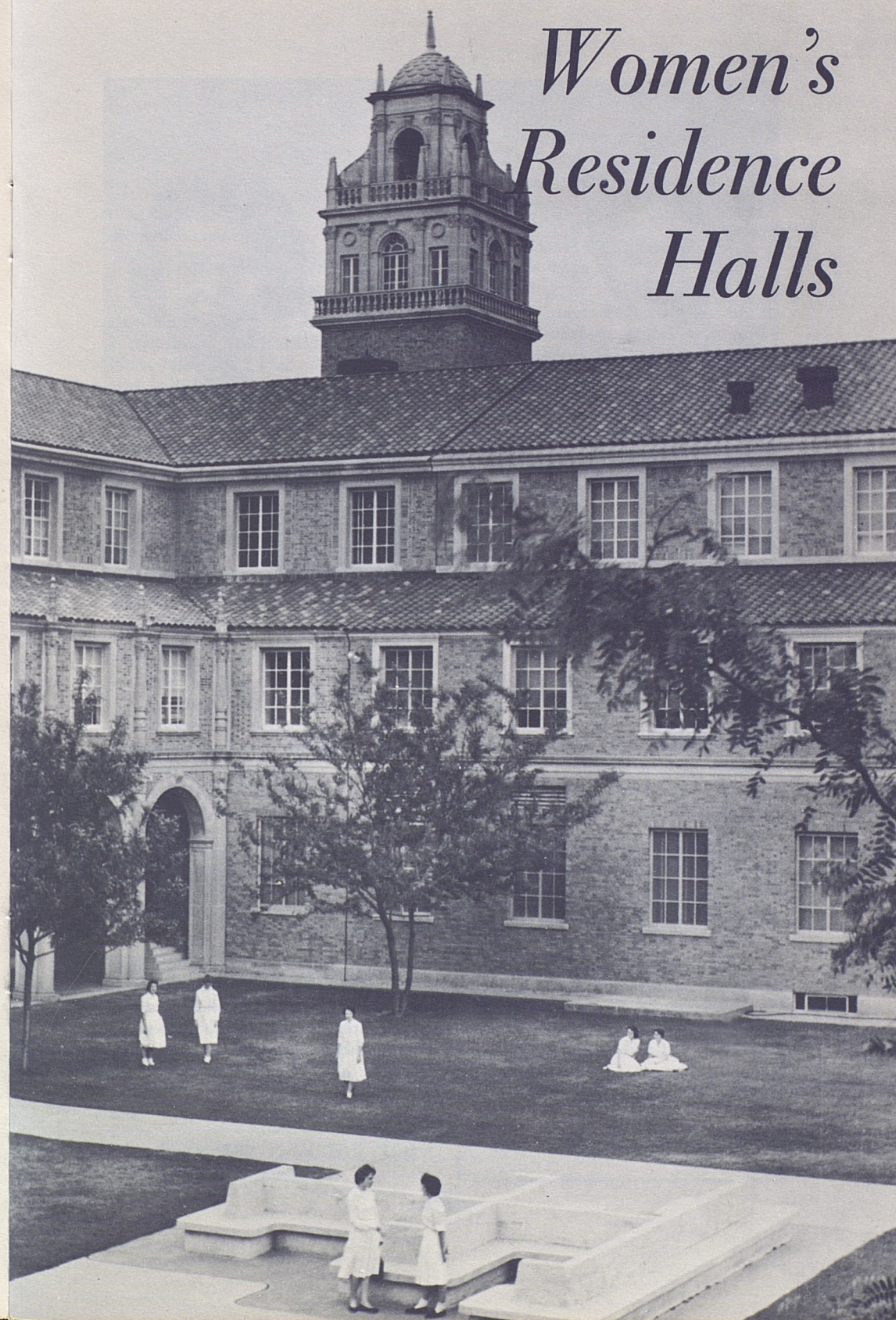
Now in its seventh year of service to Texas Tech and Lubbock, WSO expresses its principles of Friendship, Service, and Equality through numerous projects including homecoming activities, luminarias, Carol of Lights, campus elections, Mile of Pennies for World University Service, annual bicycle race, record library for KTXT-FM, and community charity drives.

Pledgeship begins with the traditional Big Sister-Little Sister Breakfast and continues for eight weeks. Pledges become acquainted with actives through joint projects and signature appointments. Ten service hours plus a 2.0 grade average are required for initiation.



Left to right: Anne Faith, president; Fannie Messec, vice president; Marilyn Treadwell, pledge trainer; Kathleen Brown, AWS representative.

## Women's Residence Halls







Left to right: Joy Cox, president; Norma Sparks, secretary; Nancy Rebecca Slover, treasurer.

## Women's Residence Council

The Women's Residence Council, policy-making organization for the women's residence halls, is composed of the president and vice president from each of the halls. The first vice president of AWS serves as president of the Council and serves as the liaison between the halls and AWS.

Acting as official representatives of their halls, WRC members discuss questions of student government and regulations which arise in the residence halls and make appropriate recommendations to AWS for changes and revisions. WRC is an important communications link for women students; it promotes an effective cultural program and an atmosphere conducive to academic learning.

WRC sponsors the "Carol of Lights" each year in which the residence halls' choirs and other student choral groups sing Christmas carols to mark the traditional turning on of the lights decorating many of the campus buildings during the holiday season. Scholarship trophies are presented by WRC each year to the upperclass hall and to the freshman hall with the highest grade-point average.

WRC also sponsors a workshop each spring for all the newly elected officers of all halls, and for the legislators of the new women's halls.

## A Guide to Residence Hall Living . . .

### BE IN THE KNOW

So you're moving into a Tech residence hall for the first time. No doubt there are many questions you'd like answered, so glue your eyes to the next few pages.

First of all, you're concerned about furnishing your room. If you are to be a resident of Doak Hall, Drane Hall, Horn Hall, West Hall, or Knapp Hall, you will find that each room has one desk, two chairs, one chest of drawers, two beds, and two closets. If you are to be a resident of Weeks Hall, Wall Hall, Gates Hall, Hulen Hall, or Clement Hall, you will find that each room has two desks, two chairs, two chests of drawers, two beds, and two closets. (The difference in the number of desks and chests of drawers is due to the fact that in these last halls mentioned, all of the furniture is built in.)

Most girls wait until their arrival at Tech to choose curtains and bedspreads, for then they know the color and location of their rooms. However, if you plan to bring curtains from home, you will need to know the following information.

In Doak Hall, Drane Hall, Horn Hall, Knapp Hall, West Hall, and Weeks Hall:

- (1) Each room has two windows.
- (2) Each window will require a separate set of curtains.
- (3) The measurements of each window are as follows:

Hall	Width	Length
Doak	43 <sup>3</sup> / <sub>4</sub> x	69 inches
Drane	41 x	68 inches
Horn	40 x	66 inches
Knapp	40 x	66 inches
Weeks	34 <sup>1</sup> / <sub>2</sub> x	68 <sup>1</sup> / <sub>2</sub> inches
West	43 <sup>3</sup> / <sub>4</sub> x	69 inches

In West Hall, Gates Hall, Hulen Hall, and Clement Hall:

- (1) Each room has two windows.
- (2) These windows are not separated by a partition and therefore will require only one set of curtains. (These curtains will need to be wide enough to cover both windows.)
- (3) The total measurements of the two windows are as follows:

Width	Length
72 <sup>3</sup> / <sub>8</sub> x 54 <sup>3</sup> / <sub>8</sub> in.	

Walls are made of plaster material, thus necessitating the use of curtain rods which do not require nails. Suction-cup rods may be purchased at Lubbock department stores.

Some suggested objects to bring from home include desk light, pillow, broom, mop, bulletin board, radio, record player, throw rugs, alarm clock, iron, and ironing board. If you're living in Weeks, Wall, Gates, Hulen, or Clement, you will not need the desk light, bulletin board, or ironing board, as they are built in. TV's, pets, and firearms are NOT allowed in the residence halls.

### HERE'S HOW IT'S DONE

Your MAIL is put in a mailbox assigned to you when you register in the residence hall. Office girls put up the mail which is delivered once a day. Outgoing mail is collected at this time.

\_\_\_\_\_

\_\_\_\_\_

Jane Smith  
Wall 332  
Texas Tech  
Lubbock, Texas 79406



You will be notified by the Campus Post Office in the Administration Building if you have an insured package, registered letter, etc. Packages which are not registered are delivered to the hall.

Mail addressed to you should include YOUR residence hall, YOUR box number, and zip code—79406.

The DINING HALL is open for meal service as follows:

	Mon.-Sat.	Sun.
Breakfast	7:00-8:00	8:00-8:45
Lunch	11:15-1:15	12:00-1:00
Dinner	5:15-6:30	No meal

There are LAUNDRY and drying rooms in each women's hall with automatic washers and dryers for your use. A quarter is charged to use washing machines and a dime for rotating dryers.

All needed REPAIRS should be reported to the office. Each hall has its own "Mr. Fixit" to make repairs and fill such requests as replacement of electric light bulbs, etc.

A large STORAGE room is provided in each hall where trunks and luggage are stored. Check with your hall office for the key.

PHONE SERVICE is provided for every room. Your number is an extension of the college number: PORTER 2-8811. The charge is included in your room and board account. All prepaid long distance telephone calls and telegrams must be made from pay stations in the buildings. Telephone service is provided from 7:00 A.M. to 11:00 P.M. daily. After 11:00 P.M. an operator, who is in attendance all night, will handle calls of an emergency nature.

## RESIDENCE HALL GUESTS

Students may have guests in the residence halls only on Friday and Saturday nights except by special permission given by the Coordinator, Women's Supervision; however, mothers are wel-

come any time. All overnight guests must register in the hall office and a guest fee (with the exception of mothers of residents) of 50 cents is charged each guest. Guests maintain the hours of their student hostess. The hostess is responsible for the conduct of all guests and is also assigned any late minutes her non-resident guest might accrue. Guests sign in and out of the residence hall on a guest sign-out sheet.

When girls are guests in another hall, the same procedure for signing out is to be observed as for any overnight in Lubbock. Resident students, while guests in other halls, are responsible for their own late minutes and are charged a 50 cent guest fee.

## RESIDENCE HALL ASSOCIATION

Every women's hall resident is automatically a member of the residence hall association, which has as its purpose, as stated in the constitution, "to prepare each student for active and co-operative citizenship through participation in democratic self-government."

Texas Tech's administration believes in student government and is glad to extend the privileges of self-discipline as far as the students themselves are capable of accepting the responsibilities which this implies.

AWS dues of \$1.00 are paid as the woman resident checks into the residence hall. At the same time, social dues, which may range from \$1.50 to \$3.50, are paid to the Residence Hall Association.

## RESIDENCE HALL COUNSELORS

Each residence hall has one adult supervisor, the hall counselor, who is professionally trained for her job. The counselor is responsible for administering a smoothly run hall with an atmos-

phere conducive to study and for counseling with the girls in the hall whenever the occasion arises. The counselor can be reached at any hour by calling the college number and asking for the desired residence hall.

## RESIDENCE HALL LEGISLATURE

The official governing body of each hall is the legislature, composed of girls selected each spring from the membership of the residence hall association. They live in specified rooms on each wing of the hall and represent the viewpoint of the girls on that wing in legislature meetings and are responsible for the welfare of their particular wing in the hall. Legislators are the key link in communicating information from AWS, the administration, and the dorm legislature.

Legislature and wing meetings are held every two weeks. All residents are to attend wing and hall meetings.

## THE ADVISORY COUNCIL

Advisory Council is the agency through which the rules of the hall are interpreted. This group advises the girls on hall regulations and policies. In each hall it is set up under the hall's student government. The purpose is to hear cases of girls who have broken hall or AWS regulations. The Council has the responsibility to decide on the restrictions of a student's social privileges.

## RESIDENCE HALL REGULATIONS

For safety and service, students are required to sign out whenever they are to be out of the hall after 7:00 P.M. Each girl must sign in and out for herself. If an instance arises, however, in which the girl has failed to sign out,

she may call her counselor or her hall office to sign her out. No hall doors are to be opened before 6:30 A.M. and side doors are to remain locked after 7:00 P.M.

## A. REGULAR CLOSING HOURS ENTERING FRESHMEN (until second semester)

Mon.-Thurs. 9 P.M.	Friday 12 P.M.	Saturday 1 A.M.	Sunday 11 P.M.
-----------------------	-------------------	--------------------	-------------------

## UPPERCLASSWOMEN

10:30 P.M.	12 P.M.	1 A.M.	11 P.M.
------------	---------	--------	---------

## SENIORS

11 P.M.	12 P.M.	1 A.M.	11 P.M.
---------	---------	--------	---------

Exception: There will be NO senior hours on wing meeting nights.

In order to be classified for these hours a sophomore must have 32 hours with 64 grade points; a junior must have 64 hours with 128 grade points; and a senior must have 96 hours with 192 grade points.

## B. WEEKEND AND OVER-NIGHT SIGN OUTS

A general permission card signed by your parents must be on file in the residence hall office before you are permitted to sign out overnight. It is each student's responsibility to know the permissions granted her by her parents.

Weekend nights are Friday and Saturday nights. Students do not spend week nights out of town or at home except in an emergency and with special permission from the hall counselor and the student's parents; special permission is required if the specific instance is not stated on the general permission card. All special permissions must be addressed and sent directly to the counselor from the parents. All sign outs must be approved through the hall office, and each girl is responsible for making certain that her sign out process is complete. Whenever a girl spends the night out of the dormitory, a post card stating where she is going is sent to her parents by the residence hall counselor; each girl is to go to the



place to which she has signed out. Misinformation on any of these records could constitute a falsification of records.

The out-of-town sign-out sheet (white one) is to be used when girls are leaving town for the day and returning to the hall before closing the same day. The sign-out sheet must be approved by the counselor or her official representative. The sign-out is checked with your permission card before approval is granted. When the sign-out is approved, it becomes an official record.

#### (1) WEEKEND OUTSIDE LUBBOCK

You may fill out weekend sign-out slips in the office during the day until 8 P.M. Sign-outs must be filed by the student in the box provided for this record. (A sign-out sheet for either a weekend outside of Lubbock or a weekend in Lubbock should be completed by Thursday night at closing time.)

#### (2) WEEKEND OR OVERNIGHT IN LUBBOCK

Fill out form in hall office for Lubbock sign-outs before 4 P.M. of the day you are to leave so that your hostess may be contacted for confirmation of the invitation. Students may stay only with families or married couples in Lubbock. Students must make sure the hostess has been contacted and her sign-out card approved by the residence hall and filed by the student before she leaves. Freshmen are permitted one week night, Sunday through Thursday, per semester in Lubbock. Upperclasswomen have three week nights per semester. Again, *girls must go to their designated destination.*

#### (3) OVERNIGHTS FOR LUBBOCK FRESHMEN WHO ARE HALL RESIDENTS

Lubbock freshmen who are hall residents are allowed one regular week night out in town a semester plus only three week nights a semester at home.

(4) A girl is always permitted to stay in a hotel or motel with her own parents, provided one of them signs for her at the residence hall. She may also stay with any married relative and/or friend's parents if she has her parents' written or telephoned permission directly to the hall counselor and if the relatives or friend's parents also sign for her at the residence hall. Any exception to the above must be taken up with the Coordinator of the Women's Residence Halls.

#### C. RETURN FROM VACATION OR WEEKEND

All students return to the hall from an official college holiday or weekend by 11:00 P.M. Exceptions to this rule must be discussed with the counselor. If an emergency arises and the student is delayed, she should notify her counselor of her whereabouts immediately. It is suggested that a girl allow two extra hours of traveling time to take care of any unforeseen difficulties.

#### D. SPECIAL PERMISSION

Women residents may attend all-college academic programs, plays, concerts, lectures, and athletic events.

Women residents may attend any program sponsored by the following civic organizations:

Civic Lubbock  
Lubbock Symphony Concert Association  
Lubbock Theatre Centre  
Lubbock Community Concerts Association

When the event lasts past the regular closing hours, the student is expected to remain until it is over. For events held on campus, she must return to the residence hall within 30 minutes after the event is over; for events held off-campus, she must return within 40 minutes. The student should sign out on the board designated Special Permission.

Organizations and/or individual students may request from the Women's Residence Council campus-wide permission for special events. The written re-

quest, stating the nature of the activity, must be received at least one week prior to the event by the Chairman of Women's Residence Council, Housing Building. (The necessary request forms may be secured in the Office of the Coordinator of Women's Residence Halls.)

Late permission for any other reason should be requested from the Coordinator of Women's Residence Halls not later than 4:00 P.M. on the day of the event.

#### E. EMERGENCY PERMISSIONS

In an emergency or an unusual happening, the counselor may grant special permission.

#### F. QUIET HOURS

Quiet hours must be maintained from 7:00 P.M. until 7:00 A.M. "Reasonable" quiet must prevail at all times.

#### G. MEN CALLERS

Men callers are not permitted to visit in women's residence halls until after the noon hour. Men, however, may come into the lobby to call for a girl after 8:00 A.M. Monday through Saturday. Sundays, men may visit in the lounge after 8:30 A.M.

#### H. SOCIAL CONDUCT

Tech women do not wear blue-jeans, t-reddor pants, or bermuda shorts in the residence hall formal lounge or lobby, Tech Union, or academic buildings including the library. The exception to this rule is that casual clothes may be worn to labs with the permission of the instructor.

Casual clothes may be worn in the informal lounges in the halls which have them. Students should dress appropriately in the dining hall. Shorts, blue-jeans, brunch coats, bermuda shorts, or houseshoes are not worn. Night caps should not be worn in the dining halls, and curlers, etc. must be covered with a head scarf. The exceptions to this rule are Saturday, "casual dress" day, and the day of no classes between dead week and final exams when bermudas, jeans, and t-reddor pants are permitted in the dining halls. "Casual dress" does not

apply at lunch and dinner where there is a home football game. You should always show your consideration for others by not cutting in line in the dining hall.

Tech women are in accord with Emily Post in believing that good taste is consideration for others. This includes remembering that even though Tommy Techsan may be the "love of your life," public display of your affection is embarrassing to others. Therefore, the obvious display of affection is extremely bad taste, and it is not permitted in the lounge, lobby, or entrances to the hall.

#### I. COLLEGE REGULATIONS

(1) The college prohibits the possession or consumption of alcoholic beverages on the campus or in college buildings, and in student residences, both on-campus residence halls and off-campus housing. Students are held individually responsible for compliance with this regulation.

(2) Selling or peddling or offering for sale is strictly prohibited on the campus and in college buildings without permission from the Vice President for Business Affairs. Permission to sell in the residence halls will be granted only with the approval of the Director of Residence Halls. Any person selling on Tech campus should be asked to show a written statement of permission to sell, signed by the Vice President of the College.

#### AWS REGULATIONS

##### MEN'S RUSH PARTIES

(1) Girls may act only as hostesses at these events and are not to be involved in any sort of entertainment program.

(2) There is no set number that may attend the party as hostess, although sorority women should be aware of the Panhellenic policy which governs their members' participation.

(3) Only groups recognized as organized and professional may attend for the purpose of entertaining in any way.



(4) No late permission will be granted for residence hall girls who serve as hostesses at men's rush parties.

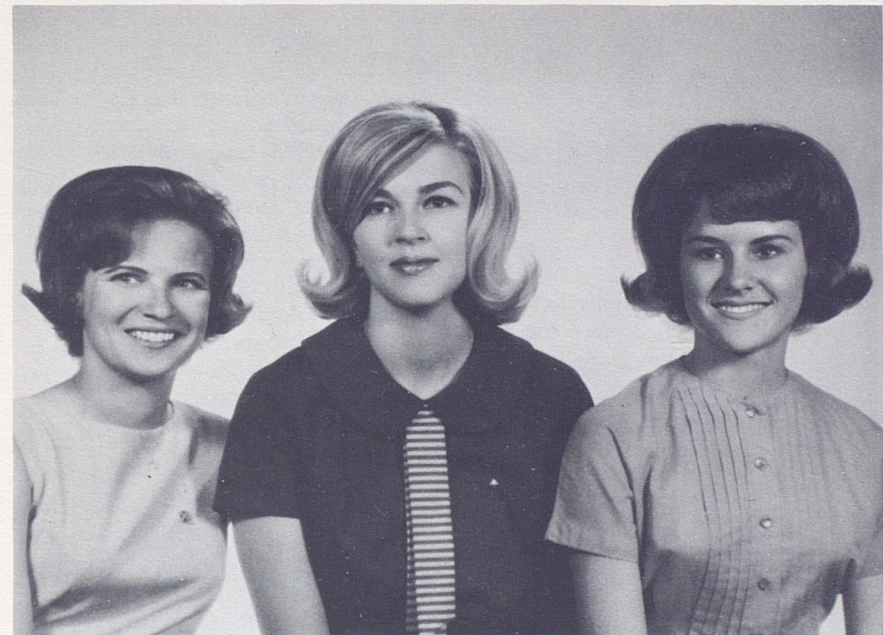
#### SERENADES

The fraternity or other organization desiring to serenade should contact the residence hall counselor by 5:00 P.M. of the Monday night the serenade is planned and report the time within five minutes when they will serenade in order to avoid conflicts with other serenading groups. Serenades shall

begin at 10:10 and 10:40 P.M. This permits only two per evening, and they must be over so that girls may be in their respective halls by 11:00 P.M. Late minutes will be given a girl who returns after 11:00 P.M.

Lubbock girls may be serenaded at one of the women's halls not already reserved by a hall resident.

Phi Mu Alpha, music fraternity, has special permission to serenade on Wednesday night.



Left to right: Marsha Meyers, AWS representative; Anne Albritton, president; Linda Urbanczyk, vice president.

### Clement Hall

Clement, one of the newest residence halls for upperclass women, is beginning its second fun-filled year in an atmosphere of gracious living.

Clement has the convenience of quiet study areas and the fun of an enclosed sunbathing area. A spacious contemporary formal lounge, complete with a baby grand piano, provides a place for entertaining friends and dates. For less formal entertainment, the informal lounge can be used for playing bridge or watching colored television.

In Clement, planned activities are self-evident in that they contribute to togetherness and provide opportunities for participation. We have mixers with men's dormitories, serenades by fraternities, all-dorm parties, homecoming and Christmas decorations, intramural sports, exchange dinners, and a weekly devotional.

Our traditions and ideas are just one year old and growing rapidly; this year promises to be as successful as the last. So, won't you join us in a most rewarding year?



## Doak Hall

You've heard about the old ivy-covered halls in eastern colleges. Well, you don't have to go to the East to find one. Doak is the perfect example of old-time collegiate loveliness, placed at the end of a long walk under an alcove of trees.

Doak is the most centrally located of all women's halls. It is just southeast of the Home Economics Building and in quick walking distance to the Bookstore, Tech Union, Ad Building, Circle, and all buildings beyond. It is connected to another upperclasswomen's hall, Weeks, and shares a joint cafeteria.

One of the first buildings on campus, Doak was originally a women's hall, but it housed men during World War II until the fall of 1958. At this time

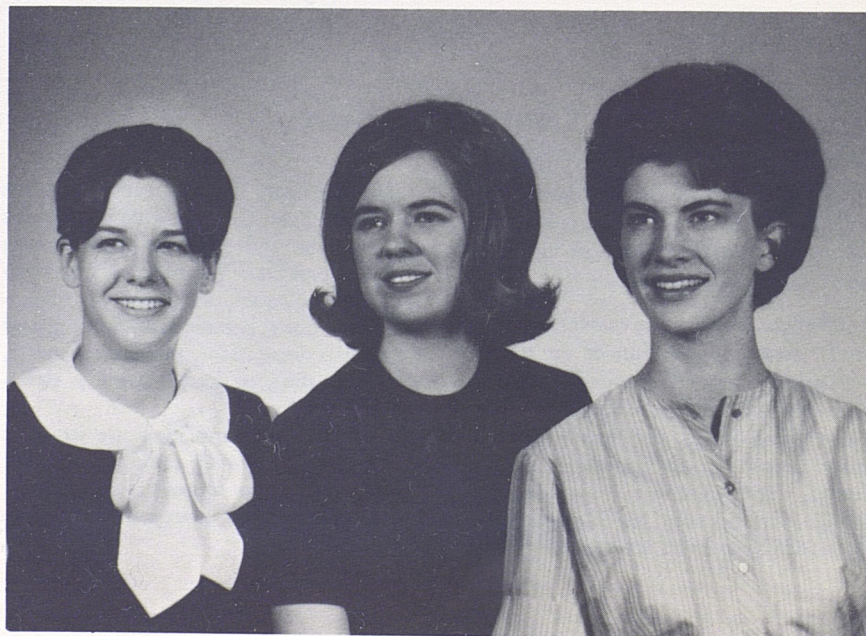
Doak was redecorated, and its facilities were returned to the women.

The hall was named for Mary Doak, first Dean of Women at Texas Tech, and contains rooms for approximately 300 women. All rooms are a pale green and have brown furniture.

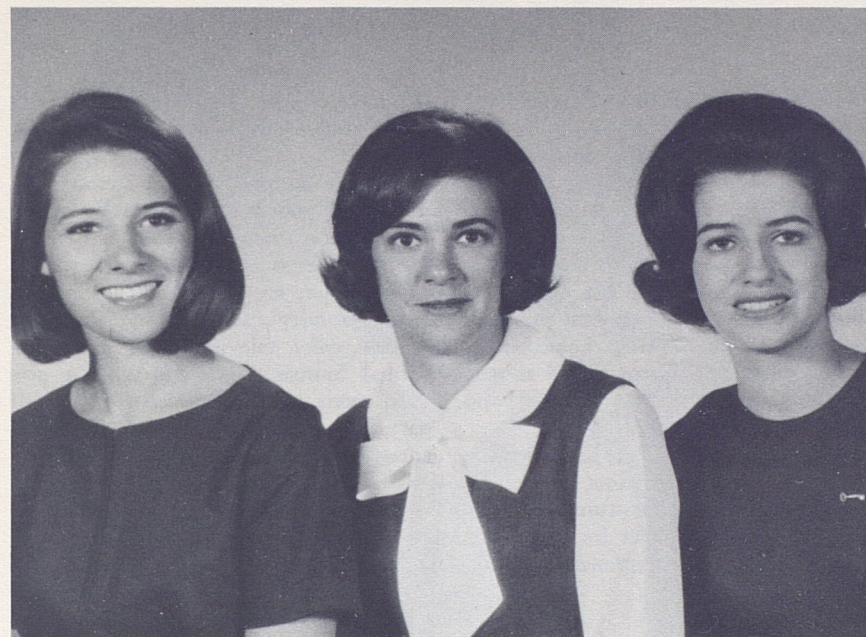
Doak Hall coeds enjoy birthday parties, all-dorm parties, weekly devotionals, their own study hall, and a rose dinner each semester for women with a 3.0 grade average.

The second floor lounge is a daily gathering spot for Doak girls and their dates. A color television and piano offer welcome diversion in the after-hours, and the lounge is a place for frequent holiday parties.

We hope you'll love Doak just as much as we do. See you there soon!



Left to right: Penny Ann May, AWS representative; Jacqueline Pardue, president; Shirley Allen, vice president.



Left to right: Colleen Walters, president; Margaret Windler, AWS representative; Mary Lou Clements, vice president.

## Drane Hall

Drane Hall is home for 300 girls spending their first year at Tech. You will find friendliness, lots of activities, and enthusiastic spirit as you begin your college career with us.

Freshmen at Drane begin the year with a succession of mixers with men's residence halls, all-dorm parties, exchange dinners, and monthly birthday parties. There is a newly-decorated informal lounge for relaxing and watching television. A beautiful, large formal lounge is perfect for playing bridge, watching television, and meeting with dates; it is also the place where one night each week residents gather for a short devotional.

Since good scholarship is the aim of every student, Drane's cafeteria is used

as a study hall each week night, and there is a candlelight scholarship dinner in the spring for those who make a 3.0 or over. Drane also has a faculty dinner, to which each girl may invite the professor who has done the most for her during her first year.

Drane sets aside a traditional day in the spring to raise money for the World University Service, and has won the WUS trophy for collecting more money than any other campus organization.

Drane girls leave their first home at Tech with fond memories of the time spent there. We will be eagerly waiting for you to join us in the fall, when you, too, can enjoy the spirit, cooperation, and friendliness of Drane.



## Gates Hall

Hi! We want *you* to be a Gates Girl! Gates Hall is eagerly awaiting its second year as a freshman dorm. Gates has been busy this year setting its traditions in hopes that you will continue them.

Gates is only one year old and already has an impressive list of honors. Gates and Wall Hall won first prize for dorm decoration during homecoming activities last fall. Gates served as host for the Carol of Lights Banquet and the AWS Women's Day Banquet.

Some of our "new" traditions include a hilarious Halloween Hoot Nanny in which everyone enters costume competition, and honors banquet for the studious 3., and freshman representative day.

We have mixers with men's dorms each week and a choir for the Carol of Lights.

Gates is designed with a freshman in mind. For your midnight snack there is a concession room. For the sun bathing season Gates is equipped with enclosed patios. There are also telephones in each room, laundry facilities, and elevators. A new color television adorns the informal lounge. Gates furnishes a private room in the basement for small parties and quiet studying. Other features of Gates Hall are like those of Wall Hall.

Gates is tops! Wouldn't you like to be a Gates Girl?



Left to right: Sherrill Reagan, vice president; Claudia Henderson, AWS representative; Gretchen Harris, president.



Left to right: Susan Childs, president; Carla Matthews, AWS representative; Patricia Ramsey, vice president.

## Horn Hall

Previously an upperclassman hall, this year Horn Hall will become a freshman dormitory.

Centrally located on campus and facing College Avenue, Horn provides a friendly and "homey" atmosphere for its residents. The cafeteria is available for studying at night, and the lounges

are available anytime for relaxing and watching television.

As residents of a new freshman hall, you will be challenged to help establish new traditions and the type of spirit that makes dormitory living such a memorable part of college life.

We are looking forward to having you in Horn Hall next year!



## Hulen Hall

Hello! Welcome to Hulen Hall, one of the new residence halls for upper-class women. Hulen is connected with her sister dorm, Clement Hall, by a large, refreshingly modern lounge.

This beautiful dorm was designed for leisure as well as study. A glassed-in cafeteria on the mezzanine provides a place to study from seven until twelve o'clock each night. A kitchenette provides a place for preparation of refreshments for all dorm parties and other

social events. Other conveniences include an enclosed sun-bathing patio, a centralized concession room, telephones in each room, an informal lounge with colored television, laundry facilities, and elevators.

Traditions include weekly devotionals, charity projects at Thanksgiving and Christmas, and the tapping of new legislators.

Why don't you join in on the fun of community living at Hulen Hall.



Left to right: Sarah Abernathy, president; Sherrell Andrews, AWS representative; Mary Margaret Davis, vice president.



Left to right: Rebecca Bryan, president; Judy Jay, AWS representative; Carla Swenson, vice president.

## Knapp Hall

For a home away from home, freshmen could not choose a better dorm than Knapp Hall, which houses 350 freshman girls.

Friendliness, enthusiasm, and activities are always found in Knapp. To begin the year, the dorm has mixers with men's dorms, followed by homecoming decorations, fraternity serenades, all-dorm parties, intramural sports, and exchange dinners.

Traditions at Knapp Hall include the "Knapp Doll House" for which the girls contribute dolls during the "Toys for Tots" campaign each Christmas, an open house during Christmas, and a Christmas candle-light ceremony.

There is an informal lounge for playing cards and watching television and a formal lounge for entertaining friends and parents.

Knapp promotes high scholastic achievement. The cafeteria is used week nights from 7:00 until 12:00 as a study hall. A banquet is held in the spring honoring the highest scholars in the dorm.

One night each week, after closing hours, a short devotional period is held in the formal lounge for those wishing to attend. This serves as an inspiration to many girls.

We hope to see you in Knapp Hall, the perfect home away from home!



## Wall Hall

Wall Hall, Texas Tech's newest freshman women's dormitory on campus, is one of the most modern and will be the home of 404 coeds. Located on the corner of 19th and Boston, the hall is easily accessible to the library and many of the academic buildings. Completely air-conditioned, the hall provides comfortable living all year long.

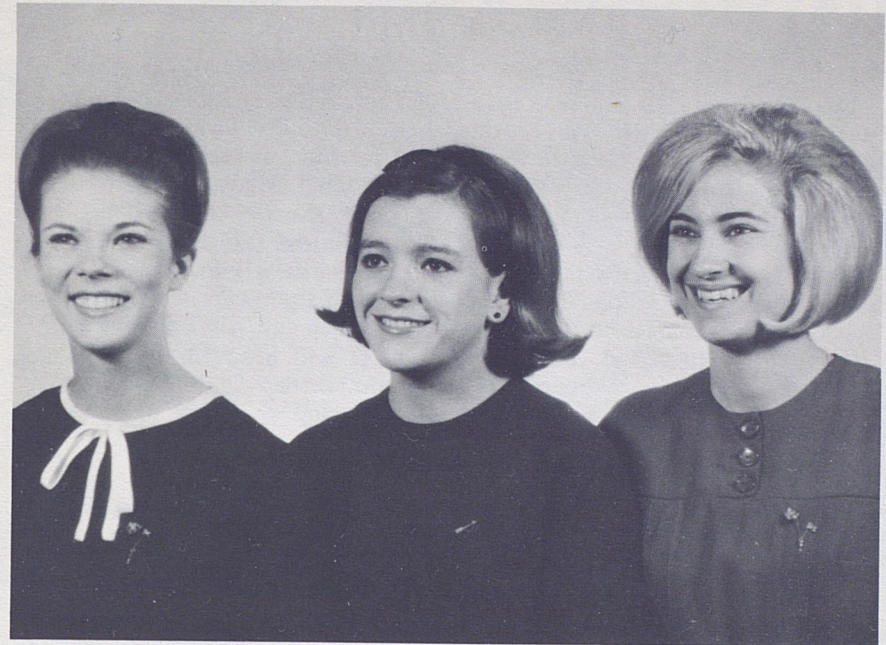
Designed with an eye for beauty and style and incorporating the Spanish motif of the campus, the hall is also equipped with the latest modern conveniences.

Only two years old, Wall has already created several traditions, and it offers a full program to the interested coed. As for scholarship, the spacious cafeteria is an excellent study hall, and each semester an honorary scholarship dinner is given. Devotionals are a meaningful part of dorm life here.

There are open houses and teas for the family and other guests, which take place throughout the year, such as on Dads Day and at Homecoming. Your dorm has so much to offer, and you can help make it even more important and enjoyable to your college life.



Left to right: Barbara Brunson, vice president; Nancy Rebecca Slover, president; Teresa Terrell, AWS representative.



Left to right: Catherine Balzer, president; Pricilla Dyer, vice president; Sinah Goode, AWS representative.

## Weeks Hall

You will find that living in Weeks Hall will add a special charm to your college days, for Weeks Hall offers you beautiful, tasteful surroundings and modern living conveniences.

Just off the main lobby is the formal lounge for entertaining your friends and parents. An informal lounge is perfect for watching favorite television programs and bridge games with your friends and dates.

Traditions, begun by Weeks' upperclasswomen in the past, are an important part of the hall life. Each Christmas we collect toys and donate them to a Negro children's nursery here in Lub-

bock. Another meaningful Christmas tradition is the candle-light caroling service given by our seniors.

You will also enjoy the all-dorm parties, serenades by fraternities, intramural sports and other group activities taking place all through the year.

We are especially proud of our scholastic achievement in Weeks. We have retired the upperclass scholarship trophy this past year after winning it four years in succession. We will be working hard to continue this record.

We know that you will find your stay in Weeks a memorable living experience.



## West Hall

This year West Hall will once again be a girls dormitory. It will be the home of about 300 upperclassman women, and is located next door to Sneed Hall and across the boulevard from Weeks and Doak.

West Hall girls are active in all campus activities, such as the "Carol of Lights," Homecoming and Christmas decorating contests, and intramural sports.

A good study atmosphere is maintained at West through the use of quiet hours between 7:00 P.M. and 7:00 A.M.

The cafeteria is available as a study hall each night. The lounge may also be used for study at all hours.

The West Hall lounge is the center of social life for the girls and their guests. In the lounge there are often such activities as a foursome of bridge, a group of students watching television, or an impromptu jam session.

There will be much tradition- and precedent-setting to be done in West this year, and we are looking forward to your help.



Left to right: Nancy Bain, president; Nancy Penick, AWS representative; Cara Pollard, president.

## Honoraries

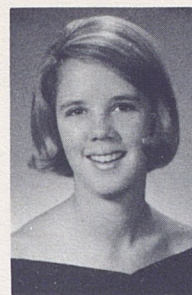




## Special Recognition

It is only natural that some students excel in their studies; and Tech, like most other colleges and universities, wants to recognize them. A number of organizations bearing the name of honoraries serve this purpose. They may be divided into two types. The first is the all-school honorary which is open for membership to all top students in the College regardless of their field. The second type is the more specialized organizations which invites only those students excelling in a particular field.

By means of the honorary, excellent students are recognized and membership in any one of them signifies a high achievement to any girl. The organizations within this category on the Tech campus are listed for your study and consideration.



Gretchen Strief



## Alpha Lambda Delta

Membership in Alpha Lambda Delta, national honorary fraternity for freshman women, is extended to coeds who have 15 semester hours to their credit. They must also have a 3.5 grade average for the first semester or average a 3.5 during both semesters of their freshman year.

An Alpha Lambda Delta at Tech is a member of the national organization which has grown from one small band of women at the University of Illinois in 1924.

Through her association with the honorary group, the Tech freshman will learn to appreciate and promote intelligent living, a high standard of learning plus encouragement of superior scholastic attainment.

New initiates are honored at a spring banquet given jointly with Phi Eta Sigma, national honorary fraternity for freshman men.

### OFFICERS

President ..... Gretchen Strief  
Vice President ..... Suzanne Crain  
Initiation Chairman ..... Judy Gordon  
Secretary ..... Sharon Baumgardner  
AWS Representative ..... Janie Kinney

## Junior Council

A red weskit lettered with a white "Jr. C" indicates a Tech woman who has received the highest honor which can be conferred upon a junior woman.

Junior Council, one of the oldest women's organizations on the campus, chooses for membership each year twenty outstanding women who have excelled in scholarship, leadership, and dependability while at Tech. A prerequisite for membership is a 3.0 grade average.

Each different Junior Council group decides which projects it will undertake during the academic year. Such projects have included working with academic recruiting, helping with campus elections, volunteer work, and publishing a list of cultural events on the Tech campus and in Lubbock.

### OFFICERS

President ..... Sandra Harris  
Vice President ..... Elizabeth Gerbetz  
Secretary ..... Cassandra Devlin  
AWS  
Representative ..... Roselaine Ashton



Sandra Harris



## Mortar Board

"We Mortar Boards receive you with welcome hearts and hands . . ." echoes over our campus one special day each spring as Forum Chapter of Mortar Board taps its new members. Five to twenty-five junior women are admitted to this select group each year. It is the highest honor they may receive based upon SCHOLARSHIP, LEADERSHIP, and SERVICE.

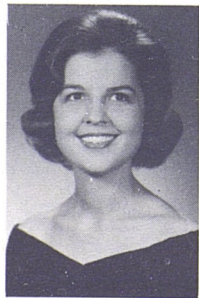
Mortar Board was founded in 1918 and now has over one hundred college and university chapters in all parts of the United States. After many years of petitioning the national organization, Forum became Mortar Board in 1957.

Mortar Board strives to serve both its individual members and the campus. A school calendar and a tutor list are two of the major publications. Other activities of Mortar Board are the Homecoming coffee for alums, the Smarty Party for freshman women having a 3.0 grade average, and a program for Junior Council and Alpha Lambda Delta.

This year Mortar Board began the "Pictures for Posterity" project in connection with the Southwest Collection. The project will compile a picture history of the college.

### OFFICERS

President ..... Linda McSpadden  
Vice President ..... Judy Glover  
Projects ..... Darline Hunter  
Secretary ..... Patricia Smith



Linda McSpadden



Dorothy Wells

## Phi Gamma Nu

Through Phi Gamma Nu, Tech women majoring in business administration become interested in civic and professional enterprise. The organization also encourages scholarship and participation in college activities.

Lambda chapter of the national professional sorority for women in business administration was established at Tech in 1949.

Members are women students working toward degrees in business. Pledges must have completed 6 hours in commerce and have a 2.5 grade average.

Lambda chapter sponsors the annual selection of a Mr. Executive, who is also a business administration major. Visits are made to various business firms in Lubbock and semi-annual banquets in the fall and spring are planned by the group.

The senior coed majoring in business administration with the highest scholastic average receives a scholarship key each year.

### OFFICERS

President ..... Dorothy Wells  
Vice President ..... Edens Teed  
Secretary ..... Genelyn Cannon  
Pledge Trainers ..... Melinda Barker  
Carolyn Carr  
AWS  
Representative ..... Beverly Dobbins



Orinea Fay Petty



## Phi Upsilon Omicron

Members of Phi Upsilon Omicron are chosen from women majoring in home economics who have completed their sophomore year and have an over-all grade average of 2.8 or better.

The honorary fraternity bases selection on character, scholarship, leadership, and campus activities, as well as on interest in home economics as a profession.

The activities of the organization give meaning to the stated purposes of strengthening the bonds of friendship, promoting the moral and intellectual development of its members, and advancing and promoting home economics.

Each year the group contributes to the Phi Upsilon Omicron scholarship and supports local welfare and alumni projects. Two teas are given annually, one for freshmen in home economics and one on Founder's Day.

### OFFICERS

President ..... Orinea Fay Petty  
Vice President ..... Elizabeth Baker  
Recording Secretary ..... Marge Eubank  
AWS  
Representative ..... Elizabeth Jackson  
Treasurer ..... Rebecca Pena

## Tau Beta Sigma

Tau Beta Sigma, the honorary fraternity for bandwomen, was founded in 1939 at Texas Tech. It is the only group on this campus to have had its beginning here. Although Tau Beta Sigma was founded at Tech, Alpha Chapter had to be located in Stillwater, Oklahoma, in order to share the same headquarters as Kappa Kappa Psi.

The group was founded on the same principles as Kappa Kappa Psi, honorary fraternity for bandmen. To become a member, the coed must be a member of one of the Texas Tech Bands and have a 2.25 grade average for the semester prior to her initiation.

The sorority purpose is to promote and cultivate a wholesome respect for band activities, to honor outstanding bandwomen for their interest and effort, to stimulate campus leadership, to foster a closer relationship between university and college bands, to provide a pleasant social experience and create a motivating force in its program.

The national charter was granted to Tau Beta Sigma on March 26, 1949, and on May 4 of the same year, Beta Chapter was installed on the Tech campus with 35 members.

### OFFICERS

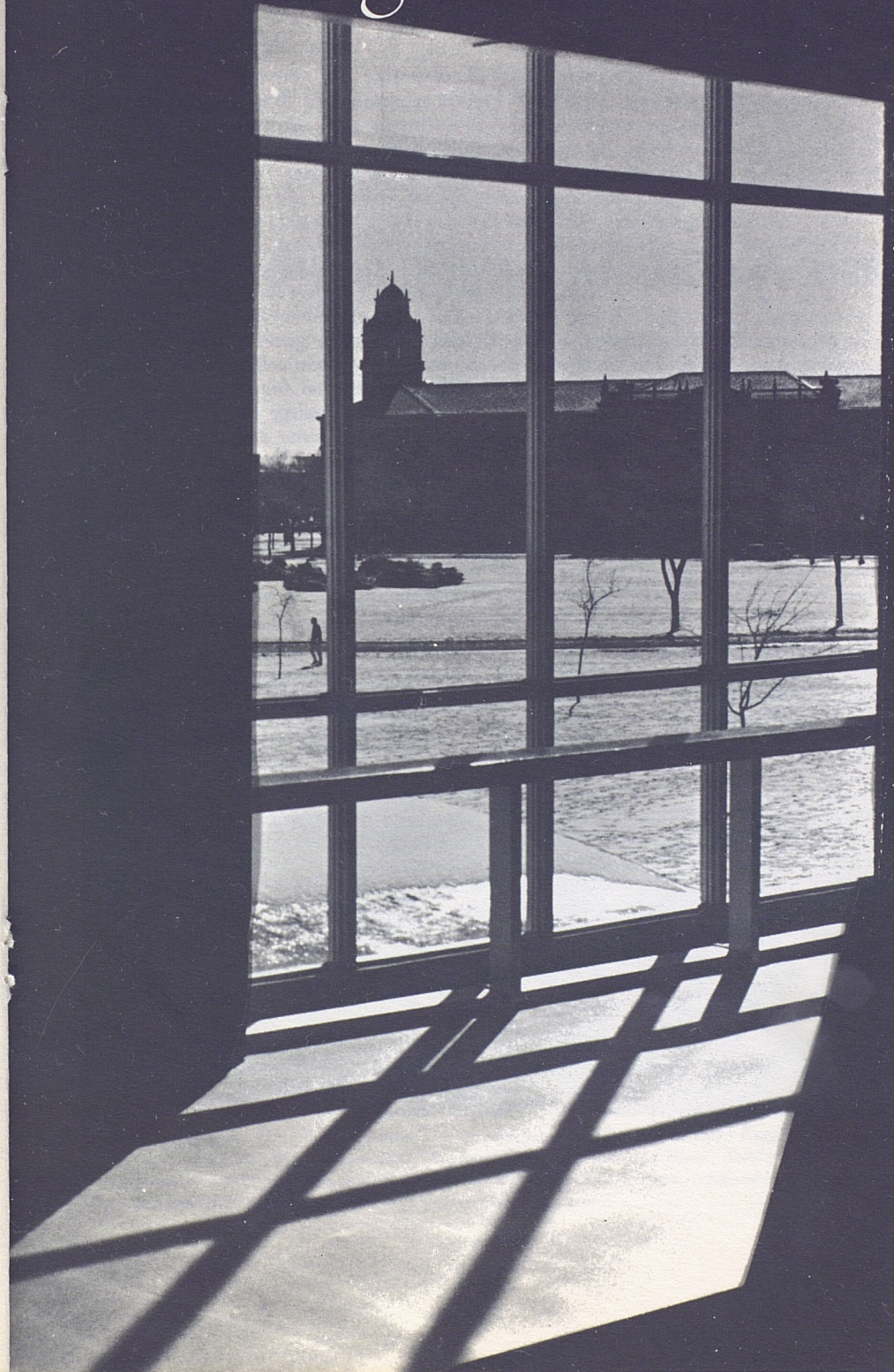
President ..... Jean Young  
1st Vice President ..... Karon Elkins  
2nd Vice President ..... Katherine Kleiss  
Secretary ..... Kay Powell  
AWS Representative ..... Barbara Binion



Jean Young



# College Panhellenic





## THE NATIONAL PANHELLENIC CREED

We, the Fraternity Undergraduate Members, stand for good scholarship for guarding good health, for wholehearted cooperation with our college's ideals for student life, for the maintenance of fine social standards, and for the serving, to the best of our ability, of our college community. Good college citizenship as a preparation for good citizenship in the larger world of alumnae days is the ideal that shall guide our chapter activities.

We, the Fraternity Alumnae Members, stand for active, sympathetic interest in the life of our undergraduate sisters, for loyal support of the ideals of our Alma Mater, for the encouragement of high scholarship, for the maintenance of healthful physical conditions in chapter house and dormitory, and for using our influence to further the best standards for the education of young women of America. Loyal service to chapter, college, and community is the ideal that shall guide our fraternity activities.

We, the Fraternity Officers, stand for loyal and earnest work, for the realization of these fraternity standards. Cooperation for maintenance of fraternity life in harmony with its best possibilities is the ideal that shall guide our fraternity activities.

We, the Fraternity Women of America, stand for preparation for service through the character building inspired in the close contact and deep friendship of fraternity life. To us, fraternity life is not the enjoyment of special privileges but an opportunity to prepare for wide and wise human service.

## An Introduction to College Panhellenic . . .

Dear Rushee,

In a few weeks you will arrive at Texas Tech to begin your college career. Many of you will participate in RUSH WEEK, a program that can result in many friendships for you, regardless of whether or not you pledge a sorority. A rushee has the opportunity of meeting hundreds of other new students and an equal number of sorority women. Formal rushing is worthwhile and vital, both for rushees and the sororities taking part. You will meet your future sorority sisters and other girls with whom you will form close friendships.

Before you arrive, please give careful thought to what sorority membership should mean in terms of your obligation as a future member and in terms of what you expect to gain personally through this association.

The 12 NPC sororities on Tech campus maintain high standards in matters of personal conduct, scholarship, and campus citizenship. The all-sorority grade average is consistently higher than the all-college or all-women's grade average. Your scholarship is an important consideration for the sorority for its members are expected to maintain above average academic ranking. In addition, each sorority supports a national philanthropy on the local community level. Each member, collegiate and alumnae, participates in the local project. Those of you who understand the relationship between a member and her sorority and wish to share in this relationship will find the group best suited to you personally. An open mind and natural, friendly manner will assure a meaningful and enjoyable Rush Week for you. We look forward to meeting you soon.

Rebecca Wilson, President  
College Panhellenic Association



Top row, left to right: Suzie Nelson, junior Panhellenic executive; Carolyn Hines, social activities-AWS representative; Rebecca Wilson, executive president; Judith Jeter, vice president. Bottom row: Carolyn Weaver, treasurer; Genelyn Cannon, scholarship chairman; Jill Philbrick, rush chairman; Suzanne Harrington, secretary.



## What Is Panhellenic?

The word, Panhellenic, is derived from Greek roots—"Pan" meaning all, and "hellenic" meaning Greek. Thus, Panhellenic is an organization in which all Greek letter social sororities are represented, nationally as well as on this campus.

To promote inter-sorority cooperation and strengthen sorority-community relations as a whole, the twelve social sororities at Texas Tech are member groups of the College Panhellenic Association.

### COLLEGE PANHELLENIC COUNCIL

The governing body of the organization is the Panhellenic Council, composed of two representatives from each sorority. This council meets regularly to discuss questions of mutual concern and interest, and to plan the various activities and special events sponsored by Panhellenic throughout the year. Before action is taken on certain matters, the representatives have an opportunity to discuss questions with their chapter so that all sorority members have a voice in Panhellenic decisions.

The officers of College Panhellenic Council are ex-officio members of the council. The executive board meets bi-monthly to discuss plans and in some cases, make recommendations to the council for action, coordinate the various activities of the Association, and conduct routine business matters. The officers serve as rush advisors and coordinate rush week.

Panhellenic officers and council delegates are as follows:

President ..... Rebecca Wilson  
Vice President ..... Judith Jeter  
Secretary ..... Suzanne Harrington  
Treasurer ..... Carolyn Weaver

Scholarship  
Chairman ..... Genelyn Cannon  
Junior Panhellenic  
Advisor ..... Sue Nelson  
Social Activities and AWS  
Representative ..... Carolyn Hines  
Rush Chairman ..... Jill Philbrick

Alpha Chi Omega  
President ..... Carolyn McGhie  
Delegate ..... Karen Huffman

Alpha Phi  
President ..... Ann Courtney  
Delegate ..... Catherine Carmichael

Chi Omega  
President ..... Eugenia Condray  
Delegate ..... Linda Groce

Delta Delta Delta  
President ..... Karen Koger  
Delegate ..... Betty Jane Brown

Delta Gamma  
President ..... Sue Johnson  
Delegate ..... Clara Robinson

Gamma Phi Beta  
President ..... Jane Deaver  
Delegate ..... Jane Morse

Kappa Alpha Theta  
President ..... Barbara Haldeman  
Delegate ..... Cindy McCarty

Kappa Kappa Gamma  
President ..... Elaine Walter  
Delegate ..... Jane Edwards

Phi Mu  
President ..... Betty Melzer  
Delegate ..... Betty Jo Walvoord

Pi Beta Phi  
President ..... Eugenia Odell  
Delegate ..... Nan Faulkner

Sigma Kappa  
President ..... Kay Farrell  
Delegate ..... Janet Neyland

Zeta Tau Alpha  
President ..... Vicki Pharr  
Delegate ..... Suzanne Stilbert

## WHAT ARE SORORITIES?

### ACTIVE CHAPTERS

A sorority is an organization whose members have elected to establish a close affiliation and friendship with one another. Each sorority has a similar purpose—to offer an opportunity for close friendship and to teach its members leadership through the experience of working with others on common goals and projects. Mutual interest in education, college activities, and in each other binds the group together. Every sorority encourages and expects above average scholarship. Each encourages participation in varied activities which in turn offer unlimited and valuable experience.

Sororities promote lifetime friendships that are maintained after college in alumnae groups and chapters. The affiliation with a national organization gives chapter members a meaningful concept of their responsibility as individuals in a group.

### ALUMNAE GROUPS

Upon leaving college, initiated members of the sorority become alumnae and are eligible for membership in alumnae organizations. Each of these groups participates in a wide range of philanthropic and educational projects sponsored by its national organization as well as supporting local community programs.

### HOW DO SORORITIES CHOOSE THEIR MEMBERS?

Before a sorority asks you to pledge, the members want to be sure that you will be happy in their group and that they, in turn, will enjoy working with you. It is important for the sorority members to meet you and to see you as you really are. Formal rushing has been planned with this idea in mind. At the parties, sorority members will decide whether they think you will be a congenial member of their group.

Naturally, you want to make a "good impression" and you will dress carefully as will the girls whom you are going to meet. But do not think your appearance is all that counts. *Your high school record of activities and scholarship is carefully considered by a sorority in determining your potential as a member.* These are, after all, fairly dependable indications of your future achievements at Texas Tech.

Each sorority is limited in its total membership and its total number of pledges each year. The number of pledges allowed each chapter is determined each year by the number of girls interested in sorority membership. Each sorority was able to pledge a maximum of thirty-five girls during the last formal rush period.

### HOW DO YOU CHOOSE A SORORITY?

You should choose a sorority in exactly the same way you would choose any group of friends. It should be a decision based upon mutual interests and friendship.

During rush you will have many opportunities to talk with sorority women. They will be looking at you as a potential friend and you will be looking at them in the same manner. Act, then, as if you were with a group of your friends and talk about things which really interest you. Do not be afraid to ask questions about their sorority activities and finances. Sorority members will be happy to talk with you about them.

Do not set your heart on one group alone. It is best to know several groups. Remember to look for the heart of the sorority — its members. The girls you choose as sorority sisters will be your close friends for four years of college and for years afterwards. Every group is worthwhile and has much to offer you. What do you have to offer it?

Keep your eyes open and think for yourself. Do not be influenced by the



opinion of your associates and relatives. The decision as to which group is best for you must be based on personal convictions and mutual interest. When the time comes for a decision, make it a wise one.

## FINANCES

Your FIRST consideration in deciding to pledge a sorority must be whether or not you would be able to meet your financial responsibilities. All the sororities at Texas Tech have very similar financial requirements for members and pledges. Check your pocketbook and consider carefully the expenses of being a sorority pledge and member.

If you can afford to pledge a sorority, the extra expense is repaid a thousand-fold in companionship and sisterhood. Be sure you want to assume this obligation before choosing a group and pledging it.

## RANGE OF SORORITY EXPENSES — 1965-1966

Pledge Fee .....	\$12.50-\$30.00
Initiation Fee .....	\$40.00-\$85.00
Badge .....	Some in cost of initiation, others \$6.00 and up
Monthly Pledge Dues .....	\$13.50-\$26.00
Monthly Active Dues ...	\$13.50-\$18.00
Pledges' Financial Obligation .....	\$105.00-\$345.00
Actives' Financial Obligation .....	\$121.00-\$237.00

Most groups have a building fund fee ranging from \$50.00 to \$100.00. This may be in addition to the above standard fees or included in monthly dues. Other extra items may include favors for dinner dances and retreats, although some include these items in their dues. Extra costs which would not be included in dues might include personal insignia jewelry and composite pictures.

All sororities receive financial supervision from experienced alumnae and employed accountants. The financial advisors of the chapter welcome consultation with the parents at any time.

## FORMAL RUSH

### LIVING ACCOMMODATIONS FOR RUSH WEEK

Rushees will be housed in freshman women's residence halls. Insofar as possible you will be given the room which has been assigned to you for the fall semester. Otherwise, the room you use during rush is temporary and in no way affects your regular housing for the college year. You will be assigned to your room when you register on campus.

The Tech Union will open at 10 A.M. Saturday, September 4, for registration. You are to go first to the Union to register and get a residence hall room assignment. Even if you have a permanent room assignment for the college year, you must go to the Union in order to begin rush registration with Panhellenic. After you have completed registration at the Union, you will move into the residence hall to which you are assigned for Membership Selection Week. You must register and move into the hall between the hours of 10 A.M. and 4 P.M. on September 4.

When you move into the residence hall, you will pay a key deposit of \$1.00 which is refundable when you vacate the room at the close of Membership Selection Week. Rushees must be checked out of their rooms by 12 noon, Saturday, September 11, if not already in regular rooms, in order that the students assigned to that room permanently may move in.

Since dining rooms in the halls are not open during Membership Selection Week, the Tech Union will serve meals to rushees at a nominal charge. When you go to the Union to register, you

will be required to purchase a meal ticket for the week.

Panhellenic expects all rushees to be neat, orderly, and quiet in their rooms, and to be courteous and co-operative with those in charge of the residence halls, and with the people administering the program.

The halls will close at 10:00 P.M. Saturday through Friday. Each rushee is responsible for signing in and out of the hall. Rule infractions will be transferred to your fall semester record.

## IMPORTANT TIPS FOR RUSHEES

1. Fill out the Rush Registration Form and the 12 Information Blanks and grade information slip and return them with 12 billfold-size pictures, to the office of the Dean of Women by AUGUST 10. *Your registration for rush will not be complete until all fees are paid, and information blanks, registration and grade forms, and pictures are received.* Only registrations that are complete and postmarked before midnight, August 10, will be accepted.
2. Pay rushing registration fee of \$3.00, payable to Texas Tech College Panhellenic Association.
3. Pay room fee of \$16.00, payable to Texas Technological College.
4. If you find you must cancel your rush registration, notify the Office of the Dean of Women. Your room fee of \$16.00 will be refunded if you cancel by August 10. No exceptions can be made to this policy.
5. The Tech Union will be open for rush registration and room assignment from 10 A.M. to 4 P.M. Saturday, September 4, 1965. The residence halls will be open at 10 A.M. for occupancy AFTER registering at the Union.
6. The College Panhellenic Advisor's Office is permanently located in the Dean of Women's Office; however, during

Rush, all activity and business will take place in a temporary Panhellenic Office.

You may send checks or money orders, but please do not send cash through the mail. Do not send a check combining the two amounts.

It is recommended that registration be completed as soon as you receive the material from the Panhellenic office. You may register by mail or in person. This must be no later than August 10.

## MEMBERSHIP SELECTION WEEK SCHEDULE

(A complete schedule with exact times and places will be given rushees at registration.)

Parties for Period I are held in various locations on the campus; each group is assigned to a place by rotation. Parties for Periods II, III, IV, and V will be held in private homes in Lubbock or in sorority lodges. The locations will be posted on the bulletin boards in the freshman women's residence halls. Rushees will provide their own transportation.

*Saturday, September 4, 1965*

- 10 A.M.-4 P.M. — Registration and move into rooms.
- 7:30 P.M. — Rushee Convocation and silence begins.
- 10:00 P.M. — Be in residence halls for wing meetings.

### PERIOD I

Duration — 30 minutes. You must attend each party.

*Sunday, September 5*

(You may attend early church services)  
Twelve parties beginning at 12 Noon.

### PERIOD II

Duration — 1 hour. You must accept all invitations to a maximum of eight.

*Monday, September 6*

12 Noon — Pick up invitations.  
Three parties beginning at 2 P.M.



*Tuesday, September 7*

Five parties beginning at 9:00 A.M.

#### PERIOD III

Duration — 1 hour. You must accept all invitations to a maximum of five.

*Wednesday, September 8*

7:30 A.M. — Pick up invitations.

Five parties beginning at 9 A.M.

#### PERIOD IV

Duration — 1 hour. You must accept all invitations to a maximum of three.

*Thursday, September 9*

10:30 A.M. — Pick up invitations.

Three parties beginning at 1 P.M.

#### PERIOD V

Duration — 1½ hours. You must accept all invitations to a maximum of two.

*Friday, September 10*

2 P.M. — Pick up invitations.

Two parties beginning at 6 P.M.

10 P.M. — Signing of preference cards.

*Saturday, September 11*

8 A.M.-12 NOON — Rushees move to permanent dormitory rooms, or college residence.

4-6 P.M. — Rushees remain in MEMBERSHIP SELECTION WEEK rooms in case rush officials need to contact them regarding preference cards or other related subjects.

6 P.M. — Pick up bids.

### PREFERENTIAL BIDDING

Friday, September 10 at 10:00 P.M., all rushees fill out a preference card. On this card the rushee lists in order of preference the two sororities that she is willing to pledge. *Do not list on your preference card the name of a sorority you would be unwilling to join.*

According to National Panhellenic Conference, "when a girl receives a bid under the preferential system, the signing of the preference card shall be bind-

ing to the extent that she shall be considered ineligible for one calendar year for a bid from any fraternity other than the one from which she received a bid, whether it be Texas Technological College or elsewhere, in accordance with the correct functioning of the preferential system."

THEREFORE A GIRL MUST BE WILLING TO PLEDGE EITHER OF THE TWO SORORITIES SHE LISTS.

### WHAT TO WEAR—WHEN

One of the most important things to remember when planning what you will wear during rush is the climate in Lubbock. Simplicity and practicability are the keynotes in campus and rush clothes.

Good grooming is the most important thing about appearance, not expensiveness of your clothes. Texas Tech coeds do not wear shorts or long pants of any kind in the Tech Union or academic buildings. This applies to registration the first day.

Period I — Wear fall cottons, flats, and hose.

Period II — Wear fall cottons, loafers or flats.

Period III — Wear fall cottons, loafers or flats.

Period IV — Wear fall cottons, hose and heels (no hats).

Period V — Wear an after-five dress, hose and heels (no hats).

### SUMMER RUSH

The College Panhellenic Association of Texas Technological College has adopted the policy of NOT participating in any form of pre-college rush. This prohibits a sorority member at Tech from participating in a rush party other than during Formal Rush.

All prospective rushees are reminded that they are NOT to participate in or attend any function given by only one fraternity in the form of an organized party, prior to Formal Rush.

## RULES GOVERNING FORMAL RUSH WEEK

### I. Eligibility of Rushees

Rushees must be regularly enrolled or in the process of enrolling in Texas Technological College for 12 or more hours in order to be eligible to participate in any rushing program. Rushees entering from high school must have at least a "C" high school average to be eligible. (This is the *minimum* grade average.) Any rushee previously enrolled in any college, including summer school, must have at least a "C" overall average and a "C" average for the semester prior to pledging in which she was enrolled in order to be eligible for rushing. Semester prior to pledging shall be interpreted as the fall or spring semester or all summer school work. All rushees are responsible to see that their transcript has been received by the Registrar's Office of Texas Technological College before the day rush begins. Complete the grade Information Form enclosed with rush registration material, and return it with other material.

### II. Membership Selection Rules

1. Rush Week is defined as beginning at 10 A.M. Saturday, September 4 and ending with receiving bids at 6 P.M. Saturday, September 11. Silence begins at 7:30 P.M. September 4 when Convocation is held.

2. The residence halls will close at 10:00 P.M. on Saturday through the following Friday night, and at 12 midnight on the Saturday rush ends. Each rushee is required to sign in and out of the hall. Lights are to be turned out at midnight during rush.

3. Upon arrival in Lubbock, a rushee is not to go to the home of sorority members, or be with anyone connected with a sorority other than her immediate family.

4. Rushees shall not grant interviews to the press or pose for photographers during rush week unless arrangements

have been made with College Panhellenic and the Office of the Dean of Women.

5. Emergency telephone calls will be taken care of through freshman women's residence hall offices. Telephone calls may not be taken by rushees unless the emergency is explained to the Residence Hall Counselor. Request that your family and friends not insist upon talking with you during rush for you are the one who is penalized.

6. Rushees must furnish their own transportation to and from parties.

7. A rushee must arrive at and leave all rush parties at the hour specified in the invitation.

8. A rushee must attend all parties which she has accepted. Broken dates are not permitted. In case of illness, accident or withdrawal from rush, she must notify the Panhellenic Office.

9. There is to be no smoking at any of the rush parties.

10. Rushees are subject to the penalty of deferred pledging for one semester for violation of rush rules.

### III. Silence During Formal Rush

*Silence* is a time when all rushees are asked not to converse with people other than the rush advisors except at the parties. The reason for this is that Panhellenic does not want a rushee's choice of sorority to be the result of outside influence. Girls are much happier in a sorority which they themselves have chosen rather than a group which parents, boys, and other friends encourage them to join.

1. The period of silence begins with Convocation on Saturday, September 4 at 7:30 P.M. and ends at 6 P.M. Saturday, September 11. Rushees may not receive guests in the hall until silence is over. Silence ends for sorority members at 6 P.M. Saturday, September 11.

2. There shall be no contact or conversation between a rushee and sorority member, pledge, or alumnae except at the specified rush parties. (You may say hello!)



3. Sororities are bound by silence and may not deliver letters, telephone calls or telegrams to rushees at any time.

4. You may not receive mail, phone calls, or visitors. (You may write letters home.) Packages and messages may be checked through the Central Panhellenic Office and then be given rushees. Mail will not be delivered until Monday, September 13.

5. There is to be no contact whatever with men, family, or friends during rush week.

#### IV. Illegal Rushing

1. Oral invitations to parties or to join a sorority are absolutely forbidden and invalid during formal rushing.

2. By mutual agreement there shall be no "spiking" at any time. "Spiking" is defined as persistent persuasion on the part of a sorority to secure from a

rushee some commitment of preference for that group.

3. Sorority members shall make no statement to rushees or others giving their idea of sorority ratings, for there is no such thing.

4. No gifts, flowers, or favors can be given to rushees with the exception of Period V parties. Name tags are to be distributed by College Panhellenic during registration, and to be worn all week with the exception of Period V parties.

#### V. Penalties for Violations of Rush Rules by Sororities

It is your responsibility to report infractions of any rushing rule to the Dean of Women's Office within 48 hours of the occurrence. All penalties for violations of rushing rules will be decided by the Judiciary Committee of College Panhellenic.

### Rush Registration Instruction

Have you followed these steps in preparing your rush registration material? DEADLINE — AUGUST 10, 1965 (postmark).

1. One (1) check for \$16.00 payable to Texas Technological College for your room.

2. One (1) check for \$3.00 payable to Texas Tech College Panhellenic for your registration. DO NOT SEND SINGLE CHECK COMBINING THE TWO AMOUNTS.

3. Twelve (12) white information blanks legibly filled in.

4. Twelve (12) billfold pictures of yourself.

5. White Master Rush Registration Form completed. (This is for use of Panhellenic Advisor and Rushing officials.

6. Grade Information form filled out.

7. Place two checks, Registration Form, twelve Information Blanks and twelve pictures, and Grade Information Form in one envelope and mail to Office of the Dean of Women, Texas Technological College, postmarked no later than AUGUST 10, 1965.

8. Do you know your eligibility? If you have attended college any place under any condition, this affects your rushing eligibility. You must have a C average for any previous college work. You must also have a C average for the preceding regular semester of college if you were enrolled during a regular academic year or all summer school work. If you are entering directly from high school, you must have a minimum C average for all high school course work. You cannot have been a member of an NPC sorority at Texas Tech or elsewhere prior to this time. If you have pledged but were not initiated, a year must have lapsed since depledging or your pledgship must have expired by September 4, 1965.

## Alpha Chi Omega

GAMMA RHO



Founded at DePauw University, October 15, 1885

Number of collegiate chapters — 99

Colors — Scarlet and olive green

Insignia — Lyre with black enamel scroll across strings bearing Greek letters

Flower — Scarlet carnation with smilax

Publication — "The Lyre"

Philanthropy — Aid to cerebral palsy patients

Nickname — Alpha Chi

Outstanding events — Hawaiian Luau Dinner Dance, Formal Pledge Presentation, Founders' Day Dinner, Chapter Retreat and Workshop, Senior Banquet, Paddle Party, Alpha Chi Week in honor of new initiates, Homecoming Coffee, and Faculty Tea

President — Carolyn McGhie

Rush Chairman — Lillian Pearce



Left to right: Carolyn McGhie, president; Dorothy K. Birdsong, AWS representative; Lillian Pearce, rush chairman; Sally Thompson, pledge trainer.





*Left to right: Ann Courtney, president; Jodie Marshall, rush chairman; Kathy Butler, pledge trainer; Marilyn Poteet, AWS representative.*

## Alpha Phi

GAMMA IOTA



Founded at Syracuse University, October 10, 1872

Number of collegiate chapters — 96

Colors — Silver and bordeaux

Insignia — Plain gold monogram of the two Greek letters with the letters "AEO" in black

Flowers — Lily-of-the-valley and forget-me-nots

Publication — "The Alpha Phi Quarterly"

Philanthropy — Cardiac Aid Foundation

Nickname — A Phi

Outstanding events — Fall and Spring Retreat, Presentation Dance, Work with Cardiac Aid during Heart Week, Trick or Treating for an orphanage, Founder's Day Banquet, Starlite Formal, Bermuda Short Dance, Paddle Party, Homecoming Coffee, Inspiration Week, Kidnap Breakfast, Scholarship Banquet, Alumnae Christmas Dinner

President — Ann Courtney

Rush Chairman — Jodie Marshall

## Chi Omega

KAPPA ZETA



Founded at the University of Arkansas, April 5, 1895

Number of collegiate chapters — 135

Colors — Cardinal and straw

Insignia — Fourteen white stones, either pearls or diamonds, arranged in the X (Chi) which is placed on the Greek letter Omega, raised slightly. Greek letters are written across the top. On the sides are the owl and the skull and cross-bones.

Flower — White carnation

Publication — "Eleusis"

Philanthropy — Muscular dystrophy

Nickname — Chi O

Outstanding events — Spring and Fall Eleusinian Festivals, Presentation, Paddle Party, Dinner Dance, Annual Retreat, and Party for orphans.

President — Eugenia Condray

Rush Chairman — Nancy Garner



*Left to right: Eugenia Condray, president; Suzanne Hightower, pledge trainer; Lorrie Woods, AWS representative; Nancy Garner, rush chairman.*





*Left to right: Karen Koger, president; Michele Stephens, rush chairman; Jan Weaver, pledge trainer; Jane Hollingsworth, AWS representative.*

## Delta Delta Delta

PHI ETA



Founded Thanksgiving Eve. 1888, at Boston University

Number of collegiate chapters — 108

Colors — Silver, gold, and blue

Insignia — Three jeweled stars with a crescent of gold bearing three deltas

Flower — Pansy

Publication — "The Trident"

Philanthropy — Awards scholarships to American and Canadian women students

Nickname — Tri Delta

Outstanding events — Founders' Day Dinner, Delta Week in honor of new initiates, Annual Presentation Dance, Scholarship Banquet, Chapter Retreat, Pansy Breakfast

President — Karen Koger

Rush Chairman — Michele Stephens

## Delta Gamma

GAMMA XI



Founded at Lewis School, Oxford, Mississippi, December, 1873

Number of collegiate chapters — 90

Colors — Bronze, pink, and blue

Insignia — Anchor with white shield bearing Greek letters

Flower — Cream rose

Publication — "The Anchora"

Philanthropy — Sight Conservation and Aid to the Blind

Nickname — DG

Outstanding events — Spring Dinner Dance, Fall Presentation, Fall Retreat, Founders' Day Banquet, Anchor Week

President — Sue Johnson

Rush Chairman — Constance Curry



*Left to right: Sue Johnson, president; Ellen Bryan, AWS representative; Constance Curry, rush chairman; Sandra Cox, pledge trainer.*





*Left to right: Catherine Balzer, rush chairman; Jane Deaver, president; Sharon Butler, pledge trainer; Susan Esterak, AWS representative.*

## Gamma Phi Beta

BETA TAU



Founded at Syracuse University, New York, November 11, 1874

Number of collegiate chapters — 79

Colors — Mode and brown

Insignia — The Greek letters enclosed in a black enameled crescent

Flower — Pink carnation

Publication — "The Crescent"

Philanthropy — Own and operate two summer camps for underprivileged girls at Vancouver, B.C., and Indian Hills, Colorado

Outstanding events — Founders' Day Banquet, Pledge Retreat, Fall Presentation, Spring Dinner Dance, Romeo Valentine Dance, Retreat, Paddle Party, Beta Tau Birthday Party, Senior Breakfast

President — Jane Deaver

Rush Chairman — Catherine Balzer

## Kappa Alpha Theta

GAMMA PHI



Founded at DePauw University, January 27, 1870

Number of collegiate chapters — 90

Colors — Black and gold

Insignia — Kite-shaped, gold border, black enamel shield and a white chevron on which are inscribed the Greek letters

Flower — Black and gold pansy

Philanthropy — "Kappa Alpha Theta Foundation," Institute of Logopedics, aid to the blind, the Dr. Matilda Brooks Research Laboratory

Publication — "Kappa Alpha Theta"

Nickname — Theta

Outstanding events — Presentation Dance, Retreat, Dinner Dance, Kite Flying, Founder's Day Banquet, Pledge Retreat

President — Barbara Haldeman

Rush Chairman — Anne Reed



*Left to right: Barbara Haldeman, president; Jenny Matthews, pledge trainer; Anne Reed, rush chairman; Candace Conley, AWS representative.*





Left to right: Betty Johnson, vice president; Carol Loughmiller, AWS representative; Pamela Price, membership chairman; Carolyn Johnston, pledge trainer.

## Kappa Kappa Gamma

DELTA PSI



Founded at Monmouth College, October 13, 1870

Number of collegiate chapters — 92

Colors — Dark and light blue

Insignia — Golden Key

Flower — Fleur-de-lis

Publication — "The Key"

Philanthropy — Rehabilitation services for crippled children and adults

Nickname — Kappa

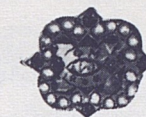
Outstanding events — Chapter Retreat, Pledge-Active Picnic, Fall Presentation, Pledge Peppermint Party, Spring Dinner Dance, Scholarship Banquet, Founder's Day Banquet, Senior Ivy Service, Monmouth-Duo.

President — Elaine Walter

Rush Chairman — Pamela Price

## Phi Mu

ALPHA CHI



Founded at Wesleyan College, Macon, Georgia, March 4, 1852

Number of collegiate chapters — 90

Colors — Rose and White

Insignia — Shield of black overlayed on a shield of gold; black shield bears Greek letters and three stars

Flower — Rose enchantrees carnation

Publication — "The Aglaia"

Philanthropy — Project HOPE

Outstanding events — Pledge Presentation, Kidnap Breakfast, Retreat, Dinner Dance, Founders' Day Banquet, Paddle Party, Heart in Hand Week, Open Dance

President — Betty Melzer

Rush Chairman — Judy Means



Left to right: Beth Wilder, AWS representative; Betty Melzer, president; Jesse Hubbard, pledge trainer; Judy Means, rush chairman.





*Left to right: Eugenia Odell, president; Nancy Fordtran, pledge trainer; Ann Nabors, AWS representative; Susan Waits, rush chairman.*

## Pi Beta Phi

TEXAS GAMMA



Founded at Monmouth College, April 28, 1867

Number of collegiate chapters — 108

Colors — Wine and silver blue

Insignia — Golden Arrow with Greek letters inscribed on feathers

Publication — "The Arrow"

Philanthropy — Founding and Maintenance of the Pi Beta Phi Settlement School in Gatlinburg, Tennessee.

Nickname — Pi Phi

Outstanding events — Fall Chapter Retreat, Ivy League Dance, Presentation, Dinner Dance, Biennial Sante Fe Retreat, Founders' Day Banquet, Senior Farewell

President — Eugenia Odell

Rush Chairman — Susan Waits

## Sigma Kappa

GAMMA IOTA



Founded at Colby College, November 9, 1874

Number of collegiate chapters — 104

Colors — Maroon and lavender

Insignia — Gold triangle supporting a raised triangle of maroon enamel bearing the Greek letters in gold

Flower — Violet

Publication — "The Sigma Kappa Triangle"

Philanthropy — The Maine Sea Coast Mission, National Gerontology Program, American Girls' Greek School, Salonika

Nickname — Sigma

Outstanding events — Presentation Dance, Dinner Dance, Founders' Day Banquet, Retreat, Mr. Pledge Dance, Pledge Levi Party, Senior Breakfast.

President — Kay Farrell

Rush Chairman — Suzanne Samson



*Left to right: Kay Farrell, president; Marcia Winkelman, AWS representative; Linda Loebman, pledge trainer; Suzanne Samson, rush chairman.*





Left to right: Vicki Pharr, president; Karen Kitzman, pledge trainer; Judy Haworth, AWS representative; Joyce Kimmons, rush chairman.

## Zeta Tau Alpha

GAMMA TAU



Founded at Longwood College, Farmville, Virginia, October 15, 1898  
 Number of collegiate chapters — 126  
 Colors — Steel gray and turquoise blue  
 Insignia — Shield of black enamel superimposed on a shield of gold; black shield bears five-pointed crown and Greek letters  
 Flower — White violet  
 Publication — "Themis"  
 Philanthropy — Work in cooperation with the National Society of Crippled Children  
 Nickname — Zeta  
 Outstanding events — Presentation of Pledges, Reception on Dad's Day, Homecoming Reception, Founder's Day Banquet, Member-Pledge Retreat, Scholarship Recognition Service, Easter Party for Crippled Children, Dinner Dance, Senior Farewell Dinner, White Violet Breakfast, Paddle Party, Zeta Week in honor of new initiates  
 President — Vicki Pharr  
 Rush Chairman — Joyce Kimmons

## Appendix

### Constitution and By-Laws of the Association of Women Students

#### ARTICLE I Name

SECTION 1. The name of this organization shall be the Association of Women Students of Texas Technological College.

#### ARTICLE II

SECTION 1. The objects of the Association of Women Students shall be:

1. To promote and maintain the highest cultural, educational, and social standards of collegiate life in all women's activities on campus by providing, for the purpose of mutual help and benefit, open discussion of matters affecting college women; by devising, administering, and by acting as a coordinating body of all the women's organizations on campus in setting the standards of living and working together on the campus.
2. To develop leadership, school spirit, and the sense of individual responsibility among the women students by encouraging participation in student government and college activities, and in so doing develop a strong student government and a mutual understanding between the administration and the students.
3. To promote high scholarship among the women students at Texas Tech.
4. To strengthen the spirit of unity and fellowship among the women students and to encourage closer relationships between town girls and the girls on campus.

SECTION 2. The Association of Women Students shall operate under the powers set forth in this Constitution.

SECTION 3. Additional powers will be granted the council each year according to the progression and capability exhibited by the previous council and Association.

#### ARTICLE III Members

SECTION 1. Every woman student enrolled at Texas Tech shall be a member of the Association and shall pay dues at the time of registration.

SECTION 2. The Dean of Women shall be an ex-officio member of the organization. The Dean of Women or her representative shall act as an advisor to the Association.

SECTION 3. Each woman student of Texas Tech who resides in a private home is also eligible for membership in the "Town Girls Club." (This organization is set up for town girls, in the hope that through such an organization a closer unity can be gained between the town girls and the girls residing on the campus.)

#### ARTICLE IV

SECTION 1. The following officers shall serve as the executive body of the Association of Women Students and the AWS general council.

SECTION 2. Officers shall be:

1. President
2. First Vice President
3. Second Vice President
4. Third Vice President
5. Secretary
6. Treasurer
7. Judiciary Chairman

8. Intercollegiate Association of Women Students Representative

SECTION 3. Qualifications for officers:

1. They shall maintain a 2.5 overall grade point average for all the time they have been in school and a 2.5 grade point average for the previous semester at Tech.
2. They shall have been enrolled in Tech for at least one semester before being nominated or elected.
3. The president, second and third vice presidents and the IAWS representative shall have been a member of the AWS Council for at least a year previous to the term they serve as an officer. The third vice president must be in summer school or from the surrounding area.
4. The president shall be of senior classification when she serves. She must have completed 96 credit hours at the time of taking office in the fall.
5. The vice presidents, secretary, treasurer, and IAWS representative shall be at least a junior at the beginning of their term of office.
6. The Judiciary Council chairman shall be at least a junior at the beginning of her term of office, and have served on Judiciary Council, Panhellenic Judiciary Council, or Advisory Council at least one year.
7. The first vice president shall have been a member of the AWS Council or WRC for a period of at least a year previous to her term of office.

SECTION 4. Elections

1. The officers shall be elected during the spring semester by the women students of the college, and shall preside over at least one general council meeting before the conclusion of that semester.
2. The term of office for officers and members of the AWS Council shall be one school year.
3. A nominating committee composed of all past and present members of the council who have completed 96 credit hours shall prepare a slate of officers to be presented at a nominating assembly, where other nominations of qualified girls may be made from the floor.

#### ARTICLE V Duties of Officers

SECTION 1. President

1. It shall be the duty of the president to preside at the meetings of the Association.
2. She shall exercise supervision over the activities of the Association and be alert to the needs of the campus.
3. She is also president of the AWS Council and presides over this governing body.
4. It shall be the duty of the president to see that the provisions of the Constitution are carried out.
5. She shall have the power to appoint the chairman of all AWS committees with the approval of the executive committee.
6. She shall act as ex-officio member of all committees.
7. She may call a meeting of the council or of the Association whenever necessary.

SECTION 2. First Vice President

1. She shall preside at the meeting of the Women's Residence Council.



2. She shall keep a complete record of the activities of the Women's Residence Council and shall make regular reports to the AWS Council.

#### SECTION 3. Second Vice President

1. It shall be the duty of the vice president to preside in the absence of the president.
2. She shall assist the president in the direction of the affairs of the Association and the Council and shall assume the duties of the president in case the office of the president is left vacant.
3. She shall plan and supervise the AWS Orientation Program for New Women Students and shall act as chairman of the "Big-Little Sister" committee.
4. She shall supervise the AWS elections.

#### SECTION 4. Third Vice President

1. It shall be the duty of the third vice president to be in charge of and supervise AWS activities during the summer.
2. She shall compile, address, and mail Tech Tips to all entering fall freshmen and transfer students.

#### SECTION 5. Secretary

1. It shall be the duty of the secretary to keep the records of the actions and meetings of the Association and the Council.
2. She shall take care of all council correspondence.
3. She shall file and preserve all reports and papers of the Association.
4. It shall be the duty of the secretary to report and publicize all activities of AWS through "The Toreador," town papers, campus bulletins, alumni news, and in any other possible way.

#### SECTION 6. Treasurer

1. It shall be the duty of the treasurer to collect all funds and fines for lack of attendance and care for all bills authorized by the advisor.
2. She shall have charge of the Association funds.
3. She shall keep a strict and permanent record of all expenses.
4. She shall make a financial report annually and present a proposed budget for the following year. She shall act as ex-officio member of all committees involving finance.

#### SECTION 7. Judiciary Chairman

1. It shall be the duty of the Judiciary Chairman to preside at Judiciary Council meetings, and to act as liaison between Judiciary Council and AWS.

#### SECTION 8. IAWS Representative

1. The IAWS representative shall be in charge of the clearing house at Texas Tech and she shall take care of all correspondence with member schools of IAWS.

#### SECTION 9.

1. The AWS representative from organizations shall be a sophomore if possible.

### ARTICLE VI

#### AWS General Council

SECTION 1. The purpose of the council shall be to serve as a governing body for the Association and to act as a coordinator of all campus activities engaged in by women students.

SECTION 2. The council shall be composed of eight elected officers, one representative from the Freshman Class and each of the recognized women's organizations on the Texas Tech campus; one vote shall be accorded each member group and officer.

SECTION 3. The council shall meet twice a month unless otherwise stated.

SECTION 4. In case the office of the president is left vacant, the second vice president shall become president, and a new vice president shall be nominated and elected by

the council. If for any reason a vacancy occurs in any of the other elected offices, the council shall nominate and elect someone to fill the vacancy.

SECTION 5. Scholastic eligibility for the members of the council shall be a 2.0 overall grade point average, as well as a 2.0 grade point average for the preceding semester.

SECTION 6. If it is impossible for a council member to attend a meeting, it is required that she send an alternate from her organization. This alternate shall not be a member who is already on the council; i.e., no woman shall represent two organizations at a council meeting.

SECTION 7. If any organization is not represented by either the regular representative or an alternate, the fine shall be \$1.00, paid by the organization.

SECTION 8. Members of the council who are absent a total of three (3) council meetings in any one semester without adequate excuses and the attendance of an alternate in her place shall be considered inactive. The representative shall send a written excuse with her alternate, the validity of which will be decided by the Executive Council. The secretary will notify the organization of the inactivity of its representative and the organization should send a new regular representative.

SECTION 9. The secretary should be notified by the absent member before the following meeting of the reason for her absence.

### ARTICLE VII

#### Women's Residence Council

#### SECTION 1. Membership

1. The first vice president of AWS shall serve as chairman of the Women's Residence Council.
2. Other members of the council shall consist of the vice presidents and presidents of each residence hall and the president and house director of Casa Linda.
3. The office of the secretary-treasurer shall rotate in alphabetical order among the residence halls and Casa Linda, the secretary being the vice president and the treasurer being the president.

#### SECTION 2. Duties of Women's Residence Council

1. The Women's Residence Council shall act in collaboration with the Dean of Women and Legislature on matters of group living.
2. The Women's Residence Council shall serve as the policy making body of the women's residence halls, and shall submit recommendations to be approved by the AWS Council and the Dean of Women.

### ARTICLE VIII

#### Amendments

SECTION 1. The Constitution may be amended at a regular meeting of the Council of the Association of Women Students provided that there are two-thirds of the members present and that the amendments have been read at the council meeting preceding the one at which the vote is taken.

SECTION 2. The proposed amendments must be posted immediately after the meeting at which they are presented to the council.

### ARTICLE IX

#### Committees

SECTION 1. The nominating committee shall be composed of the past and present members of the council who have completed 96 credit hours.

SECTION 2. There shall be an executive committee composed of all the officers of AWS and they shall carry out the business of the Association as designed in this constitution,

and as directed by the General Council, and shall act as official spokesman for the Association when appropriate, and shall make whatever decisions are necessary to insure the welfare of the Association.

SECTION 3. There shall be such other committees as the Association or council may demand.

## AWS Activities Point System

#### TOREADOR

editor, 20  
asst. editors (managing, news, campus, issue, sports), 15  
business manager, 18

#### LA VENTANA

Editor, 20  
assist. editor, 15  
section editor, 10

#### SORORITIES

president, 20  
vice president (if not pledge trainer), 10  
recording secretary, 6  
corresponding secretary, 10  
treasurer, 15  
pledge trainer, 15  
social chairman, 12  
rush chairman, 7  
scholarship chairman, 12  
other officers or committee chairmen, 5  
officers of pledge class, 8  
member or pledge, 4

#### AWS

president, 20  
first vice president, 15  
other executive officers, 11  
WRC secretary, 5  
WRC treasurer, 5  
rep. from organizations, 4 (except residence hall & freshman class rep.)  
president's hostesses chairman, 11  
president's hostesses secretary, 10  
president's hostesses, 1  
chairman of Dad's Day, 8  
chairman of Women's Day, 10  
committee chairmen, 5

#### TECH UNION

president, 20  
vice president, 13  
public relations, 13  
personnel, 13  
secretary-treasurer, 13  
executive asst., 13  
committee chairman, 10  
asst. committee chairman, 8  
committee secretary, 6  
committee member, 4

#### BSO

president, 18  
vice president, 10  
secretary, 10  
treasurer, 6  
representative from organization, 1  
executive council (except officers already listed, 3  
committee chairman, 3

#### RESIDENCE HALLS

president, 15  
vice president, 10  
AWS representative, 10

### ARTICLE X

#### National Convention

SECTION 1. The expenses of the official delegates to the National Convention shall be paid by the Association of Women Students.

SECTION 2. These delegates shall be the incoming president and IAWS representative, the advisor, and/or their alternates which shall be selected by the executive committee.

other officers, 5  
legislator, 5  
advisory council, 3  
chairman, (such as social), 5  
freshman rep. (junior legislator), 3

#### STUDENT BODY

president, 25  
other major offices, 20

#### STUDENT COUNCIL

representative, 8

#### FRESHMAN CLASS

president, 10  
vice president, 10  
secretary-treasurer, 10  
AWS representative, 10

#### FRESHMAN COUNCIL

representative, 8

#### PANHELLENIC

president, 15  
vice president, 13  
rush chairman, 12  
activities chairman, 13  
committee chairman, 7  
secretary, 7  
treasurer, 7  
representative, 3

#### JUNIOR PANHELLENIC

all officers, 5  
members, 2

#### SPEECH PLAYS, DEPARTMENTAL SHOWS

all participants, 9 (for each show)

#### MORTAR BOARD

president, 15  
vice president, 10  
projects chairman, 10  
other officers, 6  
member, 4

#### JUNIOR COUNCIL

president, 10  
projects chairman, 8  
other officers, 4  
member, 2

#### WSO

president, 15  
vice president, 12  
projects chairman, 10  
pledge trainer, 9  
other officers, 7  
member or pledge, 4  
officers of pledge class, 6

#### CHEERLEADER, 10

Freshman cheerleader, 5

#### ROTC SWEETHEART, 5



**ANGEL FLIGHT**

president, 11  
drillmaster, 9  
other officers, 7  
member or alternate, 5

**TECH CHOIR, 4****TECH SINGERS, 3****BAND**

member, 3  
majorette, 3  
officers, 4

**CHAIRMAN OF HOME ECONOMICS OPEN HOUSE, 10**

committee chairman, 5

**HONORARIES**

president, 8  
other officers, 6  
committee chairman, 4  
member, 1

**DEPARTMENTAL AND MUTUAL INTEREST CLUBS**

president, 7  
other officers, 5  
committee chairman, 3  
member, 1

**RELIGIOUS CLUBS**

president, 8  
committee chairman, 4

other officers, 6  
member, 1

**WORKING HOURS**

1 point per 2 hrs. work a week

**GENERAL:**

1. The point system is based on time consumption, rather than on prestige.

2. Maximum number of points an upperclassman may hold at any one time is 35. Freshman women are limited to 25 points maximum. This is not cumulative. The points are in effect only as long as the office is held.

3. No woman may hold more than one 20-point office at one time.

4. If a woman is an officer, chairman or has another office for which points are given, she does not count her points for membership, also. The membership points are counted if she has no position.

5. Any woman who wishes to appeal her case, feeling she has substantial reason to deviate from the maximum points allowed, may appear before Judiciary Council. The Council will decide on each case individually.

6. The purpose of the point system is to benefit the individual, the organization, and the campus. It is to avoid having too few students accept all the responsibility, to enable those who are capable to develop their abilities, to keep outside activities from interfering unduly with the student's academic program, and to encourage each woman student to spend her time on activities in which she is most interested and to choose her activities carefully.

Printed By  
THE TEXAS TECH PRESS  
Texas Technological College  
Lubbock







## *Women's Creed*

I believe in the women of this college, in their ideals and sincerity of purpose.

I believe in my ability to use wisely the privileges of self government and will strive to accept its responsibilities.

I believe that my purpose in college is to learn to think, I will present my best efforts in seeking what is true and will regard the classroom as a place for unquestionable honesty.

I believe in myself. Recognizing both my strengths and weaknesses, I will strive to follow the Rule of Life — that of charity toward others and service to all.