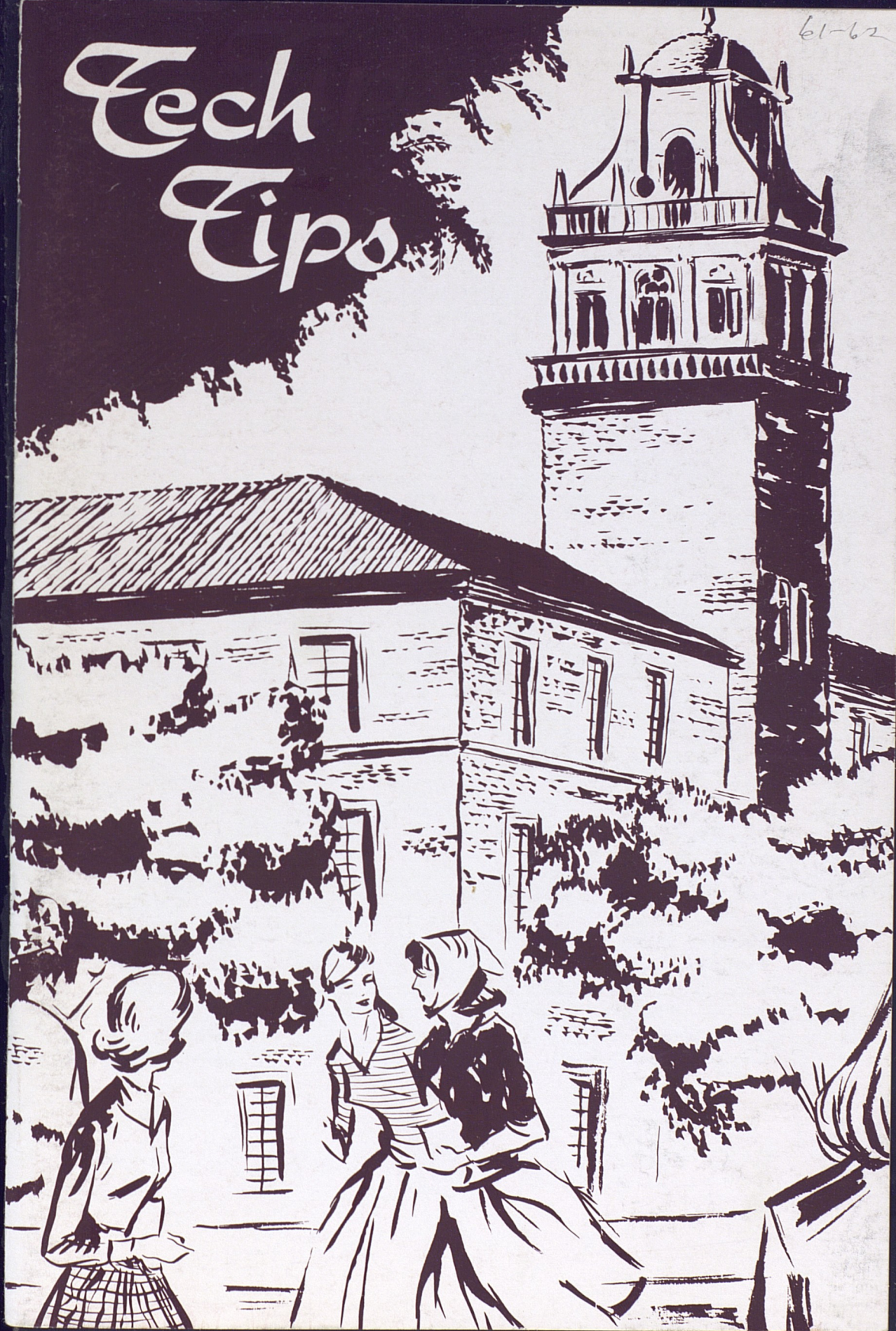


# Tech Tips

61-62





THE ASSOCIATION OF WOMEN STUDENTS  
and  
PANHELLENIC COUNCIL  
of  
TEXAS TECHNOLOGICAL COLLEGE

presents

# TECH TIPS

*A Handbook for Women Students*  
1961-62

Staff: Theta Sigma Phi

|                        |   |
|------------------------|---|
| Editor .....           | Dot Bowles  |
| Assistant Editor ..... | Ellen Venable   |
| AWS Section .....      | Donna Christopher   |
| WRC .....              | Jeannie Bookout   |
| Honoraries .....       | Alayne Kornblueh  |
| Sororities .....       | Charlena Chandler, Lynn Buckingham                                |
| Proofs .....           | Mary Helen Fairly, Frances Taylor<br>Katy Hunter, Carolyn Jenkins |
| Photographers .....    | Dahlia Brazell, Freda McVay                                       |
| AWS Advisors .....     | Sue Mims, Donna Christopher                                       |





## Contents

|  |    |
|--|----|
| Dean's Letter .....                          | 3  |
| Association of Women Students Officers ..... | 4  |
| Association of Women Students .....          | 5  |
| Town Girls Club .....                        | 10 |
| Women's Service Organization .....           | 11 |
| President's Hostesses .....                  | 12 |
| Residence Halls .....                        | 13 |
| Casa Linda .....                             | 19 |
| Doak Hall .....                              | 20 |
| Drane Hall .....                             | 21 |
| Horn Hall .....                              | 22 |
| Knapp Hall .....                             | 23 |
| Weeks Hall .....                             | 24 |
| West Hall .....                              | 25 |
| Women's Residence Council .....              | 26 |
| Honoraries .....                             | 27 |
| Alpha Lambda Delta .....                     | 29 |
| Junior Council .....                         | 29 |
| Mortar Board .....                           | 30 |
| Mu Phi Epsilon .....                         | 30 |
| Phi Gamma Nu .....                           | 31 |
| Phi Upsilon Omicron .....                    | 31 |
| Tau Beta Sigma .....                         | 32 |
| Theta Sigma Phi .....                        | 32 |
| Sororities .....                             | 33 |
| A Look at Panhellenic .....                  | 34 |
| Alpha Chi Omega .....                        | 44 |
| Alpha Phi .....                              | 45 |
| Delta Delta Delta .....                      | 46 |
| Delta Gamma .....                            | 47 |
| Gamma Phi Beta .....                         | 48 |
| Kappa Alpha Theta .....                      | 49 |
| Kappa Kappa Gamma .....                      | 50 |
| Phi Mu .....                                 | 51 |
| Pi Beta Phi .....                            | 52 |
| Sigma Kappa .....                            | 53 |
| Zeta Tau Alpha .....                         | 54 |
| Appendix .....                               | 55 |
| Constitution and By-Laws of AWS .....        | 55 |
| AWS Activities Point System .....            | 57 |

## Introducing . . . .



Hello there,

I am so happy that you are going to be with us this year. My office is in the Administration Building. I hope that you will drop by to see me and the members of my staff.

We are looking forward with a great deal of pleasure to knowing each one of you personally.

Sincerely,

Florence Phillips  
Dean of Women





*Left to right: Betty Davis, IAWS; Ouida Daugherty, president; Nancy Jo Mankins, treasurer; Kay Porter, third vice president; Glenda Johnson, second vice president; Rowena Williams, secretary; Anne Weaver, judiciary chairman; and Judy Miller, first vice president.*

Dear Miss Techsan,

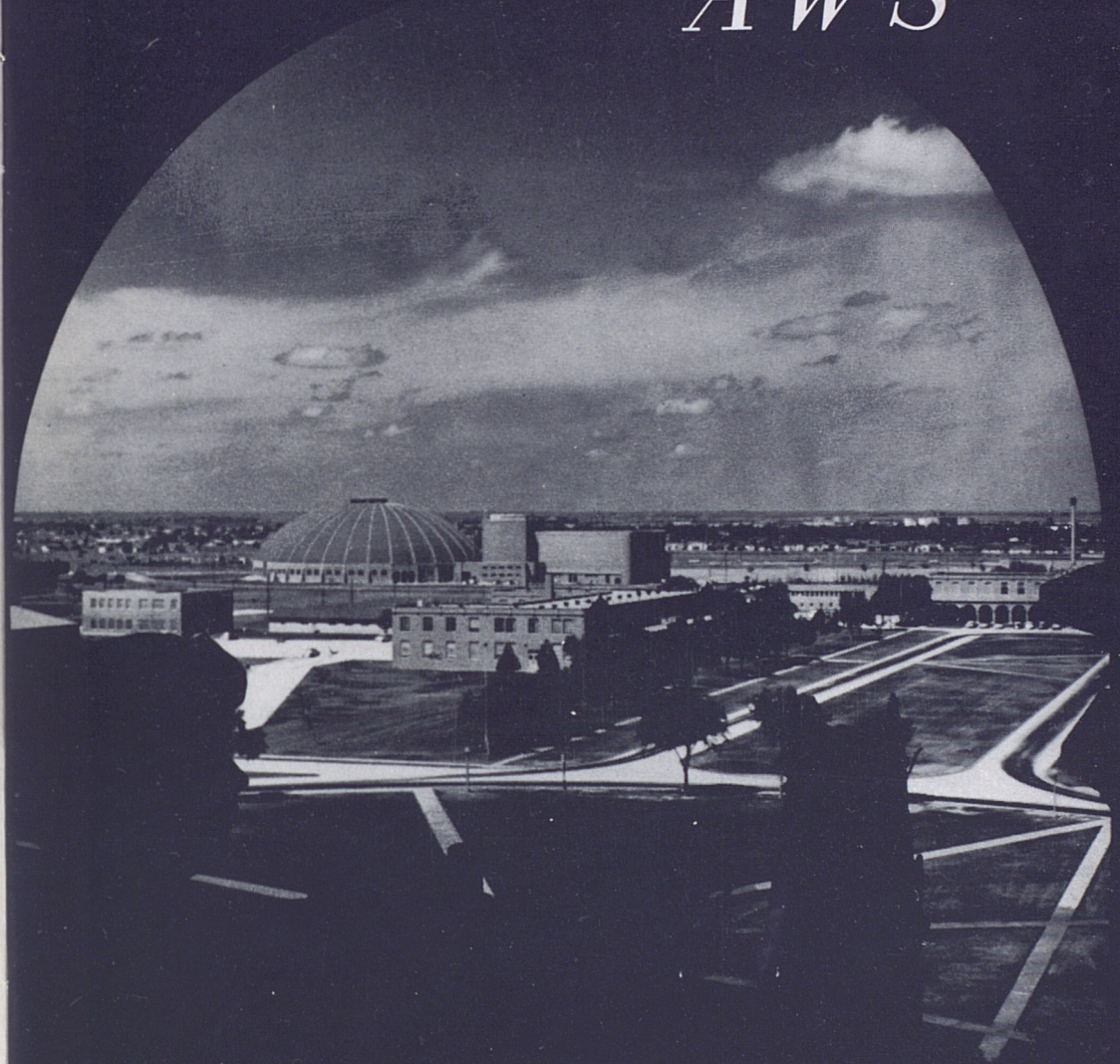
Welcome to Texas Tech on behalf of the Association of Women Students. You are most fortunate in that you have the privilege of attending one of the outstanding colleges in America. You will find dedicated teachers, trained counselors, cooperative administration, and friendly students who are ready and anxious at all times to guide and assist you in every way possible.

Texas Tech is growing by leaps and bounds; and as a member of the 1961-62 student body, you will be a part of its dynamic growth, share its spirit and enthusiasm and take part in its many activities.

As your college years progress you will have countless wonderful experiences, create many lasting friendships, and increase your knowledge and desire for knowledge. AWS was formed to serve you as you advance in these experiences. We hope that we may truly be of service to you in the coming year and that this year may be one of your happiest!

Ouida Daugherty  
President, AWS

AWS





## A TECHSAN'S LIFE

College means a number of things to you. It means fun-times, work and recreation, plus new friendships and new ideas. You are in for an enriching experience. And you'll want to take advantage of all sides of college — mental, social and spiritual.

Many individuals and organizations are eager to help you, especially AWS (Association of Women Students), WRC (Women's Residence Council) and Panhellenic Council.

The college campus offers so many avenues of activity, that it is easy to lose sight of our primary objective and become completely "wrapped up" in extra-curricular activities. So, remember, study comes first.

The student has few regulations outside of class hours, and must learn to budget his own time. A daily schedule allotting time for study and relaxation will be of valuable service, and you will gain real satisfaction, knowing that you have given the necessary time and effort to your studies.

A person with the ability to concentrate is well on the road to good study habits. Tips in developing this ability are: divide your study hours into short concentrated periods; keep your mind on your work; read rapidly; allot each piece of work a certain time and try to complete it in that time; work in surroundings conducive to concentration.

If you and your roommate study together in your room, it is wise to slip a "Do Not Disturb" sign over the door knob. As a freshman, 8:30 p.m. hours will help you give the proper time to studies.

By practicing good study habits and reviewing thoroughly before exams, the grade reports you send home will make you and your parents proud. So study hard, then relax!

College is filled with things to do and people to meet. Dating, campus

organizations, departmental clubs, dorm chatter, cokes in the Union (Student Union Building) — all these are avenues of relaxation.

## A KEY TO CLOTHES

Now, what to wear — and when? Remember that simplicity is the key word to the Techsan's taste in clothing. For your convenience and easy access, note the Techsan Clothes Chart (page 7).

Other incidentals are brunch coat or short house coat; slacks; bedroom slippers; cottons for fall and spring; and a heavy coat for winter. The West Texas wind doth blow — and we usually have snow and rain, so bring overshoes. Incidentally, headscarves are a must at Tech to protect curls from Old Man Weather.

Be sure to bring a white dress, too. Each spring AWS sponsors Women's Day, and all coeds wear white.

The Techsan wears just enough make-up to give her a "wide-awake" look at that 8 a.m. class, and always dresses to suit the occasion. To complete the picture, she conducts herself properly, remembering that she represents her college.

## THE GENTLE ART

Equally important to the Tech coed as being well-groomed and well-dressed are manners.

We have learned that one of the best ways to get a lot of introductions is to give a lot of them. In order to introduce and meet people with poise, you will need to practice the techniques. If you want to brush up on the "how and when" here are some tips that may prove beneficial.

Always mention the woman's name first if a man and a woman are being introduced. Men always rise for introductions. Women rise only when

## A TECHSAN'S CLOTHES CHART

| EVENT                  | DRESS             | HAT          | SHOES*           | PURSE        | GLOVES      | COAT      |
|------------------------|-------------------|--------------|------------------|--------------|-------------|-----------|
| Show Date              | Sweater-Skirt     | Never        | Heels or Flats   | A little one | No          | If needed |
| Coke Date              | Sweater-Skirt     | Never        | Flats            | What for?    | No!         | Maybe     |
| Dinner Date            | Date Dress        | Probably Not | Heels            | Of Course    | Probably    | If needed |
| Church                 | Suit              | Yes          | Heels            | Yes          | Sure        | In winter |
| Teas                   | Date Dress        | Yes          | Heels            | Yes Ma'am    | Absolutely  | If needed |
| Football Games         | Sport Dress--Suit | Sometimes    | Heels or Flats   | Optional     | Maybe       | Usually   |
| Formal Dance           | Something Swishy  | Forget It    | Sandals or pumps | Evening Bag  | Yes Usually | Wrap      |
| Class                  | Casual            | Never        | Loafers          | Probably     | Nope        | If needed |
| Symphonies Stage shows | After 5 dress     | None         | Heels            | Yes          | Yes         | If needed |

\*comfortable

being introduced to an older woman, or when they wish to show special respect to a distinguished person. A woman may shake hands with a man, but must remember to extend her hand first.

When introducing a large group, mention names of men and women in the order they are seated or standing. In acknowledging an introduction, it is courteous to repeat the name (helps you remember it, too) and simply say "Hello" or "How do you do." A smile can express your friendliness better than words.

Friendliness on our campus extends to the faculty and older people. You can't underestimate what your courtesy and kindness to all older people will do for you.

Remember, as you're packing for Tech, to put in a smile and a friendly spirit, and take them out first when you arrive.

## THE COMMON GROUND

One more phase of college deserves special mention — spiritual growth. Many religious groups, affiliated with

Lubbock churches and located off-campus, offer worship, study and fellowship.

These groups include the Baptist Student Center, Canterbury Association (Episcopal), Disciples Student Fellowship (Christian), Newman Club (Catholic), Wesley Foundation (Methodist), Presbyterian University Center, and the Bible Chair (Church of Christ). You are invited to attend the group of your choice.

This last phase of your growth is best expressed in the AWS Women's Creed — "that of charity toward others and service to all."

## AWS IS FOR YOU

When you enroll at Tech, there is one organization of which you as a woman student automatically become a member. This is the Association of Women Students — known more simply as AWS.

The purpose of AWS is to help you and other Tech coeds to get the greatest benefits from college life by promoting unity and fellowship among women students and by providing op-



portunities for leadership in worthwhile activities on campus. AWS acts as a coordinating body of all women's organizations in setting the standards for living and working together on campus.

## IAWS

Tech's AWS is a member of a large national association—the Intercollegiate Association of Women Students. Its membership is comprised of women's governing units in over 100 colleges and universities from coast to coast.

The purposes of IAWS are to foster the exchange of ideas and information on subjects of mutual interest to the member schools; to encourage a growing awareness of the responsibilities of women students in local, national and international affairs; and to work for the improvement of women's governing groups.

## AWS COUNCIL

Tech's AWS is governed by the AWS Council. This Council is composed of eight officers elected by the women on campus, one representative from each women's organization, and a representative from each class. The Executive Council is comprised of eight officers: president, first vice president, second vice president, third vice president, secretary, treasurer, judiciary chairman, and IAWS representative. To understand exactly how AWS works, you are invited to attend any regularly scheduled Council meeting.

## PLANNED ESPECIALLY FOR YOU

"Never a dull moment . . ." And so it is with AWS. Its ever expanding activity program includes:

**BIG SISTER — LITTLE SISTER PROGRAM** — You will be adopted as a little sister long before you arrive on campus. Your big sister will write you during the summer and be here in the fall to help you get acquainted with campus life and to give you the benefits of her college experience.

**HOWDY PARTY** — This event is scheduled as a "get-acquainted" period during orientation week. All the women leaders on campus will be at this party to welcome you and tell you about extracurricular activities and women's organizations at Tech.

**FRESHMAN ORIENTATION PROGRAMS** — Each fall a series of programs are conducted concerning social problems such as manners, grooming, and dating. AWS Orientation Committee, the planning unit for these programs, builds the series around your wishes, and your ideas are especially welcome.

**DADS' DAY** — During the fall Dads are honored by a full day of activities including the football game and a welcoming coffee. AWS Dads' Day Committee and Alpha Phi Omega, national service fraternity, work together on the program.

**LEGISLATORS' WORKSHOP** — This fall a training retreat for all legislators in the residence halls will be conducted. Its purposes are to promote and improve student government in the halls and to evaluate the previous year's work.

**PENNY-A-MINUTE NIGHT** — Here's your chance to stay out one hour past closing hours — at the rate of a penny a minute. AWS usually sponsors two such nights each year.

**WOMEN'S DAY** — As a recognition day for women on our campus during the spring, you are urged to wear white to commemorate this special day. Tech's Outstanding Woman of the Year is elected and pre-

sented at the Women's Day banquet that night.

Other recognitions include installation of AWS officers for the coming year, introduction of the new members of Junior Council and Mortar Board, introduction of the new officers and legislators in the residence halls and scholarship recognitions.

## AWS ACTIVITY SYSTEM

In order to distribute the major offices and responsibilities of individual students more evenly, AWS has an activity point system. (See Appendix) The system is based on time consumption rather than prestige, and the maximum number of points is 25 for freshmen and 35 for upperclassmen.





*Back row, left to right: Kay Armstrong, AWS representative; Ruth Latch, Town Cryer; Sharon Frost, president; and Libby Malley, first vice president. Front row, left to right: Nornita Mears, publicity; Dixie Ward, parliamentarian; Harriet Watts, second vice president; Rozanne Cannon, treasurer; and Karon Kinard, secretary.*

## Town Girls Club

Girls who live off-campus sometimes worry about keeping in touch with campus affairs. Outside the classroom they may have little opportunity to take part in the many activities that are a part of college life. Town Girls Club was organized in 1953 with this in mind. Meeting at weekly luncheons in the Student Union these girls find many common interests and can catch up on the news of campus "doings."

Members of the faculty and administration are frequent luncheon guests and their informal talks with the girls help build closer ties with the college. Programs are scheduled that make use of talent among the girls as well as talent outside the club.

In honor of Mother's Day, those girls who lived at home invited their mothers to a luncheon. Those whose homes were not in Lubbock invited a friend or instructor who was a mother. Activities such as these greatly aid in making Tech seem more of a "home away from home."

## Women's Service Organization

Purpose—To assemble women in the atmosphere of service to the college campus and community

Colors—Maroon and White

Insignia—The letters WSO in gold lettering

Flower—White Rose

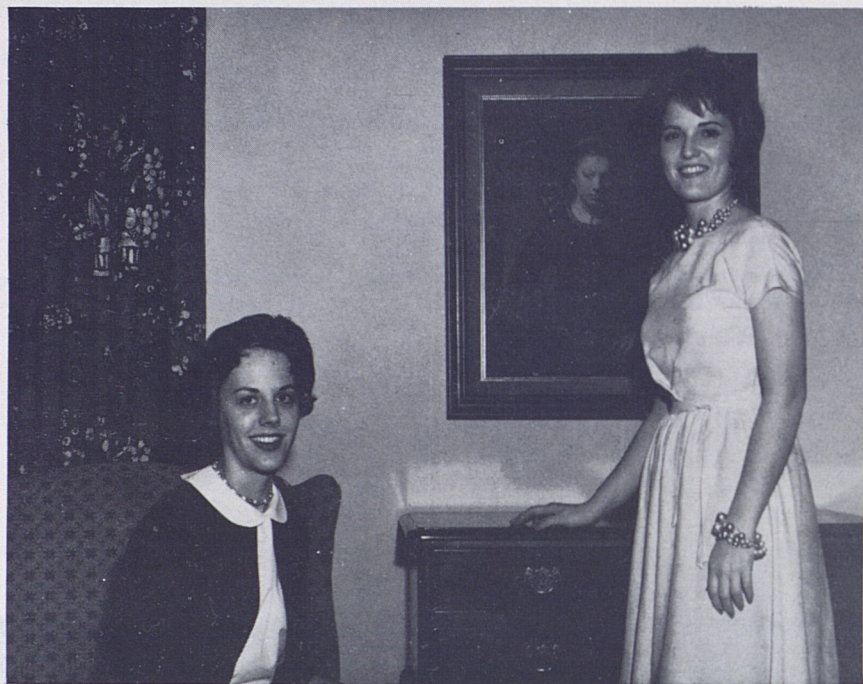
Outstanding Projects—Homecoming activities, spring elections, Mile of Pennies for World University Service, College Recognition Service, Annual Bicycle Races

Nickname—WSO



*Seated is Janice Aboud, president; from left to right: Annette Sims, vice president; Mary Keeter, parliamentarian; Theda Martin, pledge trainer; Barbara Ford, corresponding secretary; Sandra Cornell, treasurer; and Jerry Sizemore, recording secretary.*





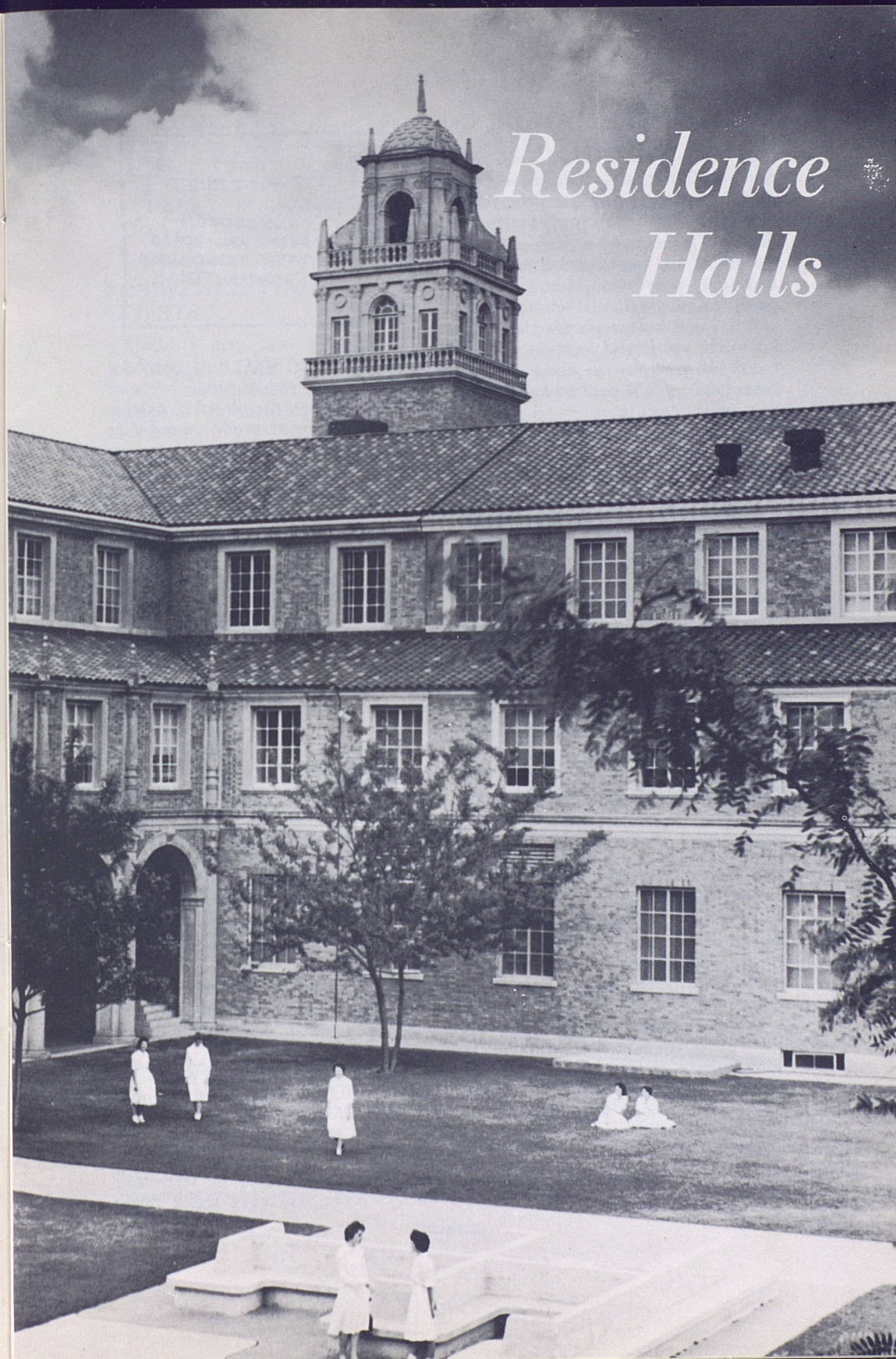
*Left to right: Ellen Warren, chairman; and Barbara Sudduth, secretary.*

## *President's Hostesses*

Visitors at Texas Tech's official events are greeted by 32 of the college's coeds, members of the President's Hostesses.

These coeds escort official visitors on the campus and are prepared to answer questions concerning the college campus.

The hostesses are chosen by the AWS executive council, their sponsor, President Goodwin and Vice President Pennington.



## *Residence Halls*



## BE IN THE KNOW

So you're moving into a Tech residence hall for the first time. No doubt, there are many questions you'd like answered, so glue your eyes to the next few pages.

First of all, you're concerned about furnishing your room. Most girls wait until their arrival at Tech to choose curtains and bedspreads for then they know the colors and location of their rooms. If you plan to bring curtains from home, you'll need to know window measurements.

Doak Hall ..... 43 3/4 x 69 inches  
Drane Hall ..... 41 x 68 inches  
Horn Hall ..... 40 x 66 inches  
Knapp Hall ..... 40 x 66 inches  
Weeks Hall ..... 34 1/2 x 68 1/2 inches  
West Hall ..... 43 3/4 x 69 inches

Walls are made of plaster material thus necessitating the use of curtain rods which do not require nails. Suction cup rods may be purchased at Lubbock department stores.

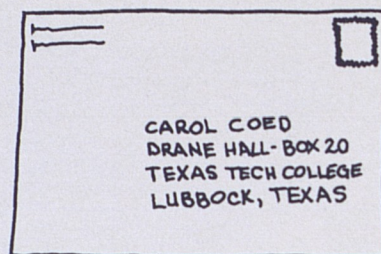
Some suggested objects to bring from home include iron, desk light, pillow, broom, mop, bulletin board, radio, record player, throw rugs, and alarm clock. If you're living in Weeks, you will not need the desk light or bulletin board, as they are built in.

## HERE'S HOW IT'S DONE

Your MAIL is put up in a mailbox assigned to you when you register in the residence hall. Switchboard operators and office girls put up the mail which is delivered once a day. Outgoing mail is collected at this time.

You will be notified by the Campus Post Office in the Administration Building if you have an insured package, registered letter, etc. Packages which are not registered are delivered to the hall.

Mail addressed to you should include your residence hall and your box number.



The DINING HALL is open for meal service as follows:

|           | Monday through Saturday | Sunday     |
|-----------|-------------------------|------------|
| Breakfast | 7:00- 8:00              | 8:00-8:45  |
| Lunch     | 11:45-12:30             | 12:15-1:00 |
| Dinner    | 5:30- 6:15              | No Meal    |

There are LAUNDRY and drying rooms in each women's hall with automatic washers and dryers for your use. A quarter is charged to use washing machines and a dime for rotating dryers.

All needed REPAIRS should be reported to the switchboard or office. Each hall has its own Mr. Fixit to make repairs and fill such requests as replacement of electric light bulbs, etc.

A large STORAGE room is provided in each hall where trunks and luggage are stored. Check with your hall office for the key.

Local TELEPHONE CALLS are accepted from 8 a.m. to 10 p.m. through the hall switchboard. Pay phones in the game room or lobby of the halls are available at all times. Calls should be limited to five minutes.

LONG DISTANCE calls may be made only on the pay phones. They may be received, however, through the switchboard.

Familiarize yourself immediately with the BUZZER SYSTEM so you'll know what to do when that first one comes. The girl in the room whose last name comes first alphabetically will have the A buzz and the other one will have the B buzz.

A BUZZES are:

1 long ..... Telephone  
1 long, 1 short ..... Lounge

B BUZZES are:

2 long ..... Telephone  
2 long, 1 short ..... Lounge

## RESIDENCE HALL GUESTS

Students may have guests in the residence halls only on Friday and Saturday nights except by special permission given by the Assistant Dean of Women. All overnight guests must register in the hall office and a guest fee (with the exception of mothers of residents) of 50 cents is charged each guest. Guests maintain the hours of their student hostess. The hostess is responsible for the conduct of all guests and is also assigned any late minutes her non-resident guest might accrue. Guests sign in and out of the residence hall on a guest sign-out sheet.

When girls are guests in another hall the same procedure for signing out is to be observed as for any overnight in Lubbock. Resident students while guests in other halls are responsible for their own late minutes and are charged a 50 cent fee.

## RESIDENCE HALL ASSOCIATION

Every women's hall resident is automatically a member of the residence hall association, which has as its purpose as stated in the constitution, "to equip each student for active and cooperative citizenship through participation in democratic self-government."

Texas Tech's administration believes in student government and is glad to extend the privileges of self-discipline as far as the students themselves are capable of accepting the responsibilities which this incurs.

## RESIDENCE HALL LEGISLATURE

The official governing body of each hall is the Legislature, composed of girls elected each spring by the residence hall association. They live in specified rooms on each wing of the hall and represent the viewpoint of the girls of that wing in legislator meetings and are responsible for the welfare of their particular wing in the hall. They also relay notices from the counselor, dean's office, and AWS.

Legislator meetings are held every two weeks, alternating Monday nights with the Advisory Council. Wing meetings are held at 10 p.m. the Tuesday following legislator meeting. All residents are to attend wing and hall meetings.

## THE ADVISORY COUNCIL

The Advisory Council is the agency through which the rules of the hall are interpreted. This group advises the girls on hall regulations and policies. In each hall it is set up under the hall's student government. The purpose of this selected body is to hear cases of girls who have broken hall regulations.

## THE JUDICIARY COUNCIL

The agency for interpreting AWS regulations is the Judiciary Council. Cases referred by advisory council or those involving general college regulations are handled by Judiciary Council composed of four AWS council members and one member of a residence hall advisory council. Chairman of Judiciary is an elected AWS officer.



## RESIDENCE HALL REGULATIONS

### AWS AND WOMEN'S RESIDENCE COUNCIL

For safety and service, students are required to sign out if absent from the hall after 7 p.m. Each girl must sign in and out for herself. In emergency, or if you have failed to sign out, you may call your counselor or hall office to sign you out.

Do not open any doors before 6:30 a.m. or use the side doors after 7 p.m.

#### A. REGULAR CLOSING HOURS ENTERING FRESHMEN

(until second semester)

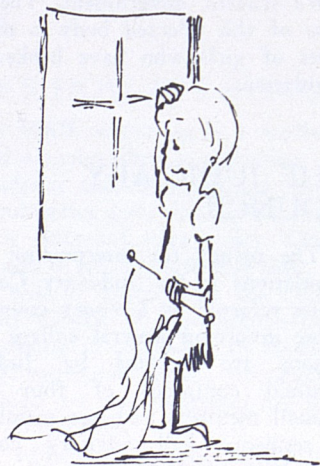
Mon.-Thurs. Friday Saturday Sunday  
8:30 p.m. 12 p.m. 1 a.m. 11 p.m.

#### UPPERCLASSMEN

10 p.m. 12 p.m. 1 a.m. 11 p.m.

#### SENIORS

11 p.m. 12 p.m. 1 a.m. 11 p.m.  
In order to be classified for these hours a sophomore must have 32 hours with 32 grade points; a junior must have 64 hours with 64 grade points; and a senior must have 96 hours with 96 grade points.



#### B. WEEKEND AND OVERNIGHT SIGN OUTS

A General Permission card signed by your parents, must be on file in the residence hall office before you are permitted to sign out overnight. It is each student's responsibility to know the permissions granted her by her parents.

Students do not spend week nights out of town or at home except in an emergency and with special permission from the hall counselor and/or the student's parents. Weekend nights are Friday and Saturday nights. All special permissions must be sent directly to the counselor from the parents. All sign outs must be approved.

##### (1) WEEKEND OUTSIDE LUBBOCK

Fill out weekend slips in office before 8 p.m. File in box provided for this record. Sunday is included in the out-of-town weekend.

##### (2) WEEKEND OR OVERNIGHT IN LUBBOCK

Fill out form in hall office for Lubbock sign-outs before 4 p.m. so that your hostess may be contacted for confirmation of the invitation. Students may stay only with families or married couples in Lubbock. Students must make sure the hostess has been contacted and her sign-out card approved by the residence hall before she leaves. Freshmen are permitted one week night Monday through Thursday per semester in Lubbock. Upperclassmen have three week nights per semester.

##### (3) OVERNIGHTS FOR LUBBOCK FRESHMEN WHO ARE HALL RESIDENTS

Lubbock freshmen who are hall residents are allowed one regular week night out in town a semester plus only three week nights a semester at home.

#### C. RETURN FROM VACATION OR WEEKEND

All students return to the hall from an official college holiday or weekend by 11 p.m. If in an emergency a student is delayed, she should call her counselor so that she will know the whereabouts of the student.

#### D. SPECIAL PERMISSION

Counselors may grant special permission for the following events:

(1) Students attending college-sponsored events that run past 10 p.m. These events include college plays, and college sports events.

(2) Students desiring to attend outstanding community events NOT under the auspices of the College.

If the event is held on campus, students are expected to return to the residence hall 20 minutes after the close of the performance. If the event is off campus, time is 40 minutes after the close of the event.

#### E. EMERGENCY PERMISSIONS

In an emergency or an unusual happening, the counselor may grant special permissions.

#### F. QUIET HOURS

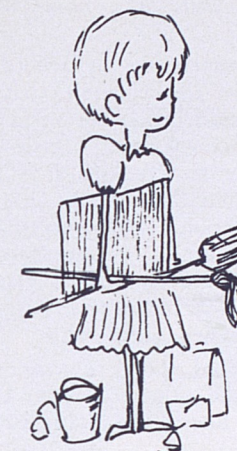
Quiet hours must be maintained with the following exceptions:

11:30 to 1 p.m. Lunch hour  
5 to 7 p.m. Dinner hour

"Reasonable" quiet must prevail at all times. Twenty-four quiet hours are always maintained during examination periods.

#### G. WRC AND AWS REGULATIONS

For failure to cooperate with the residence hall or other AWS regulations, the student may be asked to appear before the Advisory Council of the hall. The Council has the



authority to decide on the restrictions of a student's social privileges.

#### H. MEN CALLERS

Men callers are not permitted to visit in women's residence halls until after the lunch hour. Men, however, may come into the lobby to call for a girl after 8 a.m. Monday through Saturday. Sundays, men may visit in the lounge after 8:30 a.m.

#### I. SOCIAL CONDUCT

Tech women do not wear bluejeans, toreador pants, or bermuda shorts in the residence hall lounge, Tech Union, or Academic Buildings including the Library. The exception to this rule is that casual clothes may be worn to labs with the permission of the instructor.

Casual clothes may be worn in the informal lounges of the halls which have them. Students should dress appropriately in the dining hall. Shorts, bluejeans, brunch coats, bermuda shorts, or houseshoes are not worn. The exception to this rule is Saturday, "casual dress" day, when bermudas, jeans and toreador pants are permitted in the dining halls; and other occasions when specified. Casual dress does not apply at lunch and din-



ner when there is a home football game.

Tech women are in accord with Emily Post in believing that good taste is consideration for others. This includes remembering that even though Tommy Techsan may be the "love of your life," public display of your affection is embarrassing to others. Therefore, obvious display of affection is extremely bad taste and it is not permitted in the lounge, lobby, or entrances to the hall.

You should show your consideration for the other residents by not cutting in line in the dining hall.

#### J. COLLEGE REGULATIONS

(1) The college prohibits the possession or consumption of alcoholic beverages on the campus or in college buildings, and in student residences, both on campus residence halls and off-campus housing. Students are held individually responsible for compliance with this regulation.

(2) Selling, or peddling, or offering for sale is strictly prohibited on the campus and in college buildings without permission from the Comptroller of the College. Permission to sell in the residence halls will be granted only with the approval of the Assistant Dean of Women or Assistant Dean of Men and the Comptroller. Any person selling on Tech campus should be asked to show a written

statement of permission to sell, signed by the Vice President and Comptroller of the College.

### AWS REGULATIONS

#### MEN'S RUSH PARTIES

- (1) Girls may act only as hostesses.
- (2) There is no set number that may attend the party as hostess.
- (3) Only groups recognized as organized and professional may attend for the purpose of entertaining in any way.
- (4) No late permission will be granted for residence hall girls.

#### SERENADES

The fraternity or other organization desiring to serenade should contact the residence hall counselor by 5 p.m. of the Monday night the serenade is planned and report the time within 5 minutes when they will serenade, in order to avoid conflicts with other serenading groups. Serenades shall begin at 10:10 and 10:40 p.m. and they must be over so that girls may be in their respective halls by 11 p.m. Late minutes will be given a girl who returns after 11 p.m.

Lubbock girls may be serenaded at one of the women's halls not already reserved by a hall resident.

Phi Mu Alpha, music fraternity, has special permission to serenade on Tuesday night.



Left to right: Roxanne Townsen, incoming president; Sandra Dowell, house director; Margaret Carter, incoming secretary; Zeda Snodgrass, assistant business manager; and Deana Ward, vice president. Not pictured are Darleen Heitkamp, president; Darlene Lemons, business manager; and Jackie Russell, chaplain.

### Casa Linda

"Always sisters" is the motto of the eighteen girls who live in Casa Linda, Tech's only cooperative residence hall.

Located on the corner of 19th and College, the spacious home has a large living room, dining room, kitchen and laundry with six bedrooms. The basement has been converted into a combination study and storage room.

At Casa Linda schedule of duties is made out each week and by performing all cooking and housekeeping chores, the girls are able to cut living expenses while in college.

Girls who live in Casa Linda are a select group, chosen by the Dean of Women.

Two groups of officers are elected to serve the members of Tech's co-

operative house. The social director, business manager, and assistant manager comprise the administrative division. The social director assigns duties and serves in a general advisory capacity. Since Casa Linda abides by residence hall regulations, she also assumes responsibility for proper adherence to these rules. Casa Linda girls have no house mother, so they govern themselves and are strictly on an honor system.

The business manager and her assistant plan meals and purchase supplies.

Executive officers of Casa Linda are a president, vice president, secretary-treasurer, and historian. They look after the smooth functioning of the organization, with the president serving as AWS representative.



## Doak Hall

You've heard about the old ivy-covered hallowed halls in Eastern colleges. Well, you don't have to go to the East to find one. Doak is the perfect example of old-time collegiate loveliness, placed at the end of a long walk under an alcove of trees.

The most centrally located of all women's halls, Doak is just southeast of the Home Economics building and is in quick walking distance to the Bookstore, Tech Union, Ad building, circle and all buildings beyond. It is connected to the other upperclasswomen's hall, Weeks, and shares a joint cafeteria with Weeks Hall.

One of the first buildings on campus, Doak was originally a women's hall, but housed men during World War II until the fall of 1958. At this

time Doak was redecorated and its facilities were returned to the women.

With rooms for approximately 300 upperclassmen, the hall was named for Mary Doak, first Dean of Women at Texas Tech.

Doak Hall coeds, conscientious studiers all, have their own study hall, which is a transformation of the old cafeteria, and an annual rose scholarship dinner for women with 2.0 grade average.

The spacious second floor lounge is a daily gathering spot for Doak girls and their dates. A television and piano offer welcome diversion in the after-hours, and the lounge is the spot of frequent holiday and birthday parties.

Sounds great, doesn't it. And it is. You'll love Doak Hall just as much as we do. See you soon in the hallowed halls.



Left to right: Diane Winslow, president; Mary Anne Fowler, vice president; and Martie Adams, AWS.



Left to right: Diana Harbert, president; Mary Ellen Cross, vice president; and Myla Henderson, AWS.

## Drane Hall

Always hustling with activity, enthusiasm and spirit, Drane Hall leads the way as Tech's traditional freshman women's residence hall. The 300 residents of Drane find fun and excitement throughout their first year of college life.

Freshmen at Drane begin the year with a succession of mixers with men's halls, all-dorm parties, exchange dinners and friendly get-togethers. An informal lounge is used for watching television and playing bridge while visiting with friends.

One night each week, Drane residents gather in the formal lounge for

a short devotional. This lounge is also the popular spot for holiday and birthday parties.

Come prepared for study hours each week night, for which the Drane cafeteria is available. Drane boasts large participation in intramural activities. Teams in basketball, softball, swimming and others are organized each year.

You will enjoy the Drane spirit, cooperation and friendliness. We will be eagerly waiting for you to join us "where the boys are" and we are glad to welcome you into our group.



## Horn Hall

With all the enthusiasm of a freshmen hall and the maturity of an upperclassmen dorm, we greet you from Horn Hall.

Adjacent to Drane and facing College Avenue, Horn is a big and friendly home for upperclassmen.

Horn has both a formal lounge, for welcoming male visitors and the parents, complete with a television for watching the late-late show, and an informal lounge which is used for study get-together and visits in Bermuda shorts.

There are all-dorm parties on Halloween, Christmas and Easter, exchange dinners with men's halls on Sundays and occasional mixers for mid-week dancing.

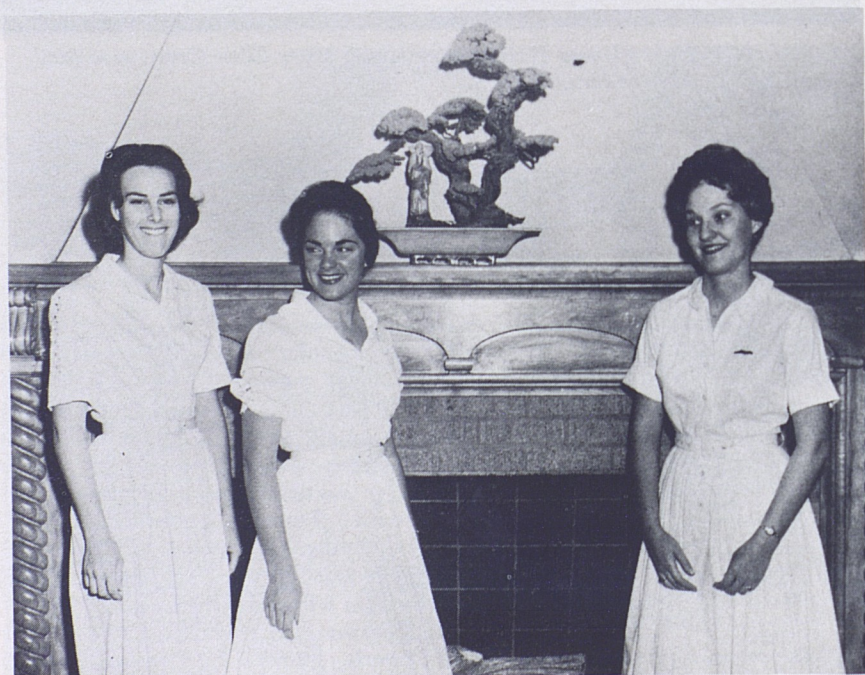
A birthday is never forgotten here either. Each month a special table is

arranged in the dining room for girls with birthdays during that month, and ice cream and cake are served them.

Horn is especially proud of its own newspaper, "The Horn Bugle," which is written and printed by a resident staff monthly. Another "extra" for Horn girls is a set of encyclopedias which spare the Horn coed that long walk to the Library.

Perfect for serenading is the Horn Hall balcony. Members of the sorority being serenaded and spectators watch the pinned couple from the balcony as members of the fraternity sing below.

Glad you're going to hang your hat with us this fall. We'll be looking for you.



Left to right: Nena Eidman, AWS; Marvann Branch, vice president; and Arminta Kemp, president.



Left to right: Carolyn Kelly, AWS; Peggy Berendzen, president; and Linda Hill, vice president.

## Knapp Hall

Welcome to Knapp Hall, the perfect "home away from home" for 350 freshmen women.

A comfortable formal lounge for entertaining guests, a gay play room equipped with TV, coke and candy machines, telephones and a spacious dining hall are just a few of the features of Knapp Hall that create a livable atmosphere.

Knapp is teeming with activity. Besides mixers with the men's halls, serenades by fraternity groups, all-dorm parties, and intramural sports, there are annual events that every Knapp girl looks forward to.

At Christmas Knapp sponsors the "Knapp Doll House" at which time

dolls are collected for the Toys for Tots Campaign. A tea and open house are also on the calendar during the Christmas season.

In the spring, when that blazing West Texas sun climbs high in the sky, Knapp freshmen relax on the green between Knapp and Horn and go home for the summer with a beautiful tan.

These are the planned activities at Knapp but a spontaneous activity is the friendliness and helpfulness of the girls in the hall. You will make life-long friends of many of the girls you live with during your first year at Tech.

We hope to see you in September.



## Weeks Hall

A cheerful smile and a friendly "Hello!" will welcome you to Weeks as it opens its doors for the fifth time this year.

Weeks, Tech's newest women's residence hall, has been designed for beauty as well as livability. The rooms have individual color schemes with matching lavatories and study lamps, built-in closets, chests-of-drawers, and desks. Beds roll away into couches for daytime lounging, perfect for bridge games or visits.

Just off the main lobby is the formal lounge for entertaining friends and parents. An informal lounge, which connects the hall with Doak, is perfect for studying with boy-friends or gathering around the tele-

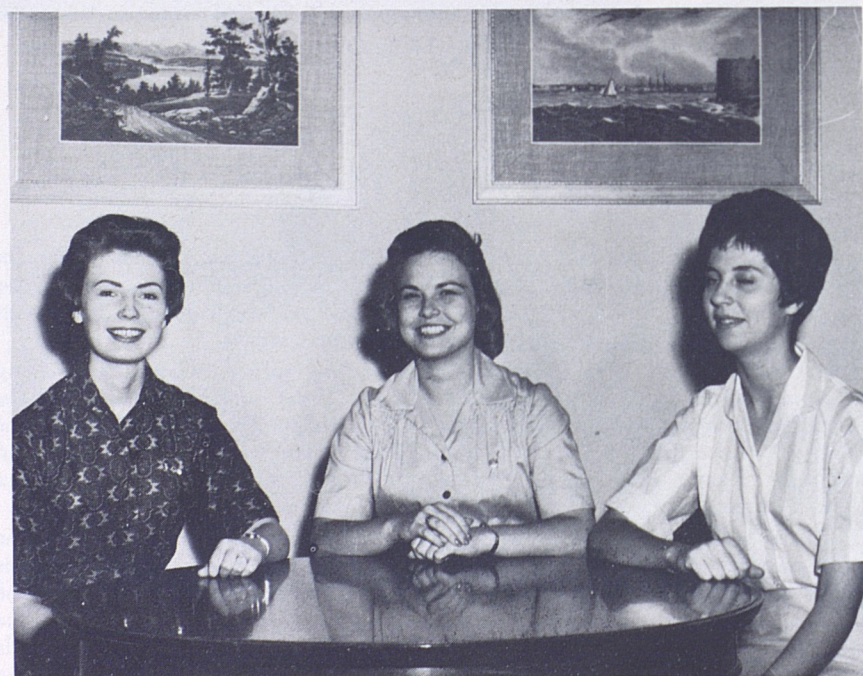
vision set to watch favorite programs.

You'll enjoy the annual all-dorm Christmas and Easter parties, and the many birthday parties, wedding showers and serenades at Weeks.

The girls in Weeks are interested in scholarship, too, and you'll see the scholarship trophy placed prominently in the formal lounge for the second year in a row.

You'll probably want to know how your hall was named. Just in case you're asked, you can say that it was named for Miss Margaret W. Weeks, dean emeritus of the Home Economics School.

We'll be seeing you this fall for another memorable year in Weeks.



Left to right: Nancy Renier, AWS; Judy Martin, president; and Barbara Kullenberg, vice president.



Left to right: Susan O'Brien, AWS; Sonya Shirley, vice president; and Karan Fickertt, president.

## West Hall

Welcome to West! Those of you who will be living in West Hall next year will be in a unique situation. In the past West has been the residence hall for athletes, but this fall it has been converted to a freshman women's hall until a new one can be built.

Since West is new as a hall for women, there are no traditions. Those of you who will be residents next year will help begin them. You will help build the atmosphere of the hall. West can and probably will be the most exciting place to live on the Tech campus with the enthusiasm of three hundred freshmen women.

All the academic buildings are easily accessible from West's central location. Next door is Sneed Hall, a

men's residence hall, and across the street is ivy-covered Doak Hall.

West will maintain the usual freshman practice of quiet study hours each week night from 8:30 to 10 as well as mixers and all-dorm parties. There will be opportunities for everyone to participate in intramural sports and homecoming activities as West Hall residents.

To help with studying, the cafeteria will be available after dinner each night, and there will be a typing room adjacent to the lounge on the second floor.

Next year will be an exciting one in West. We are looking forward to knowing you as we all make a comfortable home in our "new" hall.



## *Women's Residence Council*

Women's Residence Council, (WRC) a committee of AWS, is a coordinating policy-making organization for the women's residence halls. Members of WRC are the vice presidents and AWS representatives from each of the six halls and Casa Linda.

Regular problems dealt with by WRC include scholarship in the halls,

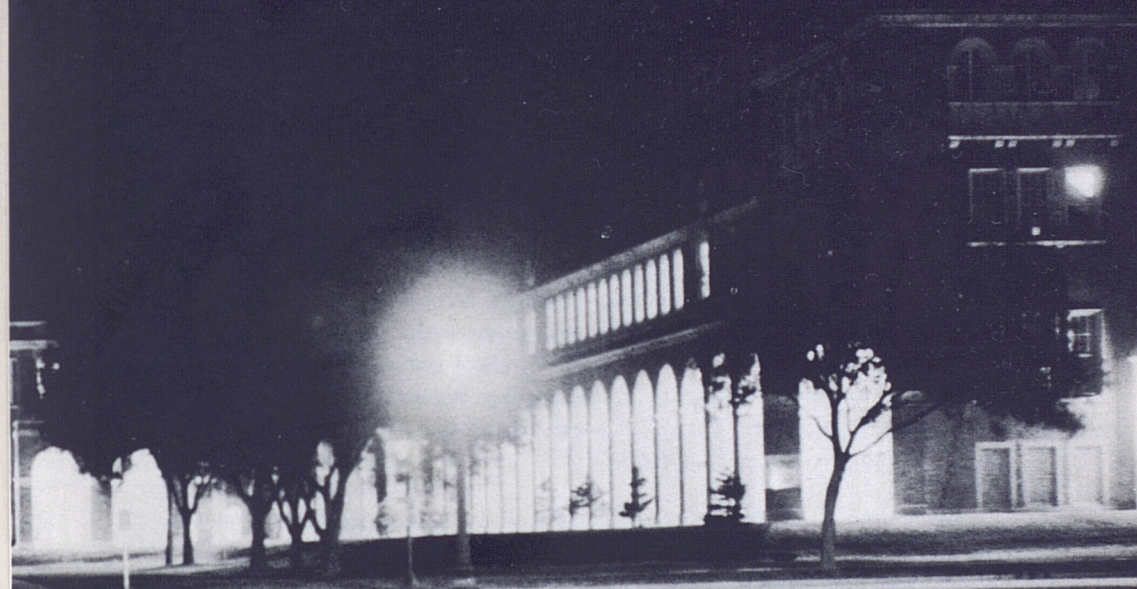
communication to women students through wing meetings, residence hall constitutions, and hall hours and activities.

WRC sponsors an annual workshop in the spring for residence hall officers and a workshop in the fall for legislators.



*Standing: Martie Adams, secretary. Seated, left to right: Mary Fowler, treasurer; Glenda Johnson, president.*

## *Honoraries*





## Special Recognition

It is only natural that some students excel in their studies; and Tech, like most other colleges and universities, wants to recognize them. A number of organizations bearing the name of honoraries serve this purpose. They may be divided into two types. The first is the all-school honorary which is open for membership to all top students in the College regardless of their field. The second type is the more specialized organization which invites only those students excelling in a particular field.

By means of the honorary, excellent students are recognized and membership in any one of them signifies a high achievement to any girl. The organizations within this category on the Tech campus are listed for your study and consideration.



Jan Justice

## Alpha Lambda Delta

Membership in Alpha Lambda Delta, national honorary fraternity for freshmen women, is extended to coeds who have 15 semester hours to their credit. They must also have a 2.5 grade average for the first semester or average a 2.5 during both semesters of their freshman year.

An Alpha Lambda Delta at Tech is a member of the national organization which has grown from one small band of women at the University of Illinois in 1924, to a total membership of nearly 25,000 members with 71 chapters in 1953.

Through her association with the honorary group, the Tech freshman will learn to appreciate and promote intelligent living, a high standard of learning plus encouragement of superior scholastic attainment.

New initiates are honored at a spring banquet given jointly with Phi Eta Sigma, national honorary fraternity for freshmen men.

### OFFICERS

President ..... Jan Justice  
Vice President ..... Betsy Simmons  
Secretary ..... Hazel Hale  
Treasurer ..... Karen Anderson



## Junior Council

A red weskit lettered with a white "J C" indicates a Tech woman who has received the highest honor which can be conferred upon a junior woman.

Junior Council, one of the oldest women's organizations on the campus, chooses for membership each year twenty outstanding women who have excelled in scholarship, leadership and dependability while at Tech. A prerequisite for membership is a 2.0 grade average.

The group undertakes many service projects throughout the year, such as aid in counting and collecting ballots in campus elections, and giving a tea for all women transfer students.

### OFFICERS

President ..... Rowena Williams  
Vice President ..... Reesa Vaughter  
Secretary ..... Susan Ziegler  
Treasurer ..... Arminta Kemp



Rowena Williams



## Mortar Board

A Tech woman, chosen for membership by Mortar Board becomes one of a select group from all fields, who have banded together for the development of a finer type of college women.

The honorary society for senior women, was founded at Tech in 1927 as a local organization under the name of Forum. It became affiliated with Mortar Board nationally in February of 1957.

Founded in 1918, Mortar Board, now has 102 chapters on college and university campuses in the United States.

New members of Mortar Board are selected each spring from undergraduates who will have completed their junior year by the following September. These girls number from five to twenty-five and must meet the standards of scholarship, service and leadership set by the group. They are "tapped" in an April ceremony in which Mortar Board members, dressed in academic caps and gowns, form a chain and go from class to class placing the traditional black collar about the shoulders of chosen members.

### OFFICERS

President ..... Mary Jo McClain  
Vice President ..... Linda Barnhill  
Secretary ..... Gail Pfluger  
Treasurer ..... Nancy Hatton



Mary Jo McClain



Judy Kinney



## Mu Phi Epsilon

Tech women with a "knack" for music as well as for making outstanding grades will most likely find membership in Mu Phi Epsilon both enjoyable and rewarding.

The national professional music sorority for women was founded at the Metropolitan College of Music in Cincinnati, Ohio, on November 13, 1903 and installed at Texas Tech in 1952.

Members of Mu Phi Epsilon must have a 2.0 grade average and possess qualities of musicianship, leadership and friendliness.

Tech's Epsilon Pi chapter supports musical productions and performances of individuals in the glee club, and recitals on and off the campus. An annual scholarship is presented by the group to a talented and deserving member.

The purpose of Mu Phi Epsilon is the furtherment of music through service projects and activities.

### OFFICERS

President ..... Judy Kinney  
Vice President ..... Carla Newsom  
Corr. Secretary ..... Linda Kester  
Rec. Secretary ..... Judy Harper  
Treasurer ..... Clarabelle Biggs



Diana Gibson

## Phi Gamma Nu

Through Phi Gamma Nu, Tech women majoring in business administration further interest in civic and professional enterprise and encourage high scholarship and participation in college activities.

The national and professional sorority for women in business administration, was established on the Tech campus in 1949 as Lambda Chapter.

A pledge of Phi Gamma Nu must be a woman student working toward a degree in business administration, who has a 1.5 grade average. She must also have completed a minimum of six hours in commerce.

Activities sponsored by Lambda chapter include annual selection of a Mr. Executive, from the business faculty on campus. Visits are also made to various business firms in Lubbock and semi-annual banquets in the fall and spring are scheduled by the group.

The senior coed majoring in business administration with the highest scholastic average receives a scholarship key each year.

### OFFICERS

President ..... Diana Gibson  
Vice President ..... Mary Francy  
Secretary ..... Mary Cole  
Treasurer ..... Ann Baxter

## Phi Upsilon Omicron

Members of Phi Upsilon Omicron are chosen from women majoring in home economics, who have completed the second semester of their sophomore year and have an over-all grade average of 1.8 or better.

The honorary fraternity bases selection on character, scholarship, leadership and campus activities, as well as interest in home economics.

The activities of the organization give meaning to the stated purposes of strengthening the bonds of friendship, promoting the moral and intellectual development of its members and advancing and promoting home economics.

Each year the group contributes to the Phi Upsilon Omicron scholarship, and supports local welfare and alumni projects. Two teas are given annually, one for freshmen in home economics and a Founder's Day Tea.

### OFFICERS

President ..... Carolyn Murphy  
Vice President ..... Beth Gillham  
Secretaries ..... Judy Cowger,  
Harriett Lee  
Treasurer ..... Carolyn Vines



Carolyn Murphy





Marjie Baird



## Tau Beta Sigma

Bandwomen at Tech have a group all their own. Tau Beta Sigma, national honorary fraternity was founded at Tech in 1939.

It is the only group on this campus to have had its national beginnings right here, and plans to set up a shrine dedicated to its foundation, in the near future.

The group was founded on the same principles as Kappa Kappa Psi, national fraternity for bandmen. To become a member of Tau Beta Sigma the coed must be a member of the Texas Tech band and have a 1.0 grade average from the semester previous to her initiation.

Although Tau Beta Sigma was founded at Tech, Alpha Chapter is located in Stillwater Oklahoma, because the national headquarters of the fraternity is at Oklahoma State University.

A charter was granted to Tau Beta Sigma on March 26, 1949. On May 4 of the same year Beta Chapter was installed on the Tech campus with 35 charter members.

### OFFICERS

President ..... Marjie Baird  
Vice President ..... Margaret Henry  
Secretary ..... Margo Hardin  
Treasurer ..... Rozanne Cannon

## Theta Sigma Phi

In April of 1909 a small group of women interested in journalism banded together at the University of Washington to further their common interest and set a standard for women in journalism.

They founded Theta Sigma Phi.

Today, Alpha Upsilon Chapter, on the Tech campus functions actively in service and entertainment projects for the campus. Fall projects include Tech's Most Handsome Man contest which is climaxed by Club Scarlet, a mock night club at which the contest winner is presented.

Theta Sigma Phi also assists the Journalism Department in hostessing a departmental coffee for ex-students at Homecoming.

In the spring, members sponsor the Best-Dressed Coed Contest, aid AWS in editing of Tech Tips, and commemorate the founding date with an April Matrix Table Banquet. An outstanding woman journalist is brought to Lubbock as speaker for the occasion.

Toreador awards are made each spring.

### OFFICERS

President ..... Freda McVay  
Vice President ..... Dot Bowles  
Secretary ..... Kay Hunter  
Treasurer ..... Jeannie Bookout  
Historian ..... Alayne Kornblueh



Freda McVay

# Sororities





## A Look At Panhellenic

### PANHELLENIC COUNCIL

#### OFFICERS

|                        |                       |
|------------------------|-----------------------|
| Linda Ryno .....       | President             |
| Kay Edwards .....      | Vice President        |
| Linda Hancock .....    | Secretary             |
| Vina Mayfield .....    | Treasurer             |
| Marilyn Galloway ..... |                       |
| .....                  | A.W.S. Representative |
| Shelley White .....    | Rush Chairman         |
| Beverly Brown .....    |                       |
| .....                  | Activities Chairman   |

#### MEMBERS

|                       |                   |
|-----------------------|-------------------|
| Mary Alice Hill       |                   |
| Shelley White .....   | Alpha Chi Omega   |
| Annette Inmon         |                   |
| Judy McKinnon .....   | Alpha Phi         |
| Beverly Brown         |                   |
| Myla Henderson .....  | Delta Delta Delta |
| Marilyn Galloway      |                   |
| Judy McKenzie .....   | Delta Gamma       |
| Linda Hancock         |                   |
| Nancy Jones .....     | Gamma Phi Beta    |
| Mary Kay Pearce       |                   |
| Betsy Williams .....  | Kappa Alpha Theta |
| Kay Edwards           |                   |
| Cecille Roach .....   | Kappa Kappa Gamma |
| Vina Mayfield         |                   |
| Mary Hamner .....     | Phi Mu            |
| Ann Dennison          |                   |
| Barbara Sudduth ..... | Pi Beta Phi       |
| Kay Lane              |                   |
| Judy Price .....      | Sigma Kappa       |
| Beverly Boase         |                   |
| Betty McFarren .....  | Zeta Tau Alpha    |

### PRESIDENT'S LETTER

Dear Rushee:

Panhellenic is happy to extend to you a warm welcome to Texas Tech and to your new college life. Your college experience will be filled with many varying activities in the different organizations here at Tech. The Panhellenic Council is concerned with one phase of these activities, that of coordinating the eleven Greek letter

sororities represented on this campus. As members of Panhellenic, we want to do everything we can to help make you happy as a member of a Greek group.

This section of *Tech Tips* has been written especially for the entering freshman and others who may be interested in sororities. By reading this section on sororities carefully, you will learn something of the history and the activities of each group. These pages also contain many hints which will be helpful to you in your preparation for Rush Week. If you still have questions after reading the following pages, please feel free to contact the Office of the Dean of Women.

Rush Week can be a very exciting and fun-filled week for each of you. Be natural and relaxed and enjoy the wonderful opportunity of meeting many of your new friends and classmates. Panhellenic is looking forward to meeting you and being among the first new friends of your college career. We hope you have a wonderful summer, and we are looking forward to seeing you on September 2.

Sincerely yours,

Linda Ryno, President  
Panhellenic Council

### WHAT IS PANHELLENIC?

One of the most important names in the Greek world is Panhellenic. The word is derived from the Greek roots — "Pan" meaning all, and "hellenic" meaning Greek. Thus, Panhellenic is an organization in which all national Greek letter social sororities are represented.

To promote inter-sorority cooperation, the eleven sororities at Texas Tech are members of a group known

as Panhellenic Association. The governing body of the organization is the Panhellenic Council which is made up of two delegates from each sorority.

The delegates meet regularly to discuss common problems concerning sorority standards, scholarship, campus activities, and inter-sorority functions. Before action is taken, the delegates have time to present questions to their own chapter so that all sorority members have a part in final Panhellenic decisions.

### WHAT IS RUSH WEEK?

Rush week is a period during which women's social groups entertain potential sorority women, or "rushees," prior to pledging new members.

It is the desire of Panhellenic, and of each individual member of sororities that each girl who is interested in belonging to a sorority shall find the group that fits her personal needs.

Friends and relatives are not going to be with you, so remember it should be your choice, not someone's else. Many parties are held during rush week in the hope that the sorority members will come to know many rushees personally, and that the rushees will become acquainted with them. When prospective members, as guests, go through rushing, they see the gay side of sorority life, but it must be remembered that there is much seriousness and responsibility involved in being a good sorority pledge or member.

### WHAT ARE SORORITIES?

#### ACTIVE CHAPTERS

There are eleven sororities on the campus of Texas Technological College. Each sorority has the same purpose — to teach its members leadership through group experience and how to work and play with others under all circumstances. A sorority

is an organization whose members have elected to establish a close affiliation with one another as college students. They are organized for mutual interest in education and college activities. Sororities promote lifetime friendships that are renewed constantly in alumnae groups and chapters. The national aspect of the organization gives members a broader concept of the work of human affairs. They encourage participation in varied activities which offer unlimited and valuable experience. Every sorority encourages and demands good scholarship. Your high school record is carefully weighed by a sorority in considering you for membership.

#### ALUMNAE GROUPS

Upon leaving college, sorority women become alumnae and automatically become eligible for membership in alumnae organizations. Each of these groups participates in far-reaching philanthropic and educational projects of its national organization as well as supporting local altruistic programs.

### HOW DO SORORITIES CHOOSE THEIR MEMBERS?

Before a sorority asks you to pledge, the members want to be sure that you will be happy in their group and that they, in turn, will enjoy working with you. It is important for sorority members to meet you and to see you as you really are. Formal rushing has been planned with this idea in mind. At the parties sorority members will decide whether they think you will be a congenial member of their group. Some of the things of concern are the activities in which you participated in high school, and the scholarship you attained there. After all, these are indications of your future achievement.



## HOW DO YOU CHOOSE A SORORITY?

You should choose a sorority in exactly the same way that you choose any group of friends. During rush week, you will have many chances to see and talk with sorority women. Naturally, you want to make a "good impression" and you will dress carefully, as will the girls whom you are going to meet. But do not think your appearance is all that counts. Those girls will be looking at you as a potential friend, so you should act as though you were with your friends, and you should talk about things which really interest you.

Do not be influenced by the opinion of your associates and relatives, for the decision as to which group is best for you is based on personal conviction and mutual interest. Every group is worthwhile and has much to offer you.

Remember to look for the heart of the sorority — its members. The girls you choose as sorority sisters will be your very close friends for four years of college and years afterward. When the time comes to make your choice, make it a wise one. Just keep your eyes open and think for yourself.

When you go through rushing, do not set your heart on one group alone. It is best to know several groups. Remember, check your pocketbook and consider carefully the expense of pledging and initiation before joining a group. If you are able, the extra expense is paid back a thousand-fold in companionship and sisterhood.

One of your first considerations in deciding to pledge a sorority should be whether or not you are able to meet your financial responsibilities. All the sororities at Texas Tech have very similar requirements for members and pledges. If you decide you can afford to pledge a sorority then disregard finance and

base your choice of group upon friendship and interest, but be sure you want to assume this obligation.

## RANGE OF SORORITY EXPENSES — 1961-1962

|                                     |   |
|-------------------------------------|---|
| Pledge Fee .....                    | \$12.50-\$24.00                                   |
| Initiation Fee .....                | \$40.00-\$75.00                                   |
| Badge .....                         | Some in cost of initiation, others \$25.00 and up |
| Monthly Pledge Dues                 | \$12.50-21.00                                     |
| Monthly Active Dues                 | \$12.50-15.00                                     |
| Average                             |   |
| Pledges' Financial Obligation ..... | \$238.00  |
| Actives' Financial Obligation ..... | \$ 97.00  |

In addition to the above standard fees, some groups charge a building fund in preparation for the day when the groups may wish to build lodges. Those who charge this fee usually charge \$50.00 to \$100.00. Other extra items may include favors for dinner dances and retreats, although some include these items in their dues. Extra costs which would not be included in dues might include sweat-shirts, personal jewelry and composite pictures.

All sororities receive financial supervision from experienced alumnae and employed accountants. The financial advisors of the chapter welcome consultation with the parents at any time.

## FORMAL RUSH

### LIVING ACCOMMODATIONS FOR RUSH WEEK

Rushes will be housed in Drane, Knapp, and West Halls.

Insofar as possible you will be assigned to your regular room that you have reserved for the fall semester. If you are not assigned to your regular room, the room assignment during

rush is temporary and in no way affects your regular room assignment for the college year.

The Tech Union will open at 1 p.m., Saturday, September 2, for registration. You are to go first to the Union to register and get your residence hall assignment. Although you have your permanent room assignment, you must go to the Union in order to get a room assignment for rush and check in with Panhellenic. After you have registered at the Union, you may move into the residence hall to which you are assigned. You should arrange to register and move into the hall between the hours of 1 and 6 p.m.

When you move into the residence hall, a key deposit of \$1 will be collected, refundable when the room is vacated at the close of rush week. Rushes *must* be checked out of their rooms by 12 Noon, Saturday, September 9, if not in regular rooms, in order that the permanently assigned students may move in.

The dining rooms in the halls will not be open during rush week; however, the Tech Union will serve meals to rushes at a nominal charge. When you go to the Union to register, you will be given a schedule of hours when meals are served and *are required* to purchase a meal ticket for the week. The first meal will be Sunday morning breakfast and the last meal will be the following Friday night.

Panhellenic expects all rushes to be neat, orderly, and quiet in their rooms, and to be courteous and cooperative with those in charge of the residence halls.

The halls will close at 10:30 Saturday through Friday; and the last Saturday at 12 midnight. Each rush is responsible for signing in and out of the hall.

## IMPORTANT TIPS FOR RUSHEES

1. The Panhellenic Office is permanently located in the Dean of Women's Office; however, rushes will receive their invitations to parties in Drane, Knapp, and West Halls.
2. The Tech Union will be open for Panhellenic registration and assignment to halls from 1 p.m. to 6 p.m., Saturday, September 2, 1961. The residence halls will also be open from 1 p.m. to 6 p.m. for occupancy after checking in at the Union.
3. At registration on September 2, each rush will be assigned a group with whom she will attend the Open Houses.
4. Rush registration must be completed by August 15.
5. Fill out all 12 registration blanks and return them to the Office of the Dean of Women by August 15. Absolutely no registrations will be accepted after this date.
6. Attach one photograph of yourself to each of 11 of these 12 registration blanks.
7. Pay rushing registration fee of \$1.50, made payable to Texas Tech Panhellenic.
8. Pay room fee for \$11.20, made payable to Texas Technological College.
9. If you find it impossible to attend rush, notify the Office of the Dean of Women by August 15 and your room fee of \$11.20 will be refunded.

You may send a check or money order, but please do not send cash through the mail.

It is recommended that registration be completed earlier than August 15,



if at all possible. You may register by mail or in person. Your registration for rushing and/or housing will not be complete until all fees are paid, and registration blanks and pictures are received.

## RUSH ADVISORS

Each of the sororities at Texas Tech has counselors who are living in your hall during rush week. These young women have been chosen because of their sorority experience and because they can submerge their interests to yours and to those of Panhellenic. The rush advisor is very familiar with rushing procedures and with residence halls do's and don'ts.

The rushing advisor is living in the hall in order to make Rush Week smoother for you. At your first hall meeting you will meet these girls and will be assigned to particular advisors. This does not mean you may not consult with other people in the hall. All of them are there to answer your questions and to help you in any way possible. These girls will not be wearing their pins, will not be participating in rush with their own sororities, and will have no contact with members of their sororities at any time during rush week.

## RUSH WEEK SCHEDULE

Parties for Period I are held in various locations on the campus; each group is assigned to a place drawn by lot. Parties for Periods II, III, IV will be held in private homes in Lubbock or in sorority lodges. The locations will be posted on the Knapp, Drane, and West Bulletin Boards.

Saturday, September 2, 1961

7:30 p.m. — Convocation and movie, Tech Union Ballroom. Silence begins at this time, and you may not plan to be with your parents after

this time. You may not be with them on Sunday morning.

10:30 p.m. — Wing meetings in the residence halls.

Schedule of Period I:

Sunday, September 3. You *may* attend church. You must attend each Period I Party.

1 to 1:40 p.m.  
2 to 2:40 p.m.  
3 to 3:40 p.m.  
4 to 4:40 p.m.  
5 to 5:40 p.m.

Monday, September 4

Schedule of Period I (continued)

9 to 9:40 a.m.  
10 to 10:40 a.m.  
11 to 11:40 a.m.  
1 to 1:40 p.m.  
2 to 2:40 p.m.  
3 to 3:40 p.m.  
4 to 4:40 p.m.

Tuesday, September 5

Period II Parties:

7:00 a.m.—Rushees pick up invitations to Period II parties. Rushees are to remain in their rooms until notified to go to lounge. Sign acceptances immediately in lounge of residence hall. Rushee must accept all invitations received, to a maximum of eight.

Schedule of Period II Parties:

9 to 10:30 a.m.  
11 to 12:30 p.m.  
2:30 to 4 p.m.  
4:30 to 6 p.m.

Wednesday, September 6

Schedule of Period II Parties (continued)

9 to 10:30 a.m.  
11 to 12:30 p.m.  
2:30 to 4 p.m.  
4:30 to 6 p.m.

10:30 p.m. — Wing meetings in residence halls for rushees.

Thursday, September 7

Period III Parties:

7 a.m. — Pick up invitations to

Period III Parties. Rushees are to remain in rooms until notified to go to lounge. Sign acceptance immediately in residence hall lounge. Rushee must accept all invitations received, to a maximum of five.

Schedule of Period III Parties:

9 to 10 a.m.  
10:30 to 11:30 a.m.  
1:30 to 2:30 p.m.  
3 to 4 p.m.  
4:30 to 5:30 p.m.

Friday, September 8

Period IV Parties:

2 p.m.—Invitations to Period IV Parties will be delivered to lounges of residence halls. Rushees are to remain in rooms until notified to go to lounge. Invitations must be accepted immediately. Rushee must accept all invitations, to a maximum of two. The time for which you are invited is no indication of preference by the sorority at this or any other period, nor does your acceptance for a particular time indicate preference on your part.

Schedule of Period IV Parties:

6:30 to 8 p.m.  
8:30 to 10 p.m.  
10:30 p.m. — Sign preference cards in residence hall lounges.

Signing of this preference card is binding to the effect that if not pledged to a sorority of your first choice, then you are willing to be pledged to your second choice, and likewise to the third choice. You should not list on your preferential card the name of a sorority you would be unwilling to join, since *signing the preference card shall be binding for one calendar year if that sorority bids you.*

Saturday, September 9

2-5 p.m. — All rushees are to be available in their rush week rooms for consultation regarding questions on

their preferences. Although you will have moved your things to your permanent rooms, you will be expected to be in your rush week room during this time.

5 p.m. — Bids will be delivered to the residence hall lounges.

## PREFERENTIAL BIDDING

Friday, September 8 at 10:30 p.m., all rushees are to assemble in the lounge of their hall and fill out a preferential card. On this card the rushee lists in order of her preference any three sororities that she would be willing to pledge.

According to National Panhellenic, "when a girl receives a bid under the preferential system, the signing of the preference card shall be binding to the extent that she shall be considered ineligible for one calendar year for a bid from any fraternity other than the one from which she received a bid, whether it be Texas Technological College, or elsewhere, in accordance with the correct functioning of the preferential system."

**THEREFORE A GIRL MUST BE WILLING TO PLEDGE ANY OF THE THREE SORORITIES SHE LISTS.**

Saturday morning, the Dean of Women's staff will match the preferential lists of girls each sorority wishes to pledge and rushees' preferential cards which list the three sororities each rushee wishes to pledge. You will be a pledge of the sorority of your first choice if your name is within the quota on the sorority's preferential list. If not, you will be a pledge of your second choice, provided your name is within the quota on that sorority's list, and in the same way, you may become a pledge of your third choice. Only the staff members of the Dean of Women will know whether the sorority you pledge



is your first, second, or third preference and the information will be divulged to no one. You will undoubtedly be happy in any one of the three you list, since so many fine groups exist on the campus. It is therefore, urged that you take full advantage of your opportunity to list three sorority choices, since under the preferential system you cannot receive an invitation to membership from a sorority which you have not indicated on your preferential card, even though your name may be on the sorority's preferential list.

Each sorority is limited in its total membership and its total number of pledges each year. The number of pledges allowed each chapter is determined each year by the number of girls interested in sorority membership. Each sorority will be able to pledge a minimum of thirty girls during this formal rush period.

## WHAT TO WEAR — WHEN

One of the most important things to remember when planning what you will wear to rush is the climate in Lubbock. You should be prepared for just anything. Simplicity and practicality are the keynotes in campus and rushing clothes.

Good grooming is the most important thing about appearance, not expensiveness of your clothes. Texas Tech coeds do not wear shorts or long pants in the Union or academic buildings.

Period I — Wear fall cottons, flats and hose.

Period II — Wear fall cottons, socks and loafers or flats.

Period III — Wear fall cottons, hose and heels (no hats).

Period IV — Wear a dressy dress, hose and heels (no hats).

## OPEN OR INFORMAL RUSH

Open rush for fall begins September 18 and continues through January 6. The dates for open rush in the spring are February 26 through May 8. A girl does not sign to participate in open rush. Any girl who shows an interest may be considered a potential rushee and may be pledged any time during this period. Ribbon pledging will take place in the Dean of Women's Office. Eligibility to participate is governed by the same eligibility rules that pertain to formal rush (1.0 or C grade average for the previous semester as well as an overall 1.0 grade average.) Those sororities eligible to participate will be those which have not filled quotas and/or have not reached the chapter limitation established by Panhellenic.

## SUMMER RUSH

The Panhellenic Council of Texas Technological College has adopted the policy of NOT participating in any form of pre-college rush. This prohibits a sorority member at Tech from participating in a rush party of her sorority.

All prospective rushees are reminded that they are NOT to participate in or attend any function given by one fraternity in the form of an organized party.

## RULES GOVERNING FORMAL RUSH WEEK

### I. Eligibility of Rushees

Rushees must be regularly enrolled or in the process of enrolling in Texas Technological College for 12 or more hours in order to be eligible to participate in any rushing procedure. Any girl previously enrolled in any college, including summer school must have

a "C" overall average to be eligible; she must also have a "C" average for the preceding long term in which she was enrolled in college.

### II. Rushing Rules

1. Rush Week is defined as beginning at 1 p.m. Saturday, September 2 and ending with receiving bids at 5 p.m. Saturday, September 9. Silence begins at 7:30 p.m. when Convocation is held. You may not be with your parents after that time.

2. The residence halls will close at 10:30 p.m. on Saturday through Friday nights, and at 12 midnight on the Saturday rush ends. Each rushee is responsible for signing in and out of the hall. Lights are to be turned out at midnight with the exception of the Saturday rush ends.

3. Upon arrival in Lubbock, a rushee is not to go to the home of sorority members, or be with anyone connected with a sorority with the exception of her immediate family.

4. Rushees shall not grant interviews to the press or pose for photographers during rush week unless arrangements have been made with the Panhellenic Council and the Office of the Dean of Women.

5. Emergency telephone calls will be taken care of through the Drane, Knapp and West Hall Offices. Telephone calls may not be taken by rushees unless the emergency is explained to her residence hall counselor.

6. Rushees must furnish their own transportation to and from the parties.

7. A rushee must arrive at and leave all rush parties at the hour specified in the invitation.

8. A rushee must attend all parties which she has accepted. Broken dates are not permitted. In case of

illness, accident, or withdrawal from rush, she should notify the Panhellenic Office or her residence hall counselor immediately in order to avoid ineligibility.

9. There is to be no smoking at any of the rush parties.

10. Rushees are subject to the penalty of deferred pledging for one semester for violation of rushing rules.

### III. Silence During Formal Rushing

Silence is a time when all rushees are asked not to converse with people other than the rushees and hall counselors, except at the parties. The reason for this is that Panhellenic does not want any of the rushees to choose a sorority as a result of outside influence. Panhellenic has found that girls are much happier in a sorority which they themselves have chosen and not the group which parents, boys, and other friends encourage them to join.

1. There shall be no contact or conversation between a rushee and sorority member, pledge, or alumna except at the specified rush parties. (You may say hello!)

2. There is to be no contact with men during rush week.

3. The period of silence begins with convocation on Saturday, September 2, at 7:30 p.m. and ends at 8 a.m. Saturday, September 9. Although rushees are off silence Saturday a.m., they may not receive guests in the hall. Silence ends for sorority members at 5 p.m. Saturday, September 9.

4. Sororities are bound by silence and may not deliver letters, telephone calls or telegrams to rushees at any time.

### IV. Illegal Rushing

1. Oral invitations to parties or to join a sorority are absolutely forbidden during formal rushing.

2. By mutual agreement there shall be no "spiking" at any time.



Spiking is defined as persistent persuasion on the part of a sorority to secure from a rushee some commitment of preference for its group.

3. Sorority members shall make no statement to rushees or others giving their idea of sorority ratings, for there is no such thing.

4. No gifts, flowers, or favors can be given rushees with the exception of Period III parties. Name

tags are to be distributed by Panhellenic during registration, and are to be worn all week with the exception of Period III parties.

#### V. Penalties for Violations of Rush Rules by Sororities

It is your responsibility to report infractions of any rushing rule to the Dean of Women's office within 48 hours of the occurrence. All penalties for violations of rushing rules will be decided by the Judiciary Committee of Panhellenic.

### *Rush Registration Instruction*

Have you followed these steps in preparing to send your registration blanks?

1. 1 check for \$11.20 payable to Texas Technological College for your room.
2. 1 check for \$1.50 payable to Texas Tech Panhellenic for your registration. DO NOT SEND A SINGLE CHECK COMBINING THE TWO AMOUNTS.
3. 12 registration blanks legibly filled in.
4. 11 pictures of yourself.
5. Place checks, registration blanks and pictures in one envelope and mail to Office of the Dean of Women.
6. Do you know your eligibility? If you have attended college any place under any condition, this affects your rushing eligibility. You must have a C average for any previous college work. You must also have a C average for the preceding long session of college if you were enrolled during a regular academic year.

### *The National Panhellenic Creed*

We, the Fraternity Undergraduate Members, stand for good scholarship, for guarding good health, for wholehearted cooperation with our college's ideals for student life, for the maintenance of fine social standards, and for the serving, to the best for our ability, of our college community. Good college citizenship as a preparation for good citizenship in the larger world of alumnae days is the ideal that shall guide our chapter activities.

We, the Fraternity Alumnae Members, stand for active, sympathetic interest in the life of our undergraduate sisters, for loyal support of the ideals of our Alma Mater, for the encouragement of high scholarship, for the maintenance of healthful physical conditions in chapter house and dormitory, and for using our influence to further the best standards for the education of young women of America. Loyal service to chapter, college, and community is the ideal that shall guide our fraternity activities.

We, the Fraternity Officers, stand for loyal and earnest work, for the realization of these fraternity standards. Cooperation for maintenance of fraternity life in harmony with its best possibilities is the ideal that shall guide our fraternity activities.

We, the Fraternity Women of America, stand for preparation for service through the character building inspired in the close contact and deep friendship of fraternity life. To us, fraternity life is not the enjoyment of special privileges but an opportunity to prepare for wide and wise human service.





*Left to right: Glenna Adams, rush chairman; Susan Craig, president; Jane Sargent, vice president; Barbara McMurrey, pledge trainer.*

## Alpha Chi Omega

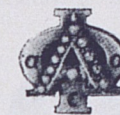
GAMMA RHO



Founded at De Pauw University, October 15, 1885  
 Number of collegiate chapters — 94  
 Colors — Scarlet and olive green  
 Insignia — Lyre with black enamel cross across strings bearing Greek letters  
 Flower — Scarlet carnation with smilax  
 Publication — "The Lyre"  
 Philanthropy — Aid to cerebral palsy patients  
 Nickname — Alpha Chi  
 Outstanding events — Candy Stripe Dinner Dance, Formal Spring Presentation, Founder's Day Banquet, Spring Retreat and Workshop, Senior Banquet, and Paddle Party  
 President — Susan Craig  
 Rush Chairman — Glenna Adams

## Alpha Phi

GAMMA IOTA



Founded at Syracuse University, October 10, 1872  
 Number of collegiate chapters — 74  
 Colors — Silver gray and bordeaux  
 Insignia — Plain gold monogram of the two Greek letters with the letters "AEO" in black  
 Flowers — Lily-of-the-valley and forget-me-nots  
 Publication — "The Alpha Phi Quarterly"  
 Philanthropy — Cardiac Aid Foundation  
 Nickname — Alpha Phi  
 Outstanding Events — Fall and Spring Retreat, Presentation Dance, Work with Cardiac Aid during Heart Week, annual Easter Egg Hunt for orphanage, Founder's Day Party, Starlite Formal  
 President — Ouida Daugherty  
 Rush Chairman — Janis Newsom



*Left to right: Janis Newsom, rush chairman; Nancie Morgan, first vice president and pledge trainer; Ouida Daugherty, president; Marilyn Warner, second vice president.*





*Left to right: Linda Wetzel, vice president and pledge trainer; Suzann Davis, president; Lynda Elmore, rush chairman.*

## Delta Delta Delta

PHI ETA



Founded Thanksgiving Eve, 1888, at Boston University  
 Number of collegiate chapters — 105  
 Colors — Silver, gold, and blue  
 Insignia — Three jeweled stars with a crescent of gold bearing three deltas  
 Flower — Pansy  
 Publication — "The Trident"  
 Philanthropy — Awards scholarships to American and Canadian women students  
 Nickname — Tri Delt  
 Outstanding Events — Founders' Day Dinner, Pine Prance, Pine Pilgrimage, Delta Week in honor of new initiates, Annual Presentation Dance, Pansy Breakfast  
 President — Suzann Davis  
 Rush Chairman — Lynda Elmore

## Delta Gamma

GAMMA XI



Founded at Lewis School, Oxford, Mississippi, December, 1873  
 Number of collegiate chapters — 88  
 Colors — Bronze, pink, and blue  
 Insignia — Anchor with white shield bearing Greek letters  
 Flower — Cream rose  
 Publication — "The Anchora"  
 Philanthropy — Sight conservation and aid to the blind  
 Nickname — DG  
 Outstanding Events — Spring Dinner Dance, Fall Presentation, Pinafore Party, Fall Retreat  
 President — Anne Lipscomb  
 Rush Chairman — Kay Munsell



*Left to right: Shannon O'Keefe, first vice president and pledge trainer; Kaye Munsell, rush chairman; Nancy Hatton, second vice president and standards board chairman; Anne Lipscomb, president.*





Front row, left to right: La Rue Elliott, president; Claudia Austin, rush chairman. Back row, left to right: Kay Porter, pledge trainer; Linda Hancock, Panhellenic Representative.

## Gamma Phi Beta

BETA TAU



Founded at Syracuse University, New York, November 11, 1874  
 Number of collegiate chapters — 68  
 Colors — Mode and brown  
 Insignia — The Greek letters enclosed in a black enameled crescent bearing a Hebrew numeral  
 Flower — Pink carnation  
 Publication — "The Crescent"  
 Philanthropy — Own and operate two summer camps for under-privileged girls at Vancouver, B.C. and Indian Hills, Colorado  
 Nickname — Gamma Phi  
 Outstanding Events — Homecoming Coffee, Founders' Day, Fall Presentation, Spring Dinner Dance, Romeo Dance, Retreat, Senior Breakfast  
 President — La Rue Elliott  
 Rush Chairman — Claudia Austin

## Kappa Alpha Theta

GAMMA PHI



Founded at DePauw University, January 27, 1870  
 Number of collegiate chapters — 87  
 Colors — Black and gold  
 Insignia — Kite-shaped, gold border, black enamel shield and a white chevron on which are inscribed the Greek letters  
 Flower — Black and gold pansy  
 Publication — "Kappa Alpha Theta"  
 Philanthropy — Supports Institute of Logopedics, the Dr. Matilda Brooks research laboratory, aid to the blind  
 Nickname — Theta  
 Outstanding Events — Presentation Dance, Retreat, Dinner Dance, Kite Flying, Founders' Day Banquet, Pledge Retreat  
 President — Judy Rutledge  
 Rush Chairman — Judy Morton



Standing, left to right: Linda Pratt, vice president and pledge trainer; Judy Morton, rush chairman. Seated, left to right: Suzanne Alderson, social chairman; Judy Rutledge, president.





*Left to right: Phyllis Reed, vice president and rush chairman; Lucy Fox, president; Kay Edwards, pledge trainer.*

## Kappa Kappa Gamma

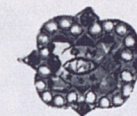
DELTA PSI



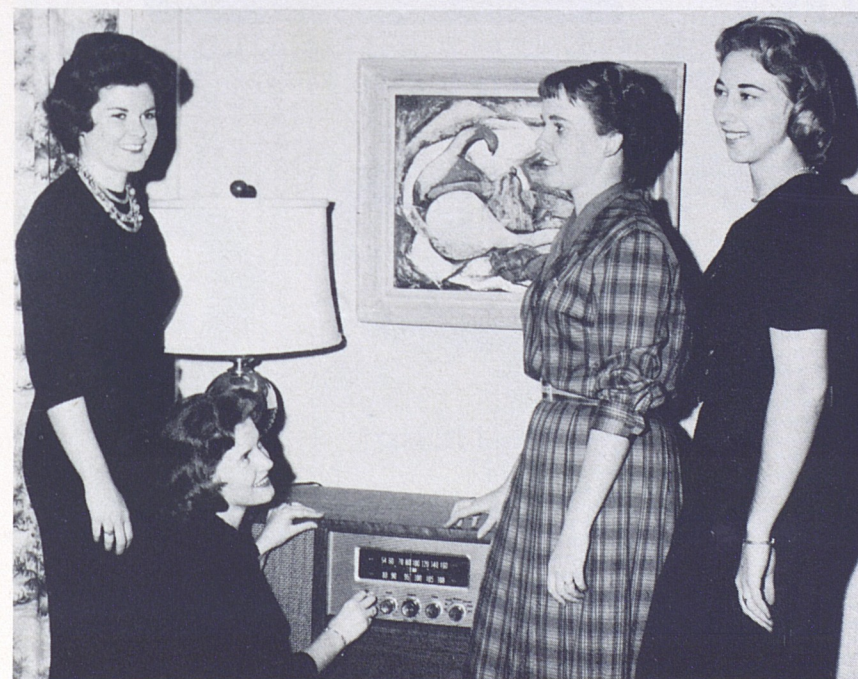
Founded at Monmouth College, October 13, 1870  
 Number of collegiate chapters — 87  
 Colors — Dark and light blue  
 Insignia — Golden key  
 Flower — Fleur-de-lis  
 Publication — "The Key"  
 Philanthropy — Rehabilitation services for crippled children and adults, also, support of a foster child in Belgium  
 Nickname — Kappa  
 Outstanding Events — Fall Dinner Dance, Valentine Presentation, Pledge Peppermint Party, Big-Little Sister Paddle Party, Pledge-Active Picnic, Senior Farewell Party  
 President — Lucy Fox  
 Rush Chairman — Phyllis Reed

## Phi Mu

ALPHA CHI



Founded at Wesleyan College, Macon, Georgia, March 4, 1852  
 Number of collegiate chapters — 85  
 Colors — Rose and white  
 Insignia — Shield of black enamel superimposed on a shield of gold; black shield bears Greek letters and three stars  
 Flower — Enchantress carnation  
 Publication — "The Aglaia"  
 Philanthropy — Toy carts in children's hospitals, study grant to a foreign woman to study in an American University, Crippled Children's Convalescent Ward of the Eastern Navajo Hospital  
 Nickname — Phi Mu  
 Outstanding Events — Presentation, Dinner Dance, Kidnap Breakfast, Founders' Day Banquet, Heart in Hand Week  
 President — Donna St. Clair  
 Rush Chairmen — Ruth Latch, Bobbye Richards



*Left to right: Donna St. Clair, president; Bobbye Richards, rush chairman; Jan Hemphill, vice president; Linda Howard, pledge trainer.*





*Left to right: Linda Barnhill, president; Maggie Snider, vice president; Kakie Shaugness, pledge trainer; Betty Russell, rush chairman.*

## Pi Beta Phi

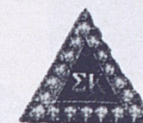
TEXAS GAMMA



Founded at Monmouth College, April 28, 1867  
 Number of collegiate chapters — 105  
 Colors — Wine and silver blue  
 Insignia — Golden arrow with Greek letters inscribed on feathers  
 Publication — "The Arrow"  
 Philanthropy — Founding and maintenance of the Pi Beta Phi Settlement School in Gatlinburg, Tennessee  
 Nickname — Pi Phi  
 Outstanding Events — Ivy League Dance, Presentation, Dinner Dance, Annual Santa Fe Retreat at Easter  
 President — Linda Barnhill  
 Rush Chairman — Betty Russell

## Sigma Kappa

GAMMA IOTA



Founded at Colby College in 1874  
 Number of collegiate chapters — 99  
 Colors — Maroon and lavender  
 Insignia — Gold triangle supporting a raised triangle of maroon enamel bearing the Greek letters in gold  
 Flower — Violet  
 Publication — "The Sigma Kappa Triangle"  
 Philanthropy — The Main Sea Coast Mission, National Gerontology Program, American Girls' Greek School, Salonika  
 Nickname — Sigma  
 Outstanding Events — Presentation Dance, Dinner Dance, Founders' Day Banquet, Retreat, Mr. Pledge Dance, Pledge Levi Dance  
 President — Kay Lane  
 Rush Chairman — Wylda Thomas



*Left to right: Wylda Thomas, rush chairman; Kay Lane, president; June Smith, pledge trainer; Sandy Sellers, first vice president.*





Seated, left to right: Betty Davis, vice president; Donna Peachee, president. Standing, left to right: Judy Pettitt, pledge trainer; Joan Lancaster, membership chairman.

## Zeta Tau Alpha

GAMMA TAU



Founded at Longwood College, Virginia, October 15, 1898

Number of collegiate chapters — 104

Colors — Steel gray and turquoise

Insignia — Shield of black enamel superimposed on a shield of gold; black shield bears five-pointed crown and Greek letters

Flower — White violet

Publication — "Themis"

Philanthropy — Work in cooperation with the National Society of Crippled Children and Adults in publishing a manual on the treatment of the cerebral palsied

Nickname — Zeta

Outstanding Events — Balloon Sale for the March of Dimes, Spring Presentation, Christmas Party for Negro Children, Dinner Dance, Zeta Week, Farewell Luncheon

President — Donna Peachee

Rush Chairman — Joan Lancaster

## Appendix

### CONSTITUTION AND BY-LAWS OF THE ASSOCIATION OF WOMEN STUDENTS

#### ARTICLE I Name

SECTION 1. The name of this organization shall be the Association of Women Students of Texas Technological College.

#### ARTICLE II

SECTION 1. The objects of the Association of Women Students shall be:

1. To act as a coordinating body of all women's organizations in setting the standards of living and working together on the campus.
2. To promote high scholarship among the women students at Texas Tech.
3. To aim for strong student government and a mutual understanding between administration and students.
4. To strengthen the spirit of unity and fellowship among the women of Texas Tech and to encourage closer relationships between town girls and the girls on the campus.
5. To develop leadership and promote school spirit through the encouragement of women's participation in government and college activities.

SECTION 2. The Association of Women Students shall operate under the powers set forth in this Constitution.

SECTION 3. Additional powers will be granted the council each year according to the progression and capability exhibited by the previous council and Association.

#### ARTICLE III Members

SECTION 1. Every woman student enrolled at Texas Tech shall be a member of the Association and shall pay dues at the time of registration.

SECTION 2. The Dean of Women and an Assistant Dean of Women shall be ex-officio members of the organization. An Assistant Dean of Women shall act as an advisor to the Association.

SECTION 3. Each woman student of Texas Tech who resides in a private home is also eligible for membership in the "Town Girls Club." (This organization is set up for town girls, in the hope that through such an organization a closer unity can be gained between the town girls and the girls residing on the campus.)

#### ARTICLE IV

SECTION 1. The following officers shall serve as the executive body of the Association of Women Students and the AWS general council.

SECTION 2. Officers shall be:

1. President
2. First Vice President
3. Second Vice President
4. Third Vice President
5. Secretary
6. Treasurer
7. Judiciary Chairman
8. IAWS Representative

SECTION 3. Qualifications for officers:

1. They shall maintain a 1.5 overall grade

point average for all the time they have been in school and a 1.5 grade point average for the previous semester at Tech.

2. They shall have been enrolled in Tech for at least one semester before being nominated or elected.
3. The president, first and third vice presidents and the IAWS representative shall have been a member of the AWS Council for at least a year previous to the term they serve as an officer. The third vice president must be in summer school or from the surrounding area.
4. The president shall be of senior classification when she serves. She must have completed 90 credit hours at the time of taking office in the fall.
5. The vice presidents, secretary, treasurer, and IAWS representative shall be at least a junior at the beginning of their term of office.
6. The Judiciary Council chairman shall be at least a junior at the beginning of her term of office, and have served on Judiciary Council, Panhellenic Judiciary Council, or Advisory Council at least one year.
7. The second vice president shall have been a member of the AWS Council or WRC for a period of at least a year previous to her term of office.

#### SECTION 4. Elections

1. The officers shall be elected by the women students of the college.
2. The term of office for officers and members of the AWS Council shall be one school year.
3. A nominating committee composed of all members of the council who have completed 90 credit hours shall prepare a slate of officers to be presented at a nominating assembly, where other nominations of qualified girls may be made from the floor.

#### ARTICLE V Duties of Officers

##### SECTION 1. President

1. It shall be the duty of the president to preside at the meeting of the Association.
2. She shall exercise supervision over the activities of the Association and be alert to the needs of the campus.
3. She is also president of the AWS Council and presides over this governing body.
4. It shall be the duty of the president to see that the provisions of the Constitution are carried out.
5. She shall have the power to appoint the chairman of all committees named in the Constitution.
6. She shall act as ex-officio member of all committees.
7. She may call a meeting of the council or of the Association with the consent of the secretary.

##### SECTION 2. First Vice President

1. It shall be the duty of the vice president to preside in the absence of the president.
2. She shall assist the president in the direction of the affairs of the Association and the Council and shall assume the duties of the president in case the office of the president is left vacant.
3. She shall act as the chairman of the "Big-Little Sister Committee."
4. She shall supervise the AWS elections.

##### SECTION 3. Second Vice President

1. She shall preside at the meeting of the Women's Residence Council.
2. She shall keep a complete record of the



activities of the Women's Residence Council and shall make regular reports to the AWS Council.

#### SECTION 4. Third Vice President

1. The duties of the third vice president shall read: It shall be the duty of the third vice president to be in charge of and supervise AWS activities during the summer.

#### SECTION 5. Secretary

1. It shall be the duty of the secretary to keep the records of the actions and meetings of the Association and the Council.
2. She shall take care of all council correspondence.
3. She shall file and preserve all reports and papers of the Association.
4. It shall be the duty of the secretary to report and publicize all activities of AWS through "The Toreador," town papers, campus bulletins, alumni news, and in any other possible way.

#### SECTION 6. Treasurer

1. It shall be the duty of the treasurer to collect all funds and fines for lack of attendance and care for all bills authorized by the advisor.
2. She shall have charge of the Association funds.
3. She shall keep a strict and permanent record of all expenses.
4. She shall make a financial report annually and present a proposed budget for the following year. She shall act as ex-officio member of all committees involving finance.

#### SECTION 7. Judiciary Chairman

1. It shall be the duty of the Judiciary chairman to preside at Judiciary Council meetings, and to act as liaison between Judiciary Council and AWS.

#### SECTION 8. IAWS Representative

1. The IAWS representative shall be in charge of the clearing house at Texas Tech and she shall take care of all correspondence with member schools of IAWS.

#### SECTION 9.

1. The AWS representative from organizations shall be a sophomore if possible.

### ARTICLE VI

#### AWS General Council

SECTION 1. The purpose of the council shall be to serve as a governing body for the Association and to act as a coordinator of all campus activities engaged in by women students.

SECTION 2. The council shall be composed of the eight officers elected by the Association of Women Students, one girl elected by each of the four classes, and one representative from each of the women's organizations on the campus. At present there are: Alpha Chi Omega, Alpha Lambda Delta, Alpha Phi, Angel Flight, Book Reviewers, Casa Linda, Delta Delta Delta, Delta Gamma, Doak Hall, Drane Hall, Freshman Class, Gamma Phi Beta, Home Economics Club, Horn Hall, Junior Class, Junior Council, Kappa Alpha Theta, Kappa Kappa Gamma, Knapp Hall, Major-Minor Club, Mortar Board, Mu Phi Epsilon, Panhellenic, Junior Panhellenic, Phi Gamma Nu, Phi Mu, Phi Upsilon Omicron, Pi Beta Phi, Senior Class, Sigma Kappa, Sophomore Class, Tau Beta Sigma, Tech Women's Art Club, Theta Sigma Phi, Town Girls' Club, Weeks Hall, West Hall, and Zeta Tau Alpha.

SECTION 3. The council shall meet every week unless otherwise stated.

SECTION 4. In case the office of the president is left vacant, the first vice president shall become president, and a new vice presi-

dent shall be elected by the council. If for any reason a vacancy occurs in any of the other elected offices, the council shall elect someone to fill the vacancy.

SECTION 5. Scholastic eligibility for the members of the council shall be a 1.0 overall grade point average, as well as a 1.0 grade point average for the preceding semester.

SECTION 6. If it is impossible for a council member to attend a meeting, it is required that she send an alternate from her organization. This alternate shall not be a member who is already on the council; i.e., no woman shall represent two organizations at a council meeting.

SECTION 7. If any organization is not represented by either the regular representative or an alternate, the fine shall be \$1.00, paid by the organization.

SECTION 8. Members of the council who are absent a total of three (3) council meetings in any one semester without adequate excuses and the attendance of an alternate in her place shall be considered inactive. The representative shall send a written excuse with her alternate, the validity of which will be decided by the Executive Council. The secretary will notify the organization of the inactivity of its representative, and the organization should send a new regular representative.

SECTION 9. The secretary should be notified by the absent member before the following meeting of the reason for her absence.

### ARTICLE VII

#### Women's Residence Council

#### SECTION 1. Membership

1. The second vice president of AWS shall serve as chairman of the Women's Residence Council.
2. Other members of the council shall consist of the vice presidents and AWS representatives of each residence hall and Casa Linda.
3. The office of the secretary-treasurer shall rotate in alphabetical order among the residence halls and Casa Linda.

SECTION 2. Duties of Women's Residence Council.

1. The Women's Residence Council shall act in collaboration with the Dean of Women and Legislature on matters of group living.
2. The Women's Residence Council shall serve as the policy making body of the women's residence halls, and shall submit recommendations to be approved by the AWS Council and the Dean of Women.

### ARTICLE VIII

#### Amendments

SECTION 1. The Constitution may be amended at a regular meeting of the Council of the Association of Women Students provided that there are two-thirds of the members present and that the amendments have been read at the council meeting preceding the one at which the vote is taken.

SECTION 2. The proposed amendments must be posted immediately after the meeting at which they are presented to the council.

### ARTICLE IX

#### Committees

SECTION 1. The Nominating Committee shall be composed of the members of the council who have completed 90 credit hours.

SECTION 2. There shall be an executive committee composed of all the officers of AWS, and it shall be their duty to organize and eliminate unnecessary details in the material to be covered in council meetings.

SECTION 3. There shall be such other committees as the Association or council may demand.

SECTION 4. The president shall be an ex-officio member of all committees.

SECTION 5. The treasurer shall act as ex-officio member of all committees involving finance.

## AWS Activities Point System

#### TOREADOR

editor, 20  
asst. editors (managing, news, campus, issue, sports), 15  
business mgr., 18

#### LA VENTANA

editor, 20  
asst. editor, 15  
section editor, 10

#### SORORITIES

president, 18  
vice president (if not pledge trainer), 6  
recording secretary, 6  
corresponding secretary, 10  
treasurer, 15  
pledge trainer, 15  
social chairman, 12  
rush chairman, 7  
scholarship chairman, 7  
other officers or committee chairmen, 5  
officers of pledge class — one-half the points for the corresponding chapter office (ex. pres., 9)  
member or pledge, 1

#### AWS

president, 15  
second vice pres. (WRC pres.), 13  
IAWS rep., 11  
first vice pres., 11  
third vice pres., 11  
rep. from organizations, 4 (except residence hall rep.)  
rep. from residence hall, 11  
secretary, 11  
treasurer, 11  
Judiciary Council chairman, 11

#### TECH UNION

president, 20  
vice president, 11  
public relations, 11  
personnel, 11  
committee chairman, 8  
secretary, 6  
treasurer, 5  
executive asst., 6  
council member, 4

#### BSO

president, 18  
vice president, 10  
secretary, 10  
treasurer, 6  
representative from organization, 1  
executive council (except officers already listed), 3  
committee chairman, 3

#### RESIDENCE HALLS

president, 17  
other officers, 5  
legislator, 5  
advisory council, 3  
chairman (such as social), 5  
freshman rep. (junior legislator), 3

### ARTICLE X

#### National Convention

SECTION 1. The expenses of the official delegates to the National Convention shall be paid by the Association of Women Students.

SECTION 2. These delegates shall be the incoming president, the outgoing president, and the advisor or their alternates which will be elected by the council.

#### STUDENT BODY

president, 20  
other major offices, 17

#### STUDENT COUNCIL

representative, 8

#### FRESHMAN CLASS

president, 10  
vice president, 10  
secretary-treasurer, 10

#### FRESHMAN COUNCIL

representative, 8

#### PANHELLENIC

president, 15  
vice president, 13  
rush chairman, 12  
activities chairman, 13  
committee chairman (other than those already listed), 7  
secretary, 7  
treasurer, 7  
representative, 4

#### JUNIOR PANHELLENIC

all officers, 5  
members, 3

#### VARSITY SHOW

chairman, 15  
asst. chairman, 12  
director, 15  
producer, 15  
cast, 11

#### SPEECH PLAYS, DEPARTMENTAL SHOWS

all participants, 9 (for each show)

#### MOTAR BOARD

president, 10  
projects chairmen, 10  
secretary, 6  
treasurer, 6  
other officers, 4  
member, 1

#### CHEERLEADER, 10

#### FRESHMAN CHEERLEADER, 5

#### ROTC SWEETHEART, 2

#### CLASSES

president, 12  
vice president, 9  
secretary-treasurer, 7  
committee chairmen, 7

#### ANGEL FLIGHT

drillmaster, 7  
president, 10  
other officers, 6  
member or alternate, 5

#### TECH CHOIR, 4

#### TECH SINGERS, 3



**BAND**

member, 3  
majorette, 3  
officer, 4

**CHAIRMAN OF HOME ECONOMICS OPEN HOUSE, 8****CHAIRMAN OF DAD'S DAY, 8****HONORARIES AND DEPARTMENTAL CLUBS**

president, 5  
vice pres., 4  
other officers, 3  
committee chairman, 2  
member, 1

**RELIGIOUS AND MUTUAL INTEREST CLUBS**

president, 4  
vice pres., 3  
other officers, 2  
member, 1

**INTERCOLLEGIATE RELIGIOUS COUNCIL**

president, 8  
other officers, 5  
member, 1

**WORKING HOURS**

1 point per 2 hrs. work a week

**GENERAL:**

1. The point system is based on time consumption, rather than on prestige.

2. Maximum number of points an upper-classman may hold at any one time is 35. Freshmen women are limited to 25 points maximum. This is not cumulative. The points are in effect only as long as the office is held.

3. No woman may hold more than one 20-point office at one time.

4. If a woman is an officer, chairman or has another office for which points are given, she does not count her points for membership, also. The membership points are counted if she has no position.

5. Any woman who wishes to appeal her case, feeling she has substantial reason to deviate from the maximum points allowed, may appear before Judiciary Council. The Council will decide on each case individually.

6. The purpose of the point system is to benefit the individual, the organization, and the campus. It is to avoid having too few students accept all the responsibility, to enable those who are capable to develop their abilities, to keep outside activities from interfering unduly with the student's academic program, and to encourage each woman student to spend her time on activities in which she is most interested and to choose her activities carefully.

**NOTES**



Printed by  
THE TEXAS TECH PRESS  
Texas Technological College  
Lubbock



## *Women's Creed*

I believe in the women of this college, in their ideals and sincerity of purpose.

I believe in my ability to use wisely the privileges of self government and will strive to accept its responsibilities.

I believe that my purpose in college is to learn to think. I will present my best efforts in seeking what is true and will regard the classroom as a place for unquestionable honesty.

I believe in myself. Recognizing both my strengths and weaknesses, I will strive to follow the Rule of Life — that of charity toward others and service to all.

