

Texas Tech Magazine


Volume VII

March, 1943

Number 7



HOME ECONOMICS EDITION



WOMEN AT WORK
It is estimated 15,000,000 women
are employed in U. S. Industry today
YOU MAY BE NEEDED NOW
Ask at your nearest United States
Employment Service Office

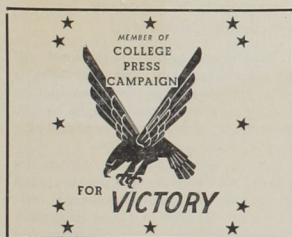
It's CHESTERFIELD

for my taste

When you're doing a bang-up job you want a bang-up smoke and for anybody's money you can't buy a better cigarette than Chesterfield.

Try them yourself...you'll find Chesterfields as Mild and Cool as the day is long...and Better-Tasting, too.

WHERE A CIGARETTE COUNTS MOST
It's Chesterfield



THE TEXAS TECH MAGAZINE

Vol. 7, No. 7 March, 1943

L. E. Settle Managing Editor

Official Publication Sponsored by Alumni
and Ex-Students Association of Texas
Technological College

Published Monthly (except July and
August) at Lubbock, Texas
Editorial and Business Offices
109 Administration Building
Texas Technological College

Entered as Second Class Matter February
17, 1938, at Post Office in Lubbock,
Texas, Under the Act of
March 3, 1879

SUBSCRIPTION PRICE:

\$1.50 PER SCHOLASTIC YEAR

SINGLE COPY 20c

Executive Committee

Texas Tech Alumni and Ex-Students
Association

Royal Furgeson, '37 President
Lubbock

L. M. Hargraves, '35, '42 1st V.-President
Wolfforth

Anne Hammons, '29, '33 2nd V.-President
Dallas

George Langford, '32 Athletic Rep.
Lubbock

Ward H. Garrison, '34 Three Year Director
Dallas

Jennings T. Lewis, '35 Three Year Director
In Service

Joe E. Webb, '35, '40 Three Year Director
Mason

Lloyd Croslin, '30, '33 Retiring President
Lubbock

Dorothy Rylander, '31 Executive Secretary
Texas Tech

L. E. Settle, '42 Administrative Secretary
Texas Tech

Dean Weeks Greets Alumnae

Dietitians From Tech Accepting Places Of Leadership

Dietitians in the field from Tech have increased from 27 last year to 36 now. Frances Cleveland and Vesta Grace Rogers are with Pentagon Food Services, Washington, D. C.; Marie Collins, now Mrs. Charles C. Carner, Jr., is at San Antonio State hospital; Beatrice Heatley and Mary Burk Yeager are at Snyder Hall, Southern Methodist University, Dallas.

Elaine Huff, who graduated in February, is assistant dietitian at University Commons in Austin; Helen Lytle Waters is dietitian at women's Dorm No. 1, Tech; Jean Spencer is a student dietitian at Grassland hospital, Valhalla, N. Y.; Margaret L. Anderson, now Mrs. James W. Hodge, Jr., is at Wm. Beaumont hospital; Catherine Collier has gone from the girls' dormitory at Tech to Scott-White hospital at Temple.

Marian Draper is at Lamar college at Beaumont; Dorothy Gleason, now Mrs. W. D. Murray, is at St. Mary's hospital in Evansville, Indiana; Billie Jean Hightower is at West Hall, Tech campus; Geraldine Hochstein, now Mrs. W. W. Hastings, has changed from St. Anthony's hospital at Oklahoma City to the Indian hospital at Tahlequah, Oklahoma; Lottie Mae Reed is head dietitian at St. Luke's hospital, Pasadena, California, and Pauline Nanetta Morris has been student dietitian there.

Evelyn Patty is student dietitian at Walter Reed hospital, Washington, D. C.; Gertrude Samson has moved from City hospital at St. Louis to T.C.U. in Fort Worth; Martha Merle Sellers is now at the University of Alabama, Tuscaloosa; Mary Etta Vernon has moved from a position in the public school lunchroom system in Dallas to lunchroom supervisor in Orange public schools, Orange, Texas; and Mildred Wagner is the Home Economics Tea Room, University of Texas.

Duncan F. Simmons is sanitarian of McKinley County Health Department at Gallup, New Mexico.

Mrs. John C. Rhader, the former Orvalene Price, and Elizabeth Chenoweth are counselors of the housing project at Orange, Texas.

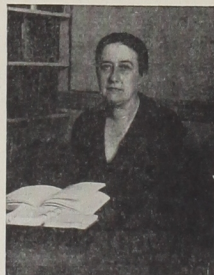
COVER:

Doris Nell Tippet, Earlene Dowell and Helen Walker leaving entrance to H. E. Building.

To the Home Economics Alumnae:

The faculty and students of the Division of Home Economics send greeting and good wishes to the alumnae. The March issue of the Tech Magazine will again this year take the place of the Annual News Letter. We hope that you will enjoy reading the magazine and that you will consider it a personal message from Tech.

These are busy times, I am sure, for each of you. Home Economics trained women have a real contribution to make



DEAN MARGARET W. WEEKS

to the war effort. There is a **great** need for home economics teachers, for dietitians, for nursery school directors, and for other professional workers in home economics. This means that many of you who, perhaps, have not been engaged in professional work aside from homemaking, are now thinking about or have actually entered the professional ranks again. To you may I say that we at Tech are glad to offer you our assistance and help. Perhaps you are feeling the need for refresher courses. If so, the summer school is offering this year special courses to meet your needs. Also, we are glad to put you in touch with positions. Please write to us. Your services are needed.

Home Economics graduates of Tech are filling interesting positions as you will see from reading this issue of the Tech Magazine. It has been a pleasure to hear from so many of you from time to time during the year. In these days of change it is difficult to keep the correct addresses for many of you. However, we hope that you will continue to keep us informed of changes in address.

Our personal greeting and cordial good wishes are yours.

Margaret W. Weeks, Dean

TEXAS TECH MAGAZINE

Journal Of Nutrition Accepts Research Article

Miss Jonnie McCrery, head professor of foods and nutrition, Dr. Mina W. Lamb and Mrs. Neva Deen Bavousett, assistant professors, have completed research work on the basal metabolism of 124 women ranging in age from 18 to 38 years with a Benedict-Roth metabolism apparatus. Results of the research will appear in the March issue of the Journal of Nutrition.

Results on basal metabolism of normal college women have been reported from time to time, but there has been no significant variation between the age groups. Subjects of this study are larger in stature than those of any group reported, Miss McCrery explained.

The subjects were 124 young women selected on the basis of health, age and the altitude at which they had lived for a six-month period previous to the determination of their basal metabolism. One hundred and five of the 124 subjects were within the range of 18 to 22 years, while those from 23 to 28 years of age were placed in one group. However, statistics show that the metabolism does not change appreciably during this period. All subjects were therefore, normal specimens, each being representative of her age.

The authors found that the data do not differ consistently in comparing the results obtained on these subjects with those of like groups. Studies involving fewer subjects of a more limited age range are not statistically comparable. The authors report that any differences which may occur is the result of slight but insignificant differences in technique and interpretation of the data which various authors have chosen to make.

Doris Nell Tippet and Miriam Meading, seniors, have recently completed a series of tests on effects of vitamin A on vision. Apparatus for measuring the vitamin A nutrition of the 76 college students and instructors is the bio-photometer. The study was made on women students and studies using men are anticipated when adequate equipment and a suitable laboratory can be obtained.

Eight per cent of the subjects scored perfect responses, 24 per cent showed good vitamin A nutrition, 51 per cent fair, and 7 per cent showed records of varying vitamin A deficiency.

The work just completed is part of a more extensive study of vitamin A nutrition being made under direction of Dr. Mina Wolf Lamb, assistant professor of foods and nutrition.

Open House Will Not Be Held This Year

The most outstanding effect of war on the home economics division is its decision not to hold the annual Open House. According to Dean Margaret W. Weeks, every student and faculty member has only so much time for outside activities, and that time should be devoted to helping with war programs sponsored on the campus.

Other reasons for elimination of Open House this year are that this program requires money and materials, some of which are listed as shortages. Purpose of the show has been to demonstrate the work of the home economics division to Texas high school students and their parents. Tire and gasoline rationing would prevent many from attending this year.

Home economics-sponsored war programs on the campus include the making of 4800 surgical masks and classes in home nursing, both conducted in cooperation with the American Red Cross.

"I believe all students feel that the home economics division is making a greater contribution to the war effort by postponing Open House than it would by holding it," Dean Weeks said. "In this way every girl may take a more active part in war-time programs."

Borgman Is Editor Of The Texas News Letter

The Texas News Letter, official organ of the Texas Home Economics association, is edited this year by Miss Bernice Borgman, assistant professor in child development. She was appointed to the position by Dr. E. S. Eppright, president of the association and head of homemaking at the Texas State College for Women in Denton. Miss Mary K. Fleming of West Texas State Teachers college, Canyon, preceded Miss Borgman as editor.

Mrs. Lila Allred Kinchen, assistant professor of clothing and textiles, Mrs. Jessie Walker Bateman, Tech graduate and teacher of homemaking in Lubbock Junior High school, and Miss Ella Mae Lyle, assistant professor in home economics education, have been selected as assistants to Miss Borgman.

The Texas News Letter, published three times a year, comes out in February, May and November, and goes to all members of the Texas Home Economics association. The cover for the February issue, just completed, was designed by Miss Elizabeth Hawley, assistant professor in applied arts. The magazine contains articles by Miss Martye Poindexter on "Attractive House Plans for

Experiments In Cookery Are Being Conducted

Experimental cookery with flours, sugar substitutes, fats and vegetables is being emphasized in the introductory class for cookery research taught by Dr. Mina Marie Wolf Lamb, assistant professor of foods and nutrition.

Among special problems chosen by students this semester are: making good refrigerator ice cream; developing recipes for use of yeast in cakes; jelly making with different kinds of fruits and acids; and recipes using soybeans.

Recipes are developed for the use of vita-yam flour made from sweet potato, soybean, grain sorghum, cotton seed and rye flours, instead of wheat flour for cakes, pastries, quick breaks and yeast breads. Home ground flour is also compared to commercially ground flours.

Candymaking is employed to illustrate the use of all kinds of sugars and sugar substitutes. Different proportions of sugar and the result of adding acids to sugar solutions are studies.

Tests are being made with chicken fat and leftover fat drippings for cake making.

A special study is being made to create appetizing dishes using beans grown in West Texas, which are more difficult to cook than those grown elsewhere.

Effect of gas and electric stoves and the effect of iron and other utensils on the finished products are examined.

Poindexter Aids Defense Housing

Government authorities who organized a large automotive training school at Cisco last fall, considered important the influence of pleasant living quarters on the morale of women civilian war workers. Miss Martye Poindexter, professor of applied arts, was asked to assist in making living quarters in the two Cisco hotels pleasant and attractive.

In cooperation with Miss Ruth Huey, state director of homemaking, inspection of the two hotels was made and recommendations were approved. The furniture was made lighter and more cheerful with new slip covers, walls were repainted in lighter values, window curtains in fresh colors were supplied, and ten-watt bulbs were replaced in corridors and restrooms by larger lights. Recreation rooms as well as bedrooms were given careful consideration.

Women War Workers" and Dr. Mina Wolf Lamb on "Share and Share Alike." Tech notes were compiled by members of the class in home economics journalism.

H. E. Club Is Aiding In War Effort

The Home Economics Club has carried out several projects this year. At present the club is sponsoring a Red Cross Home Nursing Course for students, which began March 1 and will continue for six weeks. The two classes with 35 students in each, are being taught by two graduate nurses. A Red Cross certificate will be given to those who complete the necessary requirements for the course.

Cooperating in the Campus Beautification Campaign, club members, assisted by aggies, held a "clean-up day" on March 13 around the Home Economics building. Shrubbyery was planted, trees were pruned, and flower beds cleaned out.

In collaboration with Phi Upsilon Omicron, the club has been sponsoring the sale of Defense Stamps again this year. So far \$211.10 in Defense Stamps have been sold. As has been the custom in the past, the club will contribute \$100 to the Margaret W. Weeks' Loan Fund. A pictures show, "The Road to Happiness" was sponsored by club members in November, with a profit of approximately \$20.

The annual spring banquet will not be held this year, as dormitory or hotel reservations cannot be made due to crowded conditions. A picnic will be given April 30 for club members. Other plans for the year include a program on consumer education by Phi U members, a movie night, and a program entitled "What Americans Eat" which will give food habits and customs of the American people.

Past social activities of the club include the Howdy Picnic, reception for campus clubs, Hallowe'en party, and the Aggie-Home Economics party. Approximately 100 home economics freshmen and transfers were welcomed at the Howdy Picnic in September. The reception for campus clubs, held in the Home Management House December 5, was attended by 250 members of the various clubs and faculty members. The aggie pavilion was the scene of the Aggie-Home Economics party in February.

Other club programs included a style show and a book review. The modeling of a traditional white wedding dress was an outstanding feature of the annual spring style show staged at Hemphill Wells March 9. Spring clothes of all types—evening dresses, work and play clothes and lingerie—were modeled. Dean James G. Allen reviewed the book, "A Handful of Dust," by an English novelist, Evelyn Waugh in February.

The Home Economics club is com-

Dean Weeks Heads Food, Nutrition Committee

Dean Margaret W. Weeks has been appointed chairman of the foods and nutrition committee of the Lubbock city-county council of defense. The committee is made up of representatives of the City Federation of Women's clubs, the PTA, nutrition and rationing committees, Home Demonstration council, Farm Security association, Medical and dental professions, and a food distributor.

This month the committee has sponsored an "explainer" plan in 13 Lubbock grocery stores to clarify rationing for customers. The program was undertaken in cooperation with the Lubbock county War Price and Rationing board and the OPA. About 400 Lubbock women participated, going into the grocery stores to aid shoppers the first week.

In a preliminary meeting, Miss Weeks offered helpful suggestions to housewives in making selection to the best advantage. Some of them were: Read the label for the weight of contents; find the point value of the food; check for other foods requiring fewer points and having similar food value; use fresh foods rather than canned foods whenever possible and "decide which is the best buy for you"; plan spending and study the point rationing chart before going to market.

Home economics students contributed their services in this effort by assisting teachers in the Lubbock schools with the registration of consumers for war ration book no. 2, the last week in February.

Before work began these girls heard a lecture on eight-point rationing given by R. S. Wilkinson of the OPA. Mr. Wilkinson said that the program we are using is almost identical with the system used in England.

The week after registration, home economics students went to the various grocery stores and helped customers in using their war rationing books. Posters and information sheets aided them in this work.

posited of 178 members. A candlelight service was the scene for initiation of members in October. The club sent four delegates to the Texas Home Economics Association meeting of College Clubs which met in Fort Worth at Texas Wesleyan in October. These delegates were Doris Nell Tippitt, president; Helen Walker, senior representative; Opal Thacker, junior representative; and Katie Lee Teague, sophomore representative.

Food Demonstrations Will Be Conducted By Home Ec Class

Food demonstrations on meat substitutes, meat extenders, and one-dish meals will be given at the Hub Homes Project community center April 21 and 28, and May 3. Students of Miss Mayme L. Twyford's foods demonstration class will plan and give the series of demonstrations. Mrs. Ganie Burford, Tech graduate and home economist of the project, is arranging the schedule. The Hub Homes is a government housing unit.


Before making their plans, the students will visit the homes to become acquainted with the needs of the housewives, and to learn what cooking equipment their audience has access to. Plans will be made and all recipes tested in the foods laboratory before they are presented to the Hub residents.

Each demonstration will be given by two students. On April 21, meat substitute dishes will be demonstrated and the recipes presented to the housewives in the audience. Substitutes to be used are dried beans, peas, and soybeans, and nuts, cheese, and eggs. Meat extender dishes, planned for April 28, will illustrate use of small amounts of meat combined with vegetables, rice, macaroni, spaghetti, or noodles. On May 3, preparation of one-dish meals will be demonstrated. This is a dish containing most of the protein and vegetables for the meal. A salad, bread, dessert, and beverage would complete the menu.

It's Smart to Trade
at
Sisters
CREDIT JEWELERS

FEATURING...
Hamilton
Elgin
Bulova
Gruen
Waltham
WATCHES

Buy With CONFIDENCE
PAY WITH EASE


1010 Broadway Lubbock, Texas

Tech Lends Miss Bowles To State Dept. For Spring

Miss Johnne Bowles, assistant professor of home economics education, was granted leave in March to work for the Homemaking Division of the State Department of Education on extended school services, mainly adult education. Recently Miss Bowles and other members of the home economics faculty have been cooperating with the Lubbock Junior Welfare League on a survey, attempting to find if there is need for a war nursery school in Lubbock. She was on leave last summer to organize a similar project at Texarkana, which opened in July.

The home economics division of Tech and the Junior Welfare League have been working in cooperation with schools in making the Lubbock survey. Sheets have been passed out in schools to check for need of a nursery school and members of the Parent-Teachers Association have used block mothers, who can make personal contacts around their homes, to get a closer check on mothers with children that are not of school age.

Information from the U. S. Employment service states that 1,532 Lubbock women had been employed between July 1, 1942, and January 20, 1943, not including 1,310 Lubbock women who did temporary agricultural work, and 9,000 Mexican and Negro cotton pickers. This service also listed 35 different types of jobs for women, including care of children. There were 15 women listed as employed in child care work.

In the Texarkana project, area needs were studied by community groups and problems listed. Such agencies as Chamber of Commerce, O.C.D., Junior Service League and Red Cross were contacted for aid in setting up plans for the school. Approval of the plan was given by the senior specialist of school facilities for this region, Federal Works Agency and the Office of Education. The school is operating on Lanham funds, provided through the Lanham act for helping to take care of emergency situations brought on by the war, particularly child care, but also including health, sanitation, housing, recreation, education and other over-worked services.

The school, set up in a housing project, can care for 30 children from 2 to 6 years of age from 7 a.m. to 5 p.m. Equipment was chosen according to nursery school sizes and needs. The personnel includes a director, Charlotte Ballow, Tech graduate, two assistants with special training in nursery school work, a maid and a cook.

The nursery school routine gives definite physical, mental, and social training.

H. E. Seniors Are Reporting On Outside Lectures

Plans for this semester's home economics senior lectures consist of reports from outside speakers. Their subjects coincide with national conditions as they affect the home economics profession and the homemaker.

With fourteen weekly class meetings and fifty senior students taking the course this semester, the system of inviting outside speakers is proving satisfactory.

February speakers were R. S. Wilkinson, district representative for the Office of Price Administration, who explained point rationing and how it works, and Miss Phyllis Drake, graduate assistant in foods and nutrition. Mr. Wilkinson showed charts issued from Washington and answered questions from faculty and students. Miss Drake reviewed her training in the five-day food inspection course in Austin. She quoted requirements for the inspecting job and salaries that accompany the various ranks in position.

This month's speakers include Miss Johnne Bowles, assistant professor of home economics education, who reported on the home economist in defense nursery schools. Planning vocational education to meet wartime needs was the subject of the Southern Regional Conference discussed by Miss Ella Mae Lyle, assistant professor of home economics education. Miss Lyle was one of three Texas delegates to the Georgia convention, and the only Tech representative. Miss Gertrude Brent, district home management supervisor of the Farm Security Administration, is to discuss the opportunities of the home economist in the FSA. The work of the home counselor in housing units will be explained by Mrs. Ganie Burford, home counselor for Hub Homes. Mrs. Burford is a Tech graduate. Miss Ruth Huey, state director for homemaking education, will speak to

Activities of the day for a child in the school include morning inspection by a nurse, toilet training, supervised play, training in eating and good food habits, mid-morning and afternoon rest periods, and stories, music, singing and individual play. Parallel with the nursery school training, parent education is carried on by notes to the mothers of individual children, short conversations before and after school when the mothers leave the children and come after them, and by means of a news letter.

Upon completion of her work with the State Department of Education, Miss Bowles will return to Tech for the second semester of summer school.

senior home economics students late this month.

Topics planned for April will bring Mrs. Teresa B. Gegg, executive secretary of the Lubbock County American Red Cross, to tell about the educational program of the American Red Cross. Miss Kate Adele Hill, district home demonstration agent, is to discuss the home demonstration program in Texas. Opportunities for home economics women in Civil Service will be pointed out by a Civil Service representative.

"Home economics senior lectures vary according to the needs of the senior girls," Miss Mabel D. Erwin, head professor of clothing and textiles, points out. Each year the calendar is changed. One requirement, Miss Erwin stated, has not changed; that is for a written report.

The first three-day short course for home demonstration agents of district 2 was held at Tech in February. Of the 18 attending, four were Tech graduates of the home economics division. Instruction in chair seating and slip covering was given by Mrs. Bernice Claytor of College Station, specialist in home improvement, and Miss Mabel D. Erwin, head professor of clothing and textiles. Due to war conditions the contents of this course will be of special benefit to the communities represented, Miss Erwin said.

What the well-dressed WAAC should wear, correct and incorrect ensembles, and a traditional wedding party were featured in a spring style show at Hemphill-Wells company for Home Economics club members and their guests on March 9. The show was staged by home economics students under direction of Mrs. Vera Maxey of Hemphill-Wells. O. B. Ribble, Lubbock florist, demonstrated ways of wearing flowers with evening clothes.

Models appearing were chosen by the arrangement committee. Apparel worn by the models was furnished by the department store. About 200 persons attended.

WAACS from Tech's home economics division are Second Officer Vada Cole, Third Officers Parri Dee Agee and Betty Savage, Privates Wanda Louise Allen, Marjorie Fleming and Dorris Spann. Betty Savage returned to the campus in November and spoke to the women students under sponsorship of the Home Economics club.

Two February graduates, Olene Cook and Louise Cox, are now inspectors of navy materials with headquarters in Dallas.

Home Ec. Division To Have Full Summer School Schedule

The Division of Home Economics offers a full schedule of work during the 1943 Summer Session. In conformity with the accelerated college program, freshman students may complete an entire semester's work in fifteen weeks of the Summer Session. Full schedules are also offered for sophomore, junior, senior and graduate students.

Special courses to meet war needs are a part of the offerings during the 1943 Summer Session. Most of these courses carry graduate credit. In many cases, however, they may be taken by senior students.

Nursery school directors are needed for example, to direct nursery schools for children of mothers who are working in defense plants throughout Texas. Many such schools are opening and the need for nursery school teachers is acute. Home Economics and primary education majors can prepare themselves for this important work by supplementing undergraduate training with advanced courses in Nursery School Techniques which will be offered the first term of the summer school. Primary Education majors should also schedule the course Elementary Nutrition and Food Selection. The basic course in Child Development (Child Development 431) is also being offered in the first term of the Summer School and is prerequisite.

Designed to help teachers meet the present need for units in home care of the sick, home safety and common home health emergencies, a course in methods of teaching home care of the sick and home safety will be offered the second term of summer school by the department of home economics education assisted by Red Cross registered nurses. Students will be eligible to receive Red Cross certificates in home nursing and first aid on the satisfactory completion of the course. The course is known as H. E. Ed. 332, and carries three semester hours of graduate or advanced undergraduate credit. It will be offered the second term of Summer School.

A course called Methods of Leadership of Adults and Out-of-School Youth is especially designed to meet the wartime needs of leaders of adult groups in home and family living. Based on the principles of adult psychology basic in the interests and learning of adults and out-of-school youth, this course is planned for both individual and group counseling on problems of home and family living in the present emergency. It will

Births

Lt. and Mrs. C. J. Griggs are the parents of twin boys, Sidney Alan and Brian Rolf, born November 22. Mrs. Griggs is the former Fayrene Booker, '40.

Jerald Olen was born to Mr. and Mrs. Olen Crump September 20. Mrs. Crump, the former Jeraline Spotts, is a senior student.

Michael Gene was born to Mr. and Mrs. Gene Barnett on October 30. Mrs. Barnett is the former Beryl Duff, an ex-student.

Mr. and Mrs. Dan Dudley are parents of a son, Dan, Jr., born November 6.

be offered the second term of Summer School.

Because of the present shortages in furniture and textiles and because of high prices and rationing of such articles, home economists are in great demand for demonstrating practical methods of renovating and making home furnishings. Clothing 435—Home Furnishings—consists of three main divisions of work.

1. Repairing and finishing furniture.
2. Upholstering and making slip covers.
3. Making curtains, rugs and household linens.

Special topics include home dyeing, decorative stitches, table linens, bedding, lined draperies, draw curtains. In each division, actual construction and repair work done, and, in addition, a study of what to look for in buying, tools to use, present day substitutes and their care. This course will be offered the first term of Summer School.

Problems in Teaching Clothing will stress methods of demonstrating clothing and teaching groups, both in school and out of school, how to adapt some of the Red Cross clothing projects to different classroom levels. It will be offered the first term of summer school.

Because of the great need for dietitians, the course in large quantity cookery, Institutional Management 432, will be offered during the second six weeks of the summer session. This course is of interest not only to students preparing to be dietitians but to homemaking teachers who have the responsibility of the school lunch program.

The course in Food Preservation, which is given each summer during the first three weeks of the second term, will be of greater interest this year than ever before. This course is Foods 335 and carries three semester hours of graduate credit.

Mrs. Dudley was Nora Ellen Elliott, '33.

Mr. and Mrs. James T. Young, she the former Frances Weddle, are parents of James Wayne, born October 6. Birto Ralston Brumby, Jr. was born January 6. His mother is the former Jean McGee, '38.

Mr. and Mrs. M. A. Hill are parents of Donald Morris, born December 19. Mrs. Hill is the former Austine McDonald, '38.

Harry Lloyd was born to Mr. and Mrs. B. L. Milan December 14. Mrs. Milan is the former Joyce Black, '40.

Mr. and Mrs. Reese Master are parents of a son, James Reese, born April 17. Mrs. Master is the former Lucille Bowlin, '35.

Mr. and Mrs. John Allen Ramseur are the parents of John Randel, born October 3. Mrs. Ramseur is the former Doris Louise Benge, '39.

A girl, Lylen, was born to Mr. and Mrs. Martin Lyle Dent August 8. Mrs. Dent is the former Inez Holliman, '38.

Virginia Lee is the daughter born to Mr. and Mrs. Allard Vandiver June 14. The mother is Mary Lee Repass, '35.

Mr. and Mrs. Billy Bullock, she the former Lois Spraggins, '37, are parents of a daughter, Betty, born June 2.

Mr. and Mrs. Calvin Hazelwood are parents of a girl, Julianne, born April 18. Mrs. Hazelwood is the former Mary Glee Wilbanks, '34.

Patricia Sharon was born to Mr. and Mrs. A. E. Hammonds on December 19. The mother is the former Freddis Adkins, '34.

Patricia Imogene is the daughter born to Mr. and Mrs. Anthony Dengler on October 9. Mrs. Dengler is the former Julia Grace Roberts, '38.

Mr. and Mrs. Owen B. Harvey are parents of a girl, Carol Ann, born May 10. June Guinn Harvey, '40, is the mother.

Mr. and Mrs. James W. Partin, Jr. are parents of a son, James Elmer, born June 14. Mrs. Partin is the former Elsie Pendleton, '41.

Mr. and Mrs. Willard Martin of Lamesa are parents of a daughter, Vicki, born March 18. Mrs. Martin was enrolled at Tech as Mrs. Pharene Vincent Martin.

Marjory Ridley, now Mrs. C. H. Wilemon, is doing defense work at Globe Aircraft in Ft. Worth.

Kathleen Willman, now Mrs. K. P. Green, is a drill press operator in an airplane parts factory in Portland, Oregon.

Mrs. Howard Hurmence, the former Mary Frances Standefer, is nutrition consultant for New Mexico Department of Health, at Santa Fe.



Home Management House residents watch "their baby" at play.

Home Management House Selects New Baby

Selection of a new baby, planting of a patio victory garden, and absence of a laundry and clean-up boy constitute some of the changes for home management house residents this year.

Tommy Tice, the new baby, is the youngest child ever to be cared for at the home management house. He was two weeks old and weighed 5 pounds 4 ounces when he was brought to the house in October. He now weighs 12 pounds 8 ounces.

The victory garden will be planted in the patio by two of the residents as their improvement project. It is being dug up and six inches of new soil put in. Grass sod and violets will be moved elsewhere. Carrots, radishes, English peas, onions, tomatoes, beans, lettuce and turnips are some of the vegetables to be planted. Vegetables likely to be scarce this summer were chosen. Any surplus will be canned for next year.

"Preservation of foods from the garden will be added experience for the girls," Miss Frances Urban, supervisor of the house and home management instructor, says. "Many other foods to be used next year will be canned also. Included are fruits which will be preserved with sugar saved from the rationed allotment during fall and spring terms."

Because of war, no laundry or clean-up boy has been employed this year, so residents take turns doing the laundry with the new Bendix Home Laundry. In

Five Graduates Enrolled In Division of Home Economics

Five graduates are enrolled in the home economics division this year.

Miss Phyllis Drake, graduate assistant in foods and nutrition, is working on an M. A. degree in that department. A dietary survey of 64 Lubbock families and comparison with Bureau of Home Economics standards is the subject of her thesis. Miss Drake, former vocational major, taught in Slaton before returning to Tech this fall.

Miss Mary Opal Baker, newly appointed assistant to Miss Mozelle Craddock, head dietitian of the dormitories, is now taking courses toward her master's degree in institutional management. She is a graduate in home economics education from Southwest Texas State Teachers college in San Marcos.

Mrs. W. L. Bradshaw of Lubbock is completing requirements for an M. A. degree in home economics education. Her thesis, "Opportunities for Home Economics in Low Income Housing Projects," includes some historical information in this field and results of observation of local housing projects. She has been aided in her research by the cooperation of Mrs. Ganie Burford, head of the Hub Homes project and a Tech graduate.

Mrs. Drucilla Smith Barber, February graduate in home economics education, is enrolled in child development courses

groups they clean the yard, mop and wax floors.

National Magazine Prints Article On Casa Linda

Forecast, national magazine for home economists, published an article in December on Texas Tech's cooperative house. It was written by Edna Lou Prange, Tech senior.

In Casa Linda, the article explains, the number of students in arts and sciences and home economics is about equal. The arts and sciences student has opportunity to glean valuable information from the home economist; and the home economics student is able to put into practical use her technical training.

Casa Linda is run on an entirely self-governing basis. Two seniors are elected to serve as business manager and social director, respectively. Under their guidance, the house is managed without supervision of an official director.

Well-prepared and served meals are now planned by a resident, usually a home economics major. She plans menus and purchases food for each week. When this student graduates she is given a special recommendation from the home economics faculty for experience in planning meals, purchasing groceries and keeping within a restricted budget.

Last year Mrs. Mary W. Doak, dean of women and Miss Margaret W. Weeks, dean of home economics, agreed to this plan of self-government for residents in Casa Linda.

Articles on how and what to buy under food rationing are being prepared this spring for Tech News Service by members of the home economics faculty. This program is being carried on in cooperation with the War Price and Rationing board and the OPA.

Two publications have already been released, one on the importance of budgeting by Dean Margaret W. Weeks and the other on point value of cans by Miss Jonnie McCreary.

Six graduates have entered Farm Security work this year. They are: Alma Byers, at Dalhart; Floy Glenn, now Mrs. Lawrence H. Sides, at Big Spring; Maude Hooten at Stephenville; Mary Helen Johnson, at Wellington; Clarice Mackey; and Jessie Mae Rose, now Mrs. Orba Watson, at Silverton.

Dorothy Glady Harris is now an ambulance driver for the Pan-Tex Company in Amarillo.

and is an assistant in the nursery school. Ann Buckley, also assistant in the nursery school, is a 1941 graduate in clothing and textiles, now obtaining a B. S. in home economics education.

Calendar for the Complacent

- 1931—Manchuria seized by Japan.
 1935—Ethiopia invaded by Italy.
 1936—Rhine land militarized illegally by Germany.
 Ethiopia seized by Italy.
 Spain armed intervention by Germany and Italy.
 1937—China invaded by Japan.
 1938—Austria occupied by Germany.
 1939—Czechoslovakia seized by Germany.
 Albania occupied by Italy.
 Poland occupied by Germany.
 1940—Denmark occupied by Germany.
 Norway occupied by Germany.
 Belgium occupied by Germany.
 France occupied by Germany.
 Netherlands occupied by Germany.
 Luxembourg occupied by Germany.
 Rumania forced into Nazi orbit.
 Indo-China seized by Japan.
 1941—Yugoslavia invaded by Germany.
 Greece occupied by Germany.
 Russia invaded by Germany.
 Lithuania occupied by Germany.
 Latvia occupied by Germany.
 Estonia occupied by Germany.
 Thailand occupied by Japan.
 Pearl Harbor attacked by Japan.
 1942—Philippines occupied by Japan.
 Malaya occupied by Japan.
 Dutch East Indies occupied by Japan.
 Timor occupied by Japan.
 Burma occupied by Japan.



*"I'd rather draw a package of
 Sir Walter Raleigh"*

Blended from choice Kentucky burleys,
 Sir Walter Raleigh is extra mild—burns
 cool—with a delightful aroma all its own.

**SIR WALTER
 RALEIGH**
 PIPE TOBACCO

Smokes as sweet as it smells



*"Can you lend me a cup of thermite—I just need a little to
 finish up a batch of incendiaries!"*

ON THE HOME FRONT

A tavern operator in Seattle, Washington, reported that she had produced a second crop of blossoms on an Easter Lily plant by nourishing it with diluted beer.

A Milwaukee film theatre which operates 24 hours a day, serves free breakfasts to early morning customers. And other clients, chiefly defense workers, who drop in shortly after midnight, just off their late shift, are likewise fed free snacks when entering the cinema temple.

When her husband started to break all the Japanese made dishes in their house, Mrs. John Slaski of Milwaukee, Wisconsin, called for the police. She agreed with his sentiment, but she objected to his method. He was breaking the dishes over her head.

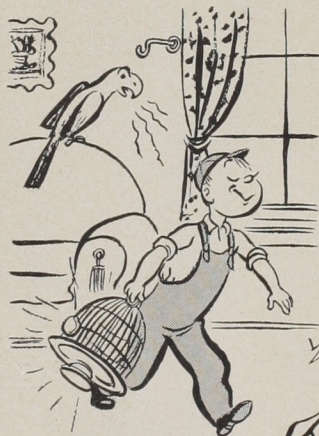
Richard Gwenn, a twenty-four-year old University instructor in Seattle, Washington, gave as his excuse for robbing a department store, "I was getting married this week and I wanted to get a good start in married life."

Perry Weatherston, an aircraft worker in Wichita, Kansas, fell down at the entrance to the factory's cafeteria just as the lunch gong sounded. Perry luckily escaped with footmarks, minor bruises and a broken shoulder. He lost his appetite, too.

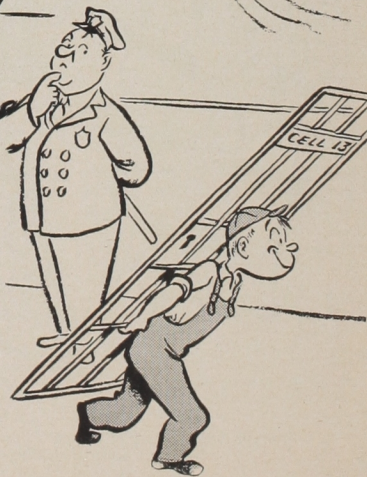
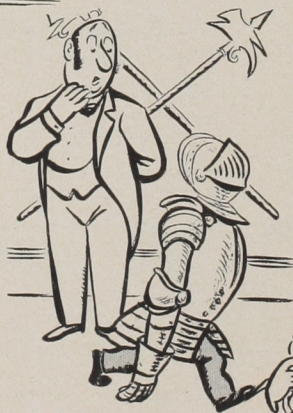


KID SALVAGE *says:*

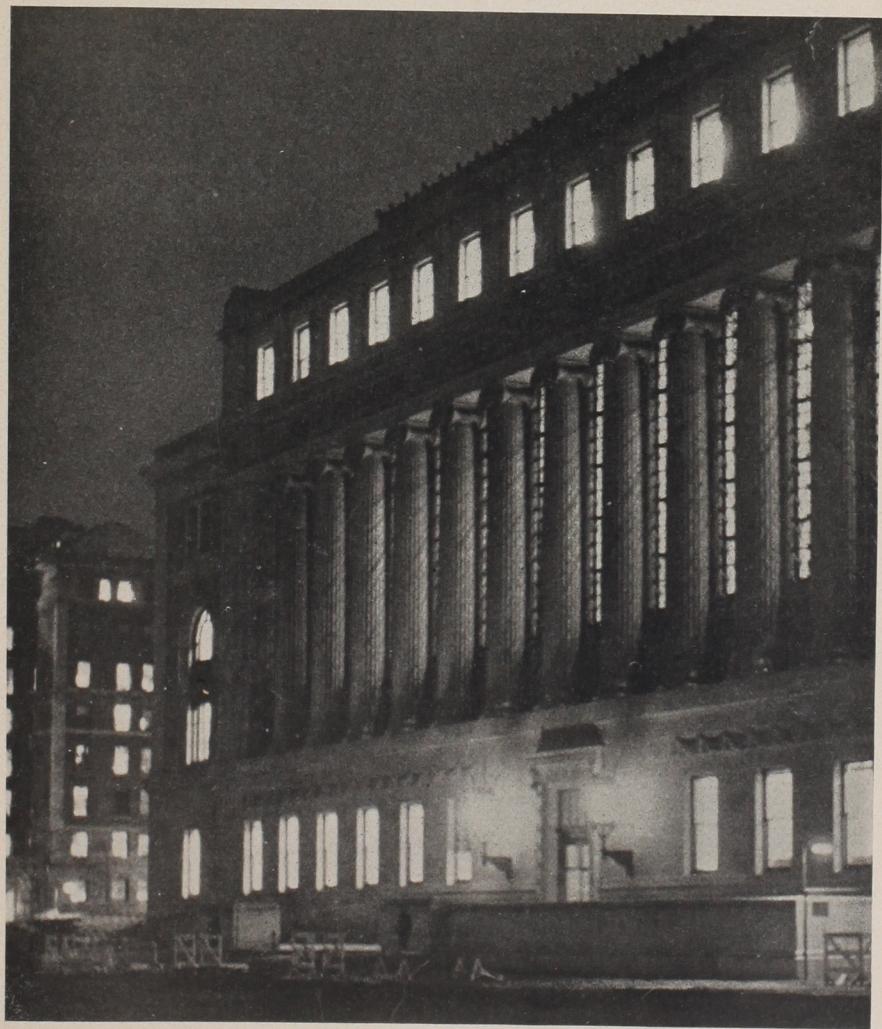
*To Hit the Jackpot
You've Got to Fill the
Scrap-Pot*



Drawn by
WILLIAM STEIG
for the
Office of War Information



Wm Steig



There is no dimout of education in America. Although the exigencies of total war require that certain adjustments be made, the fundamental principles of a free and liberal education continue and shall continue to exist."



WHAT THE ARMY AIR FORCES NEED FROM EDUCATION

by Brigadier General Lawrence F. Kuter

Deputy Chief of Staff, United States Army Air Forces

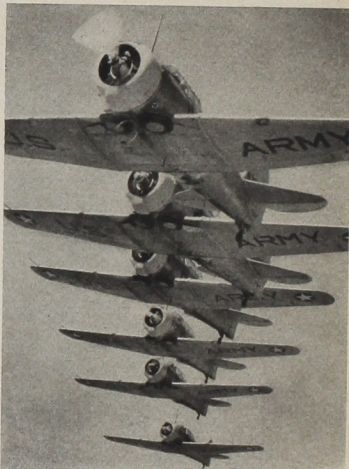
★ OUR whole Army Air Forces training program could be greatly accelerated if we did not have to spend time in reviewing the elementary phases of such subjects as mathematics and physics—subjects which can be taught in our schools. We would have more time for that specialized training which spells the margin between life and death, victory or defeat in aerial warfare. Not only are we cramped for time—we are also cramped for instructors in military specialties.

We are having to re-teach simple mathematics before we can teach the application of simple mathematics to military problems. We are having to re-teach basic principles of physics before we can teach their application to military and aeronautical equipment. Education can help us build a war-winning Air Force by relieving us of this great burden of fundamental instruction.

In addition to skill, training, and clear thinking, team play and coordi-

Right: Aerial Axis-busters rehearsal. Soon-to-be fighter pilots at the Air Forces Advanced Flying School at Kelly Field, Texas, fly their 200-mile-an-hour planes in spectacular echelon formation preparatory to winning their much coveted wings.

Below: Team play and coordination are requirements of the Army Air Forces. This crack aerial machine gunner is part of an unbeatable combination. He has a fast, accurate gun—and the world's best in the way of plane and pilot.



nation are requirements of the Army Air Forces. Our lads have the coordination and team play. We'll give them the military and aviation training. It is up to the schools to give them their fundamentals.

All of our training and our plans for employment are based on precision—precision manufacture, precision flying, precision navigation, precision gunnery, and precision bombing. . . .

That is the answer to the question—if the blasting of English cities by the Luftwaffe didn't bring England to her knees, how can the Army Air Force expect to knock out the Germans? The answer is in precision and in planning. Our heavy bombers did not go out on slum clearing projects at

Rouen, Abbeville. Our plans are not slum clearance plans for Berlin or for Tokio. We know what makes the German and the Jap war machine tick. A practicable number of one and two ton bombs, applied with precision on properly selected spots will stop that ticking for a long, long time. . . .

This war is a global war and we are building a six continent air force which is organizing for large-scale attack at the earliest possible moment. In Russia, in India, in Egypt, in the Caribbean, in Hawaii, in Australia, in China, in Great Britain, Air Force generals are building American Air Power which at the strategic moment will strike the enemy wherever he may be.

At first we may have thought we could buy our way out of this war. Then we got the idea we could produce our way out, but now it is beginning to dawn on the American people that we must *fight* our way out of it. It is an *all-out war . . . a war to the finish . . . the finish of the dictator or the finish of the Democracy*. Our democratic schools have a major role to play in our bid for a democratic world in which to continue to live.



Graduates Have Established Homes During Past Year

Doris Howell, '42, became the bride of Sol Davis at Post in September. They are living at Post.

Juanita Hughes was married to William T. Bryon at Spearman, Texas, January 17. Their address is Spearman.

Virginia Ruth Jennings and A/C Edgar Melvin Allday were married at Ellington Field November 14. She is teaching home economics at Georgetown, Texas, and he is at Midland.

Delilah Manire, '39, married Cason E. Spradley August 1. They are at home at Rt. 8, Lakewood, Ft. Worth, Texas.

Women's Dorm No. 2 was the scene of the marriage of Mary Leda McAdams, '37, to Dr. W. L. Cooper June 12. They are living at 222-6th S. W., Rochester, Minn.

Dorothy McCarter (Feb. '43) and Sgt. Charles D. Martin were married in Albuquerque, New Mexico, October 30.

Dora Nell McCarty, '41, became the bride of Simon Edward Carroll October 23. They are at home at 1805 W. 10th, Dallas.

Louise McCrummen, '40, was married to Frank R. Crow April 3 at Elkhart. She is in Plainview, and he in the army.

Laura Bell and Sgt. Burl Pigg were married in Lubbock March 14. They are now at 403 Lancaster St., Monroe, N. C.

Juanita Chance, '37, became the bride of Elmer W. Moncrief April 15. Their home is at 500 Hollywood, Dallas.

Marie Collins, '42, was married to Sgt. Charles C. Carsner, Jr. January 15 at San Antonio. Their address is 120 Ira Avenue, San Antonio.

Bula Dee Cox and Sgt. John P. Geyer were married December 22, and are at home at 2304-15, Lubbock. Mrs. Geyer graduated in February.

Mary Len Crawford, '40, became the bride of Roy Buford Austin December 27. Their address is Box 574, Childress, Texas.

Eleanor Doss, '41, married Ensign Lloyd Hahn in Dallas January 27. They are in California.

Zelma Elliott, '41 and Lt. Claude D. Emmons were married in Olney August 8. They are at 60th Bn., Camp Wolters, Texas.

Ione Gill, '39, married Sgt. Herbert O. Stroud May 25.

LaMerle Graves, '40, and Harold Aikens were married in Dallas September 5.

Maggie Henson became the bride of LeRoy Blanton Gaines in Memphis on August 27.

Annie Faye Miller, '40, became the bride of J. Wendell Watson at Morton August 9. Their address is 2005 Wilson St., Wichita Falls.

Lois Montgomery, '40, and Travis Mason were married at San Angelo April 5. They are at home at Tuscola, Texas.

On February 6, Ima Dora Richards, '38, became the bride of A/C James R. Haile at Maxwell Field Chapel, Montgomery, Alabama. They are at home in Montgomery.

Ursula Parris, '35, and Wilburn George were married in February, 1942. They live at 1313 N. Riverside Drive, Ft. Worth, Texas.

Ruth Marie Payne, '42, and Lt. Milton Roelofs were married in Lubbock September 12. The couple is at home at 2715-28, Lubbock.

Ruth Peden became the bride of Perry W. Walker December 15 in Lubbock. They live at Levelland.

Mary Elizabeth Price and Robert Grady Patterson were married at Pampa August 15. Mrs. Patterson is a '41 graduate.

Martha Ann Price, '42, became the bride of Vester Lee Smith in Pampa on October 10. They are at home at 2220 Broadway, Lubbock.

Marie Shook, '40, and Louis Purvis were married April 5 in Sweetwater.

Mr. and Mrs. M. C. Baumgardner were married in Abilene June 20. She is the former Rose Marie Randerson. They are living at 2401B-7, Lubbock.

Marjoray Ridley, '42, married C. Howard Wilemon in Ft. Worth on September 7. They live at 2927 Burchill Road, Ft. Worth.

Phoenix, Ariz. was the scene of the wedding of Wilma Rodgers, '42, and W. O. Keeney, Jr., on June 20. Their address is Box 858, Wickenburg, Ariz.

Valoris Shaffer, '40, and Ernest F. Osborn were married at Friona April 3. They make their home there.

In April, Marie Womack, '38, married Dewitt Robert Reid at Snyder. They are living at Lubbock.

Nina Wright, '42, and Sgt. John G. Shipp were married March 12, in Wichita Falls. Mrs. Shipp is in Snyder, and Sgt. Shipp at Sheppard Field, Texas.

Mary Yarbrough was married September 4 to Dr. William V. Coventry. Their home is 803 E. Ave. A, Temple, Texas.

Alva Clair McWhorter, '41, and Gordon P. Coughlin were married May 29 in Dallas, where they make their home. The address is 2219 Carnes Street.

Dorothy McCuiston, '40, and Cpl. Frank C. Jenkins were married in Arlington, Virginia on October 10. They are at home at Apt. 1, 2700 Q St., S.E. Washington, D.C.

Marguerite Brannen and Ensign James L. Snyder were married in Oakland, California August 30. Mrs. Snyder is in school this semester, and Ensign Snyder is in Rio de Janeiro.

Hazel Camp and Elwood Wright were married in Lubbock December 20.

Vernell Cockrum married Sgt. Delbert Mann September 24 in Big Spring. They are at home at 1100 Main Street, Big Spring.

Marydel Hawkins and Cpl. Robert Burgin Watkins were married at her home in Morton Nov. 1. They are at home at 1106 E. 30, Bryant.

Mary Ruth Lytle and Charles Thompson were married this year.

Clois Poindexter became the bride of Corance Crawford, aviation cadet, at Charleston, Missouri, December 24. Mrs. Crawford is still in Tech.

All Home Ec Practice Teaching To Be Done In Lubbock Schools

Because of war time conditions the department of home economics education is confining supervised observation and teaching to Lubbock high schools this year. For the past 13 years there were comparative contacts for student teachers with Frenship, a rural high school, Slaton's town high school and Lubbock city high schools.

The 48 practice teachers this year are following a new system by which students working in pairs teach a class for nine weeks and those working in groups of three teach a class for six weeks with supplementary experiences.

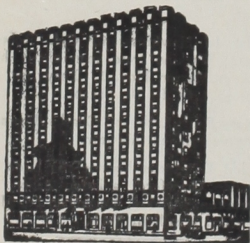
"With the rationing of tires and gasoline," Miss Vivian Johnson, head professor, explains, "it seemed patriotic to curtail travel to all schools outside of Lubbock for practice teaching."

HILTON HOTEL

LUBBOCK, TEXAS

Moderate Rates
Excellent Food

"Your Hotel On The Plains"



AL G. FINNELL
Manager

LUBBOCK'S NEWEST
AND FINEST

Another
Hilton Hotel



Applied arts students do chip carving. Pictured are Closs Poindexter Crawford, Mary McGowen and Miriam Meading

Faculty Notes

Three new instructors and three assistant professors, two babies and a wedding highlight home economics faculty notes this year. Two secretarial changes have been made in the division also.

Mrs. Neva Dean Bavousett is the new instructor in the department of foods and nutrition. She replaces Miss Ellen Kleppe, who resigned to become a member of the faculty at St. Olaf College in Northfield, Minn., where she received her B. A. degree.

Miss Jewel Golden, who taught last year at Winthrop college, Rock Hill, S. C., is now assistant professor of clothing and textiles, relieving Mrs. Edna Lyles Heineman this year. Miss Golden, whose home is Opelika, Ala., did undergraduate work at Alabama Polytechnic institute and graduate work at Columbia university. Mr. and Mrs. E. R. Heineman are parents of a son, William Richard, born October 15.

Miss Francis Urban of Iowa State college is the new assistant professor of home management and supervisor of the home management house. She replaced Miss Doris Hittle who returned to Iowa State at Ames.

Miss Doris Piper, who did graduate work at Purdue university, relieved Mrs. Troy Allen Lockard as instructor in applied arts during the fall semester. Miss Piper is now associate home economist with the national housing agency in Washington, D. C. Mr. and Mrs. Lockard are parents of a daughter, Linda Mary, born October 6.

Miss Lila Allred, instructor in clothing and textiles, and Dr. O. A. Kin-

chen, professor of history and anthropology, were married December 24 at the home of Misses Margaret W. Weeks and Mabel D. Erwin. Mrs. Kinchen received her B.S. and M.A. degrees in the Tech home economics division.

Miss Johnne Bowles, assistant professor of home economics education, will work for the State Department of Education in Austin the remainder of this school year. She will do extension work in school services and will assist in the nursery program which provides for the children of mothers who are doing defense work. Miss Doris Nesbitt of Iowa State college will replace Miss Bowles.

Mrs. Ernestine Story Carr is the new secretary to Miss Vivian Johnson, head of the home economics education department. Mrs. Carr replaced Miss Verna Crump who is now secretary to Miss Mozelle Craddock, head of institutional management and dietitian of the dormitories.

Mrs. Clifford Horn is the new secretary in the office of Dean Margaret W. Weeks, replacing Mrs. Anna Burt Gibson, who is now secretary to President Clifford B. Jones.

Juanita Rose is now instructor in clothing and weaving at the State School for the Blind at Austin.

Five graduates have entered W.P.A. project supervision this year. Pearl Felty is at Lubbock, Louise Hardy at Gatesville, Mary Frances Leach at Anson. Myra Naome Smith, now Mrs. Guy Austin, at Hereford, and Harriette Williford at Fairfield.

Home Economics Alumni Directory

- Abernathy, Agnes (Mrs. William Kenneth Hicks), 1323 24rd, Lubbock
- Adkins, Freddie (Mrs. A. E. Hammonds, Jr.), 1004 St. Mary's St., San Antonio
- Adkins, Wilma (Mrs. George Jones), Route 1, Friona
- Agee, Parri Dee, Third Officer, WAAFC, Ft. Des Moines, Iowa
- Akerman, Edith Elizabeth, Box 25, Abcon, N. J.
- Allredde, Mildred (Mrs. Hassler Strickland), c/o Security Board, Rust Bldg., San Angelo
- Allen, Helen Inez (Mrs. M. J. Williams), Shallowford, Waco
- Allen, Wanda Louise, Hale Center (awaiting call, WAAC)
- Allred, Lela (Mrs. Oscar A. Kinchen), H. E. Division, Texas Technological College, Lubbock
- Anderson, Margaret L. (Mrs. James W. Hodges, Jr.), Dietitian, Wm. Beaumont Hospital, El Paso
- Anderson, Velma (Mrs. Joe Matthews), Edges Apartments, Bryan
- Anglin, Floy (Mrs. Charles V. Nelms), Tahoka
- Archer, Viola Grace, Dickens
- Armstrong, Estelle Estelle (Mrs. Alvin Naylor) Muleshoe
- Armstrong, Nell (Mrs. Edwin B. Lauderdale), 415 MacDonald Rd., Oakdale Farms, Norfolk, Va.
- Ashley, Katherine (Mrs. R. C. Chambliss), Melrose, N. M.
- Atkinson, Almareen Maude, White Deer
- Bailey, Iris Isabelle (Mrs. John O'Neil), Houston
- Bailey, Jimmie (Mrs. Jim Wiman), 1307 Ave. D, N.W., Childress
- Bain, Jean, F.S.A., Midland
- Baker, Mary Lois (Mrs. Gurnell A. Baker), 216 W. Willingham, Cleburne
- Bair, Evelyn Meading (Mrs. William Ball), 521 South Madison Ave., Pasadena, Calif.
- Ballow, Charlotte, Robison Courts, Texarkana
- Barber, Drucilla Smith (Mrs. George Barber), 2401 14th St., Lubbock
- Barnett, Mrs. E. M. (Marguerite Cross), 2001 47th St., Lubbock
- Barnett, Mary (Mrs. Tex Pattillo), McCamey Barr, Virginia Lee (Mrs. Milton C. Adams), 2116 15th St., Lubbock
- Barrett, Florence Eunice (Mrs. Joe Ellis), 1201 E. Grand, Albuquerque, N. M.
- Barrow, Elmerine, Sweetwater Jr. High School, Sweetwater
- Barrow, Nadine, F.S.A., Graham
- Beard, Mary Gladys, Grand
- Beard, Gilda Pearl (Mrs. John Plache), Midland
- Beard, Stella Marie (Mrs. Jimmy Gaines), 1507A Le Brea, Inglewood, Calif.
- Beatty, Edna Fay, New Deal School, Rt. 6, Lubbock
- Beck, Laura Treva (Mrs. Burl Pligg), 403 Lancaster St., Monroe, N. C.
- Benge, Doris Louise (Mrs. John A. Rameur), 205 Avondale Ave., San Antonio
- Benn, Margaret Ann (Mrs. George B. Marshall), 529 W. Missouri, Floydada
- Benson, Bennett Curry (Mrs. Joseph W. Harter), 2410 22nd St., Lubbock
- Beran, Alvina Ruth, Station Hospital, Camp Wolters, Texas
- Berrier, Vivian Christine, Texas Dormitories, Lubbock
- Birkman, Margaret Ragdale (Mrs. R. L. Ragdale), 2423 Broadway, Lubbock
- Bishop, Carrie Lee Carruth, High School, Seagraves
- Black, Joyce Ivola (Mrs. Burt Milam), 1832 Clover St., San Antonio
- Blair, Sibil (Mrs. Marion Leftwich), Wilson
- Blanton, Ella Mae (Mrs. Victor Hudman), Post Blount, Billie (Mrs. Wilnot Eaton), 3023 21st St., Lubbock
- Booker, Eilene (Mrs. William H. Hincey), 1141 Chesnut St., Colorado
- Bowers, Fayrene (Mrs. J. J. Griggs), 22nd Armd. Engr., Ba. Camp Cook, Calif.
- Bowers, Allene (Mrs. Don L. Stanford), 1137 Alamosa Ave., Long Beach, Calif.
- Bowers, Marcellie, 2317 9th St., Lubbock
- Bowlin, Lucille (Mrs. Reese Masten), 811 N. Mainview
- Boyles, Rheba Merle, Navasota
- Bresler, Brooks Faye (Mrs. Maurice E. Barrett), Ft. Stockton
- Brown, Blanche (Mrs. Leroy Spang), c/o H. L. Brown, Clasco
- Brown, Ella M. (Mrs. J. E. Jones), Artesia, N. M.
- Brown, Jewel (Mrs. J. C. Chamberlain), Goose Creek
- Brown, Velma (Mrs. A. C. Henderson), Shallowford
- Bryan, Ruth Wilbanks (Mrs. Joe Dan Bryan), 3209 Cockrell, Ft. Worth
- Bryant, Hazel Louise (Mrs. William W. White), Rankin
- Buckanan, Beatrice, Air Corps Mechanics School, Amarillo
- Buckner, Anne May, Nursery School, Texas Tech, Lubbock
- Buckner, Hazel Ann Wilson (Mrs. Dale Buckner), 260 Southern Ave., Apt. 8, Capitol Heights, Md.
- Bullock, Lesley Lavenia (Mrs. Ernest Kinsel), 133 Madison Ave., Apt. 6, San Antonio
- Burleson, Iva, Frederickburg
- Burroughs, Arvela Bostick, c/o Tom Bostick, Oil-worthington
- Burrow, Fontella Ladonia, Dimmitt
- Bunta, Maxine (Mrs. M. K. Foster, Jr.), 900 Broadway, Plainview
- Burton, Dorothy Irene, Mobette
- Burton, Geraldine, Box 165, Childress
- Butler, Henri Ella, Sundown Schools, Sundown
- Byers, Alma, F.S.A., Dalhart
- Caffey, Mary Frances, Southland
- Camp, Lanell, Extension Service, Ellis County, Waxahatchie
- Cannon, Myriene, Box 631, Brownfield
- Carmichael, Lovett Mae (Mrs. H. D. White), c/o Mrs. Lillie Carmichael, Kenna, N. M.
- Carter, Mary Margaret, Nix Hospital, San Antonio
- Carter, Helen, Rust (Mrs. Frank D. Wilson), P. O. Box 1775, Amarillo
- Carter, Winola Christelle, Santo
- Casby, Evelyn Helen (Mrs. Robert Shipp, Jr.), Wolfboro
- Casey, Edwina, Extension Service, Comanche
- Cass, Comanche
- Chance, Juanita (Mrs. Elmer W. Moncrief), 509 Hollywood, Dallas
- Chapman, Emma, Veteran's Hospital, Salt Lake City, Utah
- Chenoweth, Elizabeth, c/o Superintendent of Schools, Orange
- Christman, Edna Lorena, Magdalena, N. M.
- Clark, Evaughn (Mrs. Jack M. Hackler), Abercrombie
- Claiborn, Willa Oleta (Mrs. F. J. Peterson), 2627 E. Admiral St., Tulsa, Okla.
- Cline, Betty (Mrs. Troy Mitchell), Rt. 2, Box 51-A, Arlington
- Clay, Sallie Jane, c/o Cleveland Clay, Box 96
- Clements, Lizzie Bell (Mrs. Clarence Whitesides), 2123 22nd St., Lubbock
- Cleland, Frances, 1749 Q St., N.W., Washington, D. C.
- Cleveland, Neweta (Mrs. Hyton B. Loyd), Hobbs, N. M.
- Clewell, Geraldine, Montana State College, Bozeman, Mont.
- Cobb, Helen (Mrs. Wm. H. Crutcher), 2023 Main St., Lubbock
- Cobb, Paula, Tulsa High School, Tulsa
- Coker, Nora (Mrs. Clyde Drake), 3306 Glenview, Austin
- Cogburn, Bonnie Faye, Claussen School, Levelland
- Cole, Oleta (Mrs. Don Officer), 2806 24th St., Lubbock
- Cole, Vada, 2nd Officer, 5th WAAC Training Center, Ruston, La.
- Collier, Catherine Virginia, Scott-White Hospital, Temple
- Collins, Anna Belle (Mrs. Ralph Collier), 2563 Stadium Drive, Fort Worth
- Collins, Marion Marie (Mrs. Charles C. Carner, Jr.), 120 Irene Ave., San Antonio
- Conley, Irene Holt (Mrs. John Conley), 1300-A West 18th, Amarillo
- Conrad, Wilma Jean (Mrs. William L. Boyd, Jr.), Hamlin
- Cook, Bonnie Lee (Mrs. Preston Lee), 911 Crane, Sweetwater
- Cook, Johnnie Olene, c/o Office of U.S.N. Resident Inspector of Naval Material, 501-517 Republic Bank Bldg., Dallas
- Cook, Kathryn, Sundown Schools, Sundown
- Cosden, Rosella Bonnie, Extension Service, Cherokee County, Rusk
- Cox, Sarah Louise (Mrs. J. E. Stewart), Strawn
- Copeland, Velma (Mrs. Morgan Pearce), Edna
- Kenzie Ave., San Angelo
- Couch, Imogene (Mrs. John E. Tatum), 1511 Lipscomb, Amarillo
- Couch, Mary Catherine (Mrs. Virgil James), 2nd Extension Service, Paris
- Cowan, Laura Ruth, Merkel
- Cox, Mrs. Geraldine Sides, 2311 7th St., Lubbock
- Copeland, Velma (Mrs. Morgan Pearce), Edna
- Cox, Louise, c/o Office of U.S.N. Resident Inspector of Naval Material, 3800 Commerce St., Dallas
- Crain, Mary Lou (Mrs. Nat B. King), Laredo
- Crawford, Mary Len (Mrs. Roy Buford Austin), Box 574, Childress
- Crawmore, Exile (Mrs. Clayburn Harrell), 201 East Park, San Antonio
- Cross, Lela Alyce (Mrs. G. H. Gray), 707 N.D. Street, Midland
- Crouch, Debbie (Mrs. Orval Lewis), 515 Hassett Ave., Fort Worth (Mrs. Jim Frank Potts), c/o Texas Highway Department, Elgin
- Davis, Ruby Dean (Mrs. A. B. Davis, Jr.), Oklahoma City, Okla.
- Deen, Neva (Mrs. Roe Bavousett), Dept of Foods and Nutrition, Texas Tech, Lubbock
- Diggs, Mary Eleanor (Mrs. Fayette McCollum), Ft. Stockton
- Dixon, Nancy Carolyn, Extension Service, Lynn County, Box 405, Tahoka
- Donnell, Bessie Faye (Mrs. Charles D. Marshall), Canyon
- Doss, Eleanor (Mrs. Lloyd Hahn), c/o Frank Doss, Bonham
- Doss, Elizabeth, 1013 Main St., Clarksville
- Dozier, Cleith, Box 43, Grady, N. Mex.
- Drake, Phyllis, Dept of Foods and Nutrition, Texas Tech, Lubbock
- Drazer, Mary Ann, Lamar College, Beaumont
- Duckworth, Donna D., Crosbyton High School, Crosbyton
- Duggan, Felsa, Dodson
- Duncan, Hazel (Mrs. Wayne G. Arnold), P. O. Box, Pecos
- Dunlop, Mared Ethyl (Mrs. Raymond Billingsley), New Deal School, Rt. 6, Lubbock
- Dunn, Louise Buckhalter (Mrs. Arthur Lee Dunn), 1302 E. 10th, Lubbock
- Eades, Alma Rhesa, c/o Mrs. M. V. Eades, Rt. 4, Lubbock
- Earhart, Mildred (Mrs. Harry Werner), 3320 Woodlawn Dr., Columbus, Georgia
- Eaton, Fannie Brown, Extension Service, Hockley County, Lubbock
- Edgett, Anne Pauline (Mrs. James Toothaker), 4590 Winona, San Diego, Calif.
- Edmondson, Mrs. Louise Baird, Brown Cottage
- Bosworth, Oakwood, Addition, College Station
- Eldson, Maude (Mrs. Harry Chosh), Stanton
- Elliand, Frances (Mrs. John W. Palmore, Jr.), Tulsa
- Elder, Marjorie (Mrs. William B. King), 435 W. Seattle St., Seattle, Wash.
- Elliott, Ann Beatrice, Lefors
- Elliott, Mary Elizabeth, Extension Service, Giddings
- Elliott, Nora Ellen (Mrs. Daniel Isom Dudley), Bryan
- Elliott, Olga Ann, Eunice, New Mexico
- Elliott, Zelma Estelle (Mrs. Claude D. Emmons), 60th Bu., Camp Wolters, Texas
- Ellison, Clara Lorene, Lawn
- Ellsworth, Annie M. (Mrs. J. O. Ellsworth), 2607 22nd St., Lubbock
- Fagala, Jean (Mrs. James Scott Blair), Dept of Public Welfare, Jennings, La.
- Fairley, Margaret Elizabeth (Mrs. Leldon Arthur Hudson), Dimmitt
- Feltz, Pearl, 2401 6th, Lubbock
- Felton, Jennie Faye (Mrs. Winfred Davis Holley), c/o College of Agriculture, University of New Hampshire, Durham, New Hampshire
- Ferguson, Frances (Mrs. Elmer Davenport), Balmorhea State Park, Ft. Davis, Texas
- Ferguson, Roberta, FSA, Junction
- Fincher, Gladys, Sunset
- Fisher, Thelma Grace (Mrs. Glenn Conrad Karlin), Box 452, Albuquerque, N. Mex.
- Flache, Marie Sue (Mrs. F. B. Parham), Brownfield
- Fleming, Marjorie, WAAFC, Ft. Des Moines, Iowa
- Flenniken, Lucille (Mrs. W. F. King), 110 1/2 Morgan Ave., Las Vegas, Nev.
- Ford, Charles, Box 699, Eagle Pass
- Ford, Roxana Ruth, Kingsville High School, Kingsville
- Foster, Edna Louise, Loop
- Frasier, Vada May, Alamogordo, N. Mex.
- Frey, Pauline Gordon (Mrs. Wayne Frey), 1117 E. Elmwood, Waco
- Gaines, Nanie Mae, 2315 14th, Lubbock
- Garrigues, Pauline (Mrs. Herschel Crawford), Stanton
- Garrison, Etola Marie, Petersburg
- Gary, Earnestine, Gruver
- Gathing, Edna Paula (Mrs. Phyllis Tay O'Tibberty), 1165 Portland Ave., Abilene
- Gearty, Lilla, Extension Service, Bailey County, Muleshoe
- Geyer, Bulle Dee Cox (Mrs. John P. Geyer), 2304 15th, Lubbock

Cholson, Elsie Irene (Mrs. Walter C. Hadley), Knott

Gill, Joyce Anita, Stanton

Gill, Lonnie Joe (Mrs. Herbert O. Stroud), c/o A. W. Gill, Miami, Fla.

Gleason, Dorothy (Mrs. W. D. Murray), 2152 Vogel Rd., Evansville, Ind.

Glenn, Floy (Mrs. Lawrence H. Sides), FSA, Big Spring

Gober, Frank Louise, c/o J. I. Gober, Farwell

Godfrey, Jane Katherine, c/o W. F. Godfrey, La.

Gollinar, Lorraine, Station Hospital, Camp Polk, La.

Gowdy, Lora Lee (Mrs. O. R. Turner), Box 3, Jacksboro

Graham, Mary Eunice, Olton

Granberry, Marjorie (Mrs. Roland Kaderli), 222 Park Lane Dr., San Antonio

Graves, Jean Camie, Hule

Graves, La Marie (Mrs. Harold Aken)

Gray, Ruby Lee, c/o V. P. Carter, Tahoka

Green, Barbara (Mrs. Willis Cooper), Roaring Springs

Green, Ethel (Mrs. Everett McArthur), Spur Green, Helen Ross (Mrs. L. B. Green) 605 W. 16th St., Austin

Green, Lorene, Extension Service, Quanah

Green, Mary, Fort Worth

Green, Stigla Mae (Mrs. Wallace Varley), White-harrel

Griffin, Irma Mae, Megarog

Griffith, Florence (Mrs. James H. Anthony), 3981 Louisiana St., San Diego, Calif.

Griffith, Wilma Dorine, Rock Springs

Grimes, Ruth (Mrs. Robert Wade), Rt. 2, Box 103, Mineral Wells

Gruver, Hazel (Mrs. Wilbur Pearson), 1701 27th, Lubbock

Gulleidge, Velda Beth, FSA, Colorado

Gunter, Mary Kathryn (Mrs. Morian McManis), c/o J. A. Gunter, Conway

Haberer, Elsie Dale, Meadow

Haffey, Jane Elizabeth, Logan, N. Mex.

Hall, Sara Nell (Mrs. Walter M. George), Di- vide School, Roscoe

Hamilton, Lorene Newsom (Mrs. James Ham- iltan), 822 Charles Rd., Ft. Sam Houston, Tex.

Hankins, Lila Mildred, 2143 19th, Lubbock

Harbin, Robin Lee, Paint Rock

Hard, Graham Elizabeth, Shallowater

Hard, Laura (Mrs. G. E. Clifton), FSA, Floyd- ada

Harding, Jane Dilworth Weakley (Mrs. Floyd- ward), Woodson

Hardy, Louise (Mrs. Paul Hardy), Gatesville

Hargrove, Pauline, Extension Service, Dallam County, Dalhart

Harmon, Katherine Klare, Cotton Center

Harris, Dorothy Gladys, 211 Forrest, Amarillo

Harvel, Jessie McLeroy (Mrs. J. L. Smith), c/o G. W. McLeroy, Pettit

Harvey, June Gladys (Mrs. Owen B. Harvey), 12 E. 3rd, La Junta, Colo.

Hasehoff, Dolores, 4025 Lakehurst, Dallas

Haskins, Geraldine (Mrs. J. C. Williamson), Midland

Hastings, Emma May Minor, Levelland

Havia, Ruby Maurine (Mrs. Elton Smith), North Orchard Lane, Stillwater, Okla.

Hawkins, Willie, Levelland

Hayden, Ruby Ethel (Mrs. John A. Parker), Casilla 9796, Santiago, Chile, South America

Hayhurst, LaVerne, FSA, Crosbyton

Hearell, Ruth Elizabeth (Mrs. Thomas W. Gid- den), Box 236, Waxahachie

Heath, Lottie Mae (Mrs. Rual Ford), FSA, Tu- lia

Heatley, Beatrice, Snyder Hall, Box 574, South- ern Methodist University, Dallas

Henby, Margaret (Mrs. Cyrus Parriss), 8142 Crandon Ave., Chicago, Ill.

Henderson, Alice (Mrs. Aubrey Willard), Box 275, Corpus Christi

Henslie, Christine Fincher (Mrs. Homer Henslee), 56-49 1st St., Flushing, L. I., New York

Hensley, Jessie Lee (Mrs. Bob Roney), 2620 Rosedale, Houston

Henson, Alice Audelia, Farwell

Henson, Maggie Lorene (Mrs. LeRoy B. Gaines), FSA, Memphis

Hervey, Margaret (Mrs. Harry S. Wilbur, Jr.), Canadian

Hightower, Billie Jean, Asst. Dietitian, Bar- racks No. 1, Texas Tech, Lubbock

Hill, Nell Marie, Denver City

Hipo, Jewell, Extension Service, Coleman

Hitt, Sammie Marie (Mrs. T. H. Stewart, Jr.), Clarendon

Hix, Julia Argen, Extension Service, Hemphill County, Canadian

Hochstein, Geraldine W. W. Hastings, Indian Hospital, Tahlequah, Okla.

Hodges, Eleanor (Mrs. H. B. Freeman), 700 Prospect, Amarillo

Hodges, Billie Edith, Catherine, Carey

Hodges, Orelia Lafayette (Mrs. John W. Den- ton), c/o U. S. Border Patrol, Fort Lauderdale, Florida

Hogg, Grace Mae (Mrs. Bert Mullen), Swenson

Holcomb, Hermione (Mrs. Charles Milton Cor- fey), Arlington Heights High School, Ft. Worth

Holland, Ruth, 1311 14th, Lubbock

Holliman, Inez Elizabeth (Mrs. Martin Lyle Dent), Rt. 3, Box 269, Amarillo

Holloway, Maretta Frank (Mrs. John Baumgard- ner), Registrar's Office, Texas Tech, Lubbock

Jennings, Margaret Jane Holloway (Mrs. Bruce Jennings), c/o J. W. Holloway, 1913 13th, Lub- bock

Hughes, Pauline (Mrs. J. G. Keyes), 2217 31st, Lubbock

Hooten, Maude Latham, Box 852, Stephenville

Hers, Christine, c/o Mrs. Olga Hopkins, By- ers

Howell, Doris (Mrs. Sol Davis), Post

Howell, Mabel (Mrs. Orland W. Smith), 1423 S. Monroe, San Angelo

Howell, Mary Loch, Cafeteria Hostess, Service Club No. 2, Ft. Texas

Huff, Elaine, 1909 Rio Grande, Austin

Hufaker, Chiole (Mrs. Peyton Reace), 805 W. 4th St., Austin

Hufstader, Auvema (Mrs. J. V. Morton), Level- land

Hughes, Irene Lovanna (Mrs. Harris), Wellin- ton High School, Wellington

Hughes, Loretta Juanita (Mrs. William T. By- rton), Spearman

Hunt, Lucille (Mrs. Triett B. Smith), Tahoka

Hurn, Mary Hazel (Mrs. Curtis Van Zandt), Tulsa

Hurt, Oneida Blanche (Mrs. S. R. Hutto), 1923 5th, Lubbock

Ivy, Lucy Moore (Mrs. John Ivy), Rt. 2, Haskell

Jackson, Lucille Ree (Mrs. George B. Cooper), Box 527, Carlsbad, N. Mex.

Jackson, Irene (Mrs. Doyle Osburn), Miami, Tex.

James, Lady Clara, Extension Service, Plains

Jennings, Evelyn, Toodlena, N. Mex.

Jennings, Virginia Ruth (Mrs. Edgar M. Alday), 704 University Ave. Georgetown

Jernigan, Martha (Mrs. Woodrow W. Carter), Burkburnett

Johnson, Dorothy (Mrs. Haskell G. Taylor), 1504 25th St., Lubbock

Johnson, Paula Mae, 1807 15th, Lubbock

Johnson, Mary Helen, FSA, Wellington

Johnston, Mary Frances (Mrs. Thomas Chessier), 1911B 22nd, Lubbock

Johnston, Robert Neil, Eskota

Jones, Blanche Marie, Westbrook

Jones, Mary Watson, FSA, Plainview

Jones, Veralee (Mrs. Presley Earl Ross), 1019 N. Milan, Seguin

Kemp, Faye (Mrs. James H. Holcomb), c/o Den- ton, Dallas

Kennedy, Ruby (Mrs. Amnerl Payne), 1030 S. Bishop Ave., Dallas

Kerr, Amy Rhonda, Allen, Army Hospital, Army Air Force Advanced Flying School, Big Spring

Kerr, Amy Rhonda, 2001 Ashland, Ft. Worth

Kerr, Amy Rhonda, 2001 Ashland, Ft. Worth

King, Rozelle, Highland School, Roscoe

Knight, Mary (Mrs. Marvin Harvey), Slaton

Kral, Edith R., Vernice Schools, Vernon

Kunkel, La Zette Leona (Mrs. Henry Yarbrough), Rustan, La.

Lam, Mrs. Geraldine Conner, 2408 23rd, Lub- bock

Lancaster, Letha Eloise (Mrs. F. Dayton Eck- ert), Slaton

Lansford, Frances Geraldine (Mrs. J. C. Wall- ing), Lamessa Public School, Lamessa

Larner, Frances Beard, Harbour-Longmire Co., Oklahoma City, Okla.

Leach, Mary Frances, Asst. Lunchroom Super- visor, WPA, Anson

Lee, Hazel (Mrs. Fred Kerr), Loreux

Ledigh, Katherine (Mrs. Henry Meredith), 317 S. Ogden, Denver, Colo.

Ledigh, Mary Elizabeth, Panhandle A&M Col- lege, Goodwell, Okla.

Lewis, Deslie Katherine (Mrs. Scott McCall), Shamrock

Lewis, Novis, 1716 Thomas Place, Fort Worth

Lindley, Mrs. Finis Cook, Dublin

Link, Ruth, Jourdanston

Linn, Dollie Mae (Mrs. D. A. Banta), c/o Den- ton, 2413 14th, Lubbock

Lockwood, Daisy (Mrs. Walter Wood), White- face

Loughridge, Catherine B., Dietitian, Internal Medicine Bldg., Washington

Loyd, Doris (Mrs. Dub Hair), 1018C So. Fill- more, Amarillo

Loyd, Lucille (Mrs. Winston Bley), Sacramento

Lytle, Elsie Mae, Texas Tech College, Lubbock

Lytle, Helen (Mrs. Wayne Waters), Worth

Lytle, Dornie, Texas Tech

Lytle, Ovel (Mrs. Arnold Bink), 16304 W. 79th St., Los Angeles, Calif.

Macdama, Mary Leda (Mrs. W. L. Cooper), 222 6th St., Rochester, Minn.

McAllister, Inez (Mrs. Tom Amos), Des Moines, Iowa

McCall, Roberta, Robinson Independent School, Lorenzo

McCarthy, Dora Nell (Mrs. Simon Edward Car- roll), 1805 W. 10th, Dallas

McCarthy, Pauline (Mrs. G. W. Russell), Denver City Public Schools, Denver City

McClain, Mrs. H. D. King), Muleshoe

McClellan, Orene, Asst. Home Dem. Agent, Dal- las County, Dallas

McCollum, Mrs. E. J. Spearman

McCollum, Mrs. Billie Sudether, Box 233, Hobbs, N. Mex.

McConnon, Helen Louise (Mrs. Frank R. Crow), Plainview

McCouston, Dorothy Canzanda (Mrs. Frank C. Jensen), Apt. 1, 2700 Q St., S. E., Washing- ton, D. C.

McDonald, Austine Cora (Mrs. Morris A. Hill), 1015 S. Keith, Oklahoma City, Okla.

McElroy, Vera Copeland (Mrs. Holt), Sugar- McGee, Jean (Mrs. Birt R. Brumby), Box 322, Harrisburg, Illinois

McGregor, Edna Earl, Alpine

McKnight, Willie Murel Bevers, Lakeview

McWhirter, Laverne, Box 235, State College, Tex.

McWhorter, Alva Clair (Mrs. Gordon P. Cough- lin), 2219 Games St., Dallas

McWilliams, Pauline Alice, County Home Dem- onstration Agent, Hudspeth County

Macha, Georgia, Eola

Machar, Marie, Eola

Magee, Ruth, FSA, Lamesa

Maggard, Mable Leslie (Mrs. Don Richardson), 1615 S. 17th, Muskogee, Okla.

Malcolm, Golda (Mrs. J. P. Blackstock), Brown- field

Mallard, Dellah Isabelle (Mrs. Cason E. Sprad- ley), Rt. 8, Lake Worth, Fort Worth

Marshall, Louester Higdon (Mrs. Carl Marshall), 1615 S. 17th, East Vaughn, N. M.

Martin, Dorothy McCarter (Mrs. Charles D. Mar- tin), c/o R. A. McCarter, 1429 W. Collin, Cor- nelius

Martin, Lula Mae (Mrs. Wolfe), Jacksboro

Martin, Mrs. Pharene Vinzant, Rt. C, Lamesa

Mastin, Mary (Mrs. Thomas J. Northern)

Masten, Edith Maryetta (Mrs. H. B. Waits), 1459 Fillmore, Denver, Colo.

Mathews, Melba Thelma (Mrs. Homer G. Maxey), 2206 21st, Lubbock

Maxwell, Mrs. Faye Hurstfield, 610 Mesita, El Paso

May, Annetta, Blackwell

May, Edna Florene, McAdoo

May, Gladys, 2001 Ashland, Ft. Worth

Middleton, Guida, 1604 Ave. Y, Lubbock

Milburn, Wilma Faye (Mrs. Harold Gaines), Rt. 2, Amarillo

Millard, Virginia (Mrs. A. M. Hall), c/o Ma- gnoolia Petroleum Co., 414 N. Union, Opelousas, La.

Miller, Annie Faye (Mrs. J. Wendell Watson), 2005 Wilson St., Wichita Falls

Miller, Johnnie (Mrs. J. L. Smith), 2105 14th St., Lubbock

Mitchell, Gladys Hall (Mrs. Russell Mitchell), Box 218, Levelland

Montgomery, Emily Lois (Mrs. Travis Mason), 1005 W. 10th, Dallas

Moore, Coy Hazel (Mrs. Sam M. Brown), 1915 Main, Lubbock

Moore, Ethel (Mrs. Warren D. Smith), O'Donnell

Moorehead, Mrs. Winona Price (Mrs. Robert Moorhead), Estelline

Morris, Nanetta Pauline, WAVES Training Di- vision, Hunter College, New York City

Morrison, Sue (Mrs. Edward W. Brown), Rt. 1, Abernathy

Mounts, Hattie (Mrs. C. L. Haise), 419 N. 15th, Muskogee, Okla.

Mounis, Maetta (Mrs. Ivan H. Smith), Box 1052, Tacoma, Wash.

Mueller, Jewell Jennings, Box 20, Levelland

Murray, Virginia (Mrs. Oliver Orr Lewis), Hobbs, N. Mex.

Nachinger, Viola (Mrs. Howard Gracey), c/o Joe Nachinger, Hermleberg

Neely, Elva Lucille (Mrs. Jack D. Glasco), 134 Arlington Ct., San Antonio

Nelson, Willena (Mrs. George Dupree), 26 North Bend, Pawtucket, R. I.

Newsom, Mrs. Eva May (Mrs. Garland New- som), 2025 22nd, Lubbock

Nix, Ganle (Mrs. R. A. Burford), 2108 18th, Lubbock

Nunes, Almarine, Goree

Ohlenbusch, Louise, Portales Junior High School, Portales, N. Mex.

Oliver, Virginia (Mrs. E. F. Barber), c/o Union Produce, Beville

Parranore, Pearl Stone (Mrs. Ralph Parra- more), Box 2151, Amarillo

Parris, Bernice (Mrs. Doyle E. Wiginton), Ita- sca

Parris, Ursula (Mrs. Wilburn George), 1313 N. - Diverside Dr., Ft. Worth

Partin, Elsie Pendleton (Mrs. J. W. Partin, Jr.), 1513 Willow, San Angelo
 Patten, Evelyn, Student Dietitian, Walter Reed Hospital, Delano Hall, Washington, D. C.
 Payne, Ruth Marie (Mrs. Milton Roelofs), 2517 28th, Lubbock
 Pearson, Myrtle Lora, Perryton
 Peden, Hazel Ruth (Mrs. Perry W. Walker), Loveland
 Peek, Bessie Lee Ford (Mrs. Argo Peak), 1907 14th, Lubbock
 Perdue, Vera, Graham
 Phipps, Hazel, Extension Service, Texas A&M College, College Station
 Pierce, Gladys Evelyn, FSA, Cameron
 Plowman, Feroi (Mrs. Earl Tompkins), c/o H. W. Plowman, Baird
 Plowman, Annie Evelyn (Mrs. Claude Francis), 921 South Oak Cliff Blvd., Dallas
 Polk, Netta, Anton
 Poole, Gertrude (Mrs. O'Brien Thompson), 2900 So. Polk St., Amarillo
 Powell, Carolyn (Mrs. William Lee Benner), Simonton
 Powell, Frances D. (Mrs. Joe S. Dawe), Box 214, Clyde
 Pratt, Mildred Kathleen, Whitehall
 Price, Hazel Willie (Mrs. E. C. Fitts), Nacoma
 Price, Martha Ann (Mrs. Vester Lee Smith), Loveland
 Price, Mary Elizabeth (Mrs. Robert Gray Patterson), Pampa
 Price, Orvalene (Mrs. John C. Rhader), 605 1st St., Orange
 Priebe, Helen Margaret, Lubbock General Hospital, Lubbock
 Puetz, Anna Pearl, 1010 Maryland Ave., N. E. Washington, D. C.
 Pulley, Elsie, 909 W. 14th, Cisco
 Ragle, Eleanor (Mrs. Ruth Huddleston), Lamesa
 Rampey, Leota Irene, Silverton
 Randerson, Rose Marie (Mrs. M. C. Baumgardner), 2401B, 7th St., Lubbock
 Ratliff, Corene (Mrs. Ewald Lamprecht), 2114 31st, Lubbock
 Reed, Leota Mae (Mrs. E. L. Reed), Dietitian, St. Luke's Hospital, Pasadena, Calif.
 Reel, Delaine (Mrs. W. Norton), 516 College, Fort Worth
 Reinhold, Claudia, Lamesa
 Reinhold, Shirley Virginia, Dalhart
 Repass, Mary Lee (Mrs. Allard Vandevoort), Wellington
 Reynolds, Helenore (Mrs. Rollin T. Herald), Grand Prairie
 Reynolds, Mary Katherine (Mrs. George C. Duncan), Office the Quartermaster, DMCO, Ft. Huachuca, Arizona
 Rice, Lucile (Mrs. Edward Getchell), Laketon
 Ricks, Irma Dora (Mrs. James R. Hiale), Maxwell Field, Montgomery, Ala.
 Ridley, Marjory (Mrs. C. Howard Wilmonen), 201 Churchill, Fort Worth
 Riggins, Leola, 2911 Pershing Dr., El Paso
 Rippy, Max Tom Howell (Mrs. Jimmy Rippy), 2319 Maxwell St., Cheyenne, Wyo.
 Roach, LaVerne, Cafeteria Dietitian, Federal Reserve Bank, Dallas
 Roach, Pauline (Mrs. Will J. Harris), Gruver
 Roberson, Nena, Extension Service, Denton
 Roberts, Julia Grace (Mrs. Anthony Ott Frederick Deufel), Allred
 Robertson, Lillian (Mrs. Alvin Robinson), Box 1840, San Angelo
 Robertson, Virginia Ruth, New Home High School, Tahoka
 Rodgers, Lillie Gay (Mrs. J. T. Gee), Friona
 Rodgers, Wilma Ave. (Mrs. W. B. Keeney, Jr.), Box 858, Wickenburg, Arizona
 Rogers, Loretta Faye (Mrs. Buford Brown), Frisco
 Rogers, Pauline, Idalou
 Rogers, Vesta Grace, 4123 New Hampshire Ave., N. W. Washington, D. C.
 Rohrer, Helen (Mrs. Lloyd Hinkle), Weatherford
 Rooney, Elma Rose (Mrs. Mike Allen Barrett), Lamesa
 Rorex, Alice (Mrs. Joe Waldhofer), Bellevue
 Ruff, Taft, Calif.
 Rose, Juanita Carl, State School of the Blind, Austin
 Rose, Jessie Mae (Mrs. Orba Watson), FSA, Silverton
 Rose, Lucile (Mrs. Robert Macken), Wilson
 Rose, Minnie Katherine (Mrs. B. C. Spratt), Ralls
 Rucker, Alice Elizabeth (Mrs. Howard Allen), 404 E. Lawn Ave., St. Louis, Mo.
 Rushing, Lila Belle (Mrs. E. C. Moreman), 2421 19th, Lubbock
 Rushing, Roberta (Mrs. Wayne Holland), 2206 N. Albemarle St., Arlington, Va.
 Sanders, Gladys (Mrs. J. D. Williams, Jr.), Colorado
 Samson, Gertrude, Dietitian, TCU, Ft. Worth
 Sanders, Norma West, Wink
 Sanson, Marian (Mrs. Lloyd Russell), 3702 Utah Ave., Brentwood, Maryland
 Savage, Betty Jo, Third Officer, WAAC, Fort Des Moines, Iowa

Sawyer, Christova (Mrs. William Stillman Stitt), Box 474, Miami Springs, Florida
 Schaefer, Pearl Mildred, Knox City
 Schott, Elizabeth, Taft
 Self, Mary Frances, Crowell
 Seligson, Marie, Tutwiler Dining Hall, University of Alabama, Tuscaloosa, Ala.
 Senter, Ruth (Mrs. Arvie Elliott), Montague
 Shaffer, Valoris (Mrs. Ernest F. Osborn), Frisco
 Sharp, Winnolee Elizabeth, c/o F. H. Sharp, Rt. 2, Vernon
 Sheats, Kathryn Josephine (Mrs. Murray Oliver Johnson), Lollita
 Sheehan, Lois (Mrs. Walter Thompson), Childress, Box 335
 Shepard, Estelle (Mrs. S. M. Lytal), 2308 14th, Lubbock
 Shepard, Janie Ruth (Mrs. H. M. Bell), 2840 So. Adams, Fort Worth
 Shepard, Juanita Maxine, 506 Ave. G, S. E. Shields, Doris Kathleen (Mrs. Lloyd S. Reeves), c/o Police Dept., Dallas
 Shimotsu, Dorothy Yuki (Mrs. George Nagal), Alameda
 Shipp, Hilda Bernice, Motor Rt. B, Lamesa
 Shook, Mary (Mrs. L. P. Purvis), 601 E. Ave. D, Sweetwater
 Shuttlesworth, Anna Jewell (Mrs. B. G. Gibson), 421 Elm St., Racine, Wis.
 Sides, Mary Leola Cox (Mrs. Roy Sides), Extension Service, Athens, Ala.
 Smith, Lela Jean (Mrs. H. McKinley County Health Dept., Gallup, N. Mex.
 Slaughter, Joanne Cox (Mrs. C. W. Slaughter), Rt. 2, West Bond, St. Denison
 Smallin, Clela Belle (Mrs. Chester Gilmore), Idalou
 Smeal, Effie (Mrs. Truett Brooks), NYA Administration, Austin
 Smith, Eather (Mrs. Lynn Lemon), 1312 Kokonut, Houston
 Smith, Fern Allene, Big Spring
 Smith, Georgia Mae, C&P Telephone Co., Wash. D. C.
 Smith, Lola Jean (Mrs. Bill Hams), 322 Rosbud Ave., Corpus Christi
 Smith, Myra Naomi (Mrs. Guy Austin), Hereford
 Smith, Mildred Lee (Mrs. V. W. Crump), Rt. 5, Lubbock
 Smith, Ruth (Mrs. Norman Randall), Andrews
 Snelson, Ethel Mae (Mrs. Bob Cain), c/o J. C. Kenney Co., Plainview
 Song, Anna Larkun (Mrs. Jung W. Park), 133-Dal Chai Li, Pyeng Yang, Korea
 Soules, Georgia Lee (Mrs. Frank C. Fenfara), Rt. 2, Box 844, Charlotte, N. C.
 Spann, Doris Leah, WAAC, Third Officer, Spokane, Wash.
 Spaulding, Lela, Junior High School, Pampa
 Spear, Velma Dean, Patton Springs School, Arton
 Speer, Anibal Lee (Mrs. Lavoy Hooker), Rt. 4, Fort Worth
 Spencer, Noma Jean, Student Dietitian, Grassland Hospital, Valhalla, N. Y.
 Spikes, Wilda (Mrs. James M. Cagle), Floydada
 Spikes, Wilma (Mrs. Paul E. Wheeler), Snyder
 Spraggins, Lois (Mrs. W. H. Bullock), Artesia, N. M.
 Stanford, Steele Roberta, Air Corps Mechanics School, Amarillo
 Sterrett, Elizabeth Addae, Tucumcari, N. M.
 Story, Ernestine (Mrs. Waggoner Carr), Dept. of Education, E. Tex. Tech, Lubbock
 Stovall, Viola May, Roaring Springs
 Strawn, Dora (Mrs. Olen W. Yandell), c/o J. M. Strawn, Lamesa
 Strickland, Myra (Mrs. Gordon Burnett McFarland), 6909 Golf Drive, Dallas
 Strickland, Mayvis (Mrs. Leo C. Trimm), 802 Parkland Ave., Martineville, Va.
 Stuart, Belle, Ballenger
 Stuart, Isabel, Hockaby
 Svegston, Wynne, F.S.A., Amarillo
 Tanner, Mabel George, Old Glory School, Old Glory
 Taylor, Lucille, Dietitian, Dallas Public Schools, Dallas
 Teague, Joyce (Mrs. Gene Kistler, Tatum, N. M.
 Temple, Minnie St., Lubbock
 Terrell, Addie Lee (Mrs. Joe Christian), 2407 13th St., Lubbock
 Terrell, Mary (Mrs. Maynard Knight), 923 Ave. C, Galveston
 Thomas, Mary Louise (Mrs. R. M. Thompson), Dalhart
 Thompson, Juanita Fay (Mrs. Ed D. Allen), Box 1, Cleburne
 Thompson, Ruth (Mrs. L. M. Hargrave), Wolf-
 thorpe, Ruth, Farwell
 Townley, Weta Lou (Mrs. Milford Allen), 174th Btry. A, Camp Bowie

Townsend, Doris (Mrs. E. L. Harrod), 843 W. Foster, Pampa
 Treadway, Mozelle (Mrs. James W. Fitzgerald), Brownfield
 Turner, Marion Corinne, Box 1856, Midland
 Turner, Mary Edna, 830 Mulberry St., Abilene
 Tyne, Nina Fannie, Grade School, Dallas
 Underwood, Margaret Elizabeth (Mrs. Arthur Fisher), Route 10, Box 399, Phoenix, Ariz.
 Vanno, Jodelle (Mrs. J. E. Bog-Scott), Cresson
 Vernon, Mary Etta, 1602 8th St., Orange
 Wagner, Mildred Josephine, Home Economics Tea Room, University of Texas, Austin
 Walker, Eunice (Mrs. C. C. Perryman), 2320 8th St., Lubbock
 Walker, Mrs. Neil H., c/o Mrs. Cuxa Higginbotham, Rt. 2, Chillicothe
 Ward, Winnelle, William H. Nelle, 2445 Derby St., Berkeley, Calif.
 Warnock, Lovie (Mrs. E. D. Thompson), c/o A. M. Warnock, Pt. Stockton
 Warren, Lillie Hatchett, Whitehall
 Warren, Wynfred (Mrs. Robert L. Tate), c/o Fred Warren, 2433 19th St., Lubbock
 Weatherford, Helen (Mrs. C. J. Palmo), Wilmington, Calif.
 Webb, Nina Rose, Junior High School, Roswell, N. M.
 Weddle, Clara Frances (Mrs. James Young), 403 W. 10th St., Rola, Mo.
 Weddle, Laura Earline, New Madrid, Mo.
 Weil, Louise (Mrs. Leo V. Witkowski), Plainview
 Weinhold, Frances (Mrs. James H. Robbins), Canadian
 West, Alette (Mrs. Colin MacDonald), Box 549-D, Tacoma, Wash.
 Westbrook, Verma Emma, Pylon Public Schools, Pylon
 Wharton, Leona H. (Mrs. Orvel F. Mathews), c/o E. A. Wharton, 2301 10th St., Lubbock
 White, Helen Mae (Mrs. Travis Jones), Littlefield
 White, Lillie (Mrs. James E. Hale), Granbury
 Wilbanks, Mary Glee (Mrs. Calvin Hazlewood), c/o Vandervort's Creamery, Fort Worth
 Wilke, Eloise (Mrs. Paul Walter), Rt. 3, Lubbock
 Williams, Merle (Mrs. James Edward Pittman), Bernier Clinic, Second National Bank Building, Houston
 Williams, Nancy Margaret, c/o Dr. C. W. Williams, Sylvester
 Williamson, Ruth (Mrs. Vernon Sublett), Claude High School, Claude
 Willford, Harriette M., Asst. Dietitian, St. Luke Hosp., Pampa
 Wilman, Kathleen (Mrs. K. P. Green), 2711 Southeast 59th Ave., Portland, Ore.
 Willis, Helen (Mrs. William B. Douglas), 1114 Center St., Little Rock, Ark.
 Wilson, Frances Ray Pitta, Plainview
 Wilson, Herietta (Mrs. Fred Ford), 1102 Ave. N., Lubbock
 Wilson, Mrs. Laurette Ayers, Estancia, N. M.
 Wilson, Mary, c/o Smylie C. Wilson, 1615 10th St., Lubbock
 Wiman, Ruth, Ira
 Winstead, Helen (Mrs. Harris Harwell), Box 871, Vernon
 Winston, Mrs. Stella, Spur
 Wolf, Elsie, Dept. of Home Economics, Texas A&I College, Kingsville
 Wolf, Mina Marie (Mrs. Arch Lamb), Division of Home Economics, Texas Tech, Lubbock
 Wolskoff, Mrs. Eula Roper, Baird
 Womack, Marie (Mrs. Dewitt R. Reid), Lubbock
 Worley, Evelyn (Mrs. Arthur E. Duff, Jr.), 811 26th, Snyder
 Wright, Lucille, Tahoka Public Schools, Tahoka
 Wright, Louis (Mrs. Kenneth E. Pharr), 1502 Ave. N, Lubbock
 Wright, Nina (Mrs. John G. Shipp), c/o A. C. Wright, Shaloburn, Pa.
 Yarbrough, Sara Marie (Mrs. William Vaden Coventry), 803 E. Ave. A, Temple
 Yeager, Mary Bule, Box 574, SMU, Dallas
 Yeager, Pauline (Mrs. Aubrey Edwards), 2609 21st, Lubbock
 Young, Mrs. N. N. Hibun, Whiteface
 Young, Treva Mae (Mrs. Maurice S. Lloyd), 704 Albany, Pueblo, Colo.
 GRADUATES DECEASED
 Hanush, Helen E.
 Po, Gladys Marie
 Wren, Lois Valera

New N.Y.A. supervisors and teachers from Tech are Mrs. George B. Marshall, the former Margaret Ann Benn, who is at Floydada; Leota Riggins, who is in El Paso; and Mrs. Walter Thompson, formerly Lois Sheehan, who is at Childress. Mrs. Truett Brook, the former Effie Smith, is State Supervisor of Girls' Activities NYA, at Austin.



Supervised Play Makes Up A Part Of Nursery School Program

Nursery School Research Being Conducted By Dr. B. C. Ling

Research in the psycho-physical development of the pre-school child is being done this year by Dr. B. C. Ling, research fellow in the department of child development and family relations, and Dr. Mina Wolf Lamb, assistant professor of foods and nutrition. Eight children from the Tech nursery school are regular subjects for this six months research which began in October. It consists of 14 parts.

Dr. Lamb, assisted by Phyllis Drake, graduate, and Reuby Tom Rhodes, senior, gave the subjects energy metabolism tests as soon as the children had been duly trained by Dr. Ling and her assistants in a pre-energy metabolism conditioning experiment.

Dr. Lamb analyzed records kept of the diets of the children, taken over one-week periods out of each three months.

Anthropometric measurements of 16 children were taken by Dr. Ling with the assistance of Miss Rhodes.

Dental examinations of the children have been conducted by Dr. G. C. Turner, Lubbock dentist, once at the beginning and again at the close of the research period.

X-rays of the children's wrists were made once each three months by Dr. R. L. Dolecek, professor of physics at Tech, and analyzed by Dr. Ling for ossification and calcification of the bone development of the children.

Pediatric examinations were given by Dr. M. C. Overton, child specialist, twice.

To determine the mental capacities

of the children, problem solving experiments, the Standard Revision of the Binet intelligence tests, and the Gesell developmental tests were given the children by Dr. Ling, assisted by Ouida Johnston, senior home economics student, and Miss Rhodes.

Case histories of the subjects were taken by Dr. Ling to determine their hereditary and environmental backgrounds.

Reaction of the children to a stranger under controlled conditions was tested by Dr. Ling, in collaboration with Mrs. Neva Dean Bavousett, and assisted by Miss Rhodes.

Records of affective concomitant during food intake were made by Dr. Ling.

Sleeping records, including amount and quality of sleep, were kept for the research by the children's parents.

Research results which will include general physiological and mental developments, as well as nutritional status of the nursery school children, will be published in monograph form by Tech press in July.

Miss Winnie Temple, dietitian of Lubbock General hospital and graduate in dietetics, leaves April 1 to accept a lieutenant's commission in the United States Army as hospital dietitian. She has not yet received notice of where she will be stationed.

Bernice Parris and Doyle E. Wiginton were married December 4. She is at Itasca, and he at Camp Cooke, Calif.

Laverne McWhirter is research assistant at Mississippi State College.

Honorary Fraternity Will Initiate New Members

Phi Upsilon Omicron, national home economics fraternity, will hold its initiation service for new members March 27 in the Home Economics building.

Under direction of the local Red Cross, Phi U is now sponsoring the making of 2400 surgical masks. Two afternoons and one night a week are devoted to this work, with members acting as monitors in teaching other girls on the campus. Phi U and the Home Economics club are also responsible for the teaching of a home nursing course, which began March 1. The two classes will continue for six weeks.

Instead of the usual Founder's Day dinner, Phi U members were entertained with a tea at the home of Misses Margaret W. Weeks and Mabel D. Erwin, the night of February 10. Miss Frances Urban, a member of Rho chapter and professor of home management, gave the history of the national chapter. Miss Erwin gave the history of the local chapter.

Phi U members made 126 1-2 pounds of fruit cake as their December money-raising project. All orders could not be filled due to the shortage of ingredients and limited time.

Twelve pledges were initiated into Phi U in a sunrise ceremony Sunday morning, October 25. Initiates of the organization are An Alexander, Viola Archer, Jean McLaughlin, Ira Patterson, Reuby Tom Rhodes, Jo Bess Goodloe, Clara Mueller, Mary Lou Hinson, Dorothy McCarter, Eula Mae Watson, Margaret Asher, and Helen Wiseman.

Roxana Ruth Ford, who received her M. S. at Tech in 1940, is now a supervisory teacher at Kingsville.

Ilse Wolf is head teacher trainer at Texas A.&I. College at Kingsville.

Quality Merchandise

Reasonable Prices

Sixth Street
Grocery

V. A. Cross 1812 16th



Colorful

PRINTS

Feature Prices on the
Fabrics You Will Need

The task and responsibility of you homemakers is now greater than it has ever been. One of the ways in which you can help yourself and your country is to sew.... Sew for yourself... get better fit and greater individuality... Sew for your family... for better quality and greater economy. Sew for your country... to conserve machines and labor. Sew for the fun and satisfaction of creating things with your own hands. Come in and see the wealth of new materials and ideas we have in store for you.



Pastel Plaids, All Wool

\$3.95 yd.

Silk Jersey Prints, 54 in.

\$2.95 yd.

Silk Shantung Prints

\$1.00 yd.



Rayon Prints, Crown Tested

\$.79 yd.

Peter Pan Pique

\$.69 yd.

Beach Club Seersucker

\$.59 yd.

Daisy Crip Muslin Prints

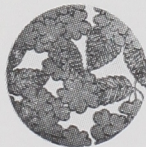
\$.59 yd.

Woven Dotted Swiss

\$.69 yd.

Solid and Stripe Chambray

\$.39 yd.



Simplicity
4529

Stephens
"YOUR DEPARTMENT STORE"

Now DUNLAP'S



Simplicity
4541



TROUBLE FOR TOJO! It's the new Curtiss "Helldiver," the Navy's latest dive-bomber, designed to carry a bigger bomb-load than any naval dive-bomber in existence. At the controls in this test dive, photographed above, is Barton T. Hulse, who learned his flying in the Navy... smokes the Navy man's favorite—Camel.

THEY can look terrific on paper... meet the most exacting laboratory tests on the ground. But the final proving ground of an airplane is in the air... when you fly it.

It's the same with cigarettes. The final test of any brand is in the smoking.

Test pilot "Red" Hulse and countless other smokers could tell you convincing things about Camels and their remarkable freedom from irritating qualities, but your own throat and your own taste can tell you even more convincingly why Camels are such a favorite on the front line—on the home front.

"There's just one cigarette for me—CAMEL—they suit my throat and my taste to a 'T'"

says

"RED" HULSE

VETERAN NAVY FIGHTER PILOT AND CHIEF TEST PILOT
OF THE NAVY'S
NEW CURTISS
DIVE-BOMBER



Camel

FIRST IN THE SERVICE

The favorite cigarette with men in the Army, Navy, Marines, and Coast Guard is Camel. (Based on actual sales records in Post Exchanges, Sales Commissaries, Ship's Service Stores, Ship's Stores, and Canteens.)



THE **T** ZONE



—where cigarettes are judged

The "T-ZONE"—Taste and Throat—is the proving ground for cigarettes. Only your taste and throat can decide which cigarette tastes best to you... and how it affects your throat. For your taste and throat are individual to you. Based on the experience of millions of smokers, we believe Camels will suit your "T-ZONE" to a "T."