

TEXAS TECH UNIVERSITY 1970-1971

Salute to TECH



B. Reynolds

THE ASSOCIATION OF WOMEN STUDENTS,
WOMEN'S RESIDENCE ASSOCIATION,
AND UNIVERSITY PANHELLENIC ASSOCIATION

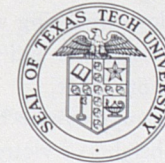
of

TEXAS TECH UNIVERSITY

present

TECH TIPS

A Handbook for Women Students
1970-1971



Editor Anita Bell
Cover Design Barbara Reynolds

CHAIRMEN

Residence Halls Becky Burnett
Panhellenic Lynn Kirkpatrick

School Songs

Fight Song

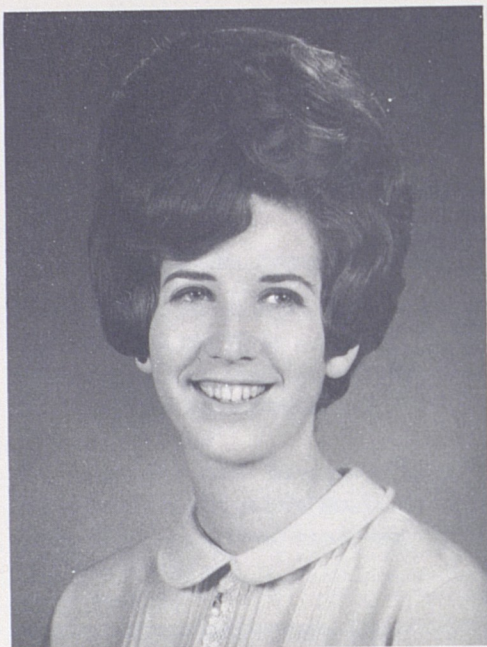
Fight, Raiders, Fight! Fight, Raiders, Fight!
 Fight for the school we love so dearly!
 You'll hit 'em high, you'll hit 'em low,
 You'll push the ball across the goal.
 Tech, fight! Fight!
 We'll praise your name, boost you to fame,
 Fight for the Scarlet and the Black.
 You will hit 'em, you will wreck 'em!
 Hit 'em! Wreck 'em!
 Texas Tech,
 And the Victory Bells will ring out—

Matador Song

Fight, Matadors, for Tech!
 Songs of love we'll sing to thee.
 Bear our banners far and wide.
 Ever to be our pride.
 Fearless champions ever be.
 Stand on heights of victory.
 Strive for honor evermore.
 Long live the Matadors.

Contents

DIRECTOR OF STUDENT ACTIVITIES	4
STUDENT LIFE ADVISOR FOR WOMEN	5
ASSOCIATION OF WOMEN STUDENTS	6
Women's Creed	7
AWS Executive Council	8
AWS and You	9
President's Hostesses	12
Angel Flight	13
CorpsDettes	14
Campus Girl Scouts of Texas Tech	15
Major-Minor Club	16
Women's Service Organization	17
STUDENT ASSOCIATION	18
Student Association	19
Freshman Council	20
WOMEN'S RESIDENCE HALLS	21
Women's Residence Council	22
A Guide to Residence Hall Living	24
Chitwood Hall	27
Clement Hall	28
Coleman Hall	29
Doak Hall	30
Gates Hall	31
Horn Hall	32
Hulen Hall	33
Knapp Hall	34
Stangel Hall	35
Wall Hall	36
Weeks Hall	37
HONORARIES	38
Alpha Lambda Delta	39
Junior Council	39
Mortar Board	40
Delta Psi Kappa	40
Mu Phi Epsilon	41
Phi Gamma Nu	41
Phi Upsilon Omicron	42
Tau Beta Sigma	42
UNIVERSITY PANHELLENIC	43
The Panhellenic Creed	44
An Introduction to University Panhellenic	45
What is Panhellenic?	46
Rush Registration Instruction	53
Alpha Chi Omega	55
Alpha Delta Pi	56
Alpha Phi	57
Chi Omega	58
Delta Delta Delta	59
Delta Gamma	60
Gamma Phi Beta	61
Kappa Alpha Theta	62
Kappa Kappa Gamma	63
Phi Mu	64
Pi Beta Phi	65
Sigma Kappa	66
Zeta Tau Alpha	67
APPENDIX	68
Constitution of AWS	68
Constitution of the Residence Hall Association and the Women's Residence Council	69
Landmarks and Traditions of Texas Tech	72



Carola Joan Mobberley, Director of Student Activities, Panhellenic Advisor

Hello! and Welcome to Texas Tech! You are about to begin what can be the most wonderful years of your life, and we are proud that you have chosen Texas Tech in which to do so. A college education is one of the most valuable assets you will possess. The friendships you make during the next four years will continue long after graduation. Texas Tech offers a variety of activities and organizations, including thirteen fine national sororities, in which one may fully develop her leadership abilities and interests.

"If a thing is not worth working for, chances are it isn't worth having. If a thing isn't worth asking for, it isn't worth taking. And if it is given to you, it isn't worth keeping." Start now—make the most of your college experience.

Sincerely,
Carola Joan Mobberley
Director of Student Activities
Panhellenic Advisor
AWS Sponsor



Mrs. Ruth Causey, Student Life Advisor for Women

I am delighted on the part of Texas Tech to have this opportunity to welcome freshman, transfer, and returning Texas Techsans to our University. It is my sincere hope that this year, 1970-1971, will be successful and happy.

Your residence hall counselor and the Student Life staff are here to help you in any phase of your college career. Remember what you put into your college career determines what you will profit from it.

Sincerely,
Mrs. Ruth Causey
Student Life Advisor for Women

AWS



Women's Creed

I believe in the women of this university, in their ideals and sincerity of purpose.

I believe in my ability to use wisely the privileges of self government and will strive to accept its responsibilities.

I believe that my purpose in college is to learn to think. I will present my best efforts in seeking what is true and will regard the classroom as a place for unquestionable honesty.

I believe in myself. Recognizing both my strengths and weaknesses, I will strive to follow the Rule of Life — that of charity toward others and service to all.

AWS Executive Council



Top row, left to right: Betsy Bond, president; Deborah Campbell, treasurer; Nedree Riggs, 3rd vice president; Beverly Jones, 1st vice president; Bottom row, left to right: Judy Clark, 2nd vice president; Carol Usry, IAWS Contact; Anita Powell, secretary.

Dear Miss Techsan,

I want to welcome you personally to Texas Tech on behalf of the Association of Women Students. You are most fortunate in that you have the privilege of attending one of the outstanding universities in the United States. You will find dedicated teachers, trained counselors, cooperative administration, and friendly students who are ready and anxious at all times to guide and assist you in every way possible.

As a member of the 1970-71 student body, you will be a part of Tech's dynamic growth, share its spirit and enthusiasm, and take part in its many activities.

Each year of your college experience will provide you with countless wonderful experiences and create many lasting friendships. You will increase your knowledge and your desire for knowledge. AWS was formed to serve you as you advance in these experiences. We hope that we may truly be of service to you and that this year will be one of your happiest.

Betsy Bond
President, AWS

AWS and You . . .

College means a number of things to you. It means work and recreation plus new friendships and new ideas. You are in for an enriching experience. And you'll want to take advantage of all sides of college—intellectual, social, and spiritual.

Many individuals and organizations are eager to help you, especially AWS (Association of Women Students), WRA (Women's Residence Association), and Panhellenic Council.

STUDY HINTS

The university campus offers so many avenues of activity that it is easy to lose sight of our primary objectives and become completely "wrapped up" in extra-curricular activities. So, remember, study comes first.

The student has few regulations outside of class hours and must learn to budget her own time. A daily schedule allotting time for study and relaxation will be of valuable service, and you will gain real satisfaction knowing that you have given the necessary time and effort to your studies.

A person with the ability to concentrate is well on the road to good study habits. Tips in developing this ability are to divide your study hours into short concentrated periods, to keep your mind on your work, to read rapidly, to allot each piece of work a certain time, and to work in surroundings conducive to concentration.

If you and your roommate study together in your room, it is wise to slip a "Do Not Disturb" sign over the door knob.

By practicing good study habits and reviewing thoroughly before exams, you

send home the grade reports that will make both you and your parents proud. So study hard, then relax.

College is filled with things to do and people to meet. Dating, campus organizations, departmental clubs, dorm life, cokes in the Tech Union—all these are avenues of relaxation.

A KEY TO CLOTHES

Now, what to wear—and when? Remember that simplicity is the key word to the Techsan's taste in clothing. For your convenience and easy access, note the Techsan Clothing Chart.

Other incidentals are brunch coat or short house coat, slacks, bedroom slippers, cottons for fall and spring, and a heavy coat for winter. The weather in West Texas is windy and there is usually snow and rain, so bring overshoes and headscarves.

THE GENTLE ART

Equally important to the Tech coed as being well-groomed and well-dressed are manners.

We have learned that one of the best ways to receive a lot of introductions is to give a lot of them. In order to introduce and to meet people with poise, you will need to practice the techniques. If you want to brush up on "how and when," here are some tips that may prove beneficial.

Always mention the woman's name first if a man and a woman are being introduced. Men always rise for introductions. Women rise only when being introduced to an older woman, or when they wish to show special respect to a

A TECHSAN'S CLOTHING CHART

Event	Dress	Shoes
Classes	Skirts & sweaters, blouses; wool or cotton dresses	Loafers, flats
Town	Dress, suit, or sweater & skirt	Flats or low heels
Dinner Date	Date dress	Heels
Informal Dances	Dress or sweater & skirt	Type optional
Formal Dances	Long or short length formal, or after-five dress	Heels appropriate for dress
Banquets	Formal or dressy dress; depends on invitation	Heels
Picnics	Shorts; slacks, jeans, skirts & sweaters	Casual shoes or loafers
Spectator Sports	Tailored clothes or school clothes	Heels or loafers depending on dress
Cultural Events	Suit or date dress	Heels
Teas & Receptions	Dressy dress or suit	Heels
Church Services	Best <u>daytime</u> dress or suit	Heels

distinguished person. A woman may shake hands with a man, but must remember to extend her hand first.

When introducing a large group, mention names of men and women in the order they are seated or standing. In acknowledging an introduction, it is courteous to repeat the name and simply to say "Hello" or "How do you do." A smile can express your friendliness better than words.

Friendliness on our campus extends to the faculty and older people. You cannot underestimate the value of showing courtesy and kindness to other people.

Remember, as you're packing for Texas Tech, put in a smile and a friendly spirit, and take them out first when you arrive.

THE COMMON GROUND

One more phase of college deserves special mention — spiritual growth. Many religious groups, affiliated with

Lubbock churches and located off-campus, offer worship, study, and fellowship. These are listed in the General Catalog under mutual interest organizations. You are invited to attend the group of your choice.

This phase of your growth is best expressed in the AWS Women's Creed—"that of charity toward others and service to all."

AWS IS FOR YOU

When you enroll at Texas Tech, there is one organization of which you as a woman student automatically become a member. This is the Association of Women Students — known more simply as AWS.

The purpose of AWS is to help you and other Tech coeds get the greatest benefits from university life by promoting unity and fellowship among women students and by providing opportunities for leadership in worthwhile activities on campus. AWS acts as a coordinating

body of all women's organizations in setting the standards for working together on campus.

IAWS

Tech's AWS is a member of a large national association — the Intercollegiate Association of Women Students. Its membership is composed of women's governing units in over 100 colleges and universities from coast to coast. IAWS was the first to establish a national association of student governments. The foundation for this organization was laid in 1913, and Tech was the first college in Texas to become a member of IAWS.

The purposes of IAWS are to foster the exchange of ideas and information on subjects of mutual interest to the member schools; to encourage a growing awareness of the responsibilities of women students in local, national, and international affairs; and to work for the improvement of women's governing groups.

AWS COUNCIL

Tech's AWS is governed by the AWS General Council. This Council is composed of the AWS officers, one representative from each women's organization, and a representative from the freshman class. The Executive Council, elected by the women students, is comprised of seven officers: president, first vice president, second vice president, third vice president, secretary, treasurer, and IAWS contact. To understand exactly how AWS works, you are encouraged to attend any regularly scheduled Council meeting.

PLANNED ESPECIALLY FOR YOU

"Never a dull moment . . ." and so it is with AWS. Its ever-expanding activity program includes:

BIG SISTER-LITTLE SISTER PROGRAM — You will be adopted as a little sister long before you arrive on campus. Your big sister should write to you during the summer and be here in the fall to help you get acquainted with campus life and to give you the benefits of her college experience.

HOWDY PARTY — This event is scheduled as a "get-acquainted" period during the first week of classes. All the women leaders on campus will be at this party to welcome you and to tell you about extracurricular activities and women's organizations at Tech.

DAD'S DAY — During the fall Dads are honored by a full day of activities including the football game and a welcoming coffee. AWS Dad's Day Committee plans the program.

WOMEN'S DAY — This is a special day set aside each spring to recognize women on our campus. Activities include a noon sandwich seminar featuring outstanding women on the Tech faculty who speak on topics relevant to today's women students, a reception for all women students and faculty women honoring the speaker for the banquet, and the Women's Day Banquet that night. An outstanding woman is invited to be the speaker at the banquet.

Recognitions at the banquet include presentation of Tech's Outstanding Woman of the Year and Faculty Woman of the Year, installation of AWS and WRC officers for the coming year, and scholarship recognition.



Left to right: Pamela English, chairman; Katie Uphaw, secretary.

President's Hostesses

Serving as Texas Tech's official hostesses, the 40 members of President's Hostesses perform many varied duties. Among their responsibilities are welcoming visitors to campus, hostessing in the Press Box during home football games, and assisting with various administrative functions. Hostesses also assist with the Red Raider Club Banquet and the Century Club Banquet.

These upperclasswomen are chosen each year by the AWS Executive Council and the chairman of President's Hostesses.

Following their selection, the new members attend an orientation tea followed by a comprehensive tour of the Tech campus.

Angel Flight

The Texas Tech Angel Flight is a girls' drill team and social organization sponsored by the Air Force ROTC Arnold Air Society.

Angel Flight is a national organization designed to create and to promote interest in the Air Force program, on and off campus. The Tech Angels participate in many campus activities such as the annual Homecoming Parade, Air Force ROTC Field Day, basketball halftimes, and various other events. Off-campus activities include hostessing for several functions such as pilot graduation at Reese Air Force Base, the Miss Lubbock pageant, and various speakers. As a drill team, the flight marches in competition and in various parades. Other activities have included trips to the Air Force Academy and to area and national conclaves.

Meetings are held on Tuesday and Thursday afternoons. Membership is limited to 46 girls. Vacancies are filled at the fall and spring tryouts. The girls are selected according to ability, poise, character, and appearance. Girls are required to have a 2.25 grade average to tryout for Angel Flight.



Left to right: Laura Murray, commander; Susan Goering, executive officer; Jo Whyman, AWS representative; Connie Smith, pledge trainer.



Top row, left to right: Barbara Reynolds, executive officer; Becky Schmidt, AWS representative; Bottom row, left to right: Dinah Doty, drill commander; Ann Ashworth, commander.

CorpsDettes

The Army CorpsDettes of Texas Tech is a girls' drill team and social organization sponsored by Scabbard and Blade and the Army ROTC.

CorpsDettes is designed to promote activities and interest in the Army ROTC program at Tech and to increase the educational experience of the members through off-campus events. The girls participate in many campus activities such as marching in the Homecoming Parade and the Rodeo Parade, preparing for the Military Ball, and hostessing various social and athletic events. Off-campus activities include marching in the Fiesta Parade in San Antonio; tours of Reese Air Force Base; and various other in-state and out-of-state drill competitions. CorpsDettes also help to sponsor the annual Southwest Drill Meet held here at Texas Tech.

The traditional Army green uniform worn by the members consists of a straight skirt and semi-fitted jacket complemented by a gold ascot and braid. Uniforms are worn every Thursday and for special events.

Members, not to exceed 45, are selected at the beginning of each semester on the basis of marching ability, poise, character, and appearance. A 2.5 grade-point average is required each semester. Meetings are held on Tuesday and Thursday afternoons.

Campus Girl Scouts of Texas Tech

Campus Girl Scouts of Texas Tech is a service organization sponsored by the Caprock Girl Scout Council. It was organized for young women with a Scouting background, although not required, who wish to continue their interest in Scouting by giving service to the local Girl Scout Council and to Texas Tech.

Projects in which the group has participated include acting as leaders or special consultants to Girl Scout troops; conducting special activities of the Council such as Playdays and Fairs; giving service to the Council Office; enjoying cookout and overnites, a trip to Palo Duro Canyon, and the companionship of those who share your interests. Our main campus project is helping at the West Texas Museum.

The only requirement in being a member of Campus Girl Scouts of Texas Tech is to be a registered member of the Girl Scouts of the U.S.A. There is one regular meeting each month.



Left to right: Patrice Schindler, president; Shirley Johnson, secretary-treasurer; Marcia Mounts, AWS representative; Linda Sears, vice president.



Left to right: Ann Barton, president; Judy Foreman, vice president; Jo Carole Felton, AWS representative.

Major-Minor Club

Welcome to Texas Tech and to the Women's Physical Education Department.

The Major-Minor Club is a professional and social organization for women students majoring, minoring, and specializing in physical education.

The purposes of the club are to develop a professional attitude toward health, physical education, recreation, and related fields; to develop character traits of its members that will promote professional growth; to develop a better and closer relationship among its members; to promote the development of the profession by providing leadership and service in the club, University and community.

Officers are Ann Barton, president; Judy Foreman, vice president; Kathy Minyard, secretary; Chris Clements, treasurer; and Jo Carole Felton, AWS Representative.

Women's Service Organization

Since its origin as a committee of the Association of Women Students in 1959, Women's Service Organization has increased in size from the original seventeen members to almost a hundred or more active and inactive members at the present time. The women of the organization contribute over 1700 service hours to the campus and community each semester.

Women's Service Organization gives the woman student an opportunity to be of service to the University while identifying herself with a respected group. The maroon and white uniforms of WSO are a familiar sight on campus as the members proudly work on numerous projects including homecoming activities, campus elections, annual bike race, Mile of Pennies for the World University Service, ushering, United Fund, Girlstown, reading for blind students, Dad's Day and working with the annual Carol of Lights.

The principles of friendship, service, and equality are stressed during the period of pledgeship as well as among the active members of WSO. During the approximate ten-week pledgeship, pledges become acquainted with activities through working on joint projects and signature appointments. The requirements for initiation are few: a 2.25 grade average; ten service hours; and most important, a desire to serve.



Top row, left to right: Marilyn McGuire, secretary; Linda Morrison, AWS representative; Judy Laney, treasurer; Sharon Wurford, parliamentarian; Bottom row, left to right, Juana Young, pledge trainer; Robbie Martin, president; Sharon Leach, vice president.

Student Association



Bonnie Craddick, Secretary of Student Association

Student Association

The leadership of student government of our University is vested in the executive officers of the Student Association: president, vice president, secretary, and business manager. The president serves in an executive role, while the vice president and the secretary are involved with the procedures of the Senate. The business manager is concerned with the finances of student government.

Our Senate is modeled after the national Senate. The students elect senators from the academic schools, the number of which is apportioned according to the enrollment of each school. Senators may introduce legislation in the form of bills or resolutions. After passing the Senate, the bill is sent to the president, who approves or disapproves the legislation. The vice president presides over the Senate. As secretary, I take the minutes of meetings, prepare all legislation that is introduced, and check attendance of the senators. The secretary serves as the only woman representative on the executive board of the Student Association.

After a bill or resolution has been passed by the Senate and the president, the legislation still has to be presented to the University administration. It is our responsibility to work closely with the administrators so that they might know the opinions of the students. As secretary, I am looking forward to the opportunity of working with Dr. Murray and his administration for a greater University.

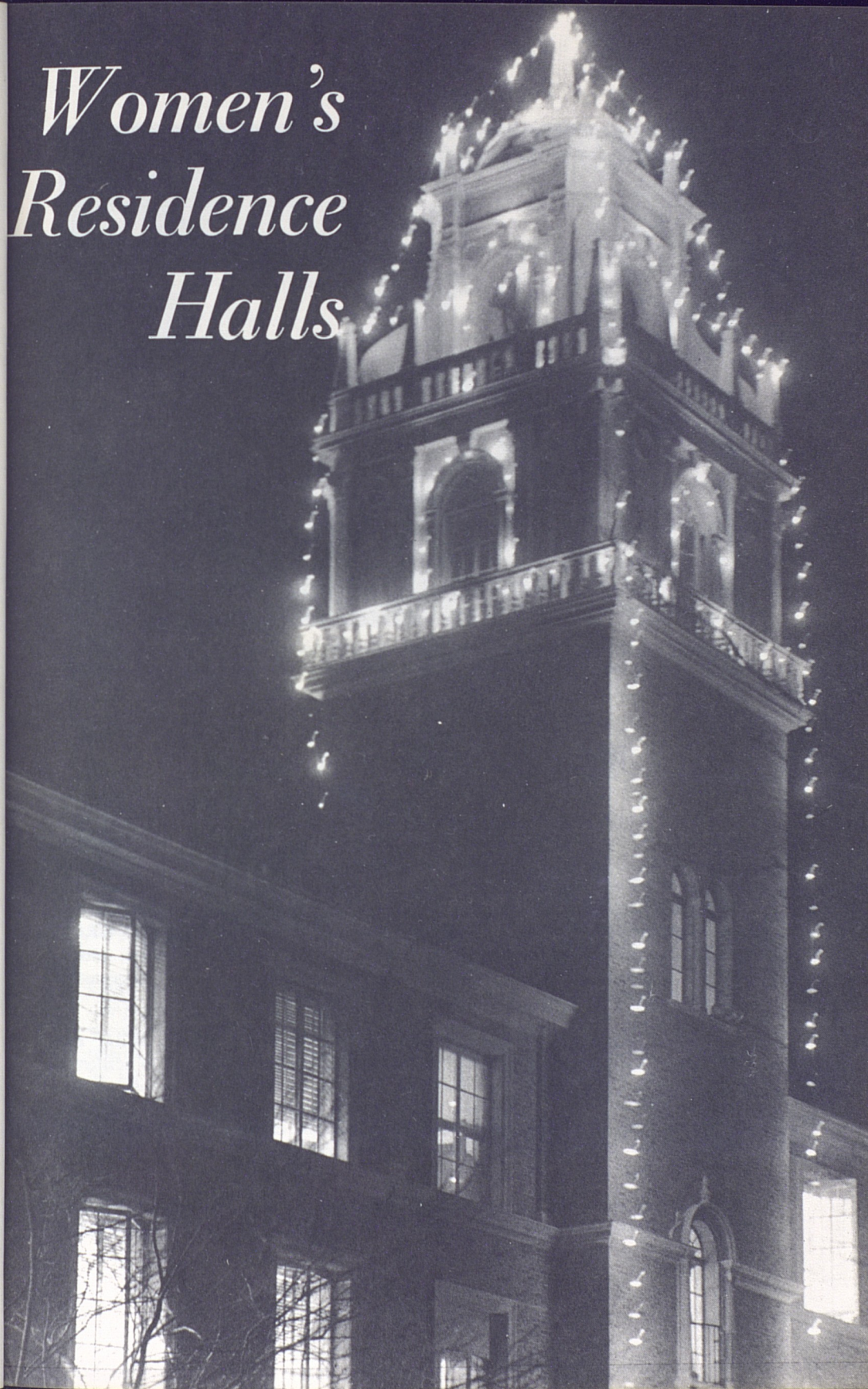
Freshman Council

The Freshman Council is composed of freshman representatives elected at the first of the fall semester from off-campus students and each residence hall. The newly elected head freshman cheerleader is also a member. The Freshman Council allows the freshman students to have a voice in their student government. The Council aids the interested student in becoming active and acquainted with the student government of Texas Tech. Freshman Council aids the Senate by providing a greater "pool of manpower." Projects of Freshman Council include: academic recruiting in high schools, promotion of athletic events, money raising projects for the freshman treasury, and the election of freshman cheerleaders.



Denise Westbrook, AWS representative of Freshman Council

Women's Residence Halls





Left to right: Kathryn Ann Baker, vice president; Judy Storm, president; Gayle Smure, secretary-treasurer; Mary McKeever, judiciary chairman, not in picture.

Women's Residence Council

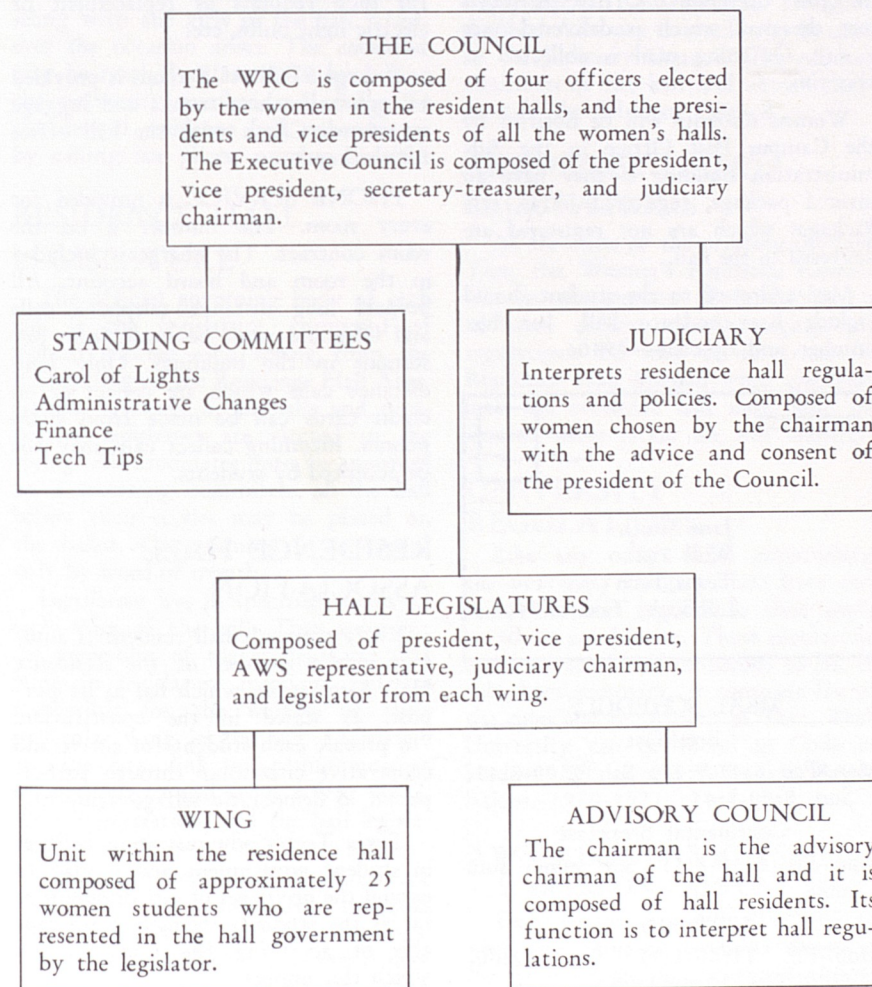
The Women's Residence Council, composed of the presidents and vice presidents of each hall, is the policy-making organization for the women's residence halls and the Women's Residence Hall Association. This association consists of all residents of the Texas Tech women's residence halls. Upon moving into a residence hall, the woman resident automatically becomes a member of this organization. The officers of the Women's Residence Council (WRC) are then elected by all women living in residence halls. WRC members, acting as official representatives of their halls, discuss questions of student government and regulations which arise in the residence halls.

As an important communications link for women residents, WRC encourages an effective cultural program and an atmosphere conducive to academic learning. The Carol of Lights, a major fall project, has become an annual campus tradition marked by residence hall choirs singing Christmas carols and climaxed by the turning on of the lights which highlight the campus during the holiday season. Other projects include scholarship trophies given in the spring to the upperclass hall and to the freshman hall with the highest grade-point average.

One of the more recent Women's Residence Council's projects was the creation of the MARSHALL L. PENNINGTON LOAN FUND established

in 1967. This loan fund, which establishes a short-term loan for second-semester freshmen and upperclass women in the residence halls, was increased by WRC in 1968 and 1969.

WOMEN'S RESIDENCE COUNCIL ORGANIZATIONAL CHART



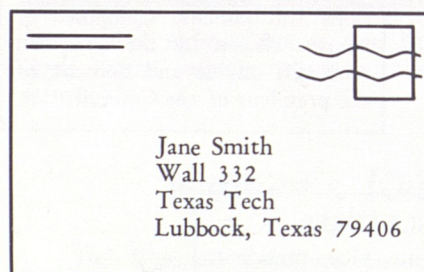
A Guide to Residence Hall Living . . .

HERE'S HOW IT'S DONE

A resident's MAIL is put in a mailbox assigned to her when she registers in the residence hall. Mail boxes for the Wiggins Complex are found in the Wiggins Commons. Office assistants sort the mail which is delivered once a day. Outgoing mail is collected at this time.

Women students will be notified by the Campus Post Office in the Administration Building if they have an insured package, registered letter, etc. Packages which are not registered are delivered to the hall.

Mail addressed to the student should include her residence hall, her box number, and zip code—79406.



MEAL SCHEDULE

Breakfast

Mon.-Fri. 6:45-8:15; Sat. 8:00-8:45;
Sun. 8:00-8:45

Continental Breakfast

Mon.-Fri. 8:30-8:45; Sat. none; Sun.
none

Lunch

Mon.-Fri. 11:00-1:15; Sat. 12:00-
1:00; Sun. 12:00-1:00

Dinner

Mon.-Fri. 5:15-6:30; Sat. 5:15-6:30;
Sun. none

There are LAUNDRY and drying rooms in each women's residence hall

with automatic washers (25¢ per load) and dryers (10¢ per load).

All needed REPAIRS should be reported to the office. Each hall has its own "Mr. Fixit" to make repairs and fill such requests as replacement of electric light bulbs, etc.

A large STORAGE room is provided in each hall where trunks and luggage are stored. Check with the hall office for the key.

PHONE SERVICE is provided for every room. The number is on the room contract. The charge is included in the room and board account. All prepaid long distance telephone calls and telegrams must be made from pay stations in the buildings. Only long distance calls which are collect or on credit cards can be made from room phones. Incoming collect calls may not be accepted by students.

RESIDENCE HALL ASSOCIATION

Every women's hall resident is automatically a member of the Residence Hall Association, which has as its purpose, as stated in the constitution, "to prepare each student for active and cooperative citizenship through participation in democratic self-government."

Texas Tech's administration believes in student government and is glad to extend the privileges of self-discipline as far as the students themselves are capable of accepting the responsibilities which this implies.

Social dues, which may range from \$1.50 to \$5.00, are paid to the Residence Hall Association as the woman resident checks into the resident hall. The social dues help pay for dorm parties and dorm projects.

RESIDENCE HALL COUNSELORS

Each residence hall has one adult supervisor, the hall counselor, who is professionally trained for her job. The counselor is responsible for administering a smoothly run hall with an atmosphere conducive to study and for counseling with the girls in the hall whenever the occasion arises. The counselor may be reached at any hour by calling the university number and asking for the desired residence hall counselor or by calling her phone number directly.

RESIDENCE HALL LEGISLATURE

The official governing body of each hall is the legislature, composed of women selected each spring from the membership of the Residence Hall Association. Officers in all halls and prospective legislators are elected in the spring. All candidates must be approved by a screening committee of the hall before their names may be placed on the ballot. Campaigning is conducted only by word of mouth.

Legislators live in specified rooms on each wing of the hall. They represent the viewpoint of the students on that wing in legislature meetings and are responsible for the welfare of their particular wing in the hall. Legislators are the key link in communicating information to and from AWS, WRC, the administration, and the hall legislature.

Legislature and wing meetings are held once a month. All residents must attend wing and hall meetings. Except in emergencies, students may not sign out for overnight on wing meeting nights.

THE ADVISORY COUNCIL

Advisory Council is the agency through which the rules of the hall are interpreted. This group advises the resi-

dents on hall regulations and policies. In each hall the Advisory Council is set up under the hall's student government. The purpose is to consider cases of young women who have broken hall policies or regulations. The council has the responsibility to decide on the restrictions of a student's social privileges. Appeals and referrals from individual Advisory Councils may be made to the Judiciary Council. The advisory chairman of the hall will act as chairman of the Advisory Council.

RESIDENCE HALL REGULATIONS

At the time of the printing of Tech Tips, the Women's Residence Council was in the process of introducing a no-hours policy, thus changing hall regulations. Be sure to refer to the Residence Hall Manual when checking into the residence hall next year for further information on this subject.

UNIVERSITY REGULATIONS

Like any other social community, the university campus must have certain rules and regulations that apply to all its inhabitants. These regulations are too varied and numerous to list in this short summary. A complete list of the rules and regulations of Texas Tech University can be found in Code of Student Affairs and Rules and Regulations, 1970-1971.

AWS REGULATIONS

A. DRESS ON CAMPUS

Tech women are requested not to wear blue jeans or bermuda shorts in the Tech Union, or academic buildings including the library.

B. MEN'S RUSH PARTIES

(1). Young women may act as hostesses at these events and may participate in entertainment as long as it is in good taste.

(2) There is no designated number of women that may attend the party as hostess, although sorority women should be aware of the Panhellenic policy which governs their members' participation.

C. SERENADES

The fraternity desiring to serenade should contact the residence hall counselor by 12:00 noon of the day preceding the serenade in order to avoid conflicts with other serenading groups. The same procedure holds for Phi Mu Alpha. Any other organization desiring to serenade should contact the president of WRC by 12:00 noon of the day preceding the serenade to obtain approval from WRC. Fraternities have priority to serenade on Monday nights. Phi Mu Alpha has priority to serenade on Wednesday nights. The WRC shall notify the residence halls and organizations requesting permission of those permissions granted in order to avoid possible conflicts. Serenades shall begin at 10:30 P.M. and 11:00 P.M. This schedule permits two per evening at each hall, Monday through Thursday, and allows ample time for women to return to their respective halls by 11:30 P.M., closing time. Exceptions to this rule are wing meeting nights, at which time no serenades will be held.

Lubbock women may be serenaded at one of the women's halls not already reserved by a hall resident.

After a request for a serenade of a sorority woman has been scheduled by the hall counselor, the sorority being serenaded must take an alphabetical list of the freshman students in the sorority to attend the serenade from each freshman hall to that hall office. This list should be in the residence hall office by 8:00 P.M. of the night of the serenade. Only residents whose names are on these lists may go to the serenade.

D. SORORITY SLUMBER PARTIES

Slumber parties may be held on Friday or Saturday evening. It shall

be to the discretion of each sorority as to the number of slumber parties they have each semester. The following procedure should be consulted in scheduling the slumber party:

(1) At the beginning of the fall semester, each sorority shall be responsible for submitting 21 copies of the names and residence hall addresses of its membership—actives and pledges. These lists will be verified and sent to the Housing Office to be distributed to each residence hall and kept on permanent file for the entire school year.

(2) Schedule the slumber party on the social calendar with the proper social activities card, signed by the faculty sponsor, to be obtained in the Office of the Director of Student Activities, Room 171, Administration Building.

(3) If difficulty in locating the faculty sponsor for her signature or securing chaperones persists, notify the Office of the Director of Student Activities to insure that a late penalty for an organizational offense will not be imposed.

(4) Information which **MUST** be included on the Social Calendar:

Organization: Gamma Zeta Pi

Date: Friday, January 39, 2001

Time: 8:00 P.M. Friday-10:00 A.M. Saturday

Place: Gamma Zeta Pi Lodge, 1002 Lodge Road

Sponsor: Mrs. Jane Jinx

(5) If the information is not in the resident halls, the residents will not be able to sign out for the slumber party.

Other details of AWS, WRC, and resident hall procedures are printed in the residence hall manual *Here's How*, the AWS Constitution (found in the Appendix of this handbook), the WRA Constitution (found in the Appendix of this handbook), and residence hall constitutions.

Chitwood Hall

Chitwood is tops! Come be a Chitwood girl, and you will enjoy all the conveniences of living in the newest women's residence hall.

Located on Flint Avenue, Chitwood will begin its fourth year on Tech campus as a co-educational residence hall for Tech women. Chitwood is connected with Weymouth, the newest men's hall. On the first floor, Chitwood and Weymouth share a snack bar with adjacent concession room and a recreation room with a check-out room for game equipment.

This beautiful, modern hall has many extra facilities for women students.

For your leisure and relaxation, there is an informal lounge with its unique color scheme on each floor. Along with each of these informal lounges, you will enjoy the use of a typing room and a storage room for luggage. In the basement there is a private room for TV watching and a study room. Other modern conveniences include postal service, kitchenette, year-around air conditioning, telephones in each room, elevators, and a private sundeck on the roof.

Chitwood is still new and is open to ideas and suggestions from its residents. Come join us and let's make this year the best one yet!



Left to right: Mickey Tattan, president; Gina Rayle, vice president; Susan Wiggs, judiciary chairman; Karen McBride, AWS representative.



Left to right: Marilyn Harris, judiciary chairman; Michelle Boutin, president; Darrah Grier, AWS representative; Nick Papaila, vice president.

Clement Hall

Come live in Clement Hall! We are located on the corner of 19th and Flint. A friendly atmosphere greets each girl who enters Clement.

We have a spacious contemporary formal lounge complete with baby grand piano. For less formal entertainment, the informal lounge may be used for playing bridge or watching color television. Other conveniences include year-round air conditioning, an enclosed sun-bathing patio, a centralized concession room, private telephones in each room, a basement TV and study room, laundry facilities, and elevators.

To provide opportunities for partici-

pation, we have all-hall parties, intramural sports, exchange dinners, a weekly devotional, serenades by fraternities, and open house for special occasions. Clement also has a scholarship banquet each semester honoring those who have excelled in their particular studies and an appreciation banquet for legislators and officers. Clement Hall girls are always quite active in all aspects of campus activities, a tradition which has contributed to Clement's honor list and trophies.

This year promises to be as successful as the last. Come join us and make this year as exciting as the others.

Coleman Hall

Located on Flint Avenue, Coleman Hall welcomes all of you to her second year as a women's dormitory. This new high-rise hall offers a lounge, typing room, luggage room, and ironing room on each floor. Other conveniences include a private sundeck on the roof, year-round air-conditioning, elevators, and extra built-in storage space. There is also a private TV room in the basement.

To provide a friendlier atmosphere, Coleman offers an all-dorm Christmas party, open houses, intramural sports, and numerous wing gatherings. As part of the Wiggins Complex Coleman shares with the Chitwood-Weymouth coed buildings the dining hall, snack bar, and game room facilities.

Of particular interest are the special regulations for the eligible women in Coleman. These women include graduate students, seniors, and women who are twenty-one years old or over. They sign a regular room and board contract but may cancel the contract at the end of the semester without forfeiture penalty. In addition, these students have selective hours and so may enter and leave the hall at their own discretion. For the safety of the residents within the hall, a security guard will be on duty at the specified selective hours entrance.

This year promises to be a great one and we hope that you will join us in making it one of the best!



Left to right: Sue Hunt, president; Brenda Williams, vice president; Rosemary Rogers, judiciary chairman; Diane Jaynes, AWS representative.



Left to right: Peggy Purvis, president; Rosalou Short, vice president; Audette Vaughn, judiciary chairman; Karen Rhew, AWS representative.

Doak Hall

In a typical, old time collegiate setting at the end of a long walk and under an alcove of trees, is ivy-covered Doak Hall.

Doak is the most centrally located of all women's halls. It is just south-east of the Home Economics Building, and within walking distance of the Bookstore, Tech Union, Ad Building, Circle, and surrounding buildings. It is connected to another women's hall, Weeks, and shares a joint cafeteria.

The hall, one of the first buildings on campus, was named for Mary Doak, first Dean of Women at Texas Tech. Doak houses approximately 300 women

in light green rooms with wood furnishings.

Hootenannies, "happenings," stuffed animal pet shows, and holiday parties add to the friendly atmosphere of Doak. The color television and piano in the air-conditioned second floor lounge offer welcome diversion for residents and their dates.

Scholarship in Doak is encouraged through the newly redecorated, air conditioned study hall and the scholarship banquet each semester for residents with a 3.0 grade average.

We hope you'll enjoy living in Doak as much as we do.

Gates Hall

Everyone wants to be a Gates girl. For six years Gates Hall has been acclaimed as a freshman dorm, but this year Gates will begin its tradition as a freshman and upperclassman residence hall still retaining the excitement and tradition that Gates' girls originated.

In its short history, Gates has already earned an honorable reputation by winning many honors. Gates' girls have also brought recognition to their residence hall by serving as participants and hostesses for many Tech activities.

Gates Hall is always bustling. Some dorm activities include a Halloween party, a homecoming decoration contest, a Scholarship Banquet, wing dec-

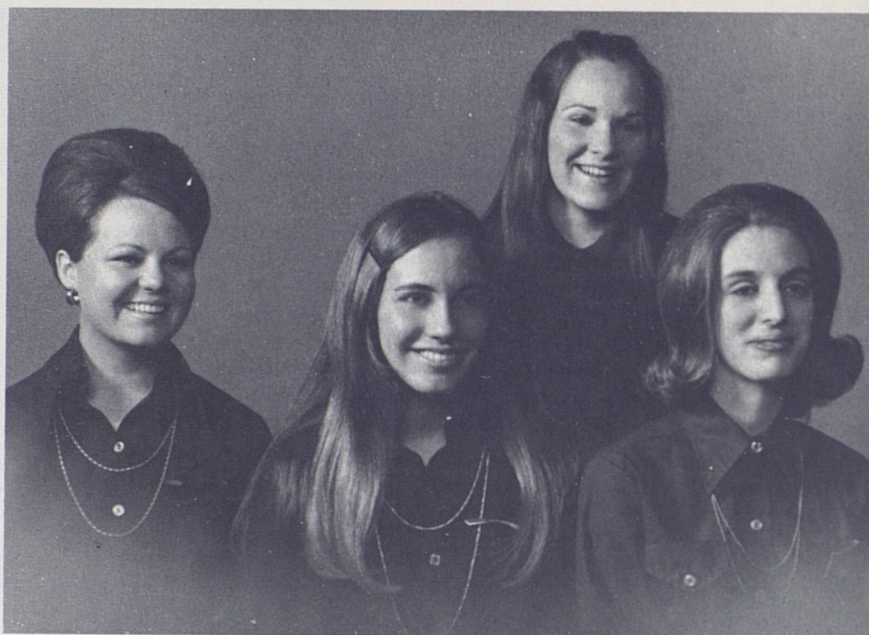
oration competition at Christmas, and an Easter hat parade consisting of ridiculous hats designed by each wing. There are also mixers and intramural sports with men's dorms.

Gates is centrally located and was built with a modern and home-like atmosphere. Gates is equipped with an enclosed patio used for parties and sunbathing. There are also telephones in each room, laundry facilities, elevators, and study rooms. Gates is proud of its beautiful formal lounge and its cozy informal lounge with a color television.

Gates is an all-around dorm—and Gates' girls are all-round girls.



Left to right: Pam Parker, judiciary chairman; Pam Parmer, AWS representative; Anne Laux, president. Judy Clark, vice president, not in picture.



Left to right: Marsha Mills, president; Stacy Kiser, vice president; Leah Squyres, AWS representative; Nancy Horner, judiciary chairman.

Horn Hall

Friendliness, enthusiasm, and activities are always found in Horn. Fraternity serenades, followed by a succession of mixers with men's residence halls, start the year off right. Then there are homecoming decorations, all-dorm parties, intramural sports, and exchange dinners with boys' dorms.

Horn girls greet Christmas with enthusiasm. The girls decorate their doors and there is an all-dorm party where everyone sings carols and helps decorate the tree that stands in the lobby. The girls also form a choir for the Carol of Lights.

Scholarship is important to each student; there are private study rooms on two floors which are open all the time. With spring comes our scholar-

ship banquet and a picnic with the girls from Knapp. The Freshmen Representatives of Horn annually sponsor a Street Dance.

Horn offers many advantages. The informal lounge is perfect for relaxing, watching color TV, and playing cards. The formal lounge is a wonderful place for visiting and entertaining dates and friends. You may play the piano or the new stereo. It is also the place for our short weekly devotionals. Besides all this Horn offers telephones in every room, laundry facilities, a TV room, a concession room, a grassy sunbathing area, a beautiful view, and a perfect location! What more could you ask for? We can't think of a thing. Join us, won't you!

Hulen Hall

Want to come join the fun? A big "howdy" greets you from the doors of Hulen Hall. Known as one of the friendliest dorms on campus, Hulen Hall is connected with her sister dorm, Clement Hall.

Hulen abounds with activities throughout the year. A homecoming coffee and a Dad's Day Open House are given each year for alumnae and students. "Three-pointers" are honored with a Scholarship Banquet. Traditional celebrations include a Christmas party, a spring picnic with a band, an appreciation banquet for legislators and officers, and a transfer party.

Designed for both leisure and study, Hulen is equipped with many modern

conveniences. A glassed-in cafeteria adjoins the formal and informal lounges, and a kitchenette is available for parties and social entertainments. Other conveniences include year-around air-conditioning, a sunbathing patio, telephones in each room, a color T.V., laundry facilities, a study room, and a utility room.

Residents may enjoy piped-in music, books and encyclopedias, movies shown in the cafeteria, and study halls held in the cafeteria during finals.

Enrich your college experiences — friendship, fun, and activities are yours at Hulen Hall.



Left to right: Mary Roten, vice president; Cary Gay Williams, president; Janice Nelson, judiciary chairman.



Left to right: Karen Cox, vice president; Shirley Johnson, judiciary chairman; Marian Schmidt, AWS representative; Judy Wilkinson, president.

Knapp Hall

The friendly traditions of Knapp Hall will continue as Knapp progresses from a freshman hall to an all class dorm. Knapp girls are proud of their campus home and wish to share with all the women at Tech its friendships that are well established.

Knapp, one of the older dorms, is centrally located on the campus, for it is within one block of the Student Union, the Library, the Infirmary, the Bookstore, the Women's Gym, and the Music Building.

The activities of the hall respond to the needs of the girls with emphasis on scholarship as well as on participation in campus activities. The all-dorm parties, serenades and mixers with men's halls, and intramural sports (Knapp won the all-campus basketball cup this year) are a few of the things planned to promote new friendships. Knapp's

unique Christmas traditions include a candlelight service with Christmas carols and the "Knapp Doll House" from which we contribute dolls for the "Toys for Tots". A new tradition that Knapp hopes to continue is the highly successful Spring Formal of 1970.

Knapp has an informal lounge for playing cards or table tennis and for watching color television. The formal lounge has a grand piano and a lovely stereo record player. Knapp girls are also proud of the large rooms with moveable furniture.

High scholastic achievement is promoted by the girls of the hall. The study room and project room are in constant use. Knapp had one of the highest grade-point averages this fall. A special banquet is held for the girls making a 3.00. "Knappians" are known to promote spirit and unity on campus.

Stangel Hall

The 521 Tech women who live in Stangel Hall are offered the opportunity to live in the first co-educational residence hall on the campus. It is connected to Murdough Hall, men's hall, by a lounge and cafeteria on the first floor and mezzanine, a recreation room, and snack bar in the basement.

The activities of the hall will cater to the needs of all women students with the emphasis on scholarship, friendliness, and participation in campus activities. Study rooms are provided on the upper floors as well as in the basement after closing hours. Those attaining high levels of scholarship are honored throughout the year. Friendliness is encouraged by the atmosphere of the

hall and through the participation in hall and campus activities, such as the celebration of holidays, birthdays, and special days on the campus.

The facilities of the hall are of a unique quality and certainly add to the pleasure of living in this dorm. A beautifully decorated and very comfortable snack bar will be available to Stangel Hall residents. The landscaping includes a garden area adjacent to the snack bar. A glassed-in cafeteria is on the mezzanine, which overlooks the lounge and office area. Facilities are provided on the mezzanine for card playing, visiting, and television viewing.

We hope you will join us in Stangel Hall.



Left to right: Sherry Hartman, AWS representative; Nancy Flack, judiciary chairman; Debbie Price, president; Laura Stout, vice president.



Left to right: Linda Riek, vice president; Diane Effenger, president; Becky Trickey, AWS representative; Cynthia Chandler, judiciary chairman.

Wall Hall

A year of fun and unforgettable friendships awaits you in Wall Hall. The spirit and activity of Wall contribute greatly to a successful year. Won't you come where the action is?

This home of 404 coeds is easily accessible to the Library, Student Union, and academic buildings. A concession room for quick snacks, color television, informal lounge where bridge foursomes often gather, and a private study room are added benefits for comfortable dorm living. One particularly nice feature of Wall is an enclosed courtyard which is covered with sun worshippers beginning with the earliest days of spring. For your convenience, Wall has laundry facilities, elevators, and a phone in each room.

Special traditions maintained by Wall are serenades by fraternities and men's dorms, the scholarship banquet, mixers, and seasonal parties, often with skits presented by each wing. Exchange dinners and open houses give Wall girls the chance to show off their dorm to friends, family, and dates. Each year, the girls eagerly await the tapping of legislators.

Wall coeds really go places, in the dorm as well as on campus. Scholarship is not slighted, however, for as a former freshman dorm, Wall held the trophy for the dorm with the highest grade average for four consecutive years. All of these many activities and honors add up to fun . . . and a girl from Wall is fun!

Weeks Hall

You will find that living in Weeks Hall will add a special charm to your college days, for Weeks Hall offers you beautiful, tasteful surroundings, and modern living conveniences.

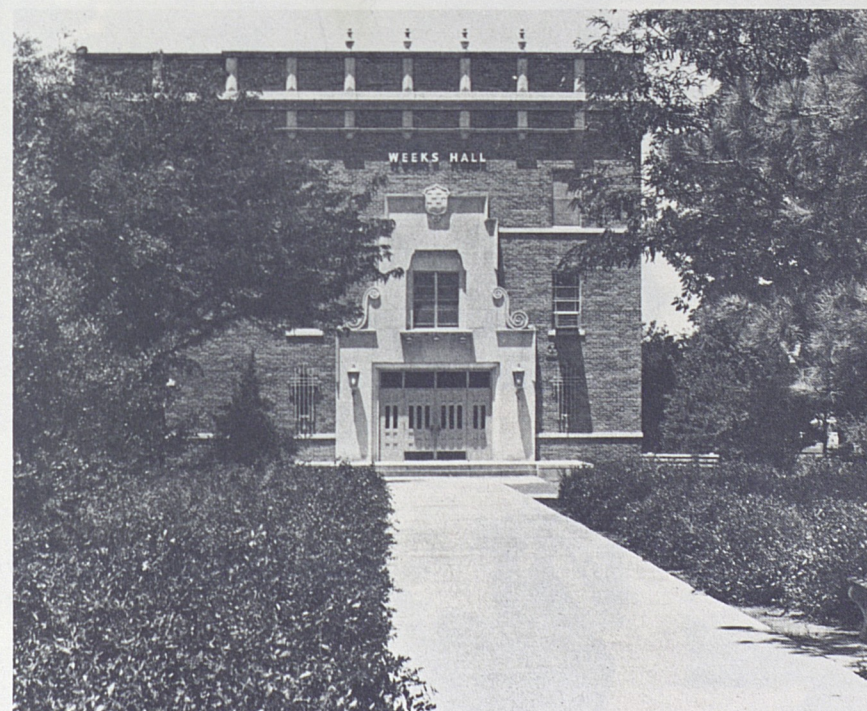
Just off the main lobby is the formal lounge for entertaining your friends and parents. An informal lounge is perfect for watching favorite television programs and playing bridge games with friends and dates.

You will find a friendly and relaxed atmosphere in Weeks Hall. This becomes apparent in the all-dorm parties, wing parties, and the occasional im-

promptu buzz sessions that take place in the cafeteria, on the stairs, or just about anywhere that two or more Weeks girls get together.

You will also enjoy the all-dorm parties, serenades by fraternities, intramural sports, and other group activities taking place all through the year.

We are especially proud of our scholarship trophy after winning it ten years in succession. We will be working hard to continue this record. We know that you will find your stay in Weeks a memorable living experience.



Honoraries



Barbara Horsman

Alpha Lambda Delta

Alpha Lambda Delta, national honor society, extends membership to any freshman woman who has a 3.5 grade average and 15 semester hours credit. If she does not qualify at the end of her first semester, a freshman may become eligible by attaining a 3.5 over-all grade average with 30 semester hours.

Activities are many and varied for the Alpha Lambda Delta member. In the fall the society conducts an orientation program for all freshman. "Fire-side chats" are held in conjunction with Phi Eta Sigma, freshman men's honorary. At the fireside chats a Tech professor discusses current topics with the societies' members. In the spring new member are honored at a banquet with Phi Eta Sigma, and at the Women's Day Banquet an awards is presented to the Alpha Lambda senior who has maintained the highest grade point average.

OFFICERS

President Barbara Horsman
Vice President Ann Graham
Secretary Cathy Barton
Treasurer Denise Shiver
Initiation Chairman Mickey Jarrett
Reporter Pam Thompson



Junior Council

Recognized for outstanding leadership, scholarship, and character, members of Junior Council wear the red blazers which indicate that they have received the highest honor which can be conferred upon a junior woman.

To become a member of Junior Council, one of the oldest woman's organizations on the campus, twenty-five outstanding second semester sophomores must have at least a 3.0 over-all. Once tapped, the members participate in various projects including two fund-raising shoe shines and Junior Techsan Day, when Junior Council treats children from the various children's homes in Lubbock to a Tech football game and a party in their honor. Junior Council is always ready to serve Tech in any needed capacity.

OFFICERS

President Jan Stephenson
Vice President Gayle Snure
Secretary Betsy Brown
Treasurer Jeanie Griffith
Historian Pam Whitley
Public Relations Gina Rayl
AWS Representative Laura McElroy
Membership Chairman Marsha Mills
Social Chairman Kaye Hilliard



Jan Stephenson

Mortar Board

"We Mortar Boards receive you with welcome hearts and hands . . ." echoes over our campus one special day each spring as Forum Chapter of Mortar Board taps its new members. Five to twenty-five junior women are admitted to this select group each year. It is the highest honor they may receive, based upon scholarship, leadership, and service.

Mortar Board was founded in 1918 and has over 117 college and university chapters in all parts of the United States. After many years of petitioning the national organization, Forum became Mortar Board in 1957.

Mortar Board strives to serve both its individual members and the campus. Activities include the Homecoming Coffee for alums, hostessing Operation Senorita, the Smarty Party for freshman women having a 3.0 grade average, and attending various cultural events together.

Mortar Board introduced last year Faculty Appreciation Week, whereby outstanding faculty members were recognized with a book placed in their honor in the Tech Library.

OFFICERS

President Katie Upshaw
Vice President Amy Trail
Secretary Susan Goering
Treasurer Jean Ann Cannon
Projects Anita Bell
AWS Representative Rosalyn Davis



Katie Upshaw



Jeannie Smith

Delta Psi Kappa

Delta Psi Kappa, the honorary fraternity for women majoring or minoring in physical education, has as its objectives the promotion of fellowship and the advancement of the ideals, interests, and welfare of women in the field of physical education.

Beta Iota chapter was organized on the Tech campus in March, 1967.

Prospective members must have completed 15 hours in physical education and must have a 2.7 overall average and a 3.0 average in physical education. They must also be active in professional service to, and promotion of activities in, the Physical Education Department.

OFFICERS

President Jeannie Smith
1st Vice President Nancy Turner
2nd Vice President Peggy Barney
Secretary Connie Bellinghausen
Treasurer Mina McDonald
Chaplin Sally Tarkington
AWS
Representative Mary Sue Meneley
Reporters Ann Barton and
Janie Beddingfeld



Sara Peek



Mu Phi Epsilon

"Music is the noblest of the arts, a source of much that is good, just, and beautiful." This symbolizes the unity felt among Tech women music majors and minors of Mu Phi Epsilon.

This international professional music sorority for women was founded at the Metropolitan College of Music in Cincinnati, Ohio, on November 13, 1903. The Tech chapter, Epsilon Pi, was installed in 1952.

Epsilon Pi requires its members to have a 2.5 overall grade average with a 3.0 grade average in music courses. Qualities of musicianship, leadership, and friendliness are essential.

Tech's chapter supports recitals on and off campus and performances of individuals in the musical productions of Tech. A musical therapy project has been organized in which the sorority will aid the state school in Lubbock. Epsilon Pi also has some functions during the semester with their brother fraternity, Phi Mu Alpha. An award is presented annually by the chapter to a deserving and talented member.

OFFICERS

President Sara Peek
Vice President Janeen Drew
Secretary Emily Sumner
AWS Representative Susan White

Phi Gamma Nu

Tech women majoring in business administration express their views and goals through Phi Gamma Nu, a national women's professional sorority established at Tech in 1949. Lambda Chapter encourages scholarship and active participation in college activities.

Through Phi Gamma Nu, future businesswomen learn about the world of business they will soon enter. Tours of Lubbock business firms and dinner banquets featuring professional speakers are enjoyed by the members.

Members are women students working toward a degree in some phase of business administration. Pledges must have completed at least 6 hours of commerce and have a 2.5 grade average. The senior coed majoring in business administration with the highest scholastic average receives a scholarship key each year.

OFFICERS

President Janelda Hays
Vice President Di Doshier
Secretary Cindy Jones
Treasurer Lydia Buske
AWS Representative Barbara Martin
Rush Chairman Teresa Dawkins
Pledge Trainer Rosemary Monaco
Reporter Kathy Baldwin
Efficiency Betty Kelly
Historian Linda Stanton



Janelda Hays

Phi Upsilon Omicron

Members of Phi Upsilon Omicron are chosen from women majoring in home economics who have completed their sophomore year and have an over-all grade average of 3.0 or better.

The honorary fraternity bases selection on character, scholarship, and campus activities, as well as on interest in home economics as a profession.

The activities of the organization give meaning to the stated purposes of strengthening the bonds of friendship, promoting the moral and intellectual development of its members, and advancing and promoting home economics.

Each year the group contributes to the Phi Upsilon Omicron scholarship and supports local welfare and alumni projects. Two teas are given annually, one for freshmen in home economics and one on Founder's Day.

OFFICERS

President Rebecca Hutchinson
Vice President Mary Staudt
Recording Secretary Pat Freitas
Corresponding Secretary Barbara Miller
Treasurer Cynthia Summers
Chaplain Nan Jones
Historian Marilyn Harris
AWS Representative Ann Rucker



Rebecca
Hutchinson



Kay Hooper

Tau Beta Sigma

Tau Beta Sigma, the honorary fraternity for bandwomen, was granted its national charter on March 26, 1949; on May 4 of that year, Beta Chapter was installed on the Tech Campus. Tau Beta Sigma was actually founded on the Tech campus; Alpha chapter, however, is located at Stillwater, Oklahoma, in order to share headquarters with Kappa Kappa Psi, the honorary fraternity for bandmen.

The purpose of the sorority is to promote and cultivate a wholesome respect for band activities, to honor outstanding bandwomen, to stimulate campus leadership, to foster a closer relationship among college bands, and to provide a pleasant social experience.

To become a member, a coed must be a member of one of the Tech bands and have a 2.25 grade average for the semester prior to her initiation.

Throughout the year, the chapter's greatest contribution and responsibility is the completion of the numerous essential tasks which maintain "That Goin' Band from Raiderland" in its rightful position of repute and respect throughout the nation.

OFFICERS

President Kay Hooper
1st Vice President Charlotte Duval
2nd Vice President Jean Ann Cannon
Recording Secretary Linda Vaughn
AWS Representative Laura Stout

University Panhellenic



THE PANHELLENIC CREED

We, THE UNDERGRADUATE MEMBERS of women's fraternities, stand for good scholarship, for guarding of good health, for maintenance of fine standards, and for serving, to the best of our ability, our college community. Cooperation for furthering fraternity life, in harmony with its best possibilities, is the ideal that shall guide our fraternity activities.

We, THE FRATERNITY WOMEN OF AMERICA, stand for service through the development of character inspired by the close contact and deep friendship of individual fraternity and Panhellenic life. The opportunity for wide and wise human service, through mutual respect and helpfulness, is the tenet by which we strive to live.

An Introduction to University Panhellenic...

Dear Rushee,

You will soon arrive at Texas Tech to begin your college career. Many of you will participate in MEMBERSHIP SELECTION WEEK, a program that can result in many friendships for you, regardless of whether or not you pledge a sorority. A rushee has the opportunity of meeting hundreds of other new students and an equal number of sororities taking part. You will meet your future sorority sisters and other girls with whom you will form close friendships.

Before you arrive, you will want to give careful thought to what sorority membership should mean in terms of your obligation as a future member and in terms of what you expect to gain personally through this association.

The thirteen National Panhellenic Conference sororities on the Tech campus maintain high standards in matters of personal conduct, scholarship, and campus citizenship. The all-sorority grade average is consistently higher than the all-college or all-women's grade average. Your scholarship is an important consideration for the sorority, for its members are expected to maintain above average academic ranking. In addition, each sorority supports a national philanthropy; each member, collegiate and alumna, participates in the local projects. Those of you who understand the relationship between a member and her sorority and who wish to share in this relationship will find the group best suited to you personally. An open mind and natural, friendly manner will assure a meaningful and enjoyable MEMBERSHIP SELECTION WEEK for you. We look forward to meeting you soon.

Pat Neal
University Panhellenic Association



Top row, left to right: Nonya Pate, junior panhellenic; Pat Neal, president; Lynn Kirkpatrick, vice president; Cynthia Chandler, social-AWS representative; Bottom row, left to right: Anita Bell, scholarship; Katie Upshaw, treasurer; Ellen Lewis, rush chairman; Margie Cope, secretary, not in picture.

What Is Panhellenic?

The word *Panhellenic* is derived from and interest and to plan the various Greek roots: "Pan" meaning all and "hellenic" meaning Greek. Panhellenic is thus an organization in which all Greek letter social sororities are represented nationally as well as on this campus.

To promote inter-sorority cooperation and to strengthen sorority-community relations as a whole, the thirteen social sororities at Texas Tech are member groups of the University Panhellenic Association.

UNIVERSITY PANHELLENIC COUNCIL

The governing body of the organization is the Panhellenic Council, composed of two representatives from each sorority. This council meets regularly to discuss questions of mutual concern activities and special events sponsored by Panhellenic throughout the year. Before action is taken on certain matters, the representatives have an opportunity to discuss questions with their chapter so that all sorority members have a voice in Panhellenic decisions.

The officers of University Panhellenic Council are ex-officio members of the council. The executive board meets bi-monthly to discuss plans and, in some cases, to make recommendations to the council for action, to coordinate the various activities of the association, and to conduct routine business matters. The officers serve as rush advisors and coordinate rush week.

Panhellenic officers are as follows:

President Pat Neal
Vice President Lynn Kirkpatrick
Secretary Margie Cope
Treasurer Katie Upshaw
Social
Activities/AWS.....Cynthia Chandler

Scholarship Chairman Anita Bell
Junior

Panhellenic Executive Nonya Pate
Rush Chairman Ellen Lewis

The following are the Panhellenic delegates: Julie Cates, Mary Ann McMahon, Linda Boon, Lorraine Leivens, Pam Christian, Kathy Hancock, Carol Ustry, Rosie Seale, Nancy Douglass, Anne Stout, Susan Ferris, Rosalyn Davis, and Leslie Daniel.

GREEK GUIDE

BID — an invitation to join a sorority.

FRATERNITY — although the name is applied to all Greek-letter organizations, it is more commonly used in referring to all men's Greek groups.

GREEK — the name applied to sorority and fraternity members.

INITIATION — the ceremony by which the pledge becomes a member.

LEGACY — a rushee whose grandmother, mother, or sister is an alumna or member of a certain sorority.

MEMBER — a woman who has met the pledge requirements of a sorority and has been initiated into the sorority.

PLEDGE — a student who has accepted the bid of a sorority and has participated in the pledge ceremony.

RIBBON-PLEDGING—a ceremony which precedes formal pledging. The pledge receives a ribbon of the sorority colors.

RUSH — the period set aside for the sororities to entertain rushees in an effort to get acquainted and to secure new members.

RUSH ADVISOR — a Panhellenic representative who is responsible for advising and aiding rushees.

RUSHEE — a woman who is indicating her interest in membership in a sorority by participating in rush.

SORORITY — a group of university women who have chosen to establish a close affiliation with one another.

SORORITY RECOMMENDATION — a personal reference from an alumna of a particular sorority. (Each sorority is responsible for obtaining these recommendations.)

SPIKING — a persistent persuasion on the part of a sorority or sorority member to secure from a rushee some commitment of preference for that group.

WHAT ARE SORORITIES?

ACTIVE CHAPTERS

A sorority is an organization whose members have elected to establish a close affiliation and friendship with one another. Each sorority has a similar purpose—to offer an opportunity for close friendship and to teach its members leadership through the experience of working with others on common goals and projects. Mutual interest in education, college activities, and in each other binds the group together. Every sorority encourages and expects above average scholarship. Each encourages participation in varied activities which in turn offer unlimited and valuable experience.

Sororities promote lifetime friendships that are maintained after college in alumnae groups and chapters. The affiliation with a national organization gives chapter members a meaningful concept of their responsibility as individuals in a group.

ALUMNAE GROUPS

Upon leaving college, initiated members of the sorority become alumnae and are eligible for membership in alumnae organizations. Each of these groups participates in a wide range of philanthropic and educational projects sponsored by its national organization and in addition gives support to local community programs.

HOW DO SORORITIES CHOOSE THEIR MEMBERS?

Before a sorority asks you to pledge, the members want to be sure that you will be happy in their group and that they, in turn, will enjoy working with you. It is important for the sorority members to meet you and to see you as you really are. Formal rushing has been planned with this idea in mind. At the parties, sorority members will decide whether they think you will be a congenial member of their group.

Naturally, you want to make a "good impression" and you will dress carefully, as will the girls whom you are going to meet. But do not think your appearance is all that counts. *Your high school record of activities and scholarship is carefully considered by a sorority in determining your potential as a member.* These are, after all, fairly dependable indications of your future achievements at Texas Tech.

Each sorority is limited in its total membership and its total number of pledges each year. The number of pledges allowed each chapter is determined each year by the number of young women interested in sorority membership. Each sorority was able to pledge a maximum of thirty-five women during the last formal rush period.

HOW DO YOU CHOOSE A SORORITY?

You should choose a sorority in exactly the same way you would choose any group of friends. It should be a decision based upon mutual interests and friendship.

During rush you will have many opportunities to talk with sorority women. They will be looking at you as a potential friend and you will be looking at them in the same manner. Act, then, as if you were with a group of your

friends and talk about things which really interest you. Do not be afraid to ask questions about their sorority activities and finances. Sorority members will be happy to talk with you about them.

Do not set your heart on one group alone. It is best to know several groups. Remember to look for the heart of the sorority—its members. The ones you choose as sorority sisters will be your close friends for four years of college and for years afterwards. Every group is worthwhile and has much to offer.

Make up your own mind about joining a sorority. Do not be influenced by the opinion of your associates and relatives. You alone are affected by this decision. The essential thing is to choose a group of women with whom you will be congenial.

FINANCES

One of the important considerations in deciding to pledge a sorority must be whether or not you would be able to meet your financial responsibilities. The financial requirements for the pledges and members of all sororities at Texas Tech are similar. Check your pocketbook and consider carefully the expenses of being a sorority pledge and member.

If you can afford to pledge a sorority, the extra expense is repaid a thousand-fold in companionship and sisterhood. Be sure you want to assume this obligation before choosing a group and pledging it.

RANGE OF SORORITY EXPENSES — 1970-1971

<i>Pledge's Financial Obligation</i>	\$200.00-235.00
which consists of:	
Pledge Fee (paid at time of pledging)	\$10.00-28.00
Monthly Pledge Dues (paid	

during pledgeship)	\$15.00-20.00
Initiation Fee (paid at time of initiation)	\$40.00-105.00
Badge (some included in initiation costs)	\$4.50 and up
<i>Members' Yearly Financial Obligation</i>	\$126.00-166.00
Monthly members' dues (paid after initiation)	\$14.00-18.50

Most groups have a building fund fee ranging from \$50.00 to \$100.00. This total amount may be in addition to the above standard fees or included in monthly dues. Other items which may or may not be included in dues are the following:

- 1) personal insignia jewelry
- 2) composite pictures
- 3) favors for dinner dances
- 4) retreats
- 5) life membership fees
- 6) additional national fees

The preceding figures represent the amount which must be met by each pledge and each member. Aside from these, any additional cost is up to the individual. Some of the extra things that should be considered are sweat-shirts, blazers, windbreakers, Big and Little Sister presents, and costumes for rush.

All sororities receive financial supervision from experienced alumnae and employed accountants. The financial advisors of the chapter welcome consultation with parents at any time.

FORMAL RUSH

LIVING ACCOMMODATIONS FOR RUSH WEEK

Rushees will be housed in the rooms to which they have been assigned for the fall semester. The Housing Office will notify you of your room assignment by mail. Lubbock rushees who

will not be living on campus during the fall semester will be housed at no extra room cost in Robby's Dorm for Rush Week. However, a meal ticket must be purchased. Assignments to rooms in Robby's will be made at rush registration.

The Tech Union will open at 10 a.m. Saturday, August 22, for registration. *You are to go FIRST to the Union in order to begin rush registration with Panhellenic.* After you have completed registration at the Union, you will move into your residence hall. You must register and move into the dorms between 10 A.M. and 2:30 P.M. Saturday, August 22, 1970.

Meals will be served by the regular dorm cafeterias beginning with Wednesday breakfast, August 26, 1970.

Closing hours for the residence halls will be announced during Membership Selection Week. Each rushee is responsible for signing in and out of the hall. Rule infractions will be transferred to your fall semester record.

Panhellenic expects all rushees to be neat, orderly, and quiet in their rooms, and to be courteous and cooperative with those in charge of the residence halls and with the people administering the program.

TRANSPORTATION

Each rushee is responsible for her own transportation to and from the parties. Neither sorority members nor alumnae are allowed to transport rushees. If an emergency arises, call the Panhellenic Office, and a Panhellenic person will be sent.

IMPORTANT TIPS FOR RUSHEES

1. Fill out the Rush Registration Form, 13 information blanks, and grade information slips and return them to the Director of Student Activities, 171 Ad Building, Texas Tech, Lubbock, Texas 79409 by JULY 20, 1970.

2. Rush registration fee of \$17.00 must be paid in one check made payable to Texas Tech University Panhellenic Association. Your registration for rush will not be complete until all fees are paid, and information blanks, registration and grade forms, and pictures are received. Only registrations that are complete and postmarked before midnight, July 20, 1970, will be accepted (*No exceptions will be made to this policy.*)

3. If you find you must cancel your rush registration, you must notify the Office of the Director of Student Activities. Your fee of \$17.00 will be refunded if you cancel by July 20. No exceptions to this policy will be made. *Academic ineligibility after July 20 forfeits both the registration and room fees.*

4. The University Panhellenic Advisor's office is permanently located in the Office of the Assistant Dean of Students for Programs; however during rush, all activity and business will take place in a temporary Panhellenic Office.

5. You may send checks or money orders, but please do not send cash through the mail.

6. It is recommended that registration be completed as soon as you receive the material from the Panhellenic Office.

You may register by mail or in person. Only registrations that are complete and postmarked before midnight July 20, 1970, will be accepted.

A written excuse must accompany any packet received past the deadline date. These excuses will be reviewed by a board who will determine if the girls could go through rush. The board will meet up to and until Friday, July 24 at 5:00 to review all unusual cases which have been referred to them up to this time.

If you do not get a card from Panhellenic confirming receipt of rush registration, notify the Office of the Director of Student Activities.

MEMBERSHIP SELECTION WEEK SCHEDULE

(A complete schedule with exact times and places will be given rushees at registration.)

Parties for Period I are held in various locations on the campus. Parties II, III, IV, and V will be held in private homes in Lubbock or in sorority lodges.

Saturday, August 22

10:00 A.M.-2:30 P.M.—Registration in the Student Union and move into rooms.

3:00 P.M. and 6:30 P.M. — Rushee Convocation and Panhellenic co-operative party. Silence begins.

Sunday, August 23

PERIOD I

Party duration — 30 minutes. You must attend each party. There are eight parties beginning at 9:30 A.M.

Monday, August 24

PERIOD I CONTINUED

Five parties beginning at 9:30 A.M. There will be a break for lunch.

Tuesday, August 25

PERIOD II

Party duration — 45 minutes. You must accept all invitations to a maximum of eight. 7:00-10:00 A.M. — Pick up invitations. Eight parties beginning at 10:30 A.M.

Wednesday, August 26

PERIOD III

Party duration — 45 minutes. You must accept all invitations to a maximum of five.

2:30 P.M. — Pick up invitations. Five parties beginning at 5:30 P.M.

Thursday, August 27

PERIOD IV

Party duration — 1 hour. You must accept all invitations to a maximum of three. 3:00 P.M. — Pick up invitations. Three parties beginning at 6:00 P.M.

Friday, August 28

PERIOD V

Party duration — 1½ hours. You must accept all invitations to a maxi-

mum of two. 3:00 P.M. — Pick up invitations. Two parties beginning at 6:30 P.M.

10:30 P.M.—rushees sign preference cards.

Saturday, August 29

Free time. — Rushees are still on silence. Activities are planned for those who want to participate.

Sunday, August 30

2:00 P.M. — Rushees pick up their bids and meet their sorority at a designated place.

WHAT TO WEAR—WHEN

One of the most important things to remember when planning what to wear is the warm climate of Lubbock. Simplicity and practicality are the key rules in campus wear. You need not bring special clothes to rush, for those you choose from your college wardrobe will be suitable. Be comfortable and well groomed.

Tech coeds do not wear shorts or jeans in the Tech Union nor in academic buildings. This applies to rush as well, including registration. Curlers will not be allowed in the Tech Union.

Period I — Wear lightweight casual clothes, low shoes, and hose. (Shoes should be comfortable for walking.)

Period II — Wear lightweight casual clothes, low shoes, and hose.

Period III — Wear lightweight casual clothes, low shoes, and hose.

Period IV — Wear church clothes, heels, and hose.

Period V — Wear an after-five dress, hose, and heels.

Be natural and be yourself at rush parties! Good manners are important equipment for making favorable impressions, and they help express your personality. Talk about any subject that interests you, and don't be afraid to ask questions. Be a good listener, also. Don't be "snowed" by the parties: just remember the girls that you meet.

SUMMER RUSH

The University Panhellenic Association of Texas Tech University has adopted the policy of not participating in any form of summer rush. This prohibits any Tech sorority girl and any potential rushee from participating in or attending any function given by only one fraternity prior to Formal Rush Week.

Violations of this rule should be reported in writing to the Panhellenic Advisor within two weeks of the incident. Mark "personal" on the envelope. These matters will be taken up at the first meeting of the Judiciary Committee of Panhellenic.

OPEN RUSH

The period of Open Rush begins immediately after formal rush if any sorority is eligible to participate. A girl may indicate her interest in participating in Open Rush in the Office of the Panhellenic Advisor, Rm. 171, Ad Building.

RULES GOVERNING FORMAL RUSH WEEK

Rules have an important purpose in rushing. When the University Panhellenic Council makes the rules for rushing, it tries to give all rushees and sororities equal consideration. Rushing is really not mysterious when you understand its regulations and purpose. Much careful organization goes into creating a rushing schedule that gives all concerned a fair opportunity to reach necessary decisions. Follow the rules, stay relaxed, and make the most of rushing experiences.

I. Eligibility of Rushees

Rushees must be regularly enrolled or in the process of enrolling in Texas Tech University for 12 or more hours in order to be eligible to participate in any rushing program. Rushees entering from high school must have

at least a "C" high school average to be eligible. (It is recommended this be at least a high "C" average.) Any rushee previously enrolled in any college, including summer school, must have at least a "C" overall average and a "C" average the previous semester prior to pledging in which she was enrolled in order to be eligible for rushing. Semester prior to pledging shall be interpreted as the fall or spring semester or the complete schedule of summer school work. All rushees are responsible to see that their transcripts have been received by the Registrar's Office of Texas Tech before the day rush begins. Complete the Grade Information Form enclosed with other material.

II. Membership Selection Rules

1. Rush Week is defined as beginning at 10 A.M., Saturday, August 22, 1970, and ending with receiving of bids Sunday, August 30, 1970. Silence begins at 3 P.M., August 22, 1970, when convocation is held.

2. Upon arrival in Lubbock, a rushee is not to go to the home of sorority members or be with anyone connected with a sorority other than members of her immediate family.

3. Rushees shall not grant interviews to the press nor pose for photographers during Membership Selection Week unless arrangements have been made with University Panhellenic and the Office of Director of Student Activities.

4. Emergency telephone calls will be taken care of through the dorm counselor.

5. A rushee must arrive and leave all rush parties at the hour specified in the invitation.

6. If a rushee gets lost trying to find a party, she should notify the Panhellenic Office so that they may notify the sorority that she will be late. Do not cut a party just because you'll be late. The sorority will understand and will want you to come.

7. Under no circumstances should a rushee call a sorority house for any

reason during Rush Week. Should the rushee confuse the times, or the places, or her parties, or becomes ill, she should notify the Panhellenic Office, which will notify the sorority.

8. Should a rushee be forced or wish to discontinue rush at any time, she must contact the Panhellenic Office.

9. If a rushee cannot attend a party due to illness, she must not notify the chapter herself. *A rushee must attend every party whose invitation she has accepted.* Cutting a party without the permission of the Panhellenic Office may result in the forfeiture of the remainder of rush.

10. Panhellenic name tags will be issued to the rushee at Rush Convocation to be worn on all occasions. A rushee is responsible for her name tag throughout Rush Week.

11. Rushees are required to bring rush rules booklet, pencil, and a schedule of all accepted parties to all convocations.

12. There is to be no smoking at any of the rush parties.

13. Rushees are subject to the penalty of deferred pledging for one semester for violation of rush rules.

14. A rushee must pick up her own invitations; she may *not* send someone to pick them up for her. If a rushee doesn't pick up her invitations, Panhellenic will assume that she has withdrawn from rush.

III. Counseling During Rush

Counseling is one of Panhellenic's major functions during Rush Week. Panhellenic offers rushees counseling on personal as well as technical aspects of rushing. There will be a rush advisor living in the dorm during Rush Week. She will be available for counseling at all times. Each rushee will also be assigned a rush advisor who will be available in the dorm at the designated times to be set at registration.

If a rushee desires to discontinue rush by regretting all of her invitations, she

is urged to take advantage of Panhellenic Counseling available at the post office before making a final decision.

Counseling will be provided in the following places:

1. Panhellenic Rush Office, Drane Hall

2. In dormitories, at designated times and places

IV. Silence During Formal Rush

Silence is a time when all rushees are asked not to converse with people other than the rush advisors except at the parties. The reason for this is that Panhellenic does not want a rushee's choice of a sorority to be the result of outside influence. Women are much happier in a sorority which they themselves have chosen rather than a group which parents, men, and other friends encourage them to join. A rushee must not discuss sorority membership with another rushee since this must be an individual decision. A rushee is allowed, however, to associate with rushees during Rush Week.

1. The period of silence begins with Convocation (*which every rushee must attend*) on Saturday, August 22, 1970, at 3:00 P.M., and ends with the acceptance of a formal bid on Sunday, August 30. *Rushees may not receive guests in the hall during the period of silence.*

2. There shall be no contact or conversation between a rushee and sorority member, pledge, or alumna except at the specified rush parties. You may say hello.

3. Sororities are bound by silence and may not deliver letters, telephone calls, or telegrams to rushees at any time, nor may they enter a rushee's room during the period of silence.

4. No sorority woman (active or pledge) may be present in a room where any rushee resides (and vice versa) during formal rush week, unless she is a resident of that room during Rush Week.

5. A rushee who is the roommate of a sorority member will naturally be in contact with her, but they *must not discuss sororities or rush.*

6. You may not receive *any* mail, phone calls, or visitors. Emergency packages and messages may be checked through the Panhellenic Office and then be given to rushees.

7. Emergency telephone calls will be taken care of through residence rush advisors and hall counselors. Request that your family and friends not insist upon talking with you during rush for you are the one who is penalized.

8. There is no contact whatsoever with men, family, or friends during Membership Selection Week. The rushee may not leave the city of Lubbock to go home or for any other reason.

9. Breaking of Silence before Membership Selection Week is over will result in appearance before the Panhellenic Judiciary Committee and possible removal from rush.

V. Illegal Rushing

1. Oral invitations to parties or to join a sorority are absolutely forbidden and are not valid during formal rushing.

2. By mutual agreement there shall be no "spiking" at any time. (See definitions.)

3. Sorority members shall make no statements to rushees or to others giving their idea of sorority ratings, for there is no such thing.

4. No gifts, flowers, or favors can be given to rushees with the exception of Period V parties. The rushee is to

Rush Registration Instruction

Have you followed these steps in preparing your rush registration materials? DEADLINE—JULY 20, 1970.

1. One check for \$17 payable to Texas Tech University Panhellenic for your registration and room and fee.

2. Thirteen white Information Blanks, legibly filled in.

3. Fourteen billfold pictures of yourself.

4. White Master Rush Registration Form completed.

5. Grade Information Form filled in.

6. Fall Housing Information Slip.

7. Place check, housing information for Fall Rush Registration Form, thirteen Information Blanks and fourteen pictures, and Grade Information Form in one envelope and mail to Office of the Director of Student Activities, Panhellenic Advisor, 171 Ad Building, Texas Tech University postmarked no later than July 20, 1970.

8. Do you know your eligibility? If you have attended college any place at any time, this affects your rushing eligibility. You must have a "C" average for any previous college work. You must also have a "C" average for the preceding regular semester of college if you were enrolled during a regular academic year or the complete schedule of summer school work. If you are entering directly from high school, you must have a minimum "C" average for all high school course work. You cannot have been a member of an NPC sorority at Texas Tech or elsewhere prior to this time. If you have pledged but were not initiated, a year must have lapsed since depledging or your pledgeship must have expired by the date you sign a preference card.

take nothing from any of the parties with the exception of Period V.
VI. Penalties for Violations of Membership Selection Rules by Sororities

1. It is your responsibility to report any infractions of any rush rules within 48 hours of the occurrence. All penalties for violations of rush rules will be decided by the Judiciary Com-

mittee of University Panhellenic.

2. Rushees should remember that if a sorority member(s) issues oral invitations to attend rush parties during Rush Week or to join her group, or the sorority members violate any other rush rules, it is a breach of the sorority's honor, and *must* be reported by the rushee to Panhellenic.



Left to right: Donna Becker, president; Irene Stephenson, AWS representative; Sharyn Howard, rush chairman; Mary Stogdill, vice president.

Alpha Chi Omega

GAMMA RHO



Founded at DePauw University, October 15, 1885

Number of collegiate chapters — 111

Colors — Scarlet and olive green

Insignia — Lyre with black enamel scroll across strings bearing Greek letters

Flower — Scarlet carnation with smilax

Publication — "The Lyre"

Philanthropy — Aid to cerebral palsy patients through the Easter Seal Drive

Nickname — Alpha Chi

Outstanding events — Founder's Day Dinner, Formal Pledge Presentation, Dinner Dance, Chapter Retreat and Workshop, Pledge Retreat, Senior Farewell Banquet, Paddle Party, Alpha Chi Week in honor of new initiates, Homecoming Coffee, Dad's Day Tea, Faculty Tea, Kidnap Breakfast, Pledge Dinner, and Initiation Banquet

President — Donna Becker

Rush Chairman — Sharyn Howard

Alpha Delta Pi

EPSILON EPSILON



Founded at Macon, Georgia, May 15, 1851

Number of collegiate chapters—133

Colors — Azure-blue and white

Insignia — Twenty jewels outlining a black diamond-shaped pin on which are the clasped hands, stars, and Greek letters Alpha Delta Pi

Flower — Violet

Publication — "The Adelphean"

Philanthropy — National Aid to crippled children and adults, 1851 Memorial Fellowship Fund, Wesleyan College Scholarship, Abigail Davis Student Loan Fund

Nickname — A D Pi

Outstanding events — Chapter and Pledge Retreats, Fall Presentation of the pledges, Faculty Tea, Pledge Project, Chapter Christmas Party, Homecoming Coffee, Dad's Day Open House, Scholarship Banquets, Founder's Day Banquet, Kidnap Breakfast, Initiation Banquet, Chapter Class Dinner, Senior Luncheon, Dinner Dance, Party in honor of Big Sisters, Alpha Delta Pi Week in honor of the initiates, Alpha Delta Pi State and National Convention, Culver Conference, Fraternity Mixers, and Pi Guys (men honored by Alpha Delta Pi)

President — Linda Russell

Rush Chairman — Mary Ann McMahan



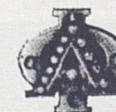
Left to right: Linda Russell, president; Barbara Ramsey, pledge trainer; Sharon Owen, AWS representative; Mary Ann McMahan, rush chairman.



Left to right: Janet Eickborn, AWS representative; Nancy Eubanks, pledge trainer; Pam Bryan, rush chairman; Karen Bridges, president.

Alpha Phi

GAMMA IOTA



Founded at Syracuse University, October 10, 1872

Number of collegiate chapters — 100

Colors — Silver and bordeaux

Insignia — Plain gold monogram of the two Greek letters with the letters "AEO" in black

Flowers — Lily-of-the-valley and forget-me-nots

Publication — "The Alpha Phi Quarterly"

Philanthropy — Cardiac Aid Foundation

Nickname — A Phi

Outstanding events — Fall Retreat, Presentation Dance, Formal Dinner Dance, Paddle Party, Scholarship Banquet, Alumnae Christmas Party, Kidnap Breakfast, Inspiration Week for initiates, Founders' Day Banquet, Work with Cardiac Aid during Heart Week

President — Karen Bridges

Rush Chairman — Pam Bryan

Chi Omega

KAPPA ZETA



Founded at the University of Arkansas, April 5, 1895

Number of collegiate chapters — 152

Colors — Cardinal and straw

Insignia — Fourteen white stones, either pearls or diamonds, arranged in the X (Chi) which is placed on the Greek letter Omega, raised slightly. Greek letters are written across the top. On the sides are the owl and the skull and cross-bones.

Flower — White carnation

Publication — "Eleusis"

Philanthropy — Muscular dystrophy

Nickname — Chi O

Outstanding events — Spring and Fall Eleusinian Festivals, Presentation, Paddle Party, Dinner Dance, Chapter Retreat, Pledge Retreat, Scholarship Banquets, Kidnap Breakfast, Homecoming Coffee, Faculty Banquet, Christmas Party for Orphans, Big-Little Sister Dinner, State Day, biennial State and National Conventions

President — Sharon Anderson

Rush Chairman — Cathey Dykes



Left to right: Patty Amerman, AWS representative; Peggy Guttery, pledge trainer; Cathey Dykes, rush chairman; Sharon Anderson, president.



Left to right: Loretta Albright, president; Beverly Johnstone, AWS representative; Barbara Specht, pledge trainer; Carol Ann Buchanan, rush chairman.

Delta Delta Delta

PHI ETA



Founded Thanksgiving Eve, 1888, at Boston University

Number of collegiate chapters — 113

Colors — Silver, gold, and blue

Insignia — Three jeweled stars with a crescent of gold bearing three deltas

Flower — Pansy

Publication — "The Trident"

Philanthropy — Awards scholarships to American and Canadian women students

Nickname — Tri Delta

Outstanding events — Founders' Day Dinner, Delta Week in honor of new initiates, Annual Presentation Dance, Scholarship Banquet, Chapter Retreat, Pansy Breakfast

President — Loretta Albright

Rush Chairman — Carol Ann Buchanan

Delta Gamma

GAMMA XI



Founded at Lewis School, Oxford, Mississippi, December, 1873
 Number of collegiate chapters — 94
 Colors — Bronze, pink, and blue
 Insignia — Anchor with white shield bearing Greek letters
 Flower — Cream rose
 Publication — "The Anchora"
 Philanthropy — Sight Conservation and Aid to the Blind
 Nickname — DG
 Outstanding events — Pinafore Dinner Dance, Fall Presentation, Paddle Party, Fall Retreat, Anchor Week in honor of new initiates, Pillow Party, Boat Sailing Party, Founders' Day Banquet, Alumnae Christmas Party for the Blind, Scholarship Dinner, Fraternity Mixers
 President — Nancy Craig
 Rush Chairman — Linda Young



Left to right: Nancy Craig, president; Sandra Scoggins, pledge trainer; Barbara Horsman, AWS representative; Linda Young, rush chairman.



Left to right: Jackie Phillips, AWS representative; Becky Lacy, pledge trainer; Jan Markham, president; Sharon McIntyre, rush chairman.

Gamma Phi Beta

BETA TAU



Founded at Syracuse University, New York, November 11, 1874
 Number of collegiate chapters — 91
 Colors — Mode and brown
 Insignia — The Greek letters enclosed in a black enameled crescent
 Flower — Pink carnation
 Publication — "The Crescent"
 Philanthropy — Own and operate two summer camps for underprivileged girls at Vancouver, B.C., and Indian Hill, Colorado and scholarships
 Nickname — Gamma Phi
 Outstanding events — Founders' Day Banquet, Pledge Retreat, Fall Presentation, Spring Dinner Dance, Retreat, Paddle Party, Beta Tau Birthday Party, Senior Breakfast, Homecoming and Dad's Day Teas, Surprise Breakfast, and Fraternity Mixers
 President — Jan Markham
 Rush Chairman — Sharon McIntyre

Kappa Alpha Theta

GAMMA PHI



Founded at DePauw University, January 27, 1870

Number of collegiate chapters — 94

Colors — Black and gold

Insignia — Kite-shaped, gold border, black enamel shield and a white chevron on which are inscribed the Greek letters

Flower — Black and gold pansy

Philanthropy — Through Kappa Alpha Theta Foundation: aid to Institute of Logopedics (speech correction), scholarships, DePauw Memorial Library; also Foster Parents Plan, Inc.

Publication — "Kappa Alpha Theta"

Nickname — Theta

Outstanding events — Pledge Retreat, Chapter Retreat, Pledge Presentation, Christmas Party, Homecoming Reception, Surprise Breakfast, Kite Flight, Big Sister-Little Sister Party, Founder's Day Banquet, Spring Dinner Dance, Scholarship Banquet, Fraternity Mixers

President — Elizabeth Cavin

Rush Chairman — Rosie Seal



Top row, left to right: Rosemary Seale, rush chairman; Ginger Wheat, AWS representative; Bottom row, left to right: Gay Shamblin, 1st vice president; Elizabeth Cavin, president.



Left to right: Cindy Willoughby, president; Marcia Moran, pledge trainer; Judy Ellis, AWS representative; Nancy Langley, rush chairman.

Kappa Kappa Gamma

DELTA PSI



Founded at Monmouth College, October 13, 1870

Number of collegiate chapters — 96

Colors — Dark and light blue

Insignia — Golden Key

Flower — Fleur-de-lis

Publication — "The Key"

Philanthropy — Rehabilitation services for crippled children and adults

Nickname — Kappa

Outstanding events — Chapter Retreat, Pledge-Active Picnic, Fall Presentation, Pledge Peppermint Party, Biennial Spring Dinner Dance, Scholarship Banquet, Monmouth-Duo, Biennial Santa Fe Retreat

President — Cindy Willoughby

Membership Chairman — Nancy Langley

Phi Mu

ALPHA CHI



Founded at Wesleyan College, Macon, Georgia, March 4, 1852

Number of collegiate chapters — 115

Colors — Rose and White

Insignia — Shield of black overlayed on a shield of gold; black shield bears Greek letters and three stars

Flower — Rose enchantrees carnation

Publication — "The Aglaia"

Philanthropy — Project Ship HOPE

Outstanding events — Pledge Presentation, Little Sis-Kidnap Breakfast, Retreat, Dinner Dance, Founders' Day Banquet, Paddle Party, Date Nights, Scholarship Dinner, Spring Picnic, Inspiration Week, Hope Week, Christmas Caroling and Party, Phi Mu State Day, Phi Mu National Convention, Homecoming and Dad's Day Tea, Pledge Castle Party, Philomathian Hours, Mock Election, Fraternity Mixers

President — Margaret Timmins

Membership Chairman — Ann Strawhorn



Left to right: Ann Strawhorn, rush chairman; Cathy Brown, AWS representative; Lou LeBourveau, pledge trainer; Margaret Timmins, president.



Left to right: Susan Cathey, rush chairman; Patty McFarland, president; Sue Ratliff, AWS representative; Susan Edwards, pledge trainer.

Pi Beta Phi

TEXAS GAMMA



Founded at Monmouth College, April 28, 1867

Number of collegiate chapters — 113

Colors — Wine and silver blue

Insignia — Golden Arrow with Greek letters inscribed on feathers

Publication — "The Arrow"

Philanthropy — Founding and Maintenance of the Pi Beta Phi Settlement School in Gatlinburg, Tennessee.

Nickname — Pi Phi

Outstanding events — Fall Chapter Retreat, Pledge Retreat, Presentation, Dinner Dance, Biennial Santa Fe Retreat, Founders' Day Banquet, Arrow Art Mart, Monmouth Duel (Fraternity Game Competition), Senior Farewell

President — Patty McFarland

Rush Chairman — Susan Cathey

Sigma Kappa

GAMMA IOTA



Founded at Colby College, November 9, 1874

Number of collegiate chapters — 115

Colors — Maroon and lavender

Insignia — Gold triangle supporting a raised triangle of maroon enamel bearing the Greek letters in gold

Flower — Violet

Publication — "The Sigma Kappa Triangle"

Philanthropy — The Maine Sea Coast Mission; National Gerontology Program; American Girls' Greek School, Salonika, Greece

Nickname — Sigma

Outstanding events — Founders' Day Banquet, Big-Little Sister Party, Fall and Spring Retreats, Pledge Levi Party, Paddle Party, Presentation Dance, Inspiration Week, Sigma Dad of the Year, Dinner Dance, Fall and Spring Scholarship Banquets

President — Laurie Nelson

Rush Chairman — Dinah Salyars



Left to right: Dinah Salyars, rush chairman; Laurie Nelson, president; Sharon Ebanks, pledge trainer; Ellen Lewis, AWS representative.



Left to right: Brenda Hill, president; Jan Jones, AWS representative; Brenda Smith, pledge trainer; Karen McCulley, rush chairman.

Zeta Tau Alpha

GAMMA TAU



Founded at Longwood College, Farmville, Virginia, October 15, 1898

Number of collegiate chapters — 110

Colors — Steel gray and turquoise blue

Insignia — Shield of black enamel superimposed on a shield of gold; black shield bears five-pointed crown and Greek letters

Flower — White violet

Publication — "Themis"

Philanthropy — National Society of Crippled Children

Nickname — Zeta

Outstanding events — Presentation of Pledges, Homecoming Reception, Founders' Day Banquet, Retreat, Scholarship Recognition Service, Easter Party for Underprivileged Children, ZTA-Sigma Chi Soap Fight, Zeta Week in honor of new initiates, Paddle Party, White Violet Breakfast, Dinner Dance, Senior Farewell Banquet

President — Brenda Hill

Membership Chairman — Karen McCulley

Appendix

Constitution of the Association of Women Students

ARTICLE I Name

SECTION 1. The name of this organization shall be the Association of Women Students of Texas Technological College.

ARTICLE II Objectives

SECTION 1. The objectives of the Association of Women Students shall be:

1. To promote and maintain the highest cultural, educational, and social standards of collegiate life in all women's activities on campus by providing, for the purpose of mutual help and benefit, open discussion of matters affecting college women; by devising, administering, and by acting as a coordinating body of all the women's organizations on campus in setting the standards of living and working together on the campus.
2. To develop leadership, school spirit, and the sense of individual responsibility among the women students by encouraging participation in student government and college activities, and in so doing develop a strong student government and a mutual understanding between the administration and the students.
3. To promote high scholarship among the women students at Texas Tech.
4. To strengthen the spirit of unity and fellowship among the women students and to encourage closer relationships between town girls and the girls on campus.

SECTION 2. The Association of Women Students shall operate under the powers set forth in this Constitution.

SECTION 3. Additional powers will be granted the council each year according to the progression and capability exhibited by the previous General Council and the Association.

ARTICLE III Members

SECTION 1. Every woman student enrolled at Texas Tech shall be a member of the Association and shall pay dues when she registers for classes.

SECTION 2. A sponsor(s) shall be an ex-officio member of the organization. The sponsor(s) or her representative(s) shall act as an adviser to the Association.

ARTICLE IV Officers

SECTION 1. The following officers shall serve as the executive body of the Association and General Council.

SECTION 2. Officers shall be:

1. President
2. First Vice President
3. Second Vice President
4. Third Vice President
5. Secretary
6. Treasurer
7. Intercollegiate Association of Women Students Contact

SECTION 3. Qualifications for officers:

1. They shall maintain a 2.5 overall grade point average for all the time they have

been in school and a 2.5 grade point average for the previous semester at Tech.

2. The president shall have been a member of the AWS General Council or Executive Council for at least a year previous to the term she serves as president.

3. The first, second, and third vice-presidents and the IAWC contact shall have been a member of the AWS General Council for at least one semester previous to the term they serve as an officer. The third vice president must be in summer school or from the surrounding area the summer following her election.

4. The president, vice presidents, secretary, treasurer, and IAWS contact shall be at least a junior at the beginning of their term of office.

SECTION 4. Elections

1. The officers shall be elected during the spring semester by the women students of the college.

2. The term of office for officers and representatives to the AWS General Council shall be one school year.

3. In case the office of president is left vacant, the first vice president shall become president and a new vice president shall be nominated and elected by the General Council. If for any reason a vacancy occurs in any of the other elected offices, the General Council shall nominate and elect someone to fill the vacancy.

4. The second vice president shall serve as chairman of the nominating committee whose members shall be chosen from names submitted to the chairman of the committee with the approval of the Executive Council.

5. The nominating committee shall prepare a slate of officers to be presented at a nominating assembly where other nominations of qualified girls (those who have applied) may be made from the floor.

ARTICLE V Duties of Officers

SECTION 1. President

1. It shall be the duty of the president to preside at the meetings of the Association.
2. She shall exercise supervision over the activities of the Association and be alert to the needs of the campus.
3. She is also president of the AWS Council and presides over this governing body.
4. It shall be the duty of the president to see that the provisions of the Constitution are carried out.
5. She shall have the power to appoint the chairman of all AWS committees with the approval of the executive committee.
6. She shall act as ex-officio member of all committees.
7. She may call a meeting of the council or of the Association whenever necessary.

SECTION 2. First Vice President

1. She shall preside in the absence of the president.
2. She shall assist the president in the direction of the Association and the General Council and shall assume the duties of the president in case the office of the president is left open.

3. She shall serve as program chairman for the General Council.

SECTION 3. Second Vice President

1. She shall plan and supervise the AWS Orientation Program for new women students.

2. She shall supervise the AWS elections and be chairman of the nominating committee.

SECTION 4. Third Vice President

1. She shall be in charge of and supervise AWS activities during the summer.

2. She shall compile, address, and mail TECH TIPS to all entering freshmen women and transfer women students.

SECTION 5. Secretary

1. She shall keep the records of the actions and meetings of the Association and the General Council.

2. She shall take care of all General Council correspondence.

3. She shall file and preserve all reports and papers of the Association and General Council.

4. She shall publicize all activities of AWS.

SECTION 6. Treasurer

1. She shall collect all funds and fines for lack of attendance and care for all bills authorized by the sponsor.

2. She shall have charge of the Association funds.

3. She shall keep a strict and permanent record of all expenses.

4. She shall make a financial report annually and present a proposed budget for the following year. She shall act as ex-officio member of all committees involving finance.

SECTION 7. IAWS Contact

1. She shall be in charge of the clearing house at Tech and she shall take care of all correspondence with member schools of IAWS.

SECTION 8. AWS Representative

1. The AWS representative from an organization shall serve as a liaison between her organization and the General Council.

ARTICLE VI General Council

SECTION 1. The purpose of the General Council shall be to serve as a legislative body for the Association and to act as a coordinator of all campus organizations engaged in by women students.

SECTION 2. The General Council shall consist of seven elected officers, one representa-

tive from the Freshman Class, and one from each of the recognized women's organizations on the Texas Tech campus; one vote shall be accorded each organization and officer.

SECTION 3. The General Council shall meet twice a month unless otherwise stated.

SECTION 4. Scholastic eligibility for the members of the General Council shall be a 2.0 over-all grade-point average, as well as a 2.0 grade-point average for the preceding semester.

SECTION 5. If it is impossible for a General Council member to attend a meeting, it is required that she send an alternate from her organization with a written excuse to the secretary, the validity of which will be determined by the Executive Council.

SECTION 6. If any organization is not represented by either the regular representative or an alternate, the organization will be notified and a fine of \$1.00 shall be assessed and paid by the organization.

SECTION 7. Organizations which are not represented a total of three meetings during any one semester will be notified by the secretary of the Association that their representative is inactive, and they must send a new regular representative.

ARTICLE VII Committees

SECTION 1. There shall be a nominating committee, an Executive Council, standing committees, and other committees which the General Council may require. Each committee shall have a chairman who is appointed by the Executive Council, and the members of the committees shall be selected by the chairman with the approval of the Executive Council.

SECTION 2. Standing Committees:

1. Dad's Day Committee
2. Women's Day Committee
3. President's Hostess
4. Howdy Party

ARTICLE VIII Amendments

SECTION 1. The constitution may be amended at a regular meeting of the General Council of the Association of Women Students provided that the amendments are approved and passed by a two-thirds majority of the total membership of the General Council and approved by the sponsor(s). The amendments shall have been read at the General Council meeting preceding the one at which the vote is taken.

Constitution of the Residence Hall Association, The Women's Residence Council

ARTICLE I Name

The name of this organization shall be the Women's Residence Association of Texas Technological College.

ARTICLE II Purposes

The purpose of the Women's Residence Association shall be:

1. To promote and maintain high standards in the residence halls with regard to scholarship, moral integrity and group living, and
2. To promote and develop responsible leadership and citizenship in the residence halls, on the campus at large and in the community.

ARTICLE III Powers

The Women's Residence Association shall operate under the powers and limitations set forth in this constitution.

ARTICLE IV Membership

The membership of the Women's Residence Association shall consist of all the residents of Texas Tech women's residence halls.

ARTICLE V Officers

SECTION 1. The officers of the Residence Hall Association shall be:

- a. President
- b. Vice President
- c. Secretary-treasurer
- d. Judiciary Chairman

SECTION 2. Duties of Officers

a. President:

1. Shall preside at all meetings of the Women's Residence Council and the Women's Residence Association.
2. Shall present periodic messages to W.R.C. concerning residence hall life, activities, standards, policy and government.
3. Shall appoint committees as provided in the W.R.C. constitution.
4. Shall execute all legislation passed by the W.R.C. for which she shall be responsible to W.R.C.
5. Shall act as liaison between the W.R.A., W.R.C. and campus organizations, the administration, the Housing Office and the community at large.
6. Shall be an ex officio member to all committees.

b. Vice President:

1. Shall preside in the absence of the president.
2. Shall serve as the W.R.C. parliamentarian.
3. Shall be responsible for the Women's Residence Association elections.
4. Shall be a member of the W.R.C. Executive Council.
5. Shall succeed to the presidency in case that office is vacated.

c. Secretary-treasurer

1. Shall take and keep the minutes of the W.R.A. and W.R.C. meetings.
2. Shall provide and distribute copies of minutes of all meetings to the members of W.R.C. and other residence hall personnel as directed by the president.
3. Shall serve on and attend all Financial Committee meetings.
4. Shall maintain a current record of all monies and make reports to W.R.C. as directed by the president.
5. Shall be a member of the W.R.C. Executive Council.
6. Shall be responsible for all correspondence of the W.R.A. and W.R.C.

d. Judiciary Chairman

1. Shall chair meetings of the hall Advisory Chairmen for the purpose of orientation and coordination between the hall Advisory Councils, the W.R.A., Judiciary Council and the W.R.C.
2. Shall attend all W.R.C. meetings.
3. Shall serve as the chairman of the Judiciary Council.
4. Shall serve as the W.R.C. representative to the Association of Women Students.

SECTION 3. Qualifications for Officers:

- a. The President and Vice President of the

Women's Residence Council shall be elected President and Vice President of the Women's Residence Association. They shall be of junior or senior standing during their term of office, and shall have served on W.R.C. for at least one year. They have a 2.5 overall grade point average and a 2.5 average for the semester preceding their election. They must maintain at least a 2.0 average during their term of office. They shall be hall residents at the time of their election and during their term of office.

- b. The Secretary-treasurer and the Judiciary Chairman shall have served one year as a member of W.R.C. or on a hall legislature or of a residence hall advisory council previous to their term of office. The grade point average shall be the same as for the president and vice president.
- c. Other officers elected by W.R.C. will be from the Council membership and will have the same grade point average as required of other officers.

SECTION 4. Removal of Officers:

The President, Vice President, Secretary-treasurer and Judiciary Chairman may be removed from office by a 3/4 vote of the Women's Residence Council on the grounds of neglect, misconduct or excessive absence.

SECTION 5. Term of Office:

All officers shall serve a term of one year.

ARTICLE VI The Women's Residence Council

SECTION 1. The purpose of the Women's Residence Council shall be to serve as the primary channel for discussion among living groups, to initiate and/or approve all regulations and policies which are applicable to all women residents and to provide for the general welfare of the resident hall student.

SECTION 2. The Women's Residence Council shall be composed of the elected officers of the Women's Residence Association and the presidents and vice presidents of all the Texas Tech women's residence halls. Each member and officer with the exception of the president shall have one vote. Each member shall maintain the same grade point as required for officers.

ARTICLE VII The Judiciary Council

SECTION 1. The purpose of the Judiciary Council shall be:

- a. To interpret the regulations and policies of the Women's Residence Association, Women's Residence Council and the individual halls.
- b. To hear and rule on appeals referred to it by the hall's advisory councils or an individual student.
- c. To render advisory opinions when requested through regular established channels of the residence halls or University.

SECTION 2. The Judiciary Council shall be composed of the Chairman and one representative of each undergraduate class to be appointed by the Chairman with the advice and consent of the Women's Residence Council. The Judiciary Chairman of the Women's Residence Association shall serve as the chairman of the Judiciary Council.

SECTION 3. The procedures of the Judiciary Council shall be determined by the Council, put in written form and a copy prepared and delivered to each hall advisory council and to the Women's Residence Council.

- a. A secretary shall be chosen by the

Judiciary Council who shall keep the records of the council.

- b. Any decisions or interpretations by the Council shall be delivered to the residence hall advisory council chairman, the residence hall counselor and any person involved directly in the case within ten days.

ARTICLE VIII Advisor

The advisor of the Women's Residence Association and Women's Residence Council shall be a member of the Residence Hall Supervisory Staff for Women. She shall be elected in the spring by the retiring Women's Residence Council for the following year. The advisor shall be an ex officio member of the

Women's Residence Council and shall serve in an advisory capacity.

ARTICLE IX Amendments

Amendments to this constitution shall be ratified by a two-thirds vote of the Women's Residence Council and two-thirds of the women's hall legislatures. (Each hall having one vote on final ratification.)

ARTICLE X Ratification

This constitution shall be in force and effective immediately upon approval of nine of the Women's residence halls legislatures and a two-thirds vote of the Women's Residence Council.

Landmarks and Traditions of Texas Tech

The Double "T" Bench

The Double "T" Bench, located on the Administration Building Green, was donated by the Senior Class of 1931. Only upperclassmen are allowed to sit on this bench.

Memorial Circle

Memorial Circle, located in the center of the campus, was dedicated in 1948 by the Texas Tech War Veterans' Association to all whose service has brought honor to the University and the Country.

Will Rogers

"Riding into the Sunset" is the name of the statue of Will Rogers mounted on his horse, Soapsuds. The memorial, located on Soapsuds Pavilion, was presented to Texas Tech by the Amon G. Carter Foundation in 1948.

Jones Stadium

Clifford B. and Audrey Jones Stadium was dedicated on November 29, 1947, in honor of the past president of Texas Tech. The stadium has since been enlarged and now seats over 42,000 fans.

Southwest Conference Circle

The site of all Tech pep rallies and bonfires, the Southwest Conference Circle was furnished by the Saddle Tramps, Circle K, and Alpha Phi Omega. All conference schools are represented by mosaic tiles of each school's mascot.

The Red Raider, Our Mascot

The idea of the Red Raider galloping around the football field prior to Texas Tech games was conceived in 1954, and he made his first appearance at the Texas Tech-Auburn game in the Gator Bowl. The Red Raider traditionally rides a black horse.

The Victory Bells

The Victory Bells, located in the east tower of the Administration Building, were donated by the Class of 1936. The large bell weighs 900 pounds; the smaller, 300. They are rung for thirty minutes after every football or basketball victory.

"Banging Bertha" is the bell carried by Saddle Tramps to all football and basketball games. It was donated to the Tramps by the Santa Fe Railroad.