

1966 · 1967

TECH



TIPS

a handbook for women



THE ASSOCIATION OF WOMEN STUDENTS

of

TEXAS TECHNOLOGICAL COLLEGE

presents

## TECH TIPS

*A Handbook for Women Students*

1966 - 1967



AWS Editor ..... Marcia Hoffman

### CHAIRMEN

Residence Halls ..... Priscilla Dyer

Panhellenic ..... Margaret Griffith, Linda Groce



## Contents

DEAN'S LETTER .....	3
AWS EXECUTIVE COUNCIL .....	4
ASSOCIATION OF WOMEN STUDENTS .....	5
AWS AND YOU .....	6
President's Hostesses .....	10
Angel Flight .....	11
CorpsDettes .....	12
Major-Minor Club .....	13
Women's Service Organization .....	14
Town Girls Club .....	15
WOMEN'S RESIDENCE HALLS .....	17
Women's Residence Council .....	18
A Guide to Residence Hall Living .....	19
Clement Hall .....	25
Doak Hall .....	26
Drane Hall .....	27
Gates Hall .....	28
Horn Hall .....	29
Hulen Hall .....	30
Knapp Hall .....	31
Stangel Hall .....	32
Wall Hall .....	33
Weeks Hall .....	34
West Hall .....	35
HONORARIES .....	37
Alpha Lambda Delta .....	38
Junior Council .....	38
Mortar Board .....	39
Mu Phi Epsilon .....	39
Phi Gamma Nu .....	40
Phi Upsilon Omicron .....	40
Tau Beta Sigma .....	41
Theta Sigma Phi .....	41
COLLEGE PANHELLENIC .....	43
The Panhellenic Creed .....	44
An Introduction to College Panhellenic .....	45
What is Panhellenic? .....	46
Rush Registration Instruction .....	52
Alpha Chi Omega .....	54
Alpha Delta Pi .....	55
Alpha Phi .....	56
Chi Omega .....	57
Delta Delta Delta .....	58
Delta Gamma .....	59
Gamma Phi Beta .....	60
Kappa Alpha Theta .....	61
Kappa Kappa Gamma .....	62
Phi Mu .....	63
Pi Beta Phi .....	64
Sigma Kappa .....	65
Zeta Tau Alpha .....	66
APPENDIX .....	67
Constitution and By-Laws of AWS .....	67
AWS Activities Point System .....	69

## Introducing . . .



Hello there,

I am so happy that you are going to be with us this year. My office is in the Administration Building. I hope that you will drop by to see me and the members of my staff.

We are looking forward with a great deal of pleasure to knowing each one of you personally.

Sincerely,

Florence Phillips  
Dean of Women



## AWS Executive Council



*Top row, left to right: Carla Mathews, IAWS representative; Mary Lou Clement, treasurer; Marsha Meyers, judiciary chairman; Suzanne Crain, third vice president. Bottom row, left to right: Suzanne Hightower, second vice president; Genelyn Cannon, president; Sandra Harris, first vice president; Sherrell Andrews, Secretary.*

Dear Miss Techsan,

Welcome to Texas Tech on behalf of the Association of Women Students. You are extremely fortunate in having the privilege of attending one of the outstanding colleges in the United States. You will find dedicated teachers, trained counselors, cooperative administration, and friendly students who are ready and anxious at all times to guide and assist you in every way possible.

As a member of the 1966-67 student body, you will be a part of Tech's dynamic growth, share its spirit and enthusiasm, and take part in its many activities.

Each year of your college experience will provide you with countless wonderful experiences. You will create many lasting friendships, and you will increase your knowledge and your desire for knowledge. AWS was formed to serve you as you advance in these experiences. We hope that we may truly be of service to you in the coming year and that this year may be one of your happiest.

Genelyn Cannon  
President, AWS

# AWS





## AWS and You . . .

### A TECHSAN'S LIFE

College means a number of things to you. It means fun-times, work and recreation, plus new friendships and new ideas. You are in for an enriching experience. And you'll want to take advantage of all sides of college — mental, social, and spiritual.

Many individuals and organizations are eager to help you, especially AWS (Association of Women Students), WRC (Women's Residence Council), and Panhellenic Council.

The college campus offers so many avenues of activity that it is easy to lose sight of our primary objectives and become completely "wrapped up" in extra-curricular activities. So, remember, study comes first.

The student has few regulations outside of class hours, and must learn to budget her own time. A daily schedule allotting time for study and relaxation will be of valuable service, and you will gain real satisfaction, knowing that you have given the necessary time and effort to your studies.

A person with the ability to concentrate is well on the road to good study habits. Tips in developing this ability are: divide your study hours into short concentrated periods; keep your mind on your work; read rapidly; allot each piece of work a certain time and try to complete it in that time; work in surroundings conducive to concentration.

If you and your roommate study together in your room, it is wise to slip a "Do Not Disturb" sign over the door knob. As a freshman, 9:00 P.M. hours will help you to give the proper time to studies.

By practicing good study habits and reviewing thoroughly before exams, you send home the grade reports that will

make you and your parents proud. So study hard, then relax.

College is filled with things to do and people to meet. Dating, campus organizations, departmental clubs, dorm chatter, cokes in the Tech Union—all these are avenues of relaxation.

### A KEY TO CLOTHES

Now, what to wear—and when? Remember that simplicity is the key word to the Techsan's taste in clothing. For your convenience and easy access, note the Techsan Clothes Chart (Page 7).

Other incidentals are brunch coat or short house coat, slacks, bedroom slippers, cottons for fall and spring, and a heavy coat for winter. The weather in West Texas is windy and we usually have snow and rain, so bring overshoes and headscarves.

Be sure to bring a white dress, too. Each spring AWS sponsors Women's Day and all coeds wear white.

The Techsan woman wears just enough make-up to give her a "wide-awake" look at the 8 A.M. class, and always dresses to suit the occasion. To complete the picture, she conducts herself properly, remembering that she represents her college.

### THE GENTLE ART

Equally important to the Tech coed as being well-groomed and well-dressed are manners.

We have learned that one of the best ways to get a lot of introductions is to give a lot of them. In order to introduce and meet people with poise, you will need to practice the techniques. If you want to brush up on "how and when," here are some tips that may prove beneficial.

### A TECHSAN'S CLOTHING CHART

Event	Dress	Hat	Shoes	Handbag & Gloves
Classes	Skirts & sweaters, blouses; wool or cotton tailored dresses	Scarf, if needed	Loafers, flats	Handbag, gloves if needed for warmth
Town	Tailored dress suit or sweater & skirt	No	Low heels	Both
Dinner Date	Date dress	No	Heels	Both
Informal Dances	Tailored dress or sweater & skirt	No	Type optional	Small bag & gloves
Formal Dances	Long or short length formal, or after-five dress	No	Evening; heels, always with short formals	Evening bag & gloves
Banquets	Formal or dressy dress; depends on invitation	Optional; depends on type of dress	Heels	Both
Picnics	Knee length shorts; slacks, jeans, pedal-pushers, skirts & sweaters, culottes	Scarf if needed	Loafers	No, unless gloves are needed for warmth
Spectator Sports	Tailored clothes or school clothes	No	Heels or loafers, depending on dress	Optional
Cultural Events	Tailored suit or date dress	Optional	Heels	Both
Teas & Receptions	Dressy dress or suit	Yes	Heels	Both, remove gloves for refreshments
Church Services	Best daytime dress or suit	Yes	Heels	Both
Hall Cafeteria	Dress; skirt & sweater	No	Loafers, flats	No

Always mention the woman's name first if a man and a woman are being introduced. Men always rise for introductions. Women rise only when being introduced to an older woman, or when they wish to show special respect to a distinguished person. A woman may shake hands with a man, but must remember to extend her hand first.

When introducing a large group, mention names of men and women in the order they are seated or standing. In acknowledging an introduction, it is courteous to repeat the name and simply to say "Hello" or "How do you do." A smile can express your friendliness better than words.

Friendliness on our campus extends to the faculty and older people. You can't underestimate what your courtesy and kindness to all older people will do for you.

Remember, as you're packing for Texas Tech, put in a smile and a friendly spirit, and take them out first when you arrive.

### THE COMMON GROUND

One more phase of college deserves special mention — spiritual growth. Many religious groups, affiliated with Lubbock churches and located off-campus, offer worship, study, and fellowship. These are listed in the General Catalog under mutual interest organizations. You are invited to attend the group of your choice.

This phase of your growth is best expressed in the AWS Women's Creed—"that of charity toward others and service to all."

### AWS IS FOR YOU

When you enroll at Texas Tech, there is one organization of which you as a woman student automatically become a member. This is the Association of Women Students — known more simply as AWS.

The purpose of AWS is to help you and other Tech coeds to get the greatest benefits from college life by promoting



unity and fellowship among women students and by providing opportunities for leadership in worthwhile activities on campus. AWS acts as a coordinating body of all women's organizations in setting the standards for living and working together on campus.

## IAWS

Tech's AWS is a member of a large national association — the Intercollegiate Association of Women Students. Its membership is composed of women's governing units in over 100 colleges and universities from coast to coast. IAWS was the first to establish a national association of student governments. The foundation for this organization was laid in 1913, and Tech was the first college in Texas to become a member of IAWS.

The purposes of IAWS are to foster the exchange of ideas and information on subjects of mutual interest to the member schools; to encourage a growing awareness of the responsibilities of women students in local, national, and international affairs; and to work for the improvement of women's governing groups.

## AWS COUNCIL

Tech's AWS is governed by the AWS Council. This Council is composed of eight officers elected by the women on campus, one representative from each women's organization, and a representative from each class. The Executive Council, elected by the women students, is comprised of eight officers: president, first vice president, second vice president, third vice president, secretary, judiciary chairman, and IAWS representative. To understand exactly how AWS works, you are invited to attend any regularly scheduled Council meeting.

## THE JUDICIARY COUNCIL

The agency for interpreting AWS regulations and the activity point system is the AWS Judiciary Council. Cases referred by Advisory Council and those involving infractions of general college regulations are handled by the AWS Judiciary Council. The Council is composed of three students of junior or senior classification and one student from a residence hall Advisory Council. The Chairman of AWS Judiciary is an elected AWS officer.

## PLANNED ESPECIALLY FOR YOU

"Never a dull moment . . ." and so it is with AWS. Its ever-expanding activity program includes:

**BIG SISTER-LITTLE SISTER PROGRAM** — You will be adopted as a little sister long before you arrive on campus. Your big sister should write you during the summer and be here in the fall to help you get acquainted with campus life and to give you the benefits of her college experience.

**HOWDY PARTY** — This event is scheduled as a "get-acquainted" period during orientation week. All the women leaders on campus will be at this party to welcome you and tell you about extracurricular activities and women's organizations at Tech.

**DAD'S DAY** — During the fall Dads are honored by a full day of activities including the football game and a welcoming coffee. AWS Dad's Day Committee plans the program.

**PENNY - A - MINUTE NIGHT** — Here's your chance to stay out one hour past closing hours—at the rate of a penny a minute. AWS usually sponsors two such nights each year.

**WOMEN'S DAY** — As a recognition day for women on our campus during the spring, you are urged to wear white to commemorate this special day. Tech's Outstanding Woman of the Year and Faculty Woman of the Year are elected and presented at the Women's Day Banquet that night.

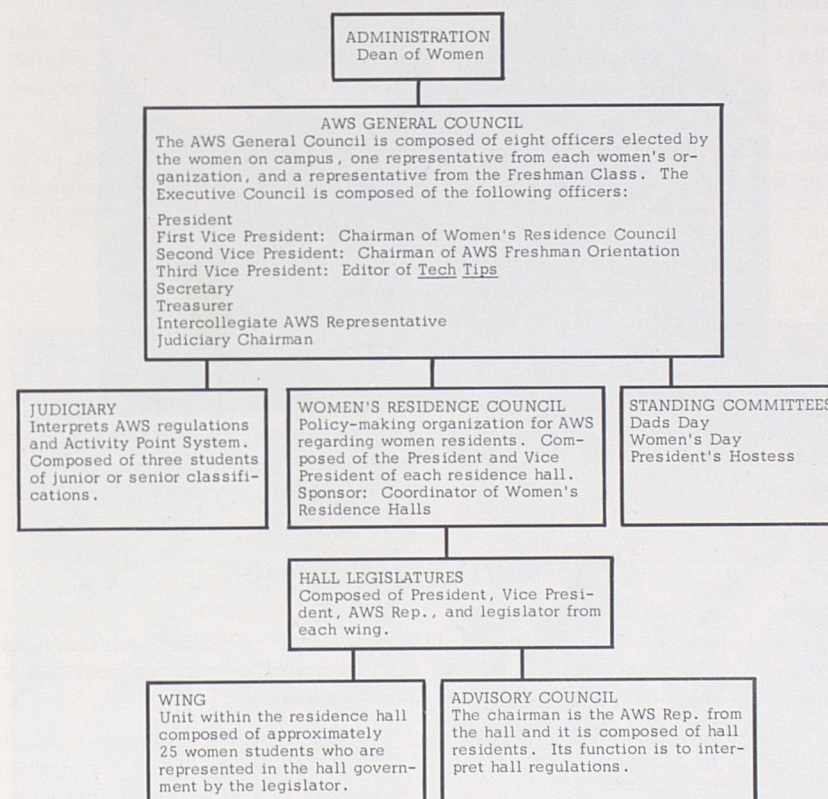
Other recognitions include installation of AWS officers for the coming year, introduction of the new officers and

legislators in the residence halls, and scholarship recognition.

## AWS ACTIVITY SYSTEM

In order to distribute the major offices and responsibilities of individual students more evenly, AWS has an activity point system (See Appendix). The system is based on time consumption rather than prestige.

## AWS ORGANIZATIONAL CHART







Left to right: Jane Edwards, chairman; Gretchen Strief, secretary.

## President's Hostesses

The 32 members of President's Hostesses serve as Texas Tech's official hostesses. They welcome visitors to the campus and assist with various administration functions, including the Board of Director's luncheon.

These upperclasswomen are chosen each year by the AWS Executive Council and sponsors, President Goodwin and Vice President Pennington.

Members are well informed about the campus and answer questions put to them by visitors and official guests.

One of the group's projects is publishing a Tech directory and general reference booklet.

## Angel Flight

The Texas Tech Angel Flight is a girls' drill team and social organization sponsored by the Air Force ROTC Arnold Air Society.

Angel Flight is a national organization designed to create and promote interest in the Air Force program, on and off campus. The Tech Angels participate in many campus activities such as the annual Homecoming Parade, Air Force ROTC Field Day, registration, Air Force commissioning service, basketball half-times, and various other athletic and social events. Off-campus activities have included participating in Founder's Day at Reese Air Force Base, and hostessing for different social functions such as the Miss Lubbock Pageant. For special trips, the Angels have projects to raise money, such as car washes.

The Angels have always come out as winners in the past Area Drill Competition. After having received fourth place in the Sunshine Drill Meet in Tucson, Arizona, last year, the Angels will go again to Arizona to march in the 1966 drill competition. The Angels will also attend the National Conclave to be held in Dallas.

Meetings are held on Tuesday and Thursday afternoons. Membership is limited to 41 girls. Vacancies are filled in the fall and spring try-outs. The girls are selected according to ability, poise, character, and appearance. Angels are required to have a 2.0 grade average each semester.



Left to right: Virginia Fry, commander; Carol Giraud, executive officer; Mary Carolyn Hall, drill commander; Joan Hudson, AWS representative.





*Left to right: Beverly Grubbs, commanding officer; Georgene Blanton, executive officer; Terry Eisenschmidt, drill commander; Virginia Viets, AWS representative.*

## CorpsDettes

The Army CorpsDettes of Texas Tech is a girls' drill team and social organization sponsored by Scabbard and Blade and the Army ROTC.

CorpsDettes is designed to promote activities and interest in the Army ROTC program at Tech and to increase the educational experience of the members through off-campus events. The girls participate in many campus activities such as marching in the Homecoming Parade and the Rodeo Parade, preparing for the Military Ball, and hostessing various social and athletic events. Off-campus activities include a retreat to Fort Sill, Oklahoma, participation in the St. Patrick's Day Parade in Shamrock, Texas, and various drill competitions.

The traditional Army green uniform worn by the members consists of a straight skirt and semi-fitted jacket complemented by a gold ascot and braid. Uniforms are worn every Thursday and for special events.

Members, not to exceed 45, are selected at the beginning of each semester on the basis of marching ability, poise, character, and appearance. A 2.0 grade-point average is required each semester. Meetings are held on Tuesday and Thursday afternoons.

## Major-Minor Club

Welcome to Texas Tech and to the Women's Physical Education Department.

The Major-Minor Club is a professional and social organization for women students majoring, minoring and specializing in physical education.

The purposes of the club are to develop a professional attitude toward Health, Physical Education, Recreation, and related fields, to develop character traits of its members that will promote professional growth and develop a better and closer relationship among its members, and to promote the development of the profession by providing leadership and service in the Club, College, and community.

Officers are: Jo Sanders, president; Ada Rummell, vice president; Gwen Botik, secretary; Carra McNamara, treasurer; and Diana MacDougall, AWS representative.



*Left to right: Jo Sanders, president; Ada Rummell, AWS representative; Diana MacDougall.*





*Left to right: Karen Poff, president; Roselaine Ashton, vice president; Judy Gordon, AWS representative; Kathleen Brown, pledge trainer.*

## Women's Service Organization

Since its origin as a committee of the Association of Women Students in 1959, Women's Service Organization has increased in size from the original seventeen members to over one hundred at the present time. The women of the organization contribute over 1500 service-hours to the campus and community each semester.

Women's Service Organization gives the woman student an opportunity to be of service to the college while allowing her to identify herself with a respected group. The maroon and white uniforms of WSO are a familiar sight on campus as the members proudly work on numerous projects, including homecoming activities, campus elections, annual bike races, Mile of Pennies for the World University Service, and annual Carol of Lights.

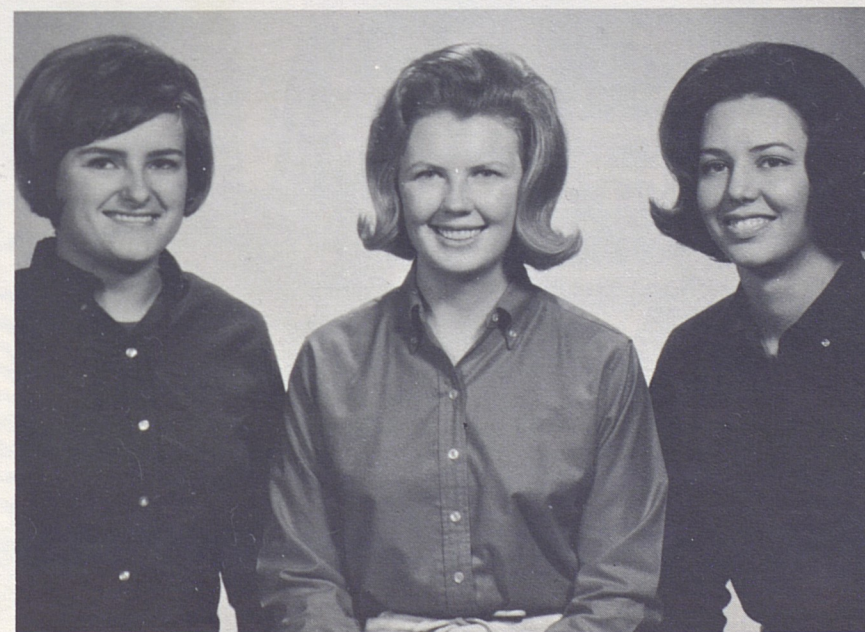
The principles of Friendship, Service, and Equality are stressed during the period of pledgship as well as among the active members of WSO. During the ten-week pledgship, pledges become acquainted with actives through working on joint projects and signature appointments. The requirements for initiation are few: a 2.0 grade average, ten service hours, and most important, a desire to serve.

## Town Girls Club

Town Girls Club was organized in 1953 and designed for a very special group of girls. These are the girls who live off campus whose contact with its activities is often limited.

The club offers friendships, various projects and parties, information on current campus events, and participation in campus activities. Town Girls holds a get-acquainted party for new members at the beginning of each year, participates in the Big Sister-Little Sister program, plans parties for the club members, gives annually an Easter egg hunt for different groups of Lubbock children, and has a Christmas project. The past year new events which will probably become annual activities included singing in the Carol of Lights and entering a float in the Homecoming Parade.

Town Girls Club is an important part of Texas Tech; and if you plan to live off campus, it can be an important part of your college life. Our club is a growing participant of Texas Tech. Won't you join us and enjoy all the activities and friendships which are a part of Town Girls?



*Left to right: Sandra Stark, AWS representative; Janice Ogle, president; Mary Lynn Anderson, vice president.*



*Women's Residence Halls*







Left to right: Sandra Harris, president; Lynn Melton, secretary; Carol Weingartner, treasurer.

## Women's Residence Council

The Women's Residence Council, policy-making organization for the women's residence halls, is composed of the president and vice president from each of the halls. The first vice president of AWS serves as president of the Council and serves as the liaison between the halls and AWS.

Acting as official representatives of their halls, WRC members discuss questions of student government and regulations which arise in the residence halls and make appropriate recommendations to AWS for changes and revisions. WRC is an important communications link for women students; it promotes an effective cultural program and an atmosphere conducive to academic learning.

WRC sponsors the "Carol of Lights" each year in which the residence halls' choirs and other student choral groups sing Christmas carols to mark the traditional turning on of the lights decorating many of the campus buildings during the holiday season. Scholarship trophies are presented by WRC each year to the upperclass hall and to the freshman hall with the highest grade-point average.

WRC also sponsors a workshop each spring for all the newly elected officers of all halls, and for the legislators of the new women's halls.

## A Guide to Residence Hall Living . . .

### BE IN THE KNOW

If you are planning to move into a Tech residence hall, the following information should be quite helpful. We know that you will enjoy the many opportunities of residence hall life.

First of all, you're concerned about furnishing your room. If you are to be a resident of Doak Hall, Drane Hall, Horn Hall, Knapp Hall, or West Hall, you will find that each room has one desk (with two study places), two chairs, one chest of drawers, two beds, and two closets. If you are to be a resident of Weeks Hall, Wall Hall, Gates Hall, Hulen Hall, Clement Hall, or Stangel Hall, you will find that each room has two desks, two chairs, two chests of drawers, two beds, and two closets. (The difference in the number of desks and chest of drawers is due to the fact that in these last halls mentioned, all of the furniture is built in.)

Most girls wait until their arrival at Tech to choose curtains and bedspreads, for then they know the color and location of their rooms. However, if you plan to bring curtains from home, you will need to know the following information.

In Doak Hall, Drane Hall, Horn Hall, Knapp Hall, West Hall, and Weeks Hall:

- (1) Each room has two windows.
- (2) Each window will require a separate set of curtains.
- (3) The measurements of each window are as follows:

Hall	Width	Length
Doak	43 <sup>3</sup> / <sub>4</sub> x	69 inches
Drane	41 x	68 inches
Horn	40 x	66 inches
Knapp	40 x	66 inches
Weeks	34 <sup>1</sup> / <sub>2</sub> x	68 <sup>1</sup> / <sub>2</sub> inches
West	43 <sup>3</sup> / <sub>4</sub> x	69 inches

In Gates Hall, Wall Hall, Hulen Hall, Clement Hall, and Stangel Hall:

- (1) Each room has two windows.
- (2) These windows are not separated by a partition and therefore will require only one set of curtains. (These curtains will need to be wide enough to cover both windows.)
- (3) The total measurements of the two windows are as follows:

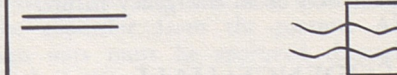
Width	Length
72 <sup>3</sup> / <sub>8</sub> x	54 <sup>3</sup> / <sub>8</sub> in.

Walls are made of plaster material, thus necessitating the use of curtain rods which do not require nails. Suction-cup rods may be purchased at Lubbock department stores.

Some suggested objects to bring from home include desk light, pillow, broom, mop, bulletin board, radio, record player, throw rugs, alarm clock, iron, and ironing board. If you're living in Weeks, Wall, Gates, Hulen, Clement, or Stangel, you will not need the desk light, bulletin board, or ironing board, as they are built in. TV's, pets, and firearms are NOT allowed in the residence halls.

### HERE'S HOW IT'S DONE

Your MAIL is put in a mailbox assigned to you when you register in the residence hall. Office girls put up the mail which is delivered once a day. Outgoing mail is collected at this time.



Jane Smith  
Wall 332  
Texas Tech  
Lubbock, Texas 79406



You will be notified by the Campus Post Office in the Administration Building if you have an insured package, registered letter, etc. Packages which are not registered are delivered to the hall.

Mail addressed to you should include YOUR residence hall, YOUR box number, and zip code—79406.

The DINING HALL is open for meal service as follows:

	Mon.-Sat.	Sun.
Breakfast	7:00-8:00	8:00-8:45
Continental		
Breakfast	8:15-8:30	X
Lunch	11:15-1:15	12:00-1:00
Dinner	5:15-6:30	No meal

There are LAUNDRY and drying rooms in each women's residence hall with automatic washers (25¢ per load) and dryers (10¢ per load).

All needed REPAIRS should be reported to the office. Each hall has its own "Mr. Fixit" to make repairs and fill such requests as replacement of electric light bulbs, etc.

A large STORAGE room is provided in each hall where trunks and luggage are stored. Check with your hall office for the key.

PHONE SERVICE is provided for every room. Your number is an extension of the college number: POrter 2-8811. The charge is included in your room and board account. All prepaid long distance telephone calls and telegrams must be made from pay stations in the buildings. Telephone service is provided from 7:00 A.M. to 11:00 P.M. daily. After 11:00 P.M. an operator, who is in attendance all night, will handle calls of an emergency nature.

## RESIDENCE HALL GUESTS

Students may have guests in the residence halls only on Friday and Saturday nights except by special permission given by the Coordinator, Women's

Supervision; however, mothers are welcome any time. All overnight guests must register in the hall office and a guest fee (with the exception of mothers of residents) of 50 cents is charged each guest. Guests maintain the hours of their student hostess. The hostess is responsible for the conduct of all guests and is also assigned any late minutes her non-resident guest might accrue. Guests sign in and out of the residence hall on a guest sign-out sheet.

When girls are guests in another hall on campus, the same procedure for signing out is to be observed as for any overnight in Lubbock. Resident students, while guests in other halls, are responsible for their own late minutes and are charged a 50 cent guest fee.

## RESIDENCE HALL ASSOCIATION

Every women's hall resident is automatically a member of the residence hall association, which has as its purpose, as stated in the constitution, "to prepare each student for active and co-operative citizenship through participation in democratic self-government."

Texas Tech's administration believes in student government and is glad to extend the privileges of self-discipline as far as the students themselves are capable of accepting the responsibilities which this implies.

AWS dues of \$1.00 are paid as the woman resident checks into the residence hall. At the same time, social dues, which may range from \$1.50 to \$3.50, are paid to the Residence Hall Association.

## RESIDENCE HALL COUNSELORS

Each residence hall has one adult supervisor, the hall counselor, who is professionally trained for her job. The counselor is responsible for administering a smoothly run hall with an atmos-

phere conducive to study and for counseling with the girls in the hall whenever the occasion arises. The counselor can be reached at any hour by calling the college number and asking for the desired residence hall.

## RESIDENCE HALL LEGISLATURE

The official governing body of each hall is the legislature, composed of girls selected each spring from the membership of the residence hall association. They live in specified rooms on each wing of the hall and represent the viewpoint of the girls on that wing in legislature meetings and are responsible for the welfare of their particular wing in the hall. Legislators are the key link in communicating information to and from AWS, the administration, WRC and the hall legislature.

Legislature and wing meetings are held every two weeks. All residents are to attend wing and hall meetings.

## THE ADVISORY COUNCIL

Advisory Council is the agency through which the rules of the hall are interpreted. This group advises the girls on hall regulations and policies. In each hall it is set up under the hall's student government. The purpose is to hear cases of girls who have broken hall or AWS regulations. The Council has the responsibility to decide on the restrictions of a student's social privileges.

## RESIDENCE HALL REGULATIONS

For safety and service, students are required to sign out whenever they are to be out of the hall after 7:00 P.M. Each girl must sign in and out for herself. If an instance arises, however, in which the girl has failed to sign out,

she may call her counselor or her hall office to sign her out. No hall doors are to be opened before 6:30 A.M. and side doors are to remain locked after 7:00 P.M.

## A. REGULAR CLOSING HOURS ENTERING FRESHMEN (until second semester)

Mon.-Thurs. 9 P.M.	Friday 12 P.M.	Saturday 1 A.M.	Sunday 11 P.M.
-----------------------	-------------------	--------------------	-------------------

## UPPERCLASSWOMEN

10:30 P.M.	12 P.M.	1 A.M.	11 P.M.
------------	---------	--------	---------

## SENIORS

11 P.M.	12 P.M.	1 A.M.	11 P.M.
---------	---------	--------	---------

Exception: There will be NO senior hours on wing meeting nights.

In order to be classified for these hours a sophomore must have 32 hours with 64 grade points; a junior must have 64 hours with 128 grade points; and a senior must have 96 hours with 192 grade points.

## B. WEEKEND AND OVERNIGHT SIGN OUTS

A general permission card signed by your parents must be on file in the residence hall office before you are permitted to sign out overnight. It is each student's responsibility to know the permissions granted her by her parents.

Weekend nights are Friday and Saturday nights. Students do not spend week nights out of town or at home except in an emergency and with special permission from the hall counselor and the student's parents; special permission is required if the specific instance is not stated on the general permission card. All special permissions must be addressed and sent directly to the counselor from the parents. All sign outs must be approved through the hall office, and each girl is responsible for making certain that her sign out process is complete. Whenever a girl spends the night out of the hall, a post card stating where she is going is sent to her parents by the residence hall counselor; each girl is to go to the



place to which she has signed out. Misinformation on any of these records could constitute a falsification of records.

The out-of-town sign-out sheet (white one) is to be used when girls are leaving town for the day and returning to the hall before closing the same day. The sign-out sheet must be approved by the counselor or her official representative. The sign-out is checked with your permission card before approval is granted. When the sign-out is approved, it becomes an official record.

#### (1) WEEKEND OUTSIDE LUBBOCK

You may fill out weekend sign-out slips in the office during the day until 8 P.M. Sign-outs must be filed by the student in the box provided for this record. (A sign-out sheet for either a weekend outside of Lubbock or a weekend in Lubbock should be completed by Thursday night at closing time.)

#### (2) WEEKEND OR OVERNIGHT IN LUBBOCK

Fill out form in hall office for Lubbock sign-outs before 4 P.M. of the day you are to leave so that your hostess may be contacted for confirmation of the invitation. Students may stay only with families or married couples in Lubbock. Students must make sure the hostess has been contacted and her sign-out card approved by the residence hall and filed by the student before she leaves. Freshmen are permitted one week night, Sunday through Thursday, per semester in Lubbock. Upperclasswomen have three week nights per semester. Again, *girls must go to their designated destination.*

#### (3) OVERNIGHTS FOR LUBBOCK FRESHMEN WHO ARE HALL RESIDENTS

Lubbock freshmen who are hall residents are allowed one regular plus only three week nights a semester at home.

(4) A girl is always permitted to stay in a hotel or motel with her own parents, provided one of them signs for her at the residence hall. She may also stay with any married relative and/or friend's parents if she has her parents' written or telephoned permission directly to the hall counselor and if the relatives or friend's parents also sign for her at the residence hall. Any exception to the above must be discussed with the Coordinator of the Women's Residence Halls.

#### C. RETURN FROM VACATION OR WEEKEND

All students return to the hall from an official college holiday or weekend by 11:00 P.M. Exceptions to this rule must be discussed with the counselor. If an emergency arises and the student is delayed, she should notify her counselor of her whereabouts immediately. It is suggested that a girl allow two extra hours of traveling time to take care of any unforeseen difficulties.

#### D. SPECIAL PERMISSION

Women residents may attend all-college academic programs, plays, concerts, lectures, and athletic events.

Women residents may attend any program sponsored by the following civic organizations:

- Civic Lubbock
- Lubbock Symphony Concert Association
- Lubbock Theatre Centre
- Lubbock Community Concerts Association

When the event lasts past the regular closing hours, the student is expected to remain until it is over. For events held on campus, she must return to the residence hall within 30 minutes after the event is over; for events held off-campus, she must return within 40 minutes. The student should sign out on the board designated Special Permission.

Organizations and/or individual students may request from the Women's Residence Council campus-wide permission for special events. The written re-

quest, stating the nature of the activity, must be received at least one week prior to the event by the Chairman of Women's Residence Council, Housing Building.

Late permission for any other reason should be requested from the Coordinator of Women's Residence Halls not later than 4:00 P.M. on the day of the event.

#### E. EMERGENCY PERMISSIONS

In an emergency or an unusual situation, the counselor may grant special permission.

#### F. QUIET HOURS

Quiet hours must be maintained from 7:00 P.M. until 7:00 A.M. "Reasonable" quiet must prevail at all times.

#### G. MEN CALLERS

Men callers are not permitted to visit in women's residence halls until after the noon hour. Men, however, may come into the lobby to call for a girl after 8:00 A.M. Monday through Saturday. Sundays, men may visit in the lounge after 8:30 A.M.

#### H. SOCIAL CONDUCT

Tech women do not wear blue-jeans, treader pants, or bermuda shorts in the residence hall formal lounge or lobby, Tech Union, or academic buildings including the library. The exception to this rule is that casual clothes may be worn to labs with the permission of the instructor.

Casual clothes may be worn in the informal lounges in the halls which have them. Students should dress appropriately in the dining hall. Shorts, blue-jeans, brunch coats, bermuda shorts, or houseshoes are not worn. Night caps should not be worn in the dining halls, and curlers, etc. must be covered with a head scarf. The exceptions to this rule are Saturday, "casual dress" day, and the day of no classes between dead week and final exams when bermudas, jeans, and treader pants are permitted in the dining halls. "Cut-offs" are never worn in the dining halls. "Casual dress" does not apply at lunch and dinner when

there is a home football game. You should always show your consideration for others by not cutting in line in the dining hall line.

Tech women are in accord with Emily Post in believing that good taste is consideration for others. Overt public display of affection is considered in bad taste and is not permitted in the lounge, lobby or entrances of the residence hall. It is not considered good taste for a Tech woman to visit an apartment of a male student.

#### I. COLLEGE REGULATIONS

(1) All residents are expected to conduct themselves as mature young women. In keeping with this, any woman entering the residence hall who has been drinking alcoholic beverage and calls attention to herself by unusual and unlady-like conduct will be subject to disciplinary action which could result in suspension. It is also understood that no alcoholic beverages are to be brought into or consumed in the residence halls.

(2) Selling, peddling or offering for sale is strictly prohibited on the campus and in college buildings without permission from the Vice President for Business Affairs. Permission to sell in the residence halls will be granted only with the approval of the Director of Residence Halls. Any person selling on Tech campus should be asked to show a written statement of permission to sell, signed by the Vice President of the College.

#### AWS REGULATIONS

##### MEN'S RUSH PARTIES

(1) Girls may act only as hostesses at these events and are not to be involved in any sort of entertainment program.

(2) There is no set number that may attend the party as hostess, although sorority women should be aware of the Panhellenic policy which governs their members' participation.

(3) Only groups recognized as or-



ganized and professional may attend for the purpose of entertaining in any way.

(4) No late permission will be granted for residence hall girls who serve as hostesses at men's rush parties.

#### SERENADES

The fraternity or other organization desiring to serenade should contact the residence hall counselor by 5:00 P.M. of the Monday night the serenade is planned and report the time within five minutes when they will serenade in order to avoid conflicts with other serenading groups. Serenades shall begin at 10:10 and 10:40 P.M. This permits only two per evening, and they must be over so that girls may be in their respective halls by 11:00 P.M.

Late minutes will be given a girl who returns after 11:00 P.M.

Lubbock girls may be serenaded at one of the women's halls not already reserved by a hall resident.

Phi Mu Alpha, music fraternity, has special permission to serenade on Wednesday night.

After a request for a serenade of a sorority woman has been scheduled by the hall counselor, the sorority being serenaded must take an alphabetical list of the girls in the sorority to attend the serenade from each hall to that hall office. This list should be in the residence hall office by 8:00 P.M. of the night of the serenade. Only girls whose names are on these lists may go to the serenade.



Left to right: Constance Thomas, president; Donna Parson, vice president; Betty Lane, AWS representative.

### Clement Hall

Hi! We want you to be a Clement girl. Located on the corner of 19th and Flint, we are beginning our third year as one of the newest residence halls for upperclasswomen.

Clement has the convenience of quiet study areas and the fun of an enclosed sunbathing area. A spacious contemporary formal lounge, complete with a baby grand piano, provides a place for entertaining friends and dates. For less formal entertainment, the informal lounge can be used for playing bridge or watching color television.

In Clement we offer a wealth of planned activities as well as the exciting

day-to-day hall life. To provide opportunities for participation, we have mixers with men's residence halls, serenades by fraternities, all-hall parties, intramural sports, exchange dinners, a weekly devotional, and open house for special occasions. Each semester we have a scholarship banquet for those who have excelled in this field. This past year Clement Hall won the trophy for the best homecoming decoration.

Clement is really getting underway now! Won't you come and help us make it even more wonderful?



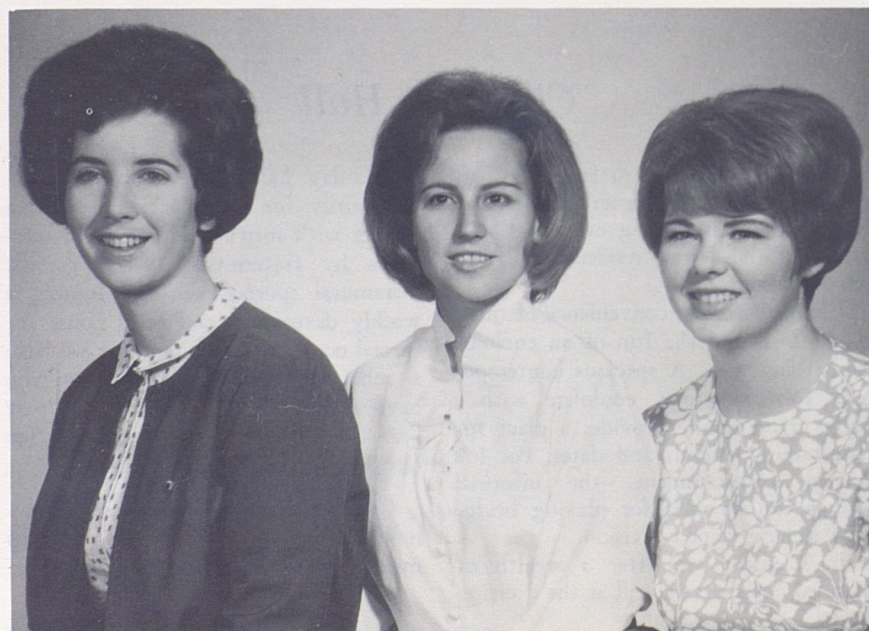
## Doak Hall

Stately, ivy-covered Doak Hall is found at the end of a tree-canopied walk—almost at the exact center of the Texas Tech campus. Doak's charm lies not only in its exterior appearances, but also in the warmth of the life within its doors. All-hall parties, projects, and monthly birthday parties offer carefree, sociable hours to the Doak resident. For that time which must be given to more scholarly pursuits, Doak Hall provides a comfortable study hall. A rose dinner each semester honors those residents of Doak who have been successful in maintaining a 3.0 grade-point average.

Doak was one of the first buildings on campus. It was originally a women's

residence hall, but housed men for several years following World War II. In 1958, Doak was returned to the women students. Since its return to the women, Doak has been redecorated. Among the improvements was included a lovely, second-floor lounge. The lounge is arranged in comfortable groupings of furniture, affording privacy to small groups or—by means of rearrangement—the lounge is able to accommodate all of the hall residents at the frequent all-hall parties.

We hope that you will take the opportunity to expand the rich experience of college life by taking part in hall life at Doak Hall.



Left to right: Carola Mobberley, president; Pamela Mayo, vice president; Rita Lievens, AWS representative.



Left to right: Barbara Poff, vice president; Margaret Hunter, president; Clare Smith, AWS representative.

## Drane Hall

Drane Hall is home for 316 girls spending their first year at Tech. The warm, friendly atmosphere and enthusiastic spirit make the numerous activities throughout the year memorable experiences for many more years to come.

Freshmen at Drane begin the year with an all-hall party to acquaint them with their officers and legislators. The sophomores provide the entertainment, and the freshmen get their first glimpse of some of the Drane Hall traditions. There is an informal lounge for relaxing and watching television. The beautiful, large lounge is perfect for playing bridge, holding hootenannies, or entertaining dates. It is also the place where the residents gather one night each week for a short devotional.

Since good scholarship is the aim of every student, Drane's cafeteria is used as a study hall each week night. In the spring there is a candlelight scholarship dinner to honor those girls who make a 3.0 or over for the first semester.

Drane Hall girls like to share their enthusiasm with others. Special projects such as raising money for the World University Service or giving a party for an underprivileged Girl Scout troop are undertaken each year.

Drane girls leave their first home at Tech with fond memories of the time spent here. We will be eagerly waiting for you to join us in the fall, when you, too, can enjoy the spirit, cooperation, and friendliness of Drane Hall.



## Gates Hall

Want to be a Gates Girl? Gates will celebrate its third year as a freshman hall with all the excitement and tradition that Gates Girls originated. All this tradition is just waiting for you to carry on.

In its short history Gates has already gathered an impressive list of honors. Gates has won an award for Homecoming decoration and has served as hostess for the Carol of Lights Banquet and the AWS Women's Day Luncheon.

Some of the Gates' traditions include a Halloween Hootenanny in which each wing enters a costume competition, a Scholarship Banquet for those with a 3.0 or over, a special Freshmen Rep-

resentative program with their special day, and a Gates' Door Decoration Contest at Christmas. We also have mixers with men's halls and a choir for the Carol of Lights.

Gates is designed with a freshman in mind. For your midnight snack there is a concession room. For the sunbathing season Gates is equipped with enclosed patios. There are also telephones in each room, laundry facilities, and elevators. A color television adorns the informal lounge. Gates furnishes a private room in the basement for small parties and quiet studying.

Gates is tops! Wouldn't you like to be a Gates Girl?



Left to right: Joan Williams, president; Paula Leathers, vice president; Margaret McMillin, AWS representative.



Left to right: Susan Stewart, AWS representative; Jaclyn Scott, president; Anita Pratt, vice president.

## Horn Hall

Horn Hall is busily humming all year long with freshman girls who are taking part in all phases of college life. The year begins with a succession of mixers with men's residence halls. With fall, of course, comes football season; and Homecoming is one of the most important events. All of the Horn girls work together to build one of the best hall decorations each year.

The Horn girls greet Christmas with enthusiasm. Each girl decorates her door, and there is an all-hall party in which everyone decorates a tree that stands between the double stairways in the foyer. The girls also form a choir and sing in the Carol of Lights.

Of course, scholarship is important at Horn. The cafeteria is used every week night for study, and a private study room is open at all times. A scholarship banquet is given at the end of the year honoring all girls who make a 3.0 or above the preceding semester.

The location of Horn is perfect! Because it faces College Avenue, one finds the view beautiful, and it is close to academic buildings and College Avenue stores. There is even a beautiful grassy lawn to the side of Horn where girls may sun-bathe.

What more could one ask for during her first year at Texas Tech? The Horn girls can't think of anything else!



## Hulen Hall

Hello! Welcome to Hulen Hall, one of the newest residence halls for upper-classwomen. Hulen is connected with her sister dorm Clement Hall, by a spacious, refreshingly modern lounge.

This beautiful hall was designed for leisure as well as study. A glassed-in cafeteria on the mezzanine provides a place to study from seven until twelve o'clock each night. A kitchenette provides a place for preparation of refreshments for hall parties and other social events. Other conveniences include year-round air conditioning, an inclosed sun-bathing patio, a centralized concession room, telephones in each room, an informal lounge with colored television, a basement TV and study room, laundry facilities, and elevators.

Traditions include weekly devotionals, Dad's Day Open House, Homecoming and Christmas decorations, an all-hall Christmas party, "three point" banquets, Hulen Girl of the Month recognition, Appreciation Banquet for legislators and officers, and a Hulen Honor Roll. This year Hulen was active in the Carol of Lights—with a hall choir, as hostess for the banquet, and first recipient of the traveling trophy. Projects included the dedication banquet and presentation ceremonies for General Hulen's portrait, sending books to servicemen in Viet Nam, a scholarship plaque, and the selection of permanent wing names.

Enrich your college experience. Join in the fun and activity—come live in Hulen Hall!



Left to right: Virginia Viets, vice president; Sarah Abernethy, president; Catherine Carmichael, AWS representative.



Left to right: Janice McDuff, president; Janice Holland, AWS representative; Judy Caldwell, vice president.

## Knapp Hall

We in Knapp anxiously await the arrival of 350 new coeds eager to begin their first year of college.

Friendliness, enthusiasm, and activities are always found in Knapp. To begin the year, the hall has mixers with men's halls, followed by homecoming decorations, fraternity serenades, all-hall parties, intramural sports, and exchange dinners.

Traditions at Knapp Hall include the "Knapp Doll House" for which we contribute dolls during the "Toys for Tots" campaign each Christmas, an open house during Christmas, and a Christmas candle-light ceremony.

There is an informal lounge for playing cards and watching television with

our dates and a formal lounge with a color TV for entertaining our friends.

Knapp promotes high scholastic achievement. The cafeteria is used week nights from 7:00 until 12:00 as a study room. A banquet is held in the spring honoring the highest scholars in the hall.

One night each week, after closing hours, a short devotional period is held in the formal lounge for those wishing to attend. This serves as an inspiration to many girls.

One of the more centrally located halls, Knapp is withing a block of the Tech Union, Library, Bookstore, and main academic buildings.

We're looking forward to seeing you in Knapp.



## Stangel Hall

The 521 upperclasswomen who live in Stangel Hall are offered the opportunity to live in the first coeducational residence hall on the campus. It is connected to Murdough Hall, the newest men's hall, by a lounge and cafeteria on the first floor and mezzanine, a recreation room and snack bar in the basement.

The activities of the hall will cater to the needs of upperclass women with the emphasis on scholarship, friendliness, and participation in campus activities. Study rooms will be provided on the upper floors as well as in the basement after closing hours. Those attaining high levels of scholarship will be honored throughout the year. Friendliness will be encouraged by the atmosphere of the hall and through the participation in hall and campus activities, such as the

celebration of holidays, birthdays, and special days on the campus.

The facilities of the hall are of a unique quality and they will certainly add to the pleasure of living in these halls. A beautifully decorated and very comfortable snack bar will be available to Stangel Hall residents. The landscaping includes a garden area adjacent to the snack bar. A glassed-in cafeteria in on the mezzanine, which overlooks the lounge and office area. Facilities are provided on the mezzanine for card playing, visiting, and television viewing.

As residents of Stangel Hall, all of the tradition-making and precedent-setting will be up to you. The men who formally lived there left it well filled with enthusiasm, and it is our privilege to take advantage of it. We are happy you are joining us for the pioneer year in Stangel Hall.



Left to right: Kathleen Francis, president; Patricia Ramsey, vice president; Sue Aiken, AWS representative.



Left to right: Rosemarie Salvato, vice president; Beth Thompson, president; Margaret Reeburgh, AWS representative.

## Wall Hall

Friendly smiles and a fun-filled atmosphere greet each girl who enters Wall Hall, one of Tech's newest freshman women's residence halls. This home of 404 coeds is easily accessible to the Library, Student Union, and academic buildings.

Incorporating the Spanish motif of the campus, this lovely hall offers a treat for the freshman with its sun-bathing area, concession room, color television, and small party room. You'll find a decorative formal lounge in which to entertain and an informal lounge perfect for fun with your

date, a foursome of bridge, or an impromptu visiting session. For your convenience, Wall also has laundry facilities, elevators, and a telephone in each room.

You'll like our traditional serenades, honorary scholarship banquet, and parties before holidays. Devotionals are also a meaningful part of hall life here.

With such a pleasant home, it's a joy to show it to your family and friends during the open houses held during the year, such as those given during Dad's Day and Homecoming.

We're proud of Wall—and hope you will be also!





Left to right: Carol Weingartner, president; Lynn Melton, vice president; Carolyn Pepper, AWS representative.

## Weeks Hall

You will find that living in Weeks Hall will add a special charm to your college days, for Weeks Hall offers you beautiful, tasteful surroundings, and modern living conveniences.

Just off the main lobby is the formal lounge for entertaining your friends and parents. An informal lounge is perfect for watching favorite television programs and playing bridge games with friends and dates.

Traditions begun by Weeks' upperclasswomen in the past are an important part of the hall life. Each Christmas we collect toys and donate them to a Negro children's nursery here in Lub-

bock. Another Christmas tradition is the candlelight caroling service given by our seniors.

You will also enjoy the all-dorm parties, serenades by fraternities, intramural sports, and other group activities taking place all through the year.

We are especially proud of our scholastic achievement in Weeks. We have retired the upperclass scholarship trophy after winning it six years in succession. We will be working hard to continue this record. We know that you will find your stay in Weeks a memorable living experience.

## West Hall

Just listen to the cry of the young men on campus—"Go West, young man, go West!" West Hall is the home of 300 upperclasswomen and is located next door to Sneed and across the boulevard from Weeks and Doak halls.

West Hall is unique in several ways. It has the advantage of a study room, a typing room, and a legislator room that can be used for studying.

West Hall shares a modern consolidated cafeteria with Gordon, Bledsoe, and Sneed halls.

The girls of West are active in campus activities such as the "Carol of Lights," Homecoming, and intramurals.

We also enjoy such activities as a Christmas party for the orphans, an all-campus hootenanny, and weekly devotionals.

The West Hall lounge located on the second floor is the center of social life for the girls and their guests. In the lounge there are such activities as a foursome of bridge, a group crowded around the colored television, or an impromptu jazz session.

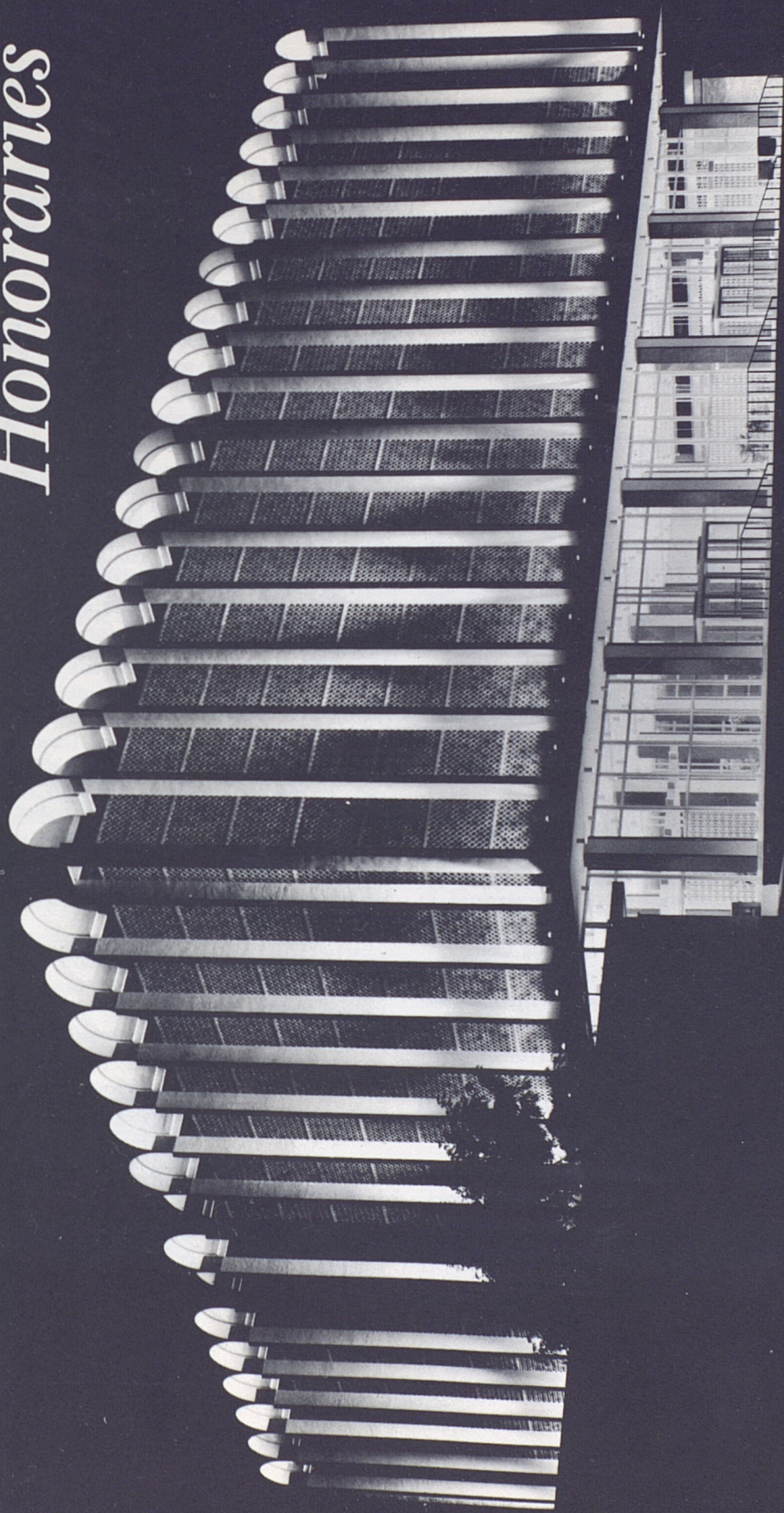
As a resident of West Hall, you will love the friendly atmosphere and spirit. We look forward to meeting you and hope to share all the fun and adventure of living in West Hall.



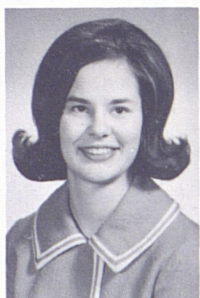
Left to right: Areta Privett, president; Lana Kaiwi, AWS representative; Pamela Sparkman, vice president.



# *Honoraries*







Kathryn Newsom

## Alpha Lambda Delta

Alpha Lambda Delta, national honor society, extends membership to any freshman woman who has a 3.5 grade average and 15 semester hours credit. If she does not qualify at the end of her first semester, a freshman may become eligible by attaining a 3.5 over-all grade average with 30 semester hours.

Activities are many and varied for the Alpha Lambda Delta member. At the beginning of the fall semester, all freshman women are invited to a party to acquaint them with the ideals and requirements of Alpha Lambda Delta. After mid-semester, Alpha Lambda Delta hosts a "Smarty Party" honoring freshman women who have attained a three point grade average to encourage them to fulfill Alpha Lambda Delta requirements. In the spring new members are honored at a banquet with Phi Eta Sigma, freshman men's honorary.

Alpha Lambda Delta strives to promote intelligent living and a high standard of learning, and to encourage superior scholastic attainment.

### OFFICERS

President .....	Kathryn Newsom
Vice President .....	Clare Smith
Secretary .....	Janice Ogle
Treasurer .....	Patricia Coil
Initiation	
Chairman .....	Mary Lynn Anderson
AWS Representative .....	Joanne Koch



A red weskit lettered with a "Jr. C" indicates a Tech woman who has received the highest honor which can be conferred upon a junior woman.

Junior Council, one of the oldest women's organizations on the campus, chooses for membership each year twenty-five outstanding women who have excelled in scholarship (at least an over-all of 3.00), leadership, and dependability while at Tech.

Each year the Junior Council girls decide upon their projects. Although an honorary organization, the girls still feel that Junior Council should have a place of service on the Tech campus by helping in academic recruiting, volunteer work, and book lists for fellow students.

### OFFICERS

President .....	Teresa Terrell
Vice President .....	Marcie Windler
Secretary .....	Judy Gordon
Treasurer .....	Susan Esterak
AWS Representative .....	Janis Langley



Teresa Terrell

## Mortar Board

"We Mortar Boards receive you with welcome hearts and hands . . ." echoes over our campus one special day each spring as Forum Chapter of Mortar Board taps its new members. Five to twenty-five junior women are admitted to this select group each year. It is the highest honor they may receive, based upon scholarship, leadership, and service.

Mortar Board was founded in 1918 and now has over one hundred college and university chapters in all parts of the United States. After many years of petitioning the national organization, Forum became Mortar Board in 1957.

Mortar Board strives to serve both its individual members and the campus. A tutor list is published each year for the benefit of students. Other activities of Mortar Board are the Homecoming coffee for alums, the Smarty Party for freshman women having a 3.0 grade average, and a program for Junior Council and Alpha Lambda Delta.

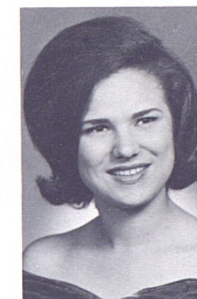
This year Mortar Board continued its "Pictures for Posterity" project in connection with the Southwest Collection. The project will compile a picture history of the college.

### OFFICERS

President .....	Laura Coil
Vice President .....	Beverly Barlow
Projects .....	Nan Faulkner
Secretary .....	Ann Nabors
AWS Representative ..	Nancy Fordtran



Laura Coil



Betty Jo Walvoord

## Mu Phi Epsilon

"Music is the noblest of the arts. A source of much that is good, just, and beautiful." This symbolizes the unity felt among Tech women music majors and minors of Mu Phi Epsilon.

This international professional music sorority for women was founded at the Metropolitan College of Music in Cincinnati, Ohio, on November 13, 1903. In 1952 a Tech chapter was installed.

Mu Phi Epsilon's chapter, Epsilon Pi, requires its members to have a 2.5 over-all grade average with a 3.0 grade average in music courses. Qualities of musicianship, leadership, and friendliness are essential.

Tech's Epsilon Pi chapter supports recitals on and off campus, performances of individuals in the glee club, and musical productions at Tech. An award is annually presented by the chapter to a deserving and talented member.

### OFFICERS

President .....	Betty Jo Walvoord
Vice President .....	Kay McGee
Secretary .....	Dana Heaton
Treasurer .....	Tee Hardin
AWS Representative .....	Roya Harris





Shirley Miller



## Phi Gamma Nu

Through Phi Gamma Nu, Tech women majoring in business administration become interested in civic and professional enterprises. The organization also encourages scholarship and participation in college activities.

Lambda chapter of the national professional sorority for women in business administration was established at Tech in 1949.

Members are women students working toward degrees in business. Pledges must have completed 6 hours in commerce and have a 2.5 grade average.

Lambda chapter sponsors the annual selection of a Mr. Executive, who is also a business administration major. Visits Lubbock and semi-annual banquets in the fall and spring are planned by the group.

The senior coed majoring in business administration with the highest scholastic average receives a scholarship key each year.

### OFFICERS

President ..... Shirley Miller  
First Vice President ..... Billie White  
Second Vice President ..... Ada Zilker  
Secretary ..... Billene Cannon  
Pledge Trainer ..... Beverly Dobbins  
AWS Representative ..... Hilda Harrod



## Phi Upsilon Omicron

Members of Phi Upsilon Omicron are chosen from women majoring in home economics who have completed their sophomore year and have an over-all grade average of 3.0 or better.

The honorary fraternity bases selection on character, scholarship, and campus activities, as well as on interest in home economics as a profession.

The activities of the organization give meaning to the stated purposes of strengthening the bonds of friendship, promoting the moral and intellectual development of its members, and advancing and promoting home economics.

Each year the group contributes to the Phi Upsilon Omicron scholarship and supports local welfare and alumni projects. Two teas are given annually, one for freshmen in home economics and one on Founder's Day.

### OFFICERS

President ..... Kay Gessling  
Vice President ..... Dolly Pillow  
Recording Secretary ..... Tanya Bryant  
Treasurer ..... Madeline Lemon  
AWS Representative ..... Deanna Hill



Kay Gessling

## Tau Beta Sigma

Tau Beta Sigma, the honorary fraternity for bandswomen, was granted its national charter on March 26, 1949; and on May 4 of that year, Beta Chapter was installed on the Tech campus. Actually, Tau Beta Sigma was founded on the Tech campus; however, Alpha chapter is located at Stillwater, Oklahoma, in order to share headquarters with Kappa Kappa Psi, the honorary fraternity for bandmen.

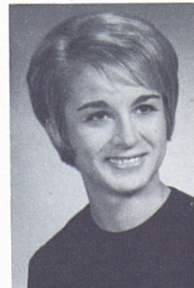
The purpose of the sorority is to promote and cultivate a wholesome respect for band activities, to honor outstanding bandswomen, to stimulate campus leadership, to foster a closer relationship among college bands, and to provide a pleasant social experience.

To become a member, a coed must be a member of one of the Tech bands and have a 2.25 grade average for the semester prior to her initiation.

Throughout the year, the chapter's greatest contribution and responsibility is the completion of the numerous essential tasks which maintain "That Goin' Band from Raiderland" in its rightful position of repute and respect throughout the nation.

### OFFICERS

President ..... Susan Watson  
First Vice President ..... Katherine Kleiss  
Second Vice President ..... Donna Adrian  
Secretary ..... Sheryl Swanson  
Treasurer ..... Karon Elkins  
AWS Representative ..... Marla Cave



Susan Watson



Barbara Worley

## Theta Sigma Phi

Women are constantly assuming a larger and more important role in the field of journalism and mass communication; and Theta Sigma Phi, professional fraternity for women in journalism, serves to unite women in the field of journalism in working for a free and responsible press.

Theta Sigma Phi, a national organization, was founded in 1909 at the University of Washington.

Tech's chapter cooperates with the local professional chapter in a number of projects, including the annual Matrix Table.

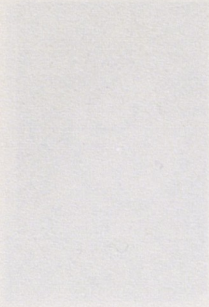
Tech's most handsome man is chosen in the fall at the Theta Sig mock night club, Club Scarlet; in the spring Theta Sigs sponsor the best dressed contest.

Another project of the local chapter is earning money for the Theta Sig scholarship, which each year is awarded to a deserving woman journalism major. The scholarship has been named the Louise Allen Scholarship, in honor of Mrs. Allen's contribution to Tech's journalism department and to Theta Sigma Phi.

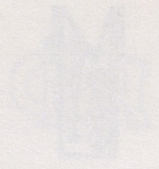
### OFFICERS

President ..... Barbara Worley  
Vice President ..... Cheryl Russell  
Secretary-Treasurer ..... Kaye Tipton  
AWS Representative ..... Karen Wright





Small caption text below the first image.



### Theta Sigma Phi

Theta Sigma Phi is a national organization of college women. It was founded in 1908 at the University of Wisconsin. The organization is dedicated to the promotion of scholarship, leadership, and service among college women. It is a member of the National Panhellenic Association.

The organization is composed of chapters at various colleges and universities. Each chapter is responsible for its own activities and for the promotion of the organization's goals.

Theta Sigma Phi is a proud member of the National Panhellenic Association. It is committed to the promotion of scholarship, leadership, and service among college women.

The organization is dedicated to the promotion of scholarship, leadership, and service among college women. It is a member of the National Panhellenic Association.

Theta Sigma Phi is a proud member of the National Panhellenic Association. It is committed to the promotion of scholarship, leadership, and service among college women.

The organization is dedicated to the promotion of scholarship, leadership, and service among college women. It is a member of the National Panhellenic Association.

Theta Sigma Phi is a proud member of the National Panhellenic Association. It is committed to the promotion of scholarship, leadership, and service among college women.

The organization is dedicated to the promotion of scholarship, leadership, and service among college women. It is a member of the National Panhellenic Association.

### Phi Kappa Phi

Phi Kappa Phi is a national organization of college men. It was founded in 1908 at the University of Wisconsin. The organization is dedicated to the promotion of scholarship, leadership, and service among college men. It is a member of the National Panhellenic Association.

The organization is composed of chapters at various colleges and universities. Each chapter is responsible for its own activities and for the promotion of the organization's goals.

Phi Kappa Phi is a proud member of the National Panhellenic Association. It is committed to the promotion of scholarship, leadership, and service among college men.

The organization is dedicated to the promotion of scholarship, leadership, and service among college men. It is a member of the National Panhellenic Association.

Phi Kappa Phi is a proud member of the National Panhellenic Association. It is committed to the promotion of scholarship, leadership, and service among college men.

The organization is dedicated to the promotion of scholarship, leadership, and service among college men. It is a member of the National Panhellenic Association.

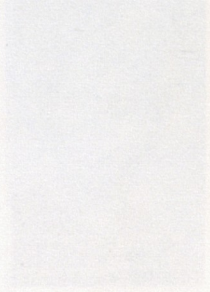
Phi Kappa Phi is a proud member of the National Panhellenic Association. It is committed to the promotion of scholarship, leadership, and service among college men.

The organization is dedicated to the promotion of scholarship, leadership, and service among college men. It is a member of the National Panhellenic Association.

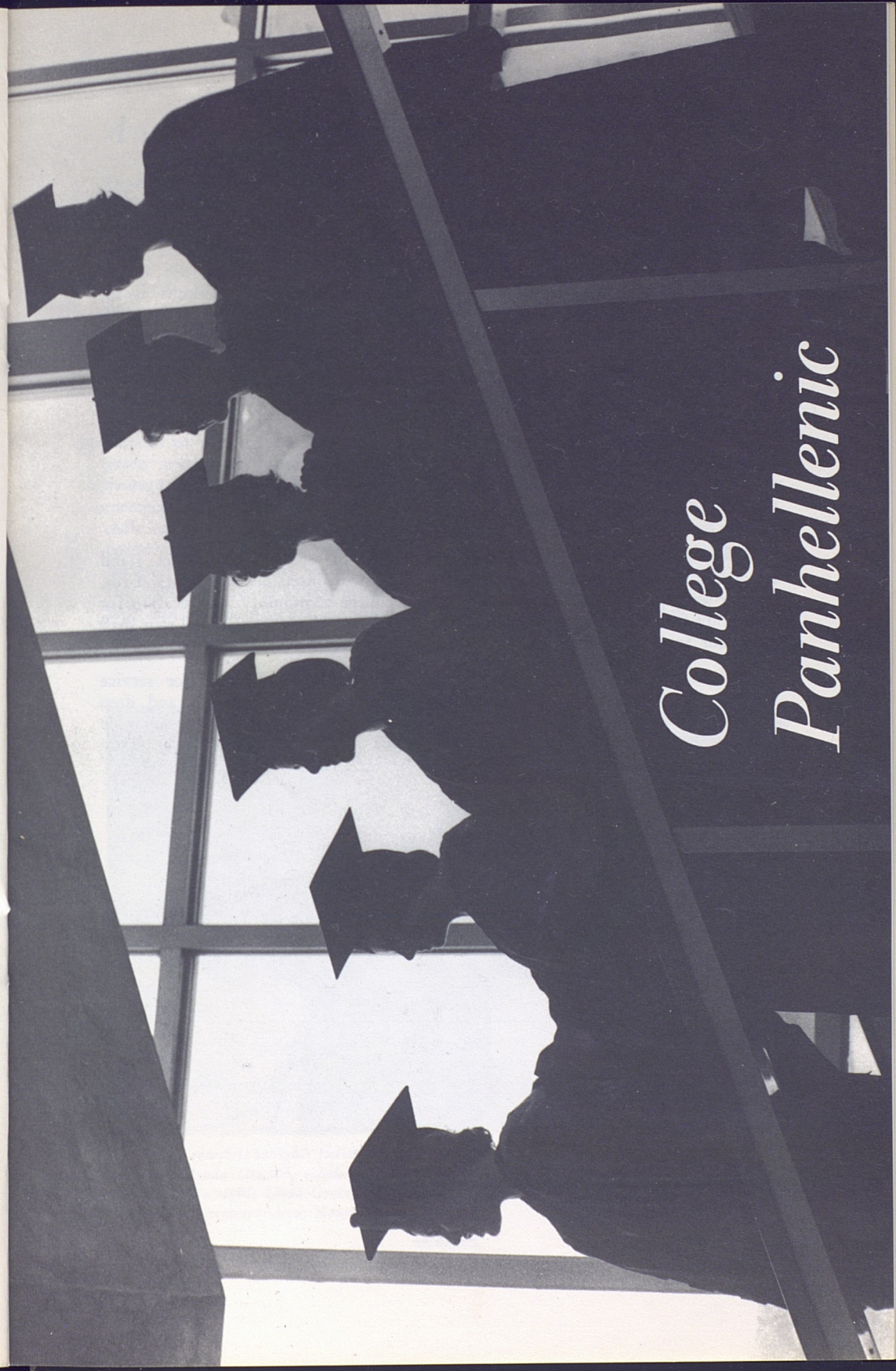
Phi Kappa Phi is a proud member of the National Panhellenic Association. It is committed to the promotion of scholarship, leadership, and service among college men.

The organization is dedicated to the promotion of scholarship, leadership, and service among college men. It is a member of the National Panhellenic Association.

Phi Kappa Phi is a proud member of the National Panhellenic Association. It is committed to the promotion of scholarship, leadership, and service among college men.



Small caption text below the second image.



# College Panhellenic



## THE PANHELLENIC CREED

We, THE UNDERGRADUATE MEMBERS of women's fraternities, stand for good scholarship, for guarding of good health, for maintenance of fine standards, and for serving, to the best of our ability, our college community. Cooperation for furthering fraternity life, in harmony with its best possibilities, is the ideal that shall guide our fraternity activities.

We, THE FRATERNITY WOMEN OF AMERICA, stand for service through the development of character inspired by the close contact and deep friendship of individual fraternity and Panhellenic life. The opportunity for wide and wise human service, through mutual respect and helpfulness, is the tenet by which we strive to live.

## An Introduction to College Panhellenic . . .

Dear Rushee,

In a few weeks you will arrive at Texas Tech to begin your college career. Many of you will participate in RUSH WEEK, a program that can result in many friendships for you, regardless of whether or not you pledge a sorority. A rushee has the opportunity of meeting hundreds of other new students and an equal number of sorority women. Formal rushing is worthwhile and vital, both for rushees and the sororities taking part. You will meet your future sorority sisters and other girls with whom you will form close friendships.

Before you arrive, you will want to give careful thought to what sorority membership should mean in terms of your obligation as a future member and in terms of what you expect to gain personally through this association.

The thirteen NPC sororities on the Tech campus maintain high standards in matters of personal conduct, scholarship, and campus citizenship. The all-sorority grade average is consistently higher than the all-college or all-women's grade average. Your scholarship is an important consideration for the sorority, for its members are expected to maintain above average academic ranking. In addition, each sorority supports a national philanthropy; each member, collegiate and alumna, participates in the local projects. Those of you who understand the relationship between a member and her sorority and wish to share in this relationship will find the group best suited to you personally. An open mind and natural, friendly manner will assure a meaningful and enjoyable Rush Week for you. We look forward to meeting you soon.

Nancy Taylor, President  
College Panhellenic Association



Top row, left to right: Judith Haworth, vice president; Suzanne Easley, Junior Panhellenic advisor; Linda Dawson, scholarship chairman; Margaret Griffith, rush chairman. Bottom row, left to right: Linda Groce, secretary; Jane Morse, treasurer; Carol Riek, social chairman/AWS representative; Nancy Taylor, president.



## What Is Panhellenic?

The word, Panhellenic, is derived from Greek roots—"Pan" meaning all, and "hellenic" meaning Greek. Thus, Panhellenic is an organization in which all Greek letter social sororities are represented, nationally as well as on this campus.

To promote inter-sorority cooperation and strengthen sorority-community relations as a whole, the thirteen social sororities at Texas Tech are member groups of the College Panhellenic Association.

### COLLEGE PANHELLENIC COUNCIL

The governing body of the organization is the Panhellenic Council, composed of two representatives from each sorority. This council meets regularly to discuss questions of mutual concern and interest, and to plan the various activities and special events sponsored by Panhellenic throughout the year. Before action is taken on certain matters, the representatives have an opportunity to discuss questions with their chapter so that all sorority members have a voice in Panhellenic decisions.

The officers of College Panhellenic Council are ex-officio members of the council. The executive board meets bi-monthly to discuss plans and in some cases, make recommendations to the council for action, coordinate the various activities of the Association, and conduct routine business matters. The officers serve as rush advisors and coordinate rush week.

Panhellenic officers and council delegates are as follows:

President ..... Nancy Taylor  
Vice President ..... Judith Haworth  
Secretary ..... Linda Groce  
Treasurer ..... Jane Morse

Scholarship Chairman ..... Linda Dawson  
Junior Panhellenic  
Advisor ..... Suzanne Easley  
Social Chairman/AWS  
Representative ..... Carol Riek  
Rush Chairman ..... Margaret Griffith

Alpha Chi Omega  
President ..... Barbara Birmingham  
Delegate ..... Karen McClelland

Alpha Delta Pi  
President ..... Sharon Durham  
Delegate ..... Sharon Stewart

Alpha Phi  
President ..... Elizabeth Gerbetz  
Delegate ..... Diane Naylor

Chi Omega  
President ..... Suzanne Hightower  
Delegate ..... Janis Johnson

Delta Delta Delta  
President ..... Katherine Gnauck  
Delegate ..... Susan Jeter

Delta Gamma  
President ..... Johnasue Melton  
Delegate ..... Molly Shipp

Gamma Phi Beta  
President ..... Mary Carolyn Hall  
Delegate ..... Vicky Pennington

Kappa Alpha Theta  
President ..... Marilyn Mingus  
Delegate ..... Lynn Snyder

Kappa Kappa Gamma  
President ..... Louise McCullough  
Delegate ..... Pamela Price

Phi Mu  
President ..... Tanya Bryant  
Delegate ..... Frances Blake

Pi Beta Phi  
President ..... Nan Faulkner  
Delegate ..... Suzanne Crain

Sigma Kappa  
President ..... Barbara Cline  
Delegate ..... Virginia Barrios

Zeta Tau Alpha  
President ..... Jill Philbrick  
Delegate ..... Suzanne Stilbert

## WHAT ARE SORORITIES?

### ACTIVE CHAPTERS

A sorority is an organization whose members have elected to establish a close affiliation and friendship with one another. Each sorority has a similar purpose—to offer an opportunity for close friendship and to teach its members leadership through the experience of working with others on common goals and projects. Mutual interest in education, college activities, and in each other binds the group together. Every sorority encourages and expects above average scholarship. Each encourages participation in varied activities which in turn offer unlimited and valuable experience.

Sororities promote lifetime friendships that are maintained after college in alumnae groups and chapters. The affiliation with a national organization gives chapter members a meaningful concept of their responsibility as individuals in a group.

### ALUMNAE GROUPS

Upon leaving college, initiated members of the sorority become alumnae and are eligible for membership in alumnae organizations. Each of these groups participates in a wide range of philanthropic and educational projects sponsored by its national organization as well as supporting local community programs.

## HOW DO SORORITIES CHOOSE THEIR MEMBERS?

Before a sorority asks you to pledge, the members want to be sure that you will be happy in their group and that they, in turn, will enjoy working with you. It is important for the sorority members to meet you and to see you as you really are. Formal rushing has been planned with this idea in mind. At the parties, sorority members will decide whether they think you will be a congenial member of their group.

Naturally, you want to make a "good impression" and you will dress carefully as will the girls whom you are going to meet. But do not think your appearance is all that counts. *Your high school record of activities and scholarship is carefully considered by a sorority in determining your potential as a member.* These are, after all, fairly dependable indications of your future achievements at Texas Tech.

Each sorority is limited in its total membership and its total number of pledges each year. The number of pledges allowed each chapter is determined each year by the number of girls interested in sorority membership. Each sorority was able to pledge a maximum of thirty-five girls during the last formal rush period.

## HOW DO YOU CHOOSE A SORORITY?

You should choose a sorority in exactly the same way you would choose any group of friends. It should be a decision based upon mutual interests and friendship.

During rush you will have many opportunities to talk with sorority women. They will be looking at you as a potential friend and you will be looking at them in the same manner. Act, then, as if you were with a group of your friends and talk about things which really interest you. Do not be afraid to ask questions about their sorority activities and finances. Sorority members will be happy to talk with you about them.

Do not set your heart on one group alone. It is best to know several groups. Remember to look for the heart of the sorority — its members. The girls you choose as sorority sisters will be your close friends for four years of college and for years afterwards. Every group is worthwhile and has much to offer you. What do you have to offer it?

Keep your eyes open and think for yourself. Do not be influenced by the



opinion of your associates and relatives. The decision as to which group is best for you must be based on personal convictions and mutual interest. When the time comes for a decision, make it a wise one.

## FINANCES

Your FIRST consideration in deciding to pledge a sorority must be whether or not you would be able to meet your financial responsibilities. All the sororities at Texas Tech have very similar financial requirements for members and pledges. Check your pocketbook and consider carefully the expenses of being a sorority pledge and member.

If you can afford to pledge a sorority, the extra expense is repaid a thousand-fold in companionship and sisterhood. Be sure you want to assume this obligation before choosing a group and pledging it.

## RANGE OF SORORITY EXPENSES — 1966-1967

Pledge Fee .....	\$15.00-\$28.00
Initiation Fee .....	\$40.00-\$85.00
Badge .....	Some in cost of initiation, others \$5.60 and up
Monthly Pledge Dues .....	\$14.00-\$25.50
Monthly Active Dues .....	\$14.00-\$18.00
Pledges' Financial Obligation .....	\$155.00-\$187.50
Actives' Financial Obligation .....	\$126.00-\$162.00

Most groups have a building fund fee ranging from \$50.00 to \$100.00. This may be in addition to the above standard fees or included in monthly dues. Other extra items may include favors for dinner dances and retreats, although some include these items in their dues. Extra costs which would not be included in dues might include personal insignia jewelry and composite pictures.

All sororities receive financial supervision from experienced alumnae and employed accountants. The financial advisors of the chapter welcome consultation with parents at any time.

## FORMAL RUSH

### LIVING ACCOMMODATIONS FOR RUSH WEEK

Rushees will be housed in freshman women's residence halls. Insofar as possible you will be given the room which has been assigned to you for the fall semester. Otherwise, the room you use during rush is temporary and in no way affects your regular housing for the college year. You will be assigned to your room when you register on campus. No further information concerning your room assignment will be available until your arrival on campus.

The Tech Union will open at 10 A.M. Friday, September 9, for registration. You are to go first to the Union to register and get a residence hall room assignment. Even if you have a permanent room assignment for the college year, you must go to the Union in order to begin rush registration with Panhellenic. After you have completed registration at the Union, you will move into the residence hall to which you are assigned for Membership Selection Week. You must register and move into the hall between the hours of 10 A.M. and 4 P.M. on September 9.

Rushees not in their permanent room assignment must be checked out of their rooms by 10 A.M. Saturday, September 17, in order that the students assigned to that room permanently may move in.

Since dining rooms in the halls are not open during Membership Selection Week, the Tech Union will serve meals to rushees at a nominal charge. When you go to the Union to register, you will be required to purchase a meal ticket for the week.

The halls will close at 1 P.M. during Membership Selection Week. Each rushee is responsible for signing in and out of the hall. Rule infractions will be transferred to your fall semester record.

Panhellenic expects all rushees to be neat, orderly, and quiet in their rooms, and to be courteous and cooperative with those in charge of the residence halls and with the people administering the program.

## IMPORTANT TIPS FOR RUSHEES

1. Fill out the Rush Registration Form and the 13 Information Blanks and grade information slip and return them with 13 billfold-size pictures, to the Office of the Dean of Women by AUGUST 1, 1966.
2. Pay rush registration fee of \$3.00, payable to Texas Tech College Panhellenic Association.
3. Pay room fee of \$18.00, payable to Texas Technological College. *Your registration for rush will not be complete until all fees are paid, and information blanks, registration and grade forms, and pictures are received.* Only registrations that are complete and postmarked before midnight, August 1, 1966 will be accepted.
4. If you find you must cancel your rush registration, notify the Office of the Dean of Women. Your room fee of \$18.00 will be refunded if you cancel by August 1. No exceptions can be made to this policy. Academic ineligibility after August 1 also forfeits the registration fees.
5. The Tech Union will be open for rush registration and room assignment from 10 A.M. to 4 P.M. Friday, September 9, 1966. The residence halls will be open at 10 A.M. for occupancy AFTER registering at the Union.
6. The College Panhellenic Advisor's Office is permanently located in the

will be held in private homes in Lubbock or in sorority lodges. Rushees will provide their own transportation.

*Friday, September 9, 1966*

- 10 A.M.-4 P.M. — Registration and move into rooms.
- 7:30 P.M. — Rushee Convocation and silence begins.
- 10:00 P.M. — Be in residence halls for wing meetings.

### PERIOD I

Duration — 30 minutes. You must attend each party.

*Saturday, September 10*

Thirteen parties beginning at 8:30 A.M.

### PERIOD II

Duration — 1 hour. You must accept all invitations to a maximum of eight.

*Sunday, September 11*

11:30-12:30 P.M. — Pick up invitations. (You may attend early church services.)

Dean of Women's Office; however, during Rush, all activity and business will take place in a temporary Panhellenic Office.

You may send checks or money orders, but please do not send cash through the mail. Do not send a check combining the two accounts.

It is recommended that registration be completed as soon as you receive the material from the Panhellenic Office. You may register by mail or in person. This must be no later than August 1, 1966.

## MEMBERSHIP SELECTION WEEK SCHEDULE

(A complete schedule with exact times and places will be given rushees at registration.)

Parties for Period I are held in various locations on the campus; each group is assigned to a place by rotation. Parties for Periods II, III, IV, and V



Three parties beginning at 2 P.M.

Monday, September 12

Five parties beginning at 9:00 A.M.

#### PERIOD III

Duration — 1 hour. You must accept all invitations to a maximum of five.

Tuesday, September 13

7:30-8:15 A.M. — Pick up invitations.

Five parties beginning at 9:30 A.M.

#### PERIOD IV

Duration — 1 hour. You must accept all invitations to a maximum of three.

Wednesday, September 14

10:30-11:00 A.M. — Pick up invitations.

Three parties beginning at 1 P.M.

#### PERIOD V

Duration — 1½ hours. You must accept all invitations to a maximum of two.

Thursday, September 15

2 P.M. — Pick up invitations.

Two parties beginning at 6 P.M.

10 P.M. — Signing of preference cards.

Friday, September 16

Free time. Rushees are still on silence.

Activities are planned for those who want to participate.

Saturday, September 17

8-10 A.M. — Rushees move to permanent residence hall rooms, or college residence.

Noon-3 P.M. — Rushees remain in MEMBERSHIP SELECTION WEEK rooms in case rush officials need to contact them regarding preference cards or other related subjects.

### PREFERENTIAL BIDDING

Thursday, September 15, at 10:00 P.M., all rushees fill out a preference card. On this card the rushee lists in order of preference the two sororities

that she is willing to pledge. *Do not list on your preference card the name of a sorority you would be unwilling to join.*

According to National Panhellenic Conference, "when a girl receives a bid under the preferential system, the signing of the preference card shall be binding to the extent that she shall be considered ineligible for one calendar year for a bid from any fraternity other than the one from which she received a bid, whether it be Texas Technological College or elsewhere, in accordance with the correct functioning of the preferential system."

THEREFORE A GIRL MUST BE WILLING TO PLEDGE EITHER OF THE TWO SORORITIES SHE LISTS.

### WHAT TO WEAR—WHEN

One of the most important things to remember when planning what you will wear during rush is the climate in Lubbock. Simplicity and practicality are the keynotes in campus and rush clothes.

Good grooming is the most important thing about appearance, not expensiveness of your clothes. Texas Tech coeds do not wear shorts or long pants of any kind in the Tech Union or academic buildings. This applies to registration the first day.

Bring your clothes for Rush Week with you. Luggage will not be delivered to the residence halls until after the official opening date, when Rush Week has ended. Deliveries of trunks will begin on Monday, September 19, 1966.

Period I — Wear fall cottons, flats or squatty heels, and hose. (Shoes should be comfortable to walk in.)

Period II — Wear fall cottons, loafers or flats.

Period III — Wear fall cottons, loafers or flats.

Period IV — Wear fall cottons, hose, and heels.

Period V — Wear an after-five dress, hose, and heels.

### SUMMER RUSH

The College Panhellenic Association of Texas Technological College has adopted the policy of NOT participating in any form of pre-college rush. This prohibits a sorority member at Tech from participating in a rush party other than during Formal Rush.

All prospective rushees are reminded that they are NOT to participate in or attend any function given by only one fraternity in the form of an organized party, prior to Formal Rush.

### RULES GOVERNING FORMAL RUSH WEEK

#### I. Eligibility of Rushees

Rushees must be regularly enrolled or in the process of enrolling in Texas Technological College for 12 or more hours in order to be eligible to participate in any rushing program. Rushees entering from high school must have at least a "C" high school average to be eligible. (This is the *minimum* grade average.) Any rushee previously enrolled in any college, including summer school, must have at least a "C" overall average and a "C" average for the semester prior to pledging in which she was enrolled in order to be eligible for rushing. Semester prior to pledging shall be interpreted as the fall or spring semester or the complete schedule of summer school work. All rushees are responsible to see that their transcript has been received by the Registrar's Office of Texas Technological College before the day rush begins. Complete the Grade Information Form enclosed with rush registration material, and return it with other material.

#### II. Membership Selection Rules

1. Rush week is defined as beginning at 10 A.M. Friday, September 9 and ending with receiving bids Saturday, September 17. Silence begins at 7:30 P.M. September 9 when Convocation is held.

2. The residence halls will close at 10 P.M. from Friday, September 9 through the following Friday night, and at 1 P.M. on the Saturday that rush ends. Each rushee is required to sign in and out of the hall. Lights are to be turned out at midnight during rush.

3. Upon arrival in Lubbock, a rushee is not to go to the home of sorority members, or be with anyone connected with a sorority other than her immediate family.

4. Rushees shall not grant interviews to the press or pose for photographers during rush week unless arrangements have been made with College Panhellenic and the Office of the Dean of Women.

5. Emergency telephone calls will be taken care of through freshman women's residence hall offices. Telephone calls may not be taken by rushees unless the emergency is explained to the Residence Hall Counselor. Request that your family and friends not insist upon talking with you during rush for you are the one who is penalized.

6. Rushees must furnish their own transportation to and from parties.

7. A rushee must arrive at and leave all rush parties at the hour specified in the invitation.

8. A rushee must attend all parties which she has accepted. Broken dates are not permitted. In case of illness, accident or withdrawal from rush, she must notify the Panhellenic Office.

9. There is to be no smoking at any of the rush parties.

10. Rushees are subject to the penalty of deferred pledging for one semester for violation of rush rules.

#### III. Silence During Formal Rush

Silence is a time when all rushees are asked not to converse with people other than the rush advisors except at the parties. The reason for this is that Panhellenic does not want a rushee's choice of sorority to be the result of outside influence. Girls are much happier in a



sorority which they themselves have chosen rather than a group which parents, boys, and other friends encourage them to join.

1. The period of silence begins with Convocation on Friday, September 9 at 7:30 P.M. and ends with acceptance of a formal bid on Saturday, September 17. Rushees may not receive guests in the hall during the period of silence. This also applies to women who have withdrawn from rush.

2. There shall be no contact or conversation between a rushee and sorority member, pledge, or alumnae except at the specified rush parties. (You may say hello!)

3. Sororities are bound by silence and may not deliver letters, telephone calls or telegrams to rushees at any time.

4. You may not receive mail, phone calls, or visitors. (You may write letters home.) Packages and messages may be checked through the Central Panhellenic Office and then be given rushees. Mail will not be delivered until Monday, September 20.

5. There is to be no contact whatever with men, family, or friends during rush week. The rushee may not leave the city of Lubbock to go home or for any other reason. Breaking of silence before rush week is over may result in automatic withdrawal from rush. Therefore, exceptions to this restriction cannot be granted.

#### IV. Illegal Rushing

1. Oral invitations to parties or to join a sorority are absolutely forbidden and invalid during formal rushing.

2. By mutual agreement there shall be no "spiking" at any time. "Spiking" is defined as persistent persuasion on the part of a sorority to secure from a rushee some commitment of preference for that group.

3. Sorority members shall make no statement to rushees or others giving their idea of sorority ratings, for there is no such thing.

4. No gifts, flowers, or favors can be given to rushees with the exception of Period V parties. Name tags are to be

distributed by College Panhellenic during registration, and to be worn all week with the exception of Period V parties.

#### V. Penalties for Violations of Rush Rules by Sororities

It is your responsibility to report infractions of any rush rule to the Dean of Women's Office within 48 hours of the occurrence. All penalties for violations of rush rules will be decided by the Judiciary Committee of College Panhellenic.

## Rush Registration Instruction

Have you followed these steps in preparing your rush registration material? DEADLINE—AUGUST 1, 1966 (postmark).

1. One (1) check for \$18.00 payable to Texas Technological College for your room.

2. One (1) check for \$3.00 payable to Texas Tech College Panhellenic for your registration. DO NOT SEND SINGLE CHECK COMBINING THE TWO AMOUNTS.

3. Thirteen (13) white Information Blanks legibly filled in.

4. Thirteen (13) billfold pictures of yourself.

5. White Master Rush Registration Form completed. (This is for use of Panhellenic Advisor and Rush officials.)

6. Grade Information Form filled out.

7. Place two checks, Registration Form, thirteen Information Blanks and thirteen pictures, and Grade Information Form in one envelope and mail to Office of the Dean of Women, Texas Technological College, postmarked no later than AUGUST 1, 1966.

8. Do you know your eligibility? If you have attended college any place at any time, this affects your rushing eligibility. You must have a C average for any previous college work. You must also have a C average for the preceding regular semester of college if you were enrolled during a regular academic year or the complete schedule of summer school work. If you are entering directly from high school, you must have a minimum C average for all high school course work. You cannot have been a member of an NPC sorority at Texas Tech or elsewhere prior to this time. If you have pledged but were not initiated, a year must have lapsed since depledging or your pledgeship must have expired by the date you sign a preference card.





*Left to right: Sharon Abernathy, AWS representative; Kelle Birdsong, rush chairman; Barbara Birmingham, president; Regina Knust, pledge trainer.*

## Alpha Chi Omega

GAMMA RHO



Founded at DePauw University, October 15, 1885

Number of collegiate chapters — 101

Colors — Scarlet and olive green

Insignia — Lyre with black enamel scroll across strings bearing Greek letters

Flower — Scarlet carnation with smilax

Publication — "The Lyre"

Philanthropy — Aid to cerebral palsy patients

Nickname — Alpha Chi

Outstanding events — Hawaiian Luau Dinner Dance, Formal Pledge Presentation, Founders' Day Dinner, Chapter Retreat and Workshop, Senior Banquet, Paddle Party, Alpha Chi Week in honor of new initiates, Homecoming Coffee, and Faculty Tea

President — Barbara Birmingham

Rush Chairman — Kelle Birdsong

## Alpha Delta Pi

EPSILON EPSILON



Founded at Macon, Georgia, May 15, 1851

Number of collegiate chapters — 112

Colors — Blue and white

Insignia — Black diamond-shaped pin

Flower — Violet

Publication — "The Adelphean"

Philanthropy — Crippled children

Nickname — A D Pi

Outstanding events — Founders Day Banquet, Fall Presentation, Diamond Ball, Chapter Retreat, Pledge-Active Christmas Party

President — Sharon Durham

Rush Chairman — Alexandra Doss



*Left to right: Alexandra Doss, rush chairman; Sharon Durham, president; Joan Mobberly, pledge trainer; Charlene Tomfohrde, AWS representative.*

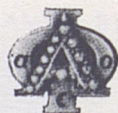




*Left to right: Pamela Lewis, AWS representative; Elizabeth Gerbetz, president; Christine Williams, pledge trainer; Kathy Butler, rush chairman.*

## Alpha Phi

GAMMA IOTA



Founded at Syracuse University, October 10, 1872

Number of collegiate chapters — 94

Colors — Silver and bordeaux

Insignia — Plain gold monogram of the two Greek letters with the letters "AEO" in black

Flowers — Lily-of-the-valley and forget-me-nots

Publication — "The Alpha Phi Quarterly"

Philanthropy — Cardiac Aid Foundation

Nickname — A Phi

Outstanding events — Fall Retreat, Presentation Dance, Formal Dinner Dance, Paddle Party, Scholarship Banquet, Alumnae Christmas Dinner, Kidnap Breakfast, Inspiration Week for initiates, Founders' Day Banquet, Work with Cardiac Aid during Heart Week

President — Elizabeth Gerbetz

Rush Chairman — Kathy Butler

## Chi Omega

KAPPA ZETA



Founded at the University of Arkansas, April 5, 1895

Number of collegiate chapters — 146

Colors — Cardinal and straw

Insignia — Fourteen white stones, either pearls or diamonds, arranged in the X (Chi) which is placed on the Greek letter Omega, raised slightly. Greek letters are written across the top. On the sides are the owl and the skull and cross-bones.

Flower — White carnation

Publication — "Eleusis"

Philanthropy — Muscular dystrophy

Nickname — Chi O

Outstanding events — Spring and Fall Eleusinian Festivals, Presentation, Paddle Party, Dinner Dance, Annual Retreat, Scholarship Banquets

President — Suzanne Hightower

Rush Chairman — Judy Jones



*Left to right: Marsha Meyers, pledge trainer; Judith Jones, rush chairman; Suzanne Hightower, president; Mary Dolaway, AWS representative.*





*Left to right: Christine Adrean, rush chairman; Marilyn Wells, pledge trainer; Susan Stuart, AWS representative; Katherine Gnauck, president.*

## Delta Delta Delta

PHI ETA



Founded Thanksgiving Eve. 1888, at Boston University

Number of collegiate chapters — 108

Colors — Silver, gold, and blue

Insignia — Three jeweled stars with a crescent of gold bearing three deltas

Flower — Pansy

Publication — "The Trident"

Philanthropy — Awards scholarships to American and Canadian women students

Nickname — Tri Delta

Outstanding events — Founders' Day Dinner, Delta Week in honor of new initiates, Annual Presentation Dance, Scholarship Banquet, Chapter Retreat, Pansy Breakfast

President — Katherine Gnauck

Rush Chairman — Chris Adrean

## Delta Gamma

GAMMA XI



Founded at Lewis School, Oxford, Mississippi, December, 1873

Number of collegiate chapters — 94

Colors — Bronze, pink, and blue

Insignia — Anchor with white shield bearing Greek letters

Flower — Cream rose

Publication — "The Anchora"

Philanthropy — Sight Conservation and Aid to the Blind

Nickname — DG

Outstanding events — Spring Dinner Dance, Fall Presentation, Paddle Party, Fall Retreat, Anchor Week, Big Sister-Little Sister Breakfast, Pillow Party, Boat Sailing Party, Founders' Day Banquet, Alumnae Christmas Party, Party for the Blind

President — Johnasue Melton

Rush Chairman — Suzanne McCord



*Left to right: Suzanne McCord, rush chairman; Susan McGuire, AWS representative; Janet Lewis, pledge trainer; Johnasue Melton, president.*





*Left to right: Judith Mixon, AWS representative; Carol Weingartner, rush chairman; Mary Carolyn Hall, president; Susan Esterak, pledge trainer.*

## Gamma Phi Beta

BETA TAU



Founded at Syracuse University, New York, November 11, 1874

Number of collegiate chapters — 82

Colors — Mode and brown

Insignia — The Greek letters enclosed in a black enameled crescent

Flower — Pink carnation

Publication — "The Crescent"

Philanthropy — Own and operate two summer camps for underprivileged girls at Vancouver, B.C., and Indian Hills, Colorado

Nickname — Gamma Phi

Outstanding events — Founders' Day Banquet, Pledge Retreat, Fall Presentation, Spring Dinner Dance, Retreat, Paddle Party, Beta Tau Birthday Party, Senior Breakfast

President — Mary Carolyn Hall

Rush Chairman — Carol Weingartner

## Kappa Alpha Theta

GAMMA PHI



Founded at DePauw University, January 27, 1870

Number of collegiate chapters — 91

Colors — Black and gold

Insignia — Kite-shaped, gold border, black enamel shield and a white chevron on which are inscribed the Greek letters

Flower — Black and gold pansy

Philanthropy — "Kappa Alpha Theta Foundation," Institute of Logopedics, aid to the blind, the Dr. Matilda Brooks Research Laboratory

Publication — "Kappa Alpha Theta"

Nickname — Theta

Outstanding events — Pledge Presentation, Pledge Retreat, Christmas Dance, Ski Retreat, Valentine Party, Kite Flight, Big Sister-Little Sister Party, Spring Dinner Dance, Fraternity Mixers, TGIF Parties, Founders' Day Banquet

President — Marilyn Mingus

Rush Chairman — Carole Stanley



*Left to right: Anne Albritton, pledge trainer; Carole Stanley, rush chairman; Carla Bell, AWS representative; Marilyn Mingus, president.*





*Left to right: Nancy Hicks, AWS representative; Louise McCullough, president; Elizabeth Roberts, rush chairman; Jane Moser, pledge trainer.*

## Kappa Kappa Gamma

DELTA PSI



Founded at Monmouth College, October 13, 1870

Number of collegiate chapters — 93

Colors — Dark and light blue

Insignia — Golden Key

Flower — Fleur-de-lis

Publication — "The Key"

Philanthropy — Rehabilitation services for crippled children and adults

Nickname — Kappa

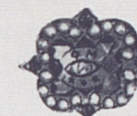
Outstanding events — Chapter Retreat, Pledge-Active Picnic, Fall Presentation, Pledge Peppermint Party, Spring Dinner Dance, Scholarship Banquet, Inspiration Week, Founders' Day Banquet, Monmouth-Duo.

President — Louise McCullough

Rush Chairman — Elizabeth Roberts

## Phi Mu

ALPHA CHI



Founded at Wesleyan College, Macon, Georgia, March 4, 1852

Number of collegiate chapters — 93

Colors — Rose and White

Insignia — Shield of black overlayed on a shield of gold; black shield bears Greek letters and three stars

Flower — Rose enchantrees carnation

Publication — "The Aglaia"

Philanthropy — Project HOPE

Outstanding events — Pledge Presentation, Kidnap Breakfast, Retreat, Dinner Dance, Founders' Day Banquet, Paddle Party, Heart in Hand Week, Scholarship Dinner, Senior Picnic

President — Tanya Bryant

Rush Chairman — Joy Jasper



*Left to right: Sharon McLaughlin, AWS representative; Tanya Bryant, president; Joy Jasper, rush chairman; Betty Hurt, pledge trainer.*





*Left to right: Nan Faulkner, president; Julia Richardson, vice president; Sharon Haralson, rush chairman; Suzanne Ferrell, AWS representative.*

## Pi Beta Phi

TEXAS GAMMA



Founded at Monmouth College, April 28, 1867

Number of collegiate chapters — 109

Colors — Wine and silver blue

Insignia — Golden Arrow with Greek letters inscribed on feathers

Publication — "The Arrow"

Philanthropy — Founding and Maintenance of the Pi Beta Phi Settlement School in Gatlinburg, Tennessee.

Nickname — Pi Phi

Outstanding events — Fall Chapter Retreat, Ivy League Dance, Presentation, Dinner Dance, Biennial Sante Fe Retreat, Founders' Day Banquet, Monmouth-Duo with the Kappas, Senior Farewell

President — Nan Faulkner

Rush Chairman — Sharon Haralson

## Sigma Kappa

GAMMA IOTA



Founded at Colby College, November 9, 1874

Number of collegiate chapters — 109

Colors — Maroon and lavender

Insignia — Gold triangle supporting a raised triangle of maroon enamel bearing the Greek letters in gold

Flower — Violet

Publication — "The Sigma Kappa Triangle"

Philanthropy — The Maine Sea Coast Mission, National Gerontology Program, American Girls' Greek School, Salonika

Nickname — Sigma

Outstanding events — Presentation Dance, Dinner Dance, Founders' Day Banquet, Fall and Spring Retreats, Mr. Pledge Dance, Pledge Levi Party, Senior Breakfast, Fall and Spring Scholarship Banquets

President — Donna Craig

Rush Chairman — Cheri Brownlee



*Left to right: Virginia Green, AWS representative; Cheri Brownlee, rush chairman; Donna Craig, president; Judy Jay, pledge trainer.*





Left to right: Dinab Doyle, AWS representative; Karen Kitzman, rush chairman; Jo Wickstrom, pledge trainer; Jill Philbrick, president.

## Zeta Tau Alpha

GAMMA TAU



Founded at Longwood College, Farmville, Virginia, October 15, 1898

Number of collegiate chapters — 110

Colors — Steel gray and turquoise blue

Insignia — Shield of black enamel superimposed on a shield of gold; black shield bears five-pointed crown and Greek letters

Flower — White violet

Publication — "Themis"

Philanthropy — National Society of Crippled Children

Nickname — Zeta

Outstanding events — Presentation of Pledges, Homecoming Reception, Founders' Day Banquet, Retreat, Scholarship Recognition Service, Easter Party for Underprivileged Children, ZTA-Sigma Chi Soap Fight, Zeta Week in honor of new initiates, Paddle Party, White Violet Breakfast, Dinner Dance, Senior Farewell Banquet

President — Jill Philbrick

Rush Chairman — Karen Kitzman

## Appendix

### Constitution and By-Laws of the Association of Women Students

#### ARTICLE I Name

SECTION 1. The name of this organization shall be the Association of Women Students of Texas Technological College.

#### ARTICLE II

SECTION 1. The objects of the Association of Women Students shall be:

1. To promote and maintain the highest cultural, educational, and social standards of collegiate life in all women's activities on campus by providing, for the purpose of mutual help and benefit, open discussion of matters affecting college women; by devising, administering, and by acting as a coordinating body of all the women's organizations on campus in setting the standards of living and working together on the campus.
2. To develop leadership, school spirit, and the sense of individual responsibility among the women students by encouraging participation in student government and college activities, and in so doing develop a strong student government and a mutual understanding between the administration and the students.
3. To promote high scholarship among the women students at Texas Tech.
4. To strengthen the spirit of unity and fellowship among the women students and to encourage closer relationships between town girls and the girls on campus.

SECTION 2. The Association of Women Students shall operate under the powers set forth in this Constitution.

SECTION 3. Additional powers will be granted the council each year according to the progression and capability exhibited by the previous council and Association.

#### ARTICLE III Members

SECTION 1. Every woman student enrolled at Texas Tech shall be a member of the Association and shall pay dues at the time of registration.

SECTION 2. The Dean of Women shall be an ex-officio member of the organization. The Dean of Women or her representative shall act as an advisor to the Association.

SECTION 3. Each woman student of Texas Tech who resides in a private home is also eligible for membership in the "Town Girls Club." (This organization is set up for town girls, in the hope that through such an organization a closer unity can be gained between the town girls and the girls residing on the campus.)

#### ARTICLE IV

SECTION 1. The following officers shall serve as the executive body of the Association of Women Students and the AWS general council.

SECTION 2. Officers shall be:

1. President
2. First Vice President
3. Second Vice President
4. Third Vice President

5. Secretary
6. Treasurer
7. Judiciary Chairman
8. Intercollegiate Association of Women Students Representative

SECTION 3. Qualifications for officers:

1. They shall maintain a 2.5 overall grade point average for all the time they have been in school and a 2.5 grade point average for the previous semester at Tech.
2. They shall have been enrolled in Tech for at least one semester before being nominated or elected.
3. The president, second and third vice presidents and the IAWS representative shall have been a member of the AWS Council for at least a year previous to the term they serve as an officer. The third vice president must be in summer school or from the surrounding area.
4. The president and first vice president shall be of senior classification when they serve. They must have completed 96 credit hours at the time of taking office in the fall. The first vice president shall be a single student and shall live in a dormitory on campus during her term of office.
5. The second and third vice presidents, secretary, treasurer, and IAWS representative shall be at least a junior at the beginning of their term of office.
6. The Judiciary Council chairman shall be at least a junior at the beginning of her term of office, and have served on Judiciary Council, Panhellenic Judiciary Council, or Advisory Council at least one year.
7. The first vice president shall have been a member of WRC for a period of at least a year previous to her term of office.

SECTION 4. Elections

1. The officers shall be elected during the spring semester by the women students of the college, and shall preside over at least one general council meeting before the conclusion of that semester.
2. The term of office for officers and members of the AWS Council shall be one school year.
3. A nominating committee composed of all past and present members of the council who have completed 96 credit hours shall prepare a slate of officers to be presented at a nominating assembly, where other nominations of qualified girls may be made from the floor.
4. In case the office of president is left vacant, the second vice president shall become president, and a new vice president shall be nominated and elected by the council. If for any reason a vacancy occurs in any of the other elected offices, the council shall nominate and elect someone to fill the vacancy.

#### ARTICLE V Duties of Officers

SECTION 1. President

1. It shall be the duty of the president to preside at the meetings of the Association.
2. She shall exercise supervision over the activities of the Association and be alert to the needs of the campus.



3. She is also president of the AWS Council and presides over this governing body.
4. It shall be the duty of the president to see that the provisions of the Constitution are carried out.
5. She shall have the power to appoint the chairman of all AWS committees with the approval of the executive committee.
6. She shall act as ex-officio member of all committees.
7. She may call a meeting of the council or of the Association whenever necessary.

#### SECTION 2. First Vice President

1. She shall preside at the meeting of the Women's Residence Council.
2. She shall keep a complete record of the activities of the Women's Residence Council and shall make regular reports to the AWS Council.

#### SECTION 3. Second Vice President

1. It shall be the duty of the vice president to preside in the absence of the president.
2. She shall assist the president in the direction of the affairs of the Association and the Council and shall assume the duties of the president in case the office of the president is left vacant.
3. She shall plan and supervise the AWS Orientation Program for New Women Students and shall act as chairman of the "Big-Little Sister" committee.
4. She shall supervise the AWS elections.

#### SECTION 4. Third Vice President

1. It shall be the duty of the third vice president to be in charge of and supervise AWS activities during the summer.
2. She shall compile, address, and mail Tech Tips to all entering fall freshmen and transfer students.

#### SECTION 5. Secretary

1. It shall be the duty of the secretary to keep the records of the actions and meetings of the Association and the Council.
2. She shall take care of all council correspondence.
3. She shall file and preserve all reports and papers of the Association.
4. It shall be the duty of the secretary to report and publicize all activities of AWS through "The Toreador," town papers, campus bulletins, alumni news, and in any other possible way.

#### SECTION 6. Treasurer

1. It shall be the duty of the treasurer to collect all funds and fines for lack of attendance and care for all bills authorized by the advisor.
2. She shall have charge of the Association funds.
3. She shall keep a strict and permanent record of all expenses.
4. She shall make a financial report annually and present a proposed budget for the following year. She shall act as ex-officio member of all committees involving finance.

#### SECTION 7. Judiciary Chairman

1. It shall be the duty of the Judiciary Chairman to preside at Judiciary Council meetings, and to act as liaison between Judiciary Council and AWS.

#### SECTION 8. IAWS Representative

1. The IAWS representative shall be in charge of the clearing house at Texas Tech and she shall take care of all correspondence with member schools of IAWS.
2. The IAWS representative shall serve as program chairman for the general council.

#### SECTION 9.

1. The AWS representative from an organization shall serve as a liaison between her organization and AWS and shall be a sophomore if possible.

### ARTICLE VI AWS General Council

SECTION 1. The purpose of the council shall be to serve as a governing body for the Association and to act as a coordinator of all campus activities engaged in by women students.

SECTION 2. The council shall be composed of eight elected officers, one representative from the Freshman Class and each of the recognized women's organizations on the Texas Tech campus; one vote shall be accorded each member group and officer.

SECTION 3. The council shall meet twice a month unless otherwise stated.

SECTION 4. Scholastic eligibility for the members of the council shall be a 2.0 over-all grade-point average, as well as a 2.0 grade-point average for the preceding semester.

SECTION 5. If it is impossible for a council member to attend a meeting, it is required that she send an alternate from her organization with a written excuse to the secretary, the validity of which will be determined by the executive committee. This alternate shall not be a member who is already on the council; i.e., no woman shall represent two organizations at a council meeting.

SECTION 6. If any organization is not represented by either the regular representative or an alternate, the fine shall be \$1.00, paid by the organization.

SECTION 7. Members of the council who are absent a total of three (3) council meetings in any one semester without adequate excuses and the attendance of an alternate in her place shall be considered inactive. The secretary will notify the organization and the inactivity of its representative and the organization should send a new regular representative.

### ARTICLE VII Women's Residence Council

#### SECTION 1. Membership

1. The first vice president of AWS shall serve as chairman of the Women's Residence Council.
2. Other members of the council shall consist of the vice presidents and presidents of each residence hall.
3. The offices of secretary and treasurer shall rotate in alphabetical order among the residence halls, the secretary being the vice president and the treasurer being the president.

#### SECTION 2. Duties of Women's Residence Council.

1. The Women's Residence Council shall act in collaboration with the Dean of Women and Legislature on matters of group living.
2. The Women's Residence Council shall serve as the policy making body of the women's residence halls, and shall submit recommendations to be approved by the AWS Council and the Dean of Women.

### ARTICLE VIII Judiciary Council

#### SECTION 1. Membership

1. The judiciary chairman of AWS shall serve as chairman of the Judiciary Council.
2. Three other members of the council shall be chosen by the judiciary chairman with the approval of the executive committee and the Dean of Women.

#### SECTION 2. Duties of the Judiciary Council

1. The Judiciary Council shall interpret AWS regulations and the activity point system.

### ARTICLE IX Amendments

SECTION 1. The Constitution may be amended at a regular meeting of the Council of the Association of Women Students provided that the amendments are passed by a two-thirds majority of the total membership and are approved by the Dean of Women. The amendments shall have been read at the council meeting preceding the one at which the vote is taken.

SECTION 2. The proposed amendments must be posted immediately after the meeting at which they are presented to the council.

### ARTICLE X Committees

SECTION 1. The nominating committee shall be composed of the past and present members of the council who have completed 96 credit hours.

SECTION 2. There shall be an executive committee composed of all the officers of AWS and they shall carry out the business of the Association as designed in this constitution, and as directed by the General Council, and shall act as official spokesman for the Association when appropriate, and shall make whatever decisions are necessary to insure the welfare of the Association.

SECTION 3. There shall be such other committees as the Association or council may demand.

### ARTICLE XI National Convention

SECTION 1. The expenses of the official delegates to the National Convention shall be paid by the Association of Women Students.

SECTION 2. These delegates shall be the incoming president and IAWS representative, the advisor, and/or their alternates which shall be selected by the executive committee.

## AWS Activities Point System

Based on time consumption and responsibility, rather than on prestige.

#### TOREADOR

editor, 20  
business manager, 18  
asst. editor, 15

#### LA VENTANA

editor, 20  
asst. editor, 15  
section editor, 15

#### SORORITIES

president, 20  
pledge, trainer, 20  
asst. pledge trainer, 10  
vice president, 10  
recording secretary, 6  
corresponding secretary, 10  
treasurer, 15  
social chairman, 12  
rush chairman, 10  
scholarship chairman, 12  
other officers or committee chairmen, 5  
officers of pledge class, 8  
member or pledge, 4

#### AWS

president, 20  
first vice president, 20  
other executive officers, 11  
WRC secretary, 8  
WRC treasurer, 5  
rep. from organizations, 4 (except residence hall & freshman class)  
president's hostesses chairman, 11  
president's hostesses secretary, 6  
president's hostesses, 1  
chairman of Dad's Day, 8  
chairman of Carol of Lights, 8  
chairman of Women's Day, 10  
committee chairmen, 7

#### TECH UNION

president, 20  
vice president, 13  
public relations, 13  
personnel, 13  
secretary-treasurer, 13  
committee chairman, 10  
asst. committee chairman, 8  
committee secretary, 5  
committee member, 4

#### MODEL U. N.

attorney general, 15  
secretary, 10  
caucus leader, 10  
committee chairman, 8  
participation, 4

#### BSO

president, 12  
retreat chairman, 10  
treasurer, 6  
corresponding secretary, 4  
president's banquet chairman, 3

#### RESIDENCE HALLS

president, 20  
vice president, 15  
AWS representative, 15  
legislator, 5  
advisory council, 3  
committee chairman, 5  
freshman representative, 3

#### STUDENT BODY

president, 25  
other major offices, 20

#### STUDENT SENATE

representative, 8  
committee chairman, 5  
committee member, 3  
executive committee chairman, 3  
executive committee member, 1

#### FRESHMAN COUNCIL

president, 5  
vice president, 5  
secretary-treasurer, 5  
AWS representative, 5  
member, 3

#### PANHELLENIC

president, 15  
vice president, 13  
rush chairman, 13  
activities chairman, 13  
committee chairman, 7  
secretary, 7  
treasurer, 7  
representative, 3



**JUNIOR PANHELLENIC**

all officers, 5  
members, 3

**SPEECH PLAYS, DEPARTMENTAL SHOWS**

major roles, 15  
crew heads, 10  
crew members, 5  
departmental shows, 9

**MORTAR BOARD**

president, 15  
vice president, 15  
projects chairman, 13  
other officers, 6  
member, 4

**JUNIOR COUNCIL**

president, 10  
projects chairman, 8  
membership chairman, 8  
other officers, 4  
member, 2

**WSO**

president, 20  
vice president, 15  
pledge trainer, 15  
projects chairman, 10  
other officers, 7  
member or pledge, 4  
officers of pledge class, 6

**CHEERLEADER, 10**

freshman cheerleader, 5

**ROTC SWEETHEART, 5****ANGEL FLIGHT & CORPSDETTES**

president, 11  
drillmaster, 9  
other officers, 7  
member or alternate, 5

**TECH CHOIR, 6****TECH SINGERS, 4****BAND**

member, 7  
majorette, 8  
officers, 8

**CHAIRMAN OF HOME ECONOMICS****OPEN HOUSE, 10**

committee chairman, 5

**HONORARIES**

president, 8  
other officers, 6  
committee chairman, 4  
member, 1

**DEPARTMENTAL AND MUTUAL INTEREST CLUBS**

president, 8  
other officers, 6  
committee chairman, 4  
member, 1

**RELIGIOUS CLUBS**

president, 8  
committee chairman, 4  
other officers, 6  
member, 1

**WORKING HOURS**

1 point per 1 hour work a week

**GENERAL:**

1. The point system is based on time consumption, rather than on prestige.
2. Maximum number of points an upper-classman may hold at any one time is 35. Freshman women are limited to 25 points maximum. This is not cumulative. The points are in effect only as long as the office is held.
3. No woman may hold more than one 20-point office at a time.
4. If a woman is an officer, chairman, or has another office for which points are given, she does not count her points for membership. The membership points are counted if she has no position.
5. Any woman who wishes to appeal her case, feeling she has substantial reason to deviate from the maximum points allowed, may appear before Judiciary Council. The Council will decide on each case individually.
6. The purpose of the point system is to benefit the individual, the organization, and the campus. It is to avoid having too few students accept all the responsibility, to enable those who are capable to develop their abilities, to keep outside activities from interfering unduly with the student's academic program, and to encourage each woman student to spend her time on activities in which she is most interested and to choose her activities carefully.

## *Women's Creed*

I believe in the women of this college, in their ideals and sincerity of purpose.

I believe in my ability to use wisely the privileges of self government and will strive to accept its responsibilities.

I believe that my purpose in college is to learn to think. I will present my best efforts in seeking what is true and will regard the classroom as a place for unquestionable honesty.

I believe in myself. Recognizing both my strengths and weaknesses, I will strive to follow the Rule of Life — that of charity toward others and service to all.



TELEVISION STATION 2400 ft.  
WEST of FLINT AVE.

**LUBBOCK - TEXAS**

